



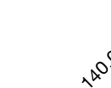



Weatherproof Boxes, Covers, Lampholders and Lighting Fixtures

Round Weatherproof Outlet Boxes and Extensions

Closure plugs, ground screw and mounting lugs included.

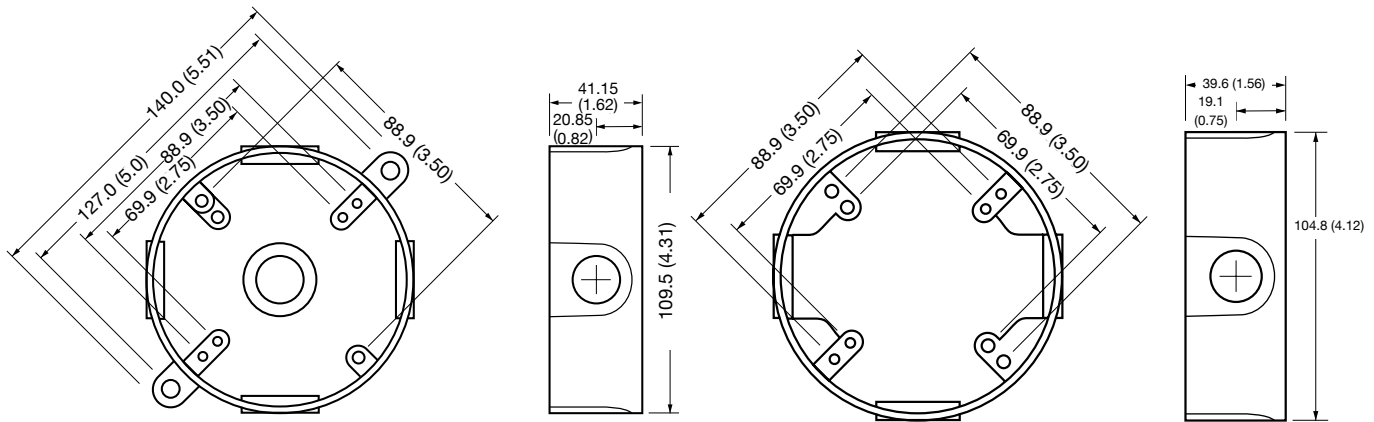
NEC/CEC:
Listed for Ordinary (Unclassified) Locations

	Depth (Inches)	Wiring Cubic Inch Capacity	Hub Size (Inches)	No. Of Hubs	Catalog Number
	1.62	16	1/2	5	WRX50 ①
	1.62	16	3/4	5	WRX75 ①
	1.62	16.5	1/2	4	WRX50CG
	1.62	16.5	3/4	4	WRX75CG
	1.62	16.5	1/2	4	WERX50
	1.62	16.5	3/4	4	WERX75

Appleton OZGEDNEY

COMMERCIAL PRODUCTS: COMMERCIAL SWITCH AND OUTLET BOXES AND COVERS

Dimensions in Millimeters (Inches)



WRX50
WRX75
WRX50CG
WRX75CG

Extension WERX50/WERX75
Extensions and Extension Adapters are used to provide additional capacity needed for NEC box fill requirements. Adapters allow installer to add "take-offs" to new boxes and/or devices.

① Catalog number shown represents gray color. White (Suffix -W) and Bronze (Suffix -B) also available. Consult local sales representative for lead time.