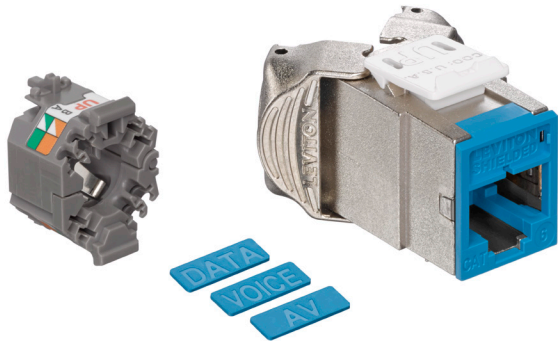


# Atlas-X1™ Cat 6 Component-Rated Shielded QuickPort® Connector

## APPLICATION

The Atlas-X1 Cat 6 Component-Rated Shielded QuickPort Connector supports 1000BASE-T networks. The shielded connector provides superior alien crosstalk (AXT) suppression and protects critical data from potential EMI/RFI (electromagnetic interference/ radio frequency interference). The connector is part of a complete Atlas-X1 Cat 6 shielded system ideal for government, health care, manufacturing, transportation, gaming, and other environments where EMI/RFI and/or security may be a concern.



## SPECIFICATION

The shielded connector shall meet or exceed all requirements for Category 6 as described in ANSI/TIA-568-C.2, as well as Class E requirements as described in ISO/IEC 11801. The connector shall comply with all National Electrical Codes, be compliant with ANSI/TIA-1096-A, be UL listed, and be independently verified. The connector shall be encased in a die-cast housing to protect from potential EMI/RFI. The connector shall support tool-free termination/re-termination and shall not require a specialized termination tool. The connector wiring shall be universal to accommodate T568A and T568B wiring schemes. The connector shall be available in 13 colors; more than established by the ANSI/TIA-606 standard. The connector shall be supplied with interchangeable icons, and be offered with internal shutter and standard styles. It shall support Power over Ethernet up to 100 watts.

## DESIGN CONSIDERATIONS

- Fits all QuickPort applications in patch panels, faceplates, and surface-mount boxes
- Can be used to terminate all types of shielded cable
- To identify ports, use different colored modules and icons for each application (13 ANSI/TIA-606 compatible colors)
- Robust housing and internal shutter protects the connector in harsh environments

Page 1 of 2

## FEATURES

- Independently tested and guaranteed to exceed all component, permanent link, and channel margins
- Patented Retention Force Technology (RFT) protects against time damage and increases system longevity
- For Power over Ethernet, RFT maintains contact force between plug and connector, preventing arcing from intermittent disconnects
- Shielding provides EMI/RFI protection, signal isolation, and excellent alien crosstalk (AXT) suppression
- Unique design supports tool-free termination/re-termination and requires no specialized termination tool
- Short connector design supports a wider range of applications (e.g. shallow boxes, enclosures, bend radius, etc.)
- Terminates from 26 to 22-gauge solid or stranded conductors for use on various cable types
- Robust IDCs can withstand 20 re-termination cycles and connector contacts are tested for 750 plug-mating cycles to ensure system longevity
- Available in 13 ANSI/TIA-606-B compatible colors
- Connector supplied with interchangeable icons (voice, data, A/V, and blank, color coded to match the connector face) for easy identification and tracking of data, voice, or other functions
- Connector with internal shutter protects against dust and debris
- Solid metal body dissipates 53% more heat than traditional plastic, minimizing damage from excess heat in PoE applications
- Tine geometry prevents arcing damage where plug and connector make contact

## STANDARDS COMPLIANCE

- ANSI/TIA-568-C.2 (Cat 6)
- ISO/IEC 11801
- IEC 60603-7 (includes IEC 60512-5-2)
- IEC 60512-99-001 (includes IEC 60512-9-3)
- ANSI/TIA-1096-A (formerly FCC Part 68)
- IEEE 802.3at (Type 1) PoE up to 15.4 watts
- IEEE 802.3at (Type 2) PoE up to 30 watts
- IEEE 802.3bt (Type 3) PoE+ up to 60 watts
- IEEE 802.3bt (Type 4) PoE+ up to 100 watts
- Cisco Universal Power Over Ethernet (UPOE) up to 60 watts
- Power over HDBaseT™ (POH) up to 100 watts
- RoHS 2
- cULus Listed
- UL 2043 Plenum Certified

## PHYSICAL SPECIFICATIONS

Dimensions: See page two  
 Materials: **Connector Body:** Die-cast zinc  
**Spring-Wire Contacts:** High-quality copper-based alloy plated with 50 micro-inches of gold  
 Environmental **Storage Temperature:** -40 °C to +70 °C  
 Conditions: **Operating Temperature:** -10 °C to +60 °C

61SJK-xx6, ICONS-ICx

<b>Leviton Network Solutions</b> 2222 - 222nd St. SE Bothell, WA 98021-4416 tel 1-800-824-3005 tel +1-425-486-2222 appeng@leviton.com www.leviton.com	<b>Asia / Pacific</b> T +1.631.812.6228 E infoasean@leviton.com	<b>Canada</b> T +1.514.954.1840 E pcservice@leviton.com	<b>Caribbean</b> T +1.954.593.1896 E infocaribbean@leviton.com	<b>China</b> T +852.2774.9876 E infochina@leviton.com	<b>Colombia</b> T +57.1.743.6045 E infocolombia@leviton.com
	<b>Europe</b> T +44.0.1592.772124 E customerservice@brand-rex.com	<b>India / SAARC</b> T +971.4.886.4722 E infoindia@leviton.com	<b>Mexico</b> T +52.55.5082.1040 E lsamarketing@leviton.com	<b>Middle East &amp; Africa</b> T +971.4.886.4722 E lmeinfo@leviton.com	<b>South Korea</b> T +82.2.3273.9963 E infokorea@leviton.com

**COUNTRY OF ORIGIN**

USA

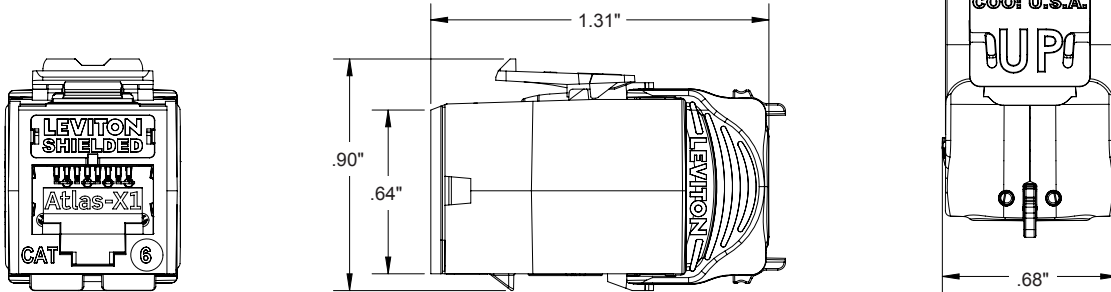
**WARRANTY INFORMATION**

Limited Product and Limited Extended Warranties are rendered VOID if the installed structured cabling system is used for PoE applications that exceed the product's specified power rating.

For a copy of Leviton product warranties, visit [www.leviton.com/warranty](http://www.leviton.com/warranty)

**ELECTRONIC FILES**

For CAD files, typical specs, or technical drawings (.DXF, .DWG), visit [www.leviton.com](http://www.leviton.com).



61SJK-xx6, ICONS-ICx

**PART NUMBERS**

Description	Standard Connector	Connector w/ Internal Shutters
Atlas-X1™ Cat 6 Component-Rated Shielded QuickPort® Connector, white	61SJK-RW6	61SJK-SW6
Atlas-X1 Cat 6 Component-Rated Shielded QuickPort Connector, light almond	61SJK-RT6	61SJK-ST6
Atlas-X1 Cat 6 Component-Rated Shielded QuickPort Connector, ivory	61SJK-RI6	61SJK-SI6
Atlas-X1 Cat 6 Component-Rated Shielded QuickPort Connector, yellow	61SJK-RY6	61SJK-SY6
Atlas-X1 Cat 6 Component-Rated Shielded QuickPort Connector, orange	61SJK-RO6	61SJK-SO6
Atlas-X1 Cat 6 Component-Rated Shielded QuickPort Connector, crimson	61SJK-RC6	61SJK-SC6
Atlas-X1 Cat 6 Component-Rated Shielded QuickPort Connector, dark red	61SJK-RR6	61SJK-SR6
Atlas-X1 Cat 6 Component-Rated Shielded QuickPort Connector, purple	61SJK-RP6	61SJK-SP6
Atlas-X1 Cat 6 Component-Rated Shielded QuickPort Connector, blue	61SJK-RL6	61SJK-SL6
Atlas-X1 Cat 6 Component-Rated Shielded QuickPort Connector, green	61SJK-RV6	61SJK-SV6
Atlas-X1 Cat 6 Component-Rated Shielded QuickPort Connector, grey	61SJK-RG6	61SJK-SG6
Atlas-X1 Cat 6 Component-Rated Shielded QuickPort Connector, black	61SJK-RE6	61SJK-SE6
Atlas-X1 Cat 6 Component-Rated Shielded QuickPort Connector, brown	61SJK-RB6	61SJK-SB6

Color-matched icons (ICONS-ICx) can be ordered separately in 72-quantity packs.  
Bulk wire managers (AXSJK-BGM) can be ordered separately in 10-quantity packs.  
x = color



<b>Leviton Network Solutions</b> 2222 - 222nd St. SE Bothell, WA 98021-4416  tel 1-800-824-3005 tel +1-425-486-2222 appeng@leviton.com www.leviton.com	<b>Asia / Pacific</b> T +1.631.812.6228 E infoasean@leviton.com	<b>Canada</b> T +1.514.954.1840 E pcservice@leviton.com	<b>Caribbean</b> T +1.954.593.1896 E infocaribbean@leviton.com	<b>China</b> T +852.2774.9876 E infochina@leviton.com	<b>Colombia</b> T +57.1.743.6045 E infocolombia@leviton.com
	<b>Europe</b> T +44.0.1592.772124 E customerservice@brand-rex.com	<b>India / SAARC</b> T +971.4.886.4722 E infoindia@leviton.com	<b>Mexico</b> T +52.55.5082.1040 E lsamarketing@leviton.com	<b>Middle East &amp; Africa</b> T +971.4.886.4722 E lmeinfo@leviton.com	<b>South Korea</b> T +82.2.3273.9963 E infokorea@leviton.com