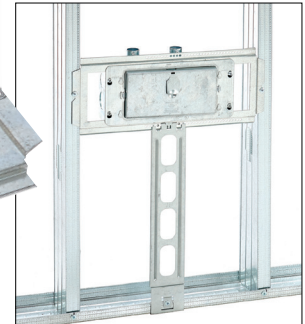


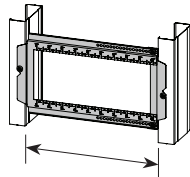
BB7-16 & BB7-24 open box mounting bracket



BB7-16 shown with BBFS-18 floor stand

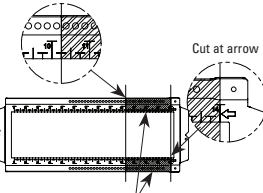
Field modified for non-standard stud center

- 1 Measure distance between studs



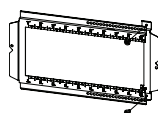
- 2 Cut & discard

Cut measured ruler mark after determining distance between studs



Discard piece after cut has been made

- 3 Screw parts together



FEATURES & BENEFITS

- Supports most standard U.S. and Canadian boxes and plaster rings:
 - 4" sq.
 - 4¹/₁₆" sq.
 - 5" sq.
 - Multi-gang electrical boxes
- Opening allows for adjustability of electrical box position between studs as well as multiple electrical boxes
- Compatible with Rapid Ring™ self-adjusting pre-fab ring and adjustable plaster rings
- Compatible with B-Line series BBFS-18 floor stand
- May be field modified for stud openings down to 6" between studs
- Ruler marks aid in positioning and alignment of electrical box and plaster ring
- Pre-galvanized steel
- Patent pending

BB7-16 & BB7-24

UPC Part #	Catalog #	Description	Width (in)	Width (mm)	Box Qty.
79903856401	BB7-16	Bracket for 16" Stud Spacing	16"	406	25
79903856402	BB7-24	Bracket for 24" Stud Spacing	24"	609	25

Eaton
1000 Eaton Boulevard
Cleveland, OH 44122
United States
Eaton.com

© 2015 Eaton
All Rights Reserved
Printed in USA
Publication No. BB716-15
May 2015

B-Line Division
509 West Monroe Street
Highland, IL 62249
United States
Phone: 800-851-7415
www.cooperline.com/BB716

Eaton is a registered trademark.
All other trademarks are property of their respective owners.