

Colour-Coded Compression Connectors

Type C — Compression Connectors Covers

- Hinged polyethylene cover
- Installs easily, quickly – less expensive than taping
- Positive snap-locks fasten securely
- Drain ports prevent accumulation of corrosion-causing moisture
- Ultra-violet stabilized



Cat. No.	Capacity*	Dimensions (in.)		
		Height	Length	Width
C2BB	All 5/8 in. and O.D. Die taps, 2 in. long or less	1.10	4.00	1.05
C5C	All "O" Die taps, 1-3/4 in. long or less	1.60	3.75	1.25
C7C	All "D" Die taps, 2-1/2 in. long or less	1.80	5.00	1.45
C9	All "N" and "D" Die taps, up to 2 in. long	2.75	4.25	2.00
C9L	All "N" and "D" Die taps, up to 5 in. long		7.25	

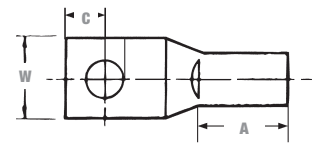
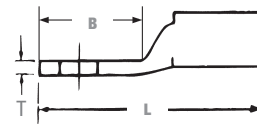
* Before compression.

Colour-Coded Compression Connectors

Type CTL — Copper Lugs, One-Hole Mount, Short Barrel

Copper Compression Connectors

- For use with copper conductors: AWG stranded, flexible cable, welding cable and portable cord
- Specially designed for industrial and building applications
- Made of high-conductivity seamless copper tubing
- Tin-plated for corrosion resistance
- Specially chamfered barrel for ease of installation
- Colour-coded for matching die identification
- Can be used for medium voltage application up to 35 kV provided proper insulation techniques are used
- CSA Certified and UL Listed for AWG conductors when installed with Blackburn®, Burndy, T&B® or Anderson tools, as specified by CSA
- Comply with Subpart 111.60-17 of Federal Register's Coast Guard Electrical Engineering Rules and Regulations



Short Barrel Connectors

- Short barrel connectors designed for regular duty applications
- Ideal for confined areas



Cat. No.	Conductor Size (Cu)	Stud Size (in.)	Dimensions (in.)							Colour Code
			A	B	C	L	W	T		
CTL8-10	8 str.	10	13/32	1/2	7/32	1-5/32	3/8	1/16	Red	
CTL8-14		1/4	13/32	19/32	1/4	1-3/16	7/16	1/16		
CTL8-516		5/16	13/32	5/8	9/32	1-5/16	9/16	1/16		
CTL6-10	6 str.	10	7/16	17/32	7/32	1-7/32	7/16	1/16	Blue	
CTL6-14		1/4	7/16	17/32	7/32	1-7/32	7/16	1/16		
CTL6-516		5/16	7/16	21/32	9/32	1-13/32	19/32	1/16		
CTL6-38		3/8	7/16	21/32	9/32	1-13/32	19/32	1/16		
CTL4-10	4 str.	10	1/2	19/32	1/4	1-3/8	17/32	3/32	Grey	
CTL4-14		1/4	1/2	19/32	1/4	1-3/8	17/32	3/32		
CTL4-516		5/16	1/2	21/32	5/16	1-13/32	19/32	1/16		
CTL4-38		3/8	1/2	21/32	5/16	1-13/32	19/32	1/16		
CTL2-14	2 + 3 str.	1/4	19/32	21/32	1/4	1-1/2	9/16	3/32	Brown	
CTL2-516		5/16	19/32	7/8	3/8	1-23/32	9/16	3/32		
CTL2-38		3/8	19/32	29/32	3/8	1-3/4	9/16	3/32		
CTL2-12		1/2	19/32	1-1/16	1/2	1-29/32	3/4	1/16		
CTL1-14	1 str.	1/4	19/32	21/32	1/4	1-1/2	21/32	3/32	Green	
CTL1-516		5/16	19/32	7/8	3/8	1-23/32	21/32	3/32		
CTL1-38		3/8	19/32	29/32	3/32	1-3/4	21/32	3/32		
CTL1-12		1/2	19/32	1-1/4	1/2	2-3/32	3/4	3/32		
CTL10-516	1/0 str.	5/16	11/16	7/8	3/8	1-13/16	3/4	1/8	Pink	
CTL10-38		3/8	11/16	29/32	3/8	1-7/8	3/4	1/8		
CTL10-12	2/0 str.	1/2	11/16	1-1/4	1/2	2-3/16	3/4	1/8	Black	
CTL20-38		3/8	13/16	29/32	3/8	2-1/32	13/16	1/8		
CTL20-12	3/0 str.	1/2	13/16	1-1/4	1/2	2-11/32	13/16	1/8	Orange	
CTL30-38		3/8	13/16	29/32	3/8	2-1/32	29/32	1/8		
CTL30-12		1/2	13/16	1-1/4	1/2	2-11/32	29/32	1/8		

See Section E for more tool and die information.

Blackburn and T&B are registered trademarks of Thomas & Betts Corporation. All other trademarks are the property of their respective owners.

Cat. No.	Conductor Size (Cu)	Stud Size (in.)	Dimensions (in.)							Colour Code
			A	B	C	L	W	T		
CTL40-38	4/0 str. or 3/0 weld	3/8	15/16	29/32	3/8	2-5/32	1-3/32	1/8	Purple	
CTL40-12		1/2	15/16	1-1/4	1/2	2-1/2	1-1/32	1/8		
CTL250-12	250 kcmil or 4/0 weld	1/2	1-1/32	1-1/4	1/2	2-19/32	1-1/8	1/8	Yellow	
CTL300-12	300 kcmil	1/2	1-1/32	1-1/4	1/2	2-25/32	1-3/16	5/32	White	
CTL350-12	350 kcmil	1/2	1-1/32	1-1/4	1/2	2-25/32	1-11/32	5/32	Red	
CTL400-12	400 kcmil	1/2	1-1/32	1-1/4	1/2	3-3/16	1-13/32	5/32	Blue	
CTL400-58		5/8	1-1/32	1-9/16	5/8	3-1/2	1-13/32	5/32		
CTL500-12	500 kcmil	1/2	1-1/32	1-1/4	1/2	3-1/4	1-19/32	7/32	Brown	
CTL500-58		5/8	1-1/32	1-9/16	5/8	3-9/16	1-19/32	7/32		
CTL600-58	600 kcmil	5/8	1-9/16	1-9/16	5/8	3-23/32	1-3/4	7/32	Green	
CTL750-58	750 kcmil	5/8	1-1/2	1-9/16	5/8	3-25/32	1-29/32	1/4	Black	
CTL1000-58	1000 kcmil	5/8	1-3/4	1-9/16	5/8	4-1/32	2-1/4	9/32	-	

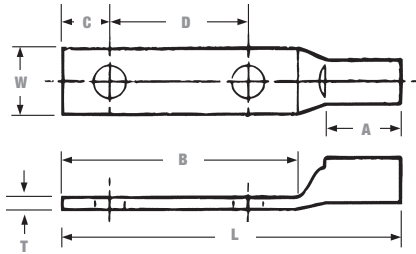


Colour-Coded Compression Connectors

Type CTL — Copper Lugs, Two-Hole Mount, Short Barrel

Copper Compression Connectors

- For use with copper conductors: AWG stranded, flexible cable, welding cable and portable cord
- Specially designed for industrial and building applications
- Made of high-conductivity seamless copper tubing
- Tin-plated for corrosion resistance
- Specially chamfered barrel for ease of installation
- Colour-coded for matching die identification
- Can be used for medium voltage application up to 35 kV provided proper insulation techniques are used
- CSA Certified and UL Listed for AWG conductors when installed with Blackburn®, Burndy, T&B® or Anderson tools, as specified by CSA
- Comply with Subpart 111.60-17 of Federal Register's Coast Guard Electrical Engineering Rules and Regulations



Short Barrel Connectors

- Short barrel connectors designed for regular duty applications
- Ideal for confined areas



Cat. No.	Conductor Size (Cu)	Stud Size (in.)	Dimensions (in.)							Colour Code
			A	B	C	D	L	W	T	
CTL6-214	6 str.	1/4	1/2	1-1/4	1/4	5/8	1-31/32	13/32	1/16	Blue
CTL4-214	4 str.	1/4	1/2	1-1/4	1/4	5/8	2-1/32	1/2	3/32	Grey
CTL2-2516	2 + 3 str.	5/16	19/32	1-5/8	3/8	3/4	2-15/32	9/16	3/32	Brown
CTL1-2516	1 str.	5/16	19/32	1-3/4	3/8	7/8	2-19/32	21/32	3/32	Green
CTL10-2516	1/0 str.	5/16	11/16	1-3/4	3/8	7/8	2-11/16	3/4	1/8	Pink
CTL202	2/0 str.	1/2	13/16	2-13/16	1/2	1-3/4	3-13/16	13/16	1/8	Black
CTL302	3/0 str.	1/2	25/32	2-13/16	1/2	1-3/4	3-15/16	15/16	1/8	Orange
CTL402	4/0 str.	1/2	15/16	3	1/2	1-3/4	4-1/4	1-3/32	1/8	Purple
CTL2502	250 kcmil	1/2	1-1/32	3	1/2	1-3/4	4-11/32	1-1/8	5/32	Yellow
CTL3002	300 kcmil	1/2	1-1/32	3	1/2	1-3/4	4-17/32	1-3/16	5/32	White
CTL3502	350 kcmil	1/2	1-1/32	3	1/2	1-3/4	4-17/32	1-11/32	5/32	Red
CTL4002	400 kcmil	1/2	1-11/32	3	1/2	1-3/4	4-15/16	1-13/32	5/32	Blue
CTL5002	500 kcmil	1/2	1-3/8	3	1/2	1-3/4	5	1-17/32	7/32	Brown
CTL6002-38	600 kcmil	3/8	1-17/32	1-29/32	3/8	1-3/4	5-1/8	1-23/32	7/32	Green
CTL6002-12		1/2	1-17/32	3	1/2	1-3/4	5-1/8	1-23/32	7/32	Green
CTL7502	750 kcmil	1/2	1-1/2	3	1/2	1-3/4	5-7/32	1-29/32	1/4	Black
CTL10002	1000 kcmil	1/2	1-3/4	3	1/2	1-3/4	5-7/16	2-1/4	9/32	-

See Section E for more tool and die information.

Blackburn and T&B are registered trademarks of Thomas & Betts Corporation. All other trademarks are the property of their respective owners.

Colour-Coded Compression Connectors

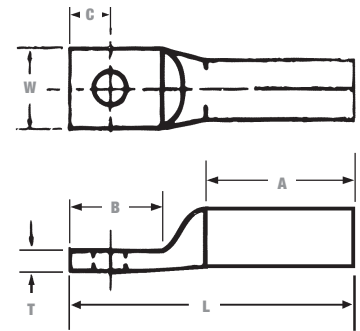
Type CTL — Copper Lugs, One-Hole Mount, Long Barrel

Copper Compression Connectors

- For use with copper conductors: AWG stranded, flexible cable, welding cable and portable cord
- Specially designed for industrial and building applications
- Made of high-conductivity seamless copper tubing
- Tin-plated for corrosion resistance
- Specially chamfered barrel for ease of installation
- Colour-coded for matching die identification
- Can be used for medium voltage application up to 35 kV provided proper insulation techniques are used
- CSA Certified and UL Listed for AWG conductors when installed with Blackburn®, Burndy, T&B® or Anderson tools, as specified by CSA
- Comply with Subpart 111.60-17 of Federal Register's Coast Guard Electrical Engineering Rules and Regulations

Long Barrel Connectors

- Ideal for industrial, oil rig, mining, welding and transportation electrical termination applications
- Heavy duty design which permits additional crimp for added mechanical strength



Cat. No.	Conductor Size (Cu)	Flexible Conductor Size	Stranded	Stud Size (in.)	Dimensions (in.)						Colour Code
					A	B	C	L	W	T	
CTL8L-14	8 str.	1/4	37/24	1/4	25/32	5/8	1/4	1-5/8	13/32	1/16	Red
CTL6L-14	6 str.		61/24	1/4	25/32	5/8	1/4	1-5/8	13/32	1/16	Blue
CTL4L-14	4 str.		91/24	1/4	25/32	5/8	1/4	1-11/16	1/2	3/32	Grey
CTL2L-516	2 + 3 str.	5/16	125/24	5/16	7/8	7/8	3/8	2-1/32	9/16	3/32	Brown
CTL1L-516	1 str.		150/24	5/16	1-3/32	7/8	3/8	2-5/32	21/32	3/32	Green
CTL10L-516	1/0 str.		225/24	5/16	1-3/32	7/8	3/8	2-7/32	3/4	1/8	Pink
CTL20L-38	2/0 str.	1/2	275/24	3/8	1-3/32	29/32	3/8	2-1/4	13/16	1/8	Black
CTL30L-12	3/0 str.		325/24	1/2	1-1/8	1-1/4	1/2	2-11/16	29/32	1/8	Orange
CTL40L-12	4/0 str.		—	1/2	1-3/8	1-1/4	1/2	2-15/16	1-1/32	1/8	Purple
CTL250L-12	250 kcmil	5/8	450/24	1/2	1-19/32	1-1/4	1/2	3-1/8	1-1/8	1/8	Yellow
CTL300L-12	300 kcmil		550/24	1/2	1-25/32	1-1/4	1/2	3-17/32	1-3/16	1/8	White
CTL350L-12	350 kcmil		650/24	1/2	1-27/32	1-1/4	5/8	3-19/32	1-11/32	5/32	Red
CTL400L-58	400 kcmil	5/8	775/24	5/8	1-27/32	1-9/16	5/8	4-1/32	1-13/32	5/32	Blue
CTL500L-58	500 kcmil		925/24	5/8	2-11/32	1-9/16	5/8	4-1/2	1-19/32	3/16	Brown
CTL600L-58	600 kcmil		1100/24	5/8	2-1/8	1-9/16	5/8	4-5/16	1-23/32	7/32	Green
CTL750L-58	750 kcmil		1325/24	5/8	2-3/8	1-9/16	5/8	4-21/32	1-29/32	1/4	Black
CTL1000L-58	1000 kcmil		1600/24 1925/24	5/8	2-7/8	1-9/16	5/8	5-5/32	2-1/4	9/32	—

See Section E for more tool and die information.

Blackburn and T&B are registered trademarks of Thomas & Betts Corporation. All other trademarks are the property of their respective owners.

Colour-Coded Compression Connectors



Type LCN — Copper Lugs, Two-Hole Mount, Long Barrel

Copper Compression Connectors

- For use with copper conductors: AWG stranded, flexible cable, welding cable and portable cord
- Specially designed for industrial and building applications
- Made of high-conductivity seamless copper tubing
- Tin-plated for corrosion resistance
- Specially chamfered barrel for ease of installation
- Colour-coded for matching die identification
- Can be used for medium voltage application up to 35 kV provided proper insulation techniques are used
- CSA Certified and UL Listed for AWG conductors when installed with Blackburn®, Burndy, T&B® or Anderson tools, as specified by CSA
- Comply with Subpart 111.60-17 of Federal Register's Coast Guard Electrical Engineering Rules and Regulations

Long Barrel Connectors

- Ideal for industrial, oil rig, mining, welding and transportation electrical termination applications
- Heavy duty design which permits additional crimp for added mechanical strength



Cat. No.	Conductor Size (Cu)	Flexible Conductor Size	Stranded	Stud Size (in.)	Dimensions (in.)							Colour Code
					A	B	C	D	L	W	T	
LCN8-14	8 str.	8	37/24	1/4	25/32	1-3/16	1/4	5/8	2-1/8	15/32	1/16	Red
LCN6-14	6 str.	6	61/24	1/4	25/32	1-1/4	1/4	5/8	1-1/4	13/32	1/16	Blue
LCN6-12				1/2	25/32	3	1/2	1-3/4	4-5/32	7/8	3/32	
LCN4-14	4 str.	5	91/24	1/4	25/32	1-3/16	1/4	5/8	2-3/16	17/32	3/16	Grey
LCN4-12				1/2	25/32	3	1/2	1-3/4	4-5/32	7/8	3/32	
LCN2-516	2 + 3 str.	3	125/24	5/16	7/8	1-5/8	3/8	3/4	2-15/16	9/16	3/32	Brown
LCN2-12	2 str.			1/2	7/8	3	1/2	1-3/4	4-1/4	7/8	3/32	
LCN1-516	1 str.	2	150/24	5/16	1-1/32	1-5/8	3/8	7/8	2-31/32	21/32	3/32	Green
LCN1-12				1/2	1-1/32	3	1/2	1-3/4	4-13/32	7/8	3/32	
LCN10	1/0 str.	1	225/24	1/2	1-1/32	3	1/2	1-3/4	3-31/32	3/4	1/8	Pink
LCN20	2/0 str.	1/0	275/24	1/2	1-5/16	3	1/2	1-3/4	4-3/16	13/16	1/8	Black
LCN30	3/0 str.	2/0	325/24	1/2	1-1/8	2-15/16	1/2	1-3/4	4-7/16	15/16	1/8	Orange
LCN40	4/0 str.	—	—	1/2	1-3/8	3	1/2	1-3/4	4-11/16	1-1/32	1/8	Purple
LCN250	250 kcmil	3/0	450/24	1/2	1-19/32	3	1/2	1-3/4	4-29/32	1-1/16	1/8	Yellow
LCN300	300 kcmil	4/0	550/24	1/2	1-25/32	3	1/2	1-3/4	5-9/32	1-3/16	1/8	White
LCN350	350 kcmil	263	650/24	1/2	1-27/32	3	1/2	1-3/4	5-11/32	1-11/32	5/32	Red
LCN400	400 kcmil	313	775/24	1/2	1-27/32	3	1/2	1-3/4	5-7/16	1-13/32	5/32	Blue
LCN500	500 kcmil	373	925/24	1/2	2-11/32	3	1/2	1-3/4	5-15/16	1-19/32	3/16	Brown
LCN600	600 kcmil	444	1100/24	1/2	2-1/8	3	1/2	1-3/4	5-3/4	1-23/32	7/32	Green
LCN75	750 kcmil	535	1325/24	1/2	2-3/8	3	1/2	1-3/4	6-3/32	1-29/32	1/4	Black
LCN99	1000 kcmil	646 777	1600/24 1925/24	1/2	2-7/8	3	1/2	1-3/4	6-19/32	2-1/4	9/32	—

See Section E for more tool and die information.

Blackburn and T&B are registered trademarks of Thomas & Betts Corporation. All other trademarks are the property of their respective owners.

Colour-Coded Compression Connectors

Type CSP — Copper Splices, Short Barrel

Copper Compression Connectors

- For use with copper conductors: AWG stranded, flexible cable, welding cable and portable cord
- Specially designed for industrial and building applications
- Made of high-conductivity seamless copper tubing
- Tin-plated for corrosion resistance
- Specially chamfered barrel for ease of installation
- Colour-coded for matching die identification
- Can be used for medium voltage application up to 35 kV provided proper insulation techniques are used
- CSA Certified and UL Listed for AWG conductors when installed with Blackburn®, Burndy, T&B® or Anderson tools, as specified by CSA
- Comply with Subpart 111.60-17 of Federal Register's Coast Guard Electrical Engineering Rules and Regulations



Short Barrel Connectors

- Short barrel connectors designed for regular duty applications
- Ideal for confined areas



Cat. No.	Conductor Size (Cu)	Length L (in.)	Colour Code
CSP8	8 str.	1	Red
CSP6	6 str.		Blue
CSP4	4 str.		Grey
CSP2	2 + 3 str.	1-1/4	Brown
CSP1	1 str.	1-1/2	Green
CSP10	1/0 str.	1-5/8	Pink
CSP20	2/0 str.	1-3/4	Black
CSP30	3/0 str.		Orange
CSP40	4/0 str.		Purple
CSP250	250 kcmil	2-1/4	Yellow
CSP300	300 kcmil	1-1/8	White
CSP350	350 kcmil	2-1/4	Red
CSP400	400 kcmil	2-3/4	Blue
CSP500	500 kcmil		Brown
CSP600	600 kcmil		Green
CSP750	750 kcmil	3	Black
CSP1000	1000 kcmil		-

See Section E for more tool and die information.

Blackburn and T&B are registered trademarks of Thomas & Betts Corporation. All other trademarks are the property of their respective owners.



Colour-Coded Compression Connectors

Type CU — Copper Splices, Long Barrel

Copper Compression Connectors

- For use with copper conductors: AWG stranded, flexible cable, welding cable and portable cord
- Specially designed for industrial and building applications
- Made of high-conductivity seamless copper tubing
- Tin-plated for corrosion resistance
- Specially chamfered barrel for ease of installation
- Colour-coded for matching die identification
- Can be used for medium voltage application up to 35 kV provided proper insulation techniques are used
- CSA Certified and UL Listed for AWG conductors when installed with Blackburn®, Burndy, T&B® or Anderson tools, as specified by CSA
- Comply with Subpart 111.60-17 of Federal Register's Coast Guard Electrical Engineering Rules and Regulations

Long Barrel Connectors

- Ideal for industrial, oil rig, mining, welding and transportation electrical termination applications
- Heavy duty design which permits additional crimp for added mechanical strength



Cat. No.	Conductor Size (Cu)	Flexible Conductor		Stud Size (in.)	Length L (in.)	Colour Code	
		CMA	Stranded				
CU8	8 str.	8	37/24	1/4	1-3/4	Red	
CU6	6 str.	6	61/24			Blue	
CU4	4 str.	5	91/24			Grey	
CU2	2 + 3 str.	3	125/24			Brown	
CU1	1 str.	2	150/24	5/16	2	Green	
CU10	1/0 str.	1	225/24			Pink	
CU20	2/0 str.	1/2	275/24	3/8	2-1/8	Black	
CU30	3/0 str.	2/0	325/24			Orange	
CU40	4/0 str.	-	-			2-1/4	Purple
CU250	250 kcmil	3/0	450/24	1/2	3-3/8	Yellow	
CU300	300 kcmil	4/0	550/24			White	
CU350	350 kcmil	263	650/24			3-1/2	Red
CU400	400 kcmil	313	775/24			3-3/4	Blue
CU500	500 kcmil	373	925/24	5/8	4-3/4	Brown	
CU600	600 kcmil	444	1100/24			4-1/4	Green
CU750	750 kcmil	535	1325/24			4-3/4	Black
CU1000	1000 kcmil	646 777	1600/24 1925/24			5-5/8	-

See Section E for more tool and die information.

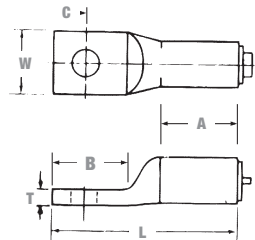
Blackburn and T&B are registered trademarks of Thomas & Betts Corporation. All other trademarks are the property of their respective owners.

Colour-Coded Compression Connectors

Type ATL — Aluminum Lugs, One-Hole

Aluminum Compression Connectors

- Specifically designed for use with aluminum conductors (concentric, compressed or compact)
- Also listed for use with copper conductors
- Made of high-conductivity seamless aluminum tubing
- Tin-plated for corrosion resistance
- Chamfered barrels for ease of installation
- Can be used for medium voltage applications up to 35 kV provided proper insulation techniques are used
- CSA Certified and UL Listed for AWG conductors when installed with Blackburn®, Burndy, T&B® or Anderson tools, as specified by CSA
- Colour-coded for quick, easy die identification
- Pre-filled with oxide inhibiting compound



Cat. No.	Conductor Size		Stud Size (in.)	Dimensions (in.)						Colour Code
	(Al)	(Cu)		A	B	C	L	W	T	
ATL8-10	8 str.	6 AWG	10	1/2	19/32	7/32	1-9/32	13/32	3/32	Blue
ATL8-14			1/4	1/2	11/16	11/32	1-3/8	7/16	3/32	
ATL6-10	6 str.	4 AWG	10	25/32	9/16	7/32	1-1/2	15/32	1/8	Grey
ATL6-14			1/4	25/32	23/32	15/32	1-21/32	15/32	1/8	
ATL6-38			3/8	27/32	29/32	7/16	1-27/32	5/8	3/32	
ATL4-14	4 str.	1 AWG	1/4	27/32	13/16	11/32	1-29/32	5/8	3/16	Green
ATL4-516			5/16	27/32	1	7/16	2-1/16	5/8	3/16	
ATL4-38			3/8	27/32	29/32	7/16	2	5/8	3/16	
ATL2-14	2 + 3 str.	1/0 AWG	1/4	27/32	25/32	11/32	1-15/16	23/32	3/16	Pink
ATL2-516			5/16	27/32	7/8	7/16	2-11/32	3/4	3/16	
ATL2-38			3/5	27/32	29/32	7/16	2-1/16	23/32	3/16	
ATL1-516	1 str.		5/16	27/32	7/8	7/16	2-1/32	23/32	3/16	Gold
ATL1-38			3/8	27/32	29/32	7/16	2-3/8	3/4	3/16	
ATL10-516	1/0 str.	-	5/16	1-5/32	1	7/16	2-17/32	7/8	3/16	Tan
ATL10-38			3/8	1-5/32	1-1/16	7/16	2-19/32	7/8	3/16	
ATL10-12			1/2	1-5/32	1-3/8	11/16	2-15/16	15/16	3/16	
ATL20-38	2/0 str.		3/8	1-3/16	1	7/16	2-5/8	31/32	7/32	Olive
ATL20-12			1/2	1-3/16	1-3/8	11/16	3	1-1/32	7/32	
ATL30-38	3/0 str.		3/8	1-11/32	1-1/16	7/16	2-13/16	1-1/16	7/32	Ruby
ATL30-12			1/5	1-11/32	1-3/8	11/16	3-1/8	1-1/16	7/32	
ATL40-38	4/0 str.	300 kcmil	3/8	1-7/8	1-3/32	3/8	3-3/4	1-3/16	1/4	White
ATL40-12			1/2	1-7/8	1-1/4	1/2	3-7/8	1-3/16	1/4	
ATL250-12	250 kcmil	350 kcmil	1/2	2-1/32	1-1/4	1/2	4-1/32	1-9/32	1/4	Red
ATL300-38	300 kcmil	400 kcmil	3/8	2	1-5/16	3/8	4-3/16	1-3/8	9/32	Blue
ATL300-12			1/2	2	1-5/16	1/2	4-3/16	1-3/8	9/32	
ATL350-12	350 kcmil	500 kcmil	1/2	2-11/16	1-5/16	1/2	4-7/8	1-1/2	5/16	Brown
ATL400-58	400 kcmil	600 kcmil	5/8	2-11/16	1-1/4	1/2	4-15/16	1-5/8	3/8	Green
ATL500-12	500 kcmil	700 kcmil	1/2	2-11/16	1-1/4	1/2	4-15/16	1-25/32	3/8	Pink
ATL500-58			5/8	2-11/16	2	3/4	5-11/16	1-25/32	3/8	
ATL600-12	-	600 kcmil	1/2	2-11/16	2	3/4	5-13/16	1-29/32	11/32	Black
ATL750-12	750 kcmil	900 kcmil	1/2	2-7/8	1-1/4	1/2	5-1/4	2-1/8	3/8	-
ATL750-58			5/8	2-7/8	2	3/4	6-1/32	2-1/8	3/8	

See Section E for more tool and die information.

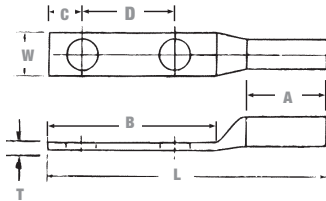


Colour-Coded Compression Connectors

Type ATL — Aluminum Lugs, Two-Hole

Aluminum Compression Connectors

- Specifically designed for use with aluminum conductors (concentric, compressed or compact)
- Also listed for use with copper conductors
- Made of high-conductivity seamless aluminum tubing
- Tin-plated for corrosion resistance
- Chamfered barrels for ease of installation
- Can be used for medium voltage applications up to 35 kV provided proper insulation techniques are used
- Colour-coded for quick, easy die identification
- Pre-filled with oxide inhibiting compound
- CSA Certified and UL Listed for AWG conductors when installed with Blackburn®, Burndy, T&B® or Anderson tools, as specified by CSA



Cat. No.	Conductor Size		Stud Size (in.)	Dimensions (in.)						Colour Code	
	(Al)	(Cu)		A	B	C	D	L	W		T
ATL102-38	1/0 str.	-	3/8	1-5/32	2-1/16	3/8	1	3-19/32	7/8	3/16	Tan
ATL102			1/2	1-3/16	3	1/2	1-3/4	4-9/16	15/16	3/16	Tan
ATL202	2/0 str.	-	1/2	1-3/16	3-3/8	3/4	1-3/4	5	31/32	7/32	Olive
ATL302	3/0 str.	-	1/2	1-11/32	3-3/8	3/4	1-3/4	5-5/32	1-1/16	7/32	Ruby
ATL402	4/0 str.	300 kcmil	1/2	1-7/8	3	1/2	1-3/4	5-5/8	1-3/16	1/4	White
ATL2502	250 kcmil	350 kcmil	1/2	2-1/32	3	1/2	1-3/4	5-25/32	1-9/32	1/4	Red
ATL3002	300 kcmil	400 kcmil	1/2	2	3	1/2	1-3/4	5-7/8	1-3/8	9/32	Blue
ATL3502	350 kcmil	500 kcmil	1/2	2-11/16	3	1/2	1-3/4	6-9/16	1-1/2	5/16	Brown
ATL4002	400 kcmil	600 kcmil	1/2	2-11/16	3	1/2	1-3/4	6-11/16	1-5/8	3/8	Green
ATL5002	500 kcmil	700 kcmil	1/2	2-11/16	3	1/2	1-3/4	6-11/16	1-25/32	3/8	Pink
ATL6002	-	600 kcmil	1/2	2-11/16	3	1/2	1-3/4	6-13/16	1-29/32	11/32	Black
ATL7502	750 kcmil	900 kcmil	1/2	2-7/8	3	1/2	1-3/4	7-1/8	2-1/8	3/8	-

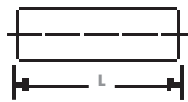
See Section E for more tool and die information.

Colour-Coded Compression Connectors

Type ASP — Aluminum Splices

Aluminum Compression Connectors

- Specifically designed for use with aluminum conductors (concentric, compressed or compact)
- Also listed for use with copper conductors
- Made of high-conductivity seamless aluminum tubing
- Tin-plated for corrosion resistance
- Chamfered barrels for ease of installation
- Can be used for medium voltage applications up to 35 kV provided proper insulation techniques are used
- Colour-coded for quick, easy die identification
- Pre-filled with oxide inhibiting compound
- CSA Certified and UL Listed when installed with Blackburn®, Burndy, T&B® or Anderson tools, as specified by CSA

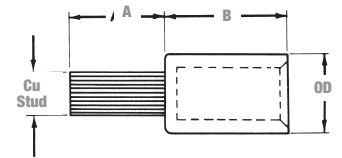
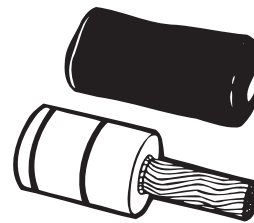


Cat. No.	Conductor Size		Length L (in.)	Colour Code
	(Al)	(Cu)		
ASP8	8 str.	6 AWG	1-1/4	Blue
ASP6	6 str.	4 AWG	1-5/8	Grey
ASP4	4 str.	1 AWG	1-7/8	Green
ASP2	2 + 3 str.	1/0 AWG		Pink
ASP1	1 str.	-	2-3/8	Gold
ASP10	1/0 str.			Tan
ASP20	2/0 str.	-	2-1/2	Olive
ASP30	3/0 str.			Ruby
ASP40	4/0 str.	300 kcmil	3-3/4	White
ASP250	250 kcmil	350 kcmil	4	Red
ASP300	300 kcmil	400 kcmil		Blue
ASP350	350 kcmil	500 kcmil	3-7/8	Brown
ASP400	400 kcmil	600 kcmil	4-7/8	Green
ASP500	500 kcmil	700 kcmil	5	Pink
ASP600	-	600 kcmil	5-1/8	Black
ASP750	750 kcmil	900 kcmil	5-3/8	-
ASP1000	1000 kcmil	-	6	

See Section E for more tool and die information.

Type PA — Pin Adapter Terminals

- Connector for aluminum conductors only; pigtail may be inserted into either aluminum or copper connectors
- Insulating cover included
- 90°C Rating per UL standard
- Tin-plated stranded copper wire pigtail
- Tin-plated aluminum barrel pre-filled with oxide inhibitor and capped



Cat. No.	Conductor Size (Al)	Copper Stud Size	Dimensions (in.)			Colour Code	Die #
			A	B	O.D.		
PA06	6 str.	8	7/8	1-11/32	0.640	Orange	50
PA04	4 str.	6					
PA02	2 str.	4					
PA01	1 str.	3	1	1-19/32	0.906	Red	76
PA11	1/0 str.	2	1-1/4				
PA21	2/0 str.	1	1-1/4				
PA31	3/0 str.	1/0	1-3/8	1-7/8	-	-	-
PA41	4/0 str.	2/0					
PA25	250 kcmil	3/0	1-1/2	2-1/16	1.155	Brown	87H
PA30	300 kcmil	4/0	2-1/8				
PA35	350 kcmil		1-5/8	1-7/8	1.375	-	-
PA40	400 kcmil	250 kcmil	2-3/32				
PA50	500 kcmil	350 kcmil	1-7/8	2-3/4	1.500	Yellow	115H
PA60	600 kcmil						
PA75	750 kcmil	500 kcmil	2	2-3/4	1.500	Yellow	115H

UL Listed.
CSA not applicable.

T&B Dies									
Alum. Wire Size	Die Code	UT3	UT5	TBM5	TBM6	TBM8	13642 12-Ton	TBM15 UT15	21920 20-Ton
#6 – #1	50	5/8	TU	Orange	-	-	-	15529	-
1/0 – 4/0	76 or 76H	-	TX	-	13472 Red 13476 Red	13467	11744	15512	11170
250 kcmil – 350 kcmil	87H	-	TH	-	-	13468	11746	15506	11176
400 kcmil – 500 kcmil	106H	-	-	-	-	-	11749	15515	11140
600 kcmil – 750 kcmil	115H	-	-	-	-	-	11753	15504	11157



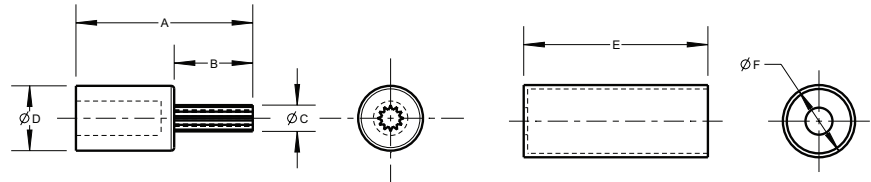
Colour-Coded Compression Connectors

Type OAPA – Offset Pin Style and Type APA Center Pin Style

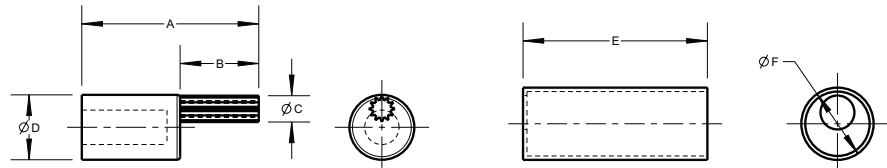
Optimum design to allow a reliable termination of aluminum or copper

- Easily transition large aluminum cables into mechanical lugs
- Simplify installations in tight working spaces
- Knurled pins provide a solid contact area to ensure low-resistance connection
- Manufactured from high-conductivity aluminum alloy
- Tin plated to eliminate the possibility of galvanic corrosion
- Pre-filled with oxide inhibitor to ensure airtight termination
- Kitted with an insulating boot to eliminate taping

Center pin style



Offset pin style



Material: High-conductivity aluminum alloy

Plating: Electro-tin plated

Insulating boot: EPDM rubber except APA-1000 and OAPA-1000 boot are PVC

Cat. No. Center pin style	Cat. No. Offset pin style	Wire size	A Overall Length (in.)	B Pin Length (in.)	C Pin Dia. (in.)	D Barrell Dia. (in.)	E Boot Length (in.)	F Boot Dia.(in.)	Die/Colour code
APA-6	-	#6 AWG	1.85	0.68	0.24	0.60	3.06	0.81	50/Tan
APA-4	-	#4 AWG	1.85	0.68	0.24	0.60	3.06	0.81	50/Tan
APA-2	-	#2 AWG	1.85	0.68	0.24	0.60	3.06	0.81	50/Tan
APA-1	-	#1 AWG	2.01	0.84	0.26	0.60	3.06	0.81	50/Tan
APA-1/0	-	1/0 AWG	2.21	0.84	0.29	0.85	3.22	1.08	66/White
APA-2/0	OAPA-2/0	2/0 AWG	2.21	0.84	0.33	0.85	3.22	1.08	66/White
APA-3/0	OAPA-3/0	3/0 AWG	2.59	1.22	0.37	0.85	3.22	1.08	66/White
APA-4/0	OAPA-4/0	4/0 AWG	2.59	1.22	0.42	0.85	3.22	1.08	66/White
APA-250	OAPA-250	250 kcmil	2.63	1.22	0.47	1.10	3.50	1.30	87/Brown
APA-300	OAPA-300	300 kcmil	2.75	1.34	0.53	1.10	3.50	1.30	87/Brown
APA-350	OAPA-350	350 kcmil	2.75	1.34	0.57	1.10	3.50	1.30	87/Brown
APA-400	OAPA-400	400 kcmil	3.63	1.60	0.68	1.32	3.75	1.47	99/Pink
APA-500	OAPA-500	500 kcmil	3.63	1.60	0.68	1.32	3.75	1.47	99/Pink
APA-600	OAPA-600	600 kcmil	3.67	1.64	0.73	1.46	4.06	1.72	115/Yellow
APA-750	OAPA-750	750 kcmil	3.79	1.76	0.81	1.46	4.06	1.72	115/Yellow
APA-1000	OAPA-1000	1000 kcmil	4.03	2.00	0.90	1.70	3.33	2.04	140/-