

www.bradyid.com.au/bmp41



BMP[®]41
LABEL PRINTER

One and done.

One and done.

BMP®41 LABEL PRINTER

Print it once, print it all, get it done!

The BMP®41 label printer is the rugged, portable solution that gives you the versatility to create your own length or already-sized die-cut and continuous labels anywhere, anytime! The BMP®41 label printer is designed with you in mind. Get your labelling done easier and faster so you can get on with your day. You only need one printer to print everything you need.

Whether you are faced with your jobs for the day or one-off tasks, the BMP®41 printer saves you time and money by printing your labels once and getting it done.

- Quick cartridge loading with already matched ribbon
- Prints up to 250 labels per day at a print speed of 33mm per second
- Drop-tested to ensure it can withstand any environment

Brady labels keep you in compliance with appropriate industry-specific regulations.

Exceptional material variety and durability

The BMP®41 printer prints durable, true-sized 25.4mm wide die-cut or continuous identification to maximize the amount of data on your label. Compatible with up to 10 different industry specified materials that last, the BMP®41 prints for a variety of applications. Key applications include wire marking, sleeving, panel labelling, terminal block, patch panel, general identification and more!



Wide range of materials so you can print all your jobs on one printer

Rugged industrial bumpers with a grab and go grip to be on the move with you

Simple all-in-one, drop-in cartridges for quick and easy supply change and automatic label setup

Large graphical LCD display with backlight to see exactly what you're printing

Rechargeable battery for long lasting power supply

Built-in wizard-based applications and graphics to help create and print labels quickly and easily

QWERTY style keypad and hot keys for easier typing and reducing errors

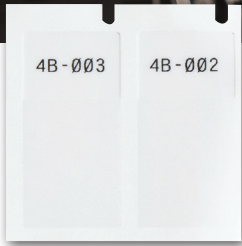
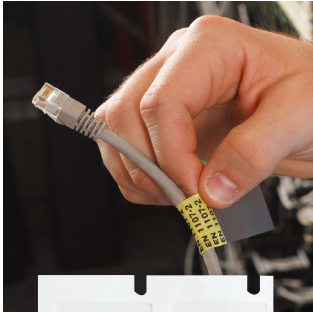
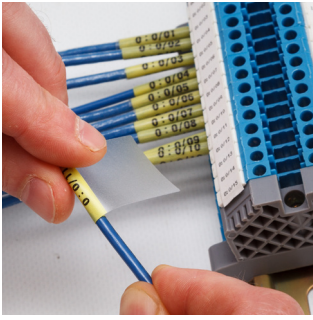
Sampling of the easy-to-use menu keys:

Label Type

General	Wire Marker	Flags	Terminal Block	Patch Panel
110-Block	BIX Block	DesiStrip	66-Block	

Symbol

Arrows	Datacomm	Electrical	International
Fire	Mandatory		

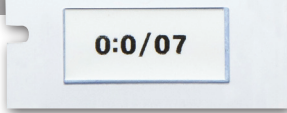
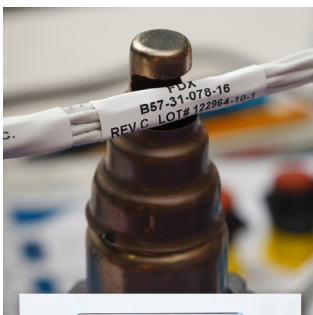
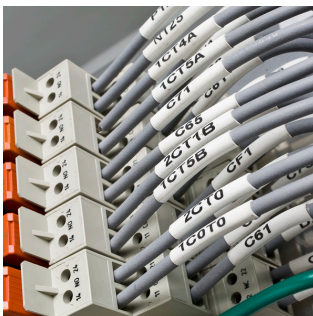


Self-Laminating Wire & Cable Markers

Self-laminating markers features a clear, non printable area that wraps around wires and cable and serves as an overlamine to the printed text.

- Designed to adhere to highly curved surfaces, wires and cables
- Superior resistance to abrasion, handling, solvents, water, oil, dirt and more

Part No.	Reference	Colour	Label Width (mm)	Label Length (mm)	Write-On Area (mm)	Labels per Roll	Wire Gauge	Max Wire Diameter (mm)	Sized to Fit
B-427 - Self-Laminating Vinyl									
143261	M-102-427	BK on WT	12.7	31.7	9.5	200	10 - 4 Gauge	6.7	CAT-6, 4 pair UTP Copper
134252	M-11-427	BK on WT	12.7	19.1	9.5	360	16 - 10 Gauge	4.1	CAT-6, 4 pair UTP Copper
131581	M-136-427	BK on WT	25.4	19.1	9.5	340	16 - 10 Gauge	4.1	CAT-6, 4 pair UTP Copper
131571	M-143-427	BK on WT	25.4	31.7	12.7	200	10 - 4 Gauge	6.7	CAT-6, 4 pair UTP Copper, Fiber, Coaxial
131589	M-47-427	BK on WT	25.4	12.7	9.5	360	12 - 10 Gauge	5.3	2 pair Fiber/Coaxial, Single/Multi-Mode
131584	M-48-427	BK on WT	25.4	19.1	9.5	200	12 - 10 Gauge	5.3	CAT-6, 4 pair UTP Copper, Fiber, Coaxial
131580	M-49-427	BK on WT	25.4	25.4	9.5	160	12 - 10 Gauge	5.3	2 pair Fiber/Coaxial, Single/Multi-Mode
131579	M-51-427	BK on WT	25.4	63.5	19.1	110	3 Gauge - 2/0	13.5	25 pair Copper, 4-12 pair Fiber, Coaxial
131585	M-51-427-YL	BK on YL	25.4	63.5	19.1	110	3 Gauge - 2/0	13.5	25 pair Copper, 4-12 pair Fiber, Coaxial
131587	M-53-427	BK on WT	25.4	101.6	25.4	70	3/0 - 400 kcmil	21.6	50 pair Copper, 24 pair Fiber, Backbone
131601	M-53-427-YL	BK on YL	25.4	101.6	25.4	70	3/0 - 400 kcmil	21.6	50 pair Copper, 24 pair Fiber, Backbone
131574	M-89-427	BK on WT	12.7	38.1	12.7	180	10 - 4 Gauge	8.1	CAT-6, 4 pair UTP Copper
131572	M-90-427	BK on WT	19.1	38.1	12.7	180	10 - 4 Gauge	8.1	CAT-6, 4 pair UTP Copper
131570	M-91-427	BK on WT	25.4	38.1	12.7	180	0 - 4 Gauge	8.1	CAT-6, 4 pair UTP Copper, Fiber, Coaxial
131573	M-91-427-YL	BK on YL	25.4	38.1	12.7	180	10 - 4 Gauge	8.1	CAT-6, 4 pair UTP Copper, Fiber, Coaxial
143251	MC-750-427	BK on WT	19.1	7.6m	9.5	1 roll cont.	16 - 10 Gauge	6.7	CAT-6, 4 pair UTP Copper
143259	MC-1000-427	BK on WT	25.7	7.6m	9.5	1 roll cont.	12 - 10 Gauge	21.6	CAT-6, 4 pair UTP Copper

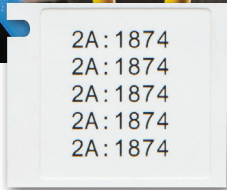
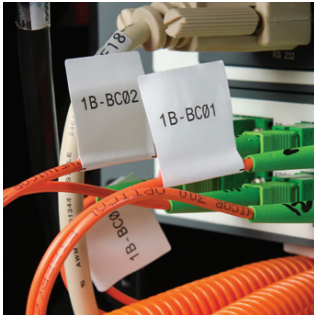


PermaSleeve® PS Wire Marking Sleeves

These heat-shrink sleeves are the ultimate in marker durability, permanence and aesthetic appearance. Fast shrink rate saves time and costs during installation. Meets SAE-AMS-DTL-23053/5C (class 1), SAE-AS-81531, MIL-STD-202, and tested per ASTM E162, ASTM E662

- 3:1 heat shrinkable sleeve that fits snugly around wires
- Fade-resistant and fade-retardant
- Available as individual die-cut markers or continuous cut-to-length tubing

Part No.	Reference	Colour	Label Width (mm)	Label Length (mm)	Labels per Roll	Wire Gauge	Max Wire Diameter (mm)
B-342 - Permasleeve® PS Wire Marking Sleeves							
131611	M-125-075-342	BK on WT	19.1	5.9	80	22-16 Gauge	1.2 - 2.8
131609	M-187-075-342	BK on WT	19.1	8.5	80	20-10 Gauge	1.6 - 3.8
131610	M-250-075-342	BK on WT	19.1	11.1	80	16-8 Gauge	2.4 - 5.5
131612	M-375-075-342	BK on WT	19.1	16.4	80	12-4 Gauge	3.2 - 8.1
143223	MC-125-342	BK on WT	5.9	2.1m	1 roll cont.	22-16 Gauge	1.2 - 2.8
143231	MC-125-342-YL	BK on YL	5.9	2.1m	1 roll cont.	22-16 Gauge	1.2 - 2.8
143222	MC-187-342	BK on WT	8.5	2.1m	1 roll cont.	20-10 Gauge	1.6 - 3.8
143230	MC-187-342-YL	BK on YL	8.5	2.1m	1 roll cont.	20-10 Gauge	1.6 - 3.8
143224	MC-250-342	BK on WT	11.1	2.1m	1 roll cont.	16-8 Gauge	2.4 - 5.5
143232	MC-250-342-YL	BK on YL	11.1	2.1m	1 roll cont.	16-8 Gauge	2.4 - 5.5
134029	MC1-375-342	BK on WT	16.4	2.1m	1 roll cont.	12-4 Gauge	3.2 - 8.1



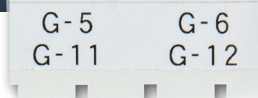
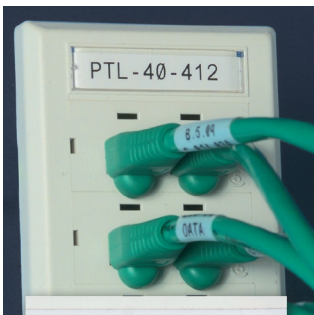
Wrap Around Wire & Cable Markers and Flags

Durable vinyl cloth wrap around wire and cable markers made with an adhesive that allows the markers to be removed cleanly and reapplied if necessary.

- Highly unique adhesive and cloth construction
- Ideal choice for marking both ends of a wire that may need be cut shorter before final termination

Part No.	Reference	Colour	Label Width (mm)	Label Length (mm)	Labels per Roll	Wire Gauge	Max Wire Diameter (mm)
B-498 - Repositionable Vinyl Cloth Labels							
143332	M-11-498	BK on WT	12.7	19.1	220	16 - 10 Gauge	4.1
143334	M-131-498	BK on WT	12.7	25.4	180	10 - 4 Gauge	6.7
143333	M-163-498	BK on WT	12.7	25.4	180	12 - 10 Gauge	5.3
131586	M-48-498	BK on WT	19.1	25.4	180	12 - 10 Gauge	5.3
131590	M-49-498	BK on WT	25.4	25.4	160	12 - 10 Gauge	5.3
143331	M-7-498	BK on WT	12.7	12.7	240	22 - 16 Gauge	2.8
131578	M-91-498	BK on WT	25.4	38.1	120	10 - 4 Gauge	6.7

Part No.	Reference	Colour	Label Width (mm)	Label Length (mm)	Non-Print Area (mm)	Labels per Roll	Material Notes
B-499 - Nylon Cloth Labels							
131588	M-141-499	BK on WT	25.4	25.4	6.3	90	Approx. 25.4 x 25.4 mm resulting flag size



Patch Panel, Punch Block, Desi Strip and Faceplate Labels

Create the labels you need in one easy process. Create a fully-formatted serialised punch block label to fit your equipment or label your ports, jacks and outlets with adhesive labels or slide-in strips.

- Durable materials with permanent adhesive
- Available in a variety of sizes and colours for marking racks, bays, frames, slots and other voice/data hardware
- High adhesion to textured metals, powder coated surfaces and low surface energy plastics

Part No.	Reference	Colour	Label Width (mm)	Label Length (mm)	Labels per Roll	Material Notes
B-412 - Polypropolene Tags						
143235	MC-375-412	BK on WT	9.5	6.1m	1 roll cont.	Non-Adhesive Slide-in Strips
143236	MC-475-412	BK on WT	12.1	6.1m	1 roll cont.	Non-Adhesive Slide-in Strips
143237	MC-625-412	BK on WT	15.8	6.1m	1 roll cont.	Non-Adhesive Slide-in Strips
B-422 - Polyester Labels						
143239	MC-375-422	BK on WT	9.5	7.6m	1 roll cont.	Adhesive Stick-on Strips
143240	MC-475-422	BK on WT	12.1	7.6m	1 roll cont.	Adhesive Stick-on Strips
143241	M-7-422	BK on WT	12.7	12.7	280	Stick-on Individual labels
131576	M-90-422	BK on WT	19.1	38.1	180	Stick-on Individual labels
131577	M-89-422	BK on WT	12.7	38.1	180	Stick-on Individual labels
131592	M-47-422	BK on WT	25.4	12.7	480	Stick-on Individual labels



Equipment, Component, Panel and Rating Plate Labels

Equipment and component labels are long-lasting, durable materials that make it easy to identify control, electrical materials and more. Ideal for marking backer boards, DIN rail, relays, PLCs, switches, solenoids and more. Rating plate labels create serial or rating plates with barcodes, graphics and more.

- Flexible with high-tack adhesives for easy and long-lasting adhesion
- Various sizes in several durable materials
- Rating plate labels offer a metal looking finish



Part No.	Reference	Colour	Label Width (mm)	Label Length (mm)	Labels per Roll
B-422 - Polyester Labels					
131592	M-47-422	BK on WT	25.4	12.7	480
131608	M-49-422	BK on WT	25.4	25.4	260
143241	M-7-422	BK on WT	12.7	12.7	280
131577	M-89-422	BK on WT	12.7	38.1	180
131576	M-90-422	BK on WT	19.1	38.1	180
143239	MC-375-422	BK on WT	9.5	7.6m	1 roll cont.
143240	MC-475-422	BK on WT	12.1	7.6m	1 roll cont.
143242	MC-500-422	BK on WT	12.7	7.6m	1 roll cont.
143243	MC-625-422	BK on WT	15.8	7.6m	1 roll cont.
131595	MC1-1000-422	BK on WT	25.4	7.6m	1 roll cont.
B-428 - Metalized Polyester Labels					
131602	M-47-428	BK on SV	25.4	12.7	480
131603	M-60-428	BK on SV	25.4	50.8	140
133064	M-92-428-BB	Bk on SV	12.7	28.7	239
B-483 - Ultra Aggressive Adhesive Polyester					
131599	M-60-483	BK on WT	25.4	50.8	140

Part No.	Reference	Colour	Label Width (mm)	Label Length (mm)	Labels per Roll
B-499 - Nylon Cloth Labels					
143352	M-11-499	BK on WT	19.1	12.7	220
131600	M-128-499	BK on WT	25.4	48.3	100
143348	M-130-499	BK on WT	20.9	9.5	220
143350	M-131-499	BK on WT	25.4	12.7	180
131588	M-141-499	BK on WT	25.4	25.4	90
143353	M-84-499	BK on WT	22.8	12.7	200
143349	MC-375-499	BK on WT	9.5	4.9m	1 roll cont.
143351	MC-500-499	BK on WT	12.7	4.9m	1 roll cont.
143351	MC-750-499	BK on WT	19.1	4.9m	1 roll cont.
B-595 Indoor/Outdoor Vinyl Tapes *					
143367	MC-500-595-OR-BK	BK on OR	12.7	7.6m	1 roll cont.
143368	MC-750-595-OR-BK	BK on OR	19.1	7.6m	1 roll cont.
131593	MC1-1000-595-OR-BK	BK on OR	25.4	7.6m	1 roll cont.

* For additional general purpose tapes, refer to the Indoor/Outdoor Grade Facility and Safety Labels on page 7.



Bin, Storage, Reflective and General Industrial Labels

Choose from several materials and types of labels that offer an aggressive adhesive for use in commercial and industrial applications. Bin, storage & industrial labels are ideal for commercial/industrial applications, while reflective can be used for low light or inclement weather conditions.

- Recommended for low surface energy and textured surfaces
- Reflective is ideal for outdoor utility poles and pedestals, job-site equipment and roof-top equipment



Part No.	Reference	Colour	Label Width (mm)	Label Length (mm)	Labels per Roll
B-422 - Polyester Labels					
131592	M-47-422	BK on WT	25.4	12.7	480
131608	M-49-422	BK on WT	25.4	25.4	260
143241	M-7-422	BK on WT	12.7	12.7	280
131577	M-89-422	BK on WT	12.7	38.1	180
131576	M-90-422	BK on WT	19.1	38.1	180
131595	MC1-1000-422	BK on WT	25.4	7.6m	1 roll cont.
143239	MC-375-422	BK on WT	9.5	7.6m	1 roll cont.
143240	MC-475-422	BK on WT	12.1	7.6m	1 roll cont.
143242	MC-500-422	BK on WT	12.7	7.6m	1 roll cont.
143243	MC-625-422	BK on WT	15.9	7.6m	1 roll cont.
B-483 - Ultra Aggressive Adhesive Polyester					
131602	M-47-483	BK on WT	25.4	12.7	480
131599	M-60-483	BK on WT	25.4	50.8	140
B-499 Nylon Cloth Labels					
143352	M-11-499	BK on WT	19.1	12.7	220
131600	M-128-499	BK on WT	25.4	48.3	100

Part No.	Reference	Colour	Label Width (mm)	Label Length (mm)	Labels per Roll
143348	M-130-499	BK on WT	9.5	20.9	220
143350	M-131-499	BK on WT	12.7	15.4	180
143353	M-84-499	BK on WT	22.8	12.7	200
143349	MC-375-499	BK on WT	9.5	4.9m	1 roll cont.
143351	MC-500-499	BK on WT	12.7	4.9m	1 roll cont.
143360	MC-750-499	BK on WT	19.1	4.9m	1 roll cont.
B-584 Reflective Tape					
143403	MC-500-584	BK on WT	12.7	6.1m	1 roll cont.
143407	MC-500-584-YL	BK on YL	12.7	6.1m	1 roll cont.
143404	MC-750-584	BK on WT	19.1	6.1m	1 roll cont.
143408	MC-750-584-YL	BK on YL	19.1	6.1m	1 roll cont.
B-595 - Indoor/Outdoor Vinyl Tape*					
143399	MC-500-595-RD-WT	WT on RD	12.7	7.6m	1 roll cont.
143400	MC-750-595-RD-WT	WT on RD	19.1	7.6m	1 roll cont.
131596	MC1-1000-595-RD-WT	WT on RD	25.4	7.6m	1 roll cont.

* For additional general purpose tapes, refer to the Indoor/Outdoor Grade Facility and Safety Labels on page 7.



Indoor / Outdoor Grade Facility & Safety Labels

Pliable vinyl that conforms well to smooth or rough surfaces such as pipes, walls, doors, panels, shelving, bins and equipment. Lasting up to 8-10 years outdoors, these labels offers excellence resistance to oils, detergents, dirt, grime and many solvents.

- Durable, low-shrink vinyl with our most aggressive adhesive
- Works for a variety of applications , including 5S labels, pipe markers, arc flash and chemical labels and more

Part No.	Reference	Colour	Label Width (mm)	Label Length (mm)	Labels per Roll	Part No.	Reference	Colour	Label Width (mm)	Label Length (mm)	Labels per Roll
B-595 - Indoor/Outdoor Vinyl Tape						143395	MC-500-595-GN-WT	WT on GN	12.7	7.6m	1 roll cont.
143371	MC-500-595-WT-BK	BK on WT	12.7	7.6m	1 roll cont.	143396	MC-750-595-GN-WT	WT on GN	19.1	7.6m	1 roll cont.
143372	MC-750-595-WT-BK	BK on WT	19.1	7.6m	1 roll cont.	131598	MC1-1000-595-GN-WT	WT on GN	25.4	7.6m	1 roll cont.
131582	MC1-1000-595-WT-BK	BK on WT	25.4	7.6m	1 roll cont.	143399	MC-500-595-WT-RD	RD on WT	12.7	7.6m	1 roll cont.
143375	MC-500-595-YL-BK	BK on YL	12.7	7.6m	1 roll cont.	143400	MC-750-595-WT-RD	RD on WT	19.1	7.6m	1 roll cont.
143376	MC-750-595-YL-BK	BK on YL	19.1	7.6m	1 roll cont.	131596	MC1-1000-595-WT-RD	RD on WT	25.4	7.6m	1 roll cont.
131583	MC1-1000-595-YL-BK	BK on YL	25.4	7.6m	1 roll cont.	143383	MC-500-595-BK-WT	WT on BK	12.7	7.6m	1 roll cont.
143367	MC-500-595-OR-BK	BK on OR	12.7	7.6m	1 roll cont.	143384	MC-750-595-BK-WT	WT on BK	19.1	7.6m	1 roll cont.
143368	MC-750-595-OR-BK	BK on OR	19.1	7.6m	1 roll cont.	131606	MC1-1000-595-BK-WT	WT on BK	25.4	7.6m	1 roll cont.
131593	MC1-1000-595-OR-BK	BK on OR	25.4	7.6m	1 roll cont.	143363	MC-500-595-CL-BK	BK on CL	12.7	7.6m	1 roll cont.
143387	MC-500-595-BL-WT	WT on BL	12.7	7.6m	1 roll cont.	143364	MC-750-595-CL-BK	BK on CL	19.1	7.6m	1 roll cont.
143388	MC-750-595-BL-WT	WT on BL	19.1	7.6m	1 roll cont.	131597	MC1-1000-595-CL-BK	BK on CL	25.4	6.1m	1 roll cont.
131594	MC1-1000-595-BL-WT	WT on BL	25.4	7.6m	1 roll cont.	143391	MC-500-595-CL-WT	WT on CL	12.7	7.6m	1 roll cont.
143399	MC-500-595-RD-WT	WT on RD	12.7	7.6m	1 roll cont.	143392	MC-750-595-CL-WT	WT on CL	19.1	7.6m	1 roll cont.
143400	MC-750-595-RD-WT	WT on RD	19.1	7.6m	1 roll cont.	131607	MC1-1000-595-CL-WT	WT on CL	25.4	6.1m	1 roll cont.
131596	MC1-1000-595-RD-WT	WT on RD	25.4	7.6m	1 roll cont.						



Terminal Block Markers

Specially-designed markers that offer a highly unique adhesive and vinyl cloth construction for excellent holding power, while still allowing for clean removal and application.

- Specially designed narrow-width continuous label for alignment on terminal blocks and patch panels
- LabelMark™ Software can auto-serialize these labels to help save you time

Part No.	Reference	Colour	Label Width (mm)	Label Length (mm)	Labels per Roll
B-498 - Repositionable Vinyl Cloth Labels					
143328	MC-240-498	BK on WT	6.1	4.9	1 roll cont.
143329	MC-318-498	BK on WT	8.1	4.9	1 roll cont.
143330	MC-375-498	BK on WT	9.5	4.9	1 roll cont.

Magnet Accessory Available

The BMP®41 printer offers a heavy-duty magnet accessory that allows you to go hands-free. Apply the magnet to the back of your printer and then stick it to a magnetised surface or wall.



BMP[®]41 LABEL PRINTER



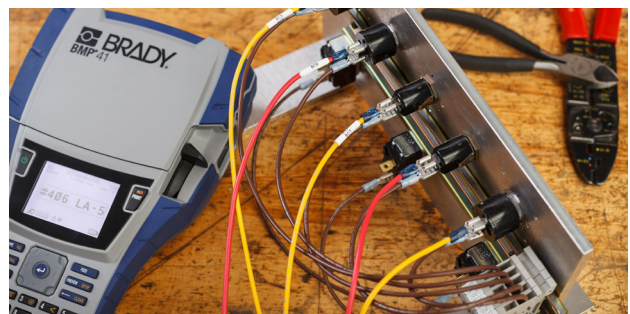
Printer Part Numbers

Part No.	Description
876182	BMP [®] 41 Label Printer with Hard Case
133255	BMP [®] 41 Battery
134176	BMP [®] 41 Magnetic Accessory
133257	BMP [®] 41 Hard Case
876185	BMP [®] 41 External Battery Quick Charger
876184	BMP [®] 41 AC Adapter
133258	BMP [®] 41 USB Cable

* Printer ships with Nickel Battery Pack, MC1-1000-595-WT-BK cartridge, USB Cable, AC Adapter Product CD, Brady Printer Drivers CD and Quick Start Guide.

Printer Specifications

Applications	Wire and Cable ID, Datacomm and Audio/Visual labelling, Electrical ID, Panel ID, Product ID, Facility ID, Safety and Maintenance, General ID
Printing Modes	Wire Wrap, Terminal block, Patch panel, Flags, General, 66-Block, 110-Block, BIX Block, Desistrip
Printer Functions	Print Preview, Serialization, Date/time stamp, Fixed length, Mirror, Vertical, Rotate, Auto format, Multi-copy, Banner, Frame feature
Print Technology	Thermal transfer, 300 DPI
Print Speed	33mm/sec
Colour Capability	Single Colour Printing
Max Labels per Day	250
Keyboard Type	QWERTY
Cutter Type	Manual
LCD Size	63 x 38mm with Backlit
Size	260H x 152W x 91D mm
Weight incl. Battery, Media	2.85 lbs
Power Supply	Rechargeable NiMH Battery pack with life indicator or AC
Memory	48 MB / Up to 25000 Labels
PC/Software Connectivity	Optional through USB
Stand Alone Printing	Yes
Material Types	Continuous and Die Cut
Print Mechanism	Cartridge with ribbon match and smart cell media detection
Min/Max Label	5.9 - 25.4mm width and up to 990mm length
Material Variety	190+ stock parts
Material Types	Clear Polyester, Metalized Polyester, Polyester, Heat Shrink Polyolefin Tubing, Polypropylene, Self-laminating Vinyl, Vinyl, Vinyl Cloth
Font Sizes	4 to 103 point with autosizing
Built in Symbols	445
Barcode	Code 39 & UCC128 standalone, additional via software
Warranty	2 Years



Learn more now about the BMP[®]41 Label Printer at www.bradyid.com.au/bmp41.

Brady Australia Pty Ltd
Customer Service: 1800 620 816
www.bradyid.com.au

BRADY
WHEN PERFORMANCE MATTERS MOST™