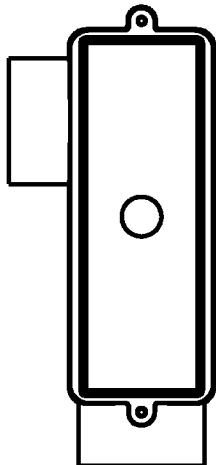
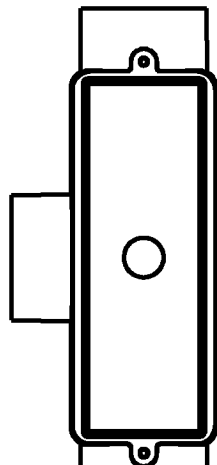


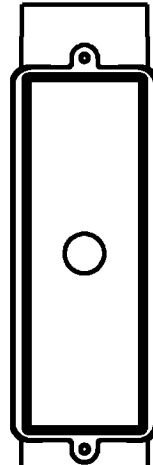
Carlton®



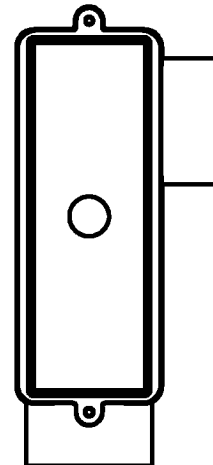
E985H
E985H-CAR
TYPE LR



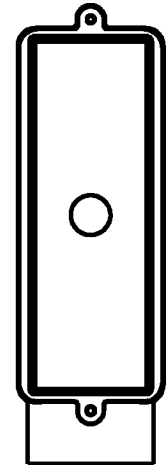
E983H
E983H-CAR
TYPE T



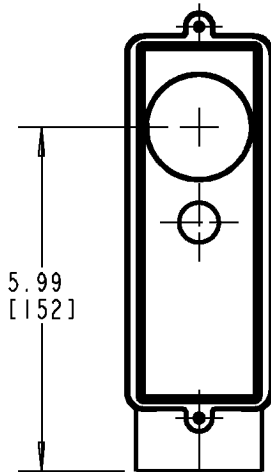
E987H
E987H-CAR
TYPE C



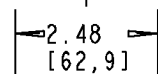
E984H
E984H-CAR
TYPE LL



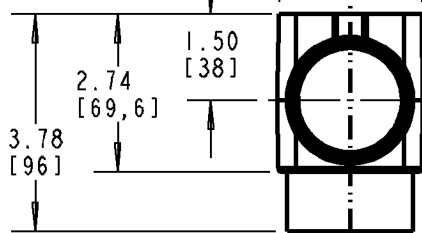
E988H
E988H-CAR
TYPE E



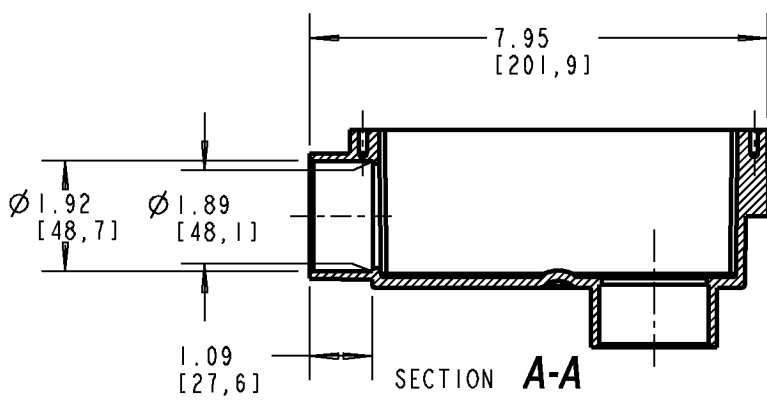
E986H
E986H-CAR
E986HR
E986HRCL
E986HRL
TYPE LB



A



A



NOTES:

1. FITTING ASSEMBLIES INCLUDE:
 - 1 - FITTING BODY
 - 1 - GASKET
 - 1 - COVER
 - 2 - SCREWS
2. PORT DIMENSIONS ARE TYPICAL REGARDLESS OF POSITION.

GENERAL NOTES

1. ALL DIMENSIONS ARE FOR REFERENCE ONLY.
2. DIMENSIONS IN BRACKETS [] ARE IN METRIC UNITS.

REVISIONS

*** SEE ERN (****) FOR APPROVAL SIGNATURES & RELEASE DATE. PROJECT NO: ****

Thomas & Betts
www.tnb.com

DESCRIPTION:

ACCESS FITTINGS - 1 1/2"

ORIGINAL PROJECT NO / (ERN NO)

/ ()

SHEET NO:

1 OF 1

REV. NO:

A

DRAWING NO:

WSD-AC04834