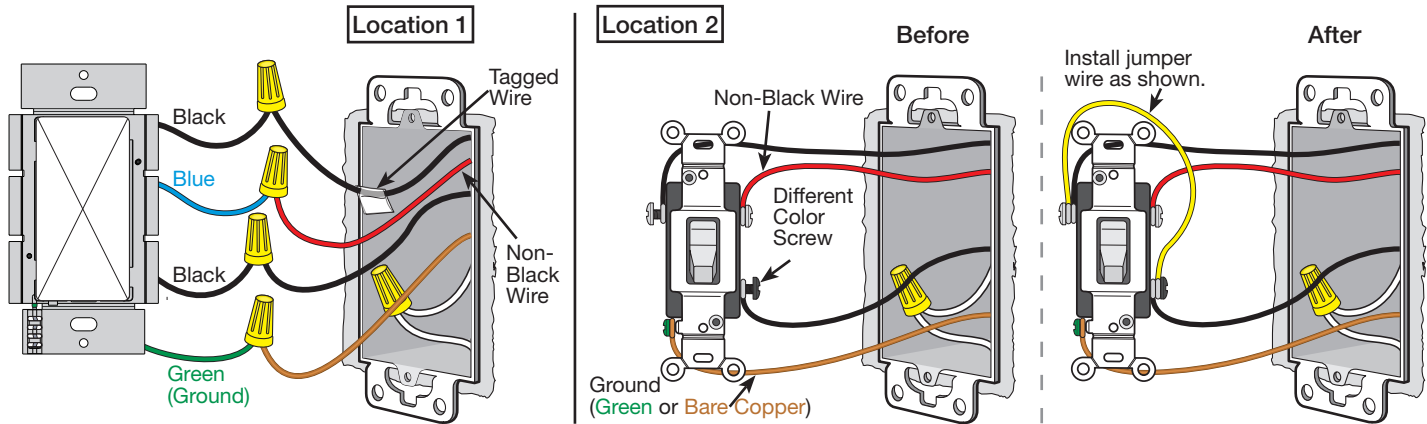


Image #13 — Switch with Two Black Wires and One Blue Wire in a 3-Way Application with a Mechanical Switch



Note: If using a sensor switch, both ground wires must be connected for the sensor to operate.

Not sure this is the correct wiring for your Lutron product?

For more information, refer to the Lutron [DIY Wiring Tool](#) or visit the [Lutron Support Center](#).