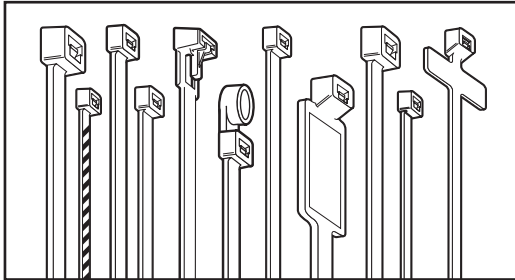


**Catamount® Cable Ties**

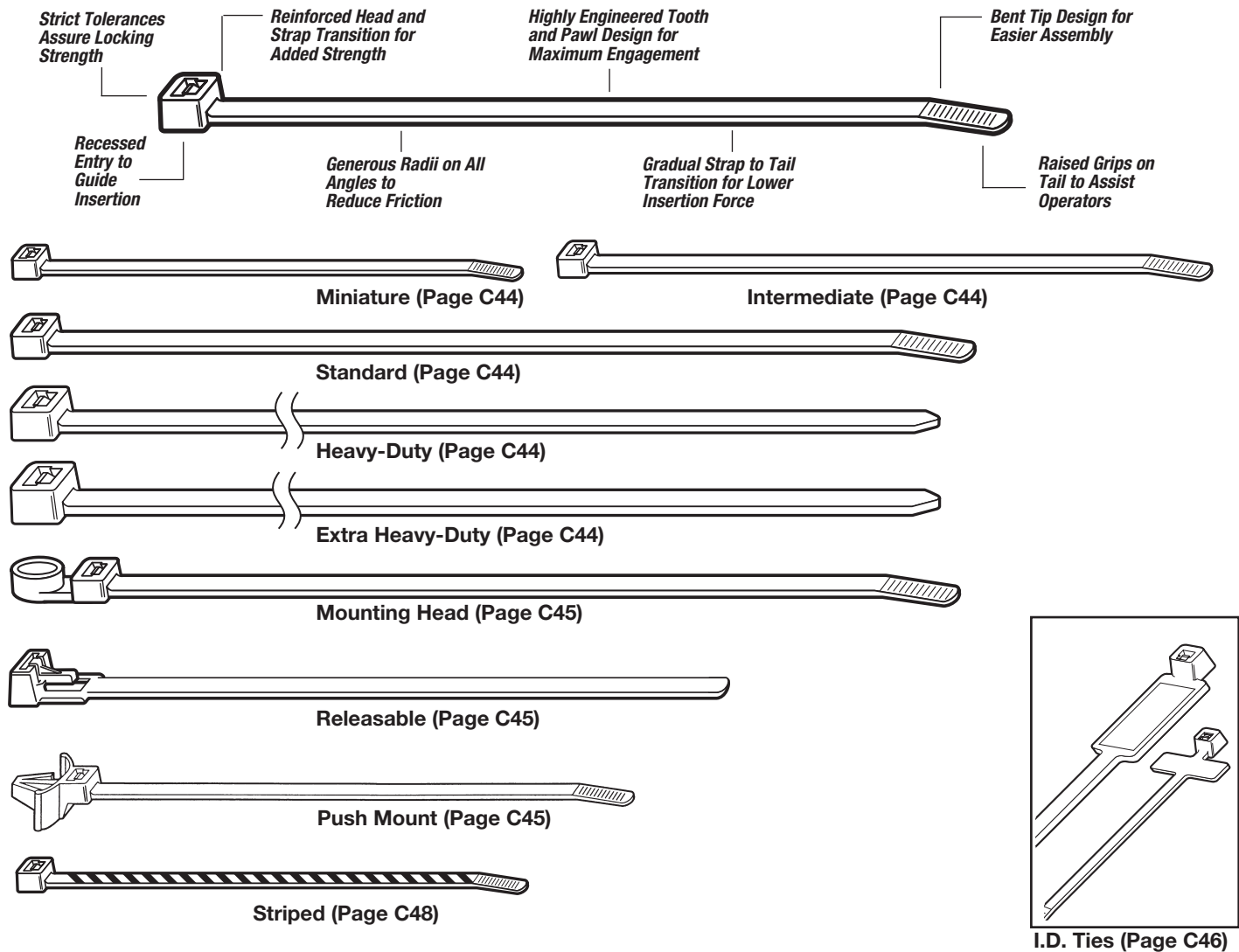


- Miniature
- Heavy-Duty
- Intermediate
- Extra Heavy-Duty
- Standard
- Releasable Ties
- Mounted Head
- Striped Ties
- Restricted Bundle
- Identification Ties

Catamount® Cable Ties are available in lengths from 4 in. to our exclusive 48 in. strap. Cable Ties will satisfy bundling requirements from 1/16 in. to 15 in. and loop tensile strengths from 18 to 175 pounds. Cable Ties are stocked in materials and colours as listed. Contact your Regional Sales Office for availability in special colours. Where applicable, Catamount® Cable Ties are UL Recognized.

State-of-the-art robotic and raw material handling equipment assures product and material integrity throughout the manufacturing process. Overall quality is achieved through statistical analysis and quality driven operator objectives.

Catamount® products are sold through stocking T&B® Distributors.



## Catamount® Cable Ties

### Catalogue Number Construction

**L**      **4**      **18**      **HS**      **-**      **9**      **M**

**Product Prefix**  
P - Plain Bagged Cable Ties  
L - Cable Ties

**Length**  
18 lb.  
30 lb.  
40 lb.  
50 lb.  
120 lb.  
175 lb.  
250 lb.

**Tensile Strength**

**Type of Product**  
Nylon 6/6 - Leave Blank  
Heat Stabilized - HS  
(Black and Natural Colour Only)  
Fluorescent - FL  
Mounting Head - MH  
Pushmount - PM  
Pushmount Releasable - PMR  
Releasable - R  
Restricted Bundle - TB  
Identification - ID

**Colour**  
See Colour Table

**Quantity**  
Q - 25 pack  
L - 50 pack  
C - 100 pack  
D - 500 pack  
M - 1,000 pack

**MP**      **NY**      **-**      **750**      **-**      **9**      **C**

**Material**  
Nylon  
TZ - Fluoropolymer  
PV - PVC  
PE - Polyethylene  
FR - Flame Retardant  
TL - Teflon

**Size / #**  
.75"

**Colour**  
See Colour Table

**Quantity**  
Q - 25 pack  
L - 50 pack  
C - 100 pack  
D - 500 pack  
M - 1,000 pack

- Product Prefix**
- MP - Mounting Pad
  - ID - Identification
  - S# - Strapping Thickness
  - MC - Mounting Cradle
  - PM - Push Mounts
  - SM - Screw Mounts
  - N# - Plain-Edged Cable Clamps / Width
  - W# - Self-Aligning Cable Clamps / Dia.
  - UL - Adjustable Cable Clamps
  - GG - Gator Grip
  - FA - Flat Adhesive Clip
  - FS - Flat Screw Clip
  - FR - Flat Rubber Adhesive Clip
  - MS - Snap Mount
  - RA - Round Adhesive Clip
  - SR - Spiral Wrap
  - GS - Grommeting
  - GR - Extruded Grommeting
  - GRU - Extruded Grommeting Uncut

| Colour Table        |                         |
|---------------------|-------------------------|
| 0 - Black           | 7 - Purple              |
| (Weather-Resistant) | 8 - Grey                |
| 1 - Brown           | 9 - Natural             |
| 2 - Red             | 11 - Fluorescent Pink   |
| 3 - Orange          | 16 - Fluorescent Orange |
| 4 - Yellow          | 17 - Fluorescent Yellow |
| 5 - Green           | 18 - Fluorescent Green  |
| 6 - Blue            | 20 - Fluorescent Blue   |

## Catamount® Cable Ties

| Property                                      | ASTM Method | Test Condition            | Units                 | Molded 6/6 Nylon | Heat Stabilized Nylon | UV Black Nylon |
|---|-------------|---------------------------|-----------------------|------------------|-----------------------|----------------|
| <b>Materials for Molded Assembly Hardware</b> |             |                           |                       |                  |                       |                |
| Tensile Strength                              | D638        | +23°C; 50% RH             | kpsi                  | 11.2             | 11.2                  | 9.0            |
| Elongation at Break                           | D638        | +23°C; 50% RH             | %                     | Z300             | Z300                  | 200            |
| Yield Strength                                | D638        | +23°C; 50% RH             | kpsi                  | 8.5              | 8.5                   | 9.0            |
| Shear Strength                                | D732        | Dry As Molded (DAM)       | kpsi                  | 9.6              | 9.6                   | 10.5           |
| Deformation Under Load                        | D621        | 2,000 psi<br>+50°C; DAM   | %                     | 1.4              | 1.4                   | 1.2            |
| IZOD Impact                                   | D256        | +23°C; 50% RH             | ft. lb./in.           | 2.1              | 2.1                   | 2.0            |
| Tensile Impact Strength                       | D1822       | +23°C; Long Specimen; DAM | ft. lb./in.2          | 240              | 240                   | N.R.           |
| Melting Point                                 | D789        | Fisher-Johns              | °F                    | 491              | 491                   | 491            |
| Thermal Linear Expansion                      | D696        | DAM                       | in./in./°F            | 4 x 10-5         | 4 x 10-5              | N.R.           |
| Thermal Conductivity                          | —           | DAM Conche-Fitch          | BTU - in/h . ft2 . °F | 1.7              | 1.7                   | 1.7            |
| Brittleness Temperature                       | D746        | 50% RH                    | °F                    | -85              | -85                   | -62            |
| Oxygen Index                                  | D2863       | DAM<br>50% RH             | %O2                   | 28<br>31         | 28<br>31              | 25<br>31       |
| UL Flammability                               | UL 94       | DAM<br>50% RH             | —<br>—                | V-2<br>V-2       | V-2<br>V-2            | V-2<br>V-2     |

- Material data as provided by our suppliers
- N.R. = Not Reported
- Tests conducted on 1/4 in. specimens

### About Nylon...

Nylons possess an outstanding balance of properties combining strength, moderate stiffness, high service temperature and a high level of toughness. Nylon is particularly resistant to repeated impact, has a low co-efficient of friction and excellent abrasion resistance.

Nylon is resistant to fuels, lubricants and most chemicals, but is attacked by phenols, strong acids and oxidizing agents. Contact your Regional Sales Office for chemical data relative to your application.

Nylon is inherently susceptible to environmental conditions. Catamount® Cable Ties are moisturized to optimum performance levels at machine-side and should be stored in cool dry areas out of direct sunlight. Cable Ties are packaged in plastic bags to contain moisture and should remain sealed until ready for use.

| Sample Thickness (in.)                    | UL Flammability | Energy Source                 | Specific Optical Density      |              |
|---|-----------------|-------------------------------|-------------------------------|--------------|
|   |                 |                               | at Maximum Smoke Accumulation | at 2 Minutes |
| <b>NBS Smoke Generation for 6/6 Nylon</b> |                 |                               |                               |              |
| 1/16                                      | 94 V-2          | Radiant (2.5 watts/sq cm)     | 13                            | 0            |
| 1/8                                       | 94 V-2          | Radiant Plus Flaming Gas Jets | 26                            | 1            |

Results as provided by National Bureau of Standards (NBS). Results may not be directly correlated with larger fires, such as burning buildings. Materials should be tested to your application.

| Material                                   | Minimum Thickness (in.) | Temperature Index |                            | Hot Wire Ignition (sec) |
|--|-------------------------|-------------------|----------------------------|-------------------------|
|  |                         | Electrical (°C)   | Mechanical w/o Impact (°C) |                         |
| <b>Temperature Index for Molded Nylons</b> |                         |                   |                            |                         |
| 6/6 Nylon                                  | 0.580                   | 1.25              | 85                         | 15.0                    |
| UV Black Nylon                             | 0.120                   | 1.25              | 85                         | 35.0                    |
|  | 0.240                   | 1.25              | 85                         | 35.0                    |
| Heat Stabilized Nylon                      | 0.580                   | 1.30              | 105                        | 11.0                    |
|  | 0.120                   | 1.30              | 110                        | 20.0                    |

Temperature Index is the temperature at which the specific property will decrease to one-half its original value after 60,000 hours exposure at that temperature.

## Catamount® Cable Ties

Catamount® Ties and Terminals fit the needs of general-purpose fastening and wire terminations. Installers quickly discover that Catamount® products offer durable and value-priced cable bundling for a variety of commercial and residential construction applications. Electricians can also take advantage of other benefits in stocking Catamount® products in their toolboxes, such as more terminals per bag in most popular sizes than leading comparable brands.

Catamount® Ties and Terminals are offered in a wide range of sizes, styles and colours and meet listing requirements for most electrical termination and fastening projects. A choice of matching tools are also offered to provide quick and reliable installations.



| Cat. No.                     | Length (in.) | Max. Bundle Dia. (in.) | Colour  | Std. Pkg. |
|------------------------------|--------------|------------------------|---------|-----------|
| <b>Miniature — Series 18</b> |              |                        |         |           |
| L-4-18-9-C                   | 4.0          | 5/8                    | Natural | 100       |
| L-4-18-0-C                   |              |                        | Black   |           |
| L-6-18-9-C                   | 6.4          | 1-1/2                  | Natural |           |
| L-6-18-0-C                   |              |                        | Black   |           |
| L-8-18-9-C                   | 8.0          | 2                      | Natural |           |
| L-8-18-0-C                   |              |                        | Black   |           |

Bulk packages available. Contact your Regional Sales Office.  
Use QC-100, L-200, L-400-C or ERG-50 Installation Tools.



| Cat. No.                        | Length (in.) | Max. Bundle Dia. (in.) | Colour  | Std. Pkg. |
|---------------------------------|--------------|------------------------|---------|-----------|
| <b>Intermediate — Series 30</b> |              |                        |         |           |
| L-5-30-9-C                      | 5.6          | 1-1/4                  | Natural | 100       |
| L-5-30-0-C                      |              |                        | Black   |           |
| L-8-40-9-C                      | 8.5          | 2                      | Natural |           |
| L-8-40-0-C                      |              |                        | Black   |           |
| L-11-40-9-C                     | 11.5         | 3                      | Natural |           |
| L-11-40-0-C                     |              |                        | Black   |           |
| L-14-40-9-C                     | 14.5         | 4                      | Natural |           |
| L-14-40-0-C                     |              |                        | Black   |           |

Bulk packages available. Contact your Regional Sales Office.  
Use QC-100, L-200, L-400-C or ERG-50 Installation Tools.



| Cat. No.                    | Length (in.) | Max. Bundle Dia. (in.) | Colour  | Std. Pkg. |
|-----------------------------|--------------|------------------------|---------|-----------|
| <b>Standard — Series 50</b> |              |                        |         |           |
| L-5-50-9-C                  | 5.5          | 1                      | Natural | 100       |
| L-5-50-0-C                  |              |                        | Black   |           |
| L-7-50-9-C                  | 7.5          | 1-3/4                  | Natural |           |
| L-7-50-0-C                  |              |                        | Black   |           |
| L-11-50-9-C                 | 11.1         | 3                      | Natural |           |
| L-11-50-0-C                 |              |                        | Black   |           |
| L-14-50-9-C                 | 14.1         | 4                      | Natural |           |
| L-14-50-0-C                 |              |                        | Black   |           |

Bulk packages available. Contact your Regional Sales Office.  
Use QC-100, L-200, L-400-C or ERG-50 Installation Tools.



| Cat. No.                       | Length (in.) | Max. Bundle Dia. (in.) | Colour  | Std. Pkg. |
|--------------------------------|--------------|------------------------|---------|-----------|
| <b>Heavy-Duty — Series 120</b> |              |                        |         |           |
| L-8-120-9-C                    | 8.0          | 2                      | Natural | 100       |
| L-8-120-0-C                    |              |                        | Black   |           |
| L-11-120-9-C                   | 11.1         | 3                      | Natural |           |
| L-11-120-0-C                   |              |                        | Black   |           |
| L-14-120-9-C                   | 14.2         | 4                      | Natural |           |
| L-14-120-0-C                   |              |                        | Black   |           |
| L-18-120-9-L                   | 18.0         | 4-7/8                  | Natural | 50        |
| L-18-120-0-L                   |              |                        | Black   |           |
| L-24-120-9-L                   | 24.2         | 7                      | Natural |           |
| L-24-120-0-L                   |              |                        | Black   |           |
| L-28-120-9-L                   | 28.0         | 8                      | Natural |           |
| L-28-120-0-L                   |              |                        | Black   |           |

Use L-300C or ERG-120 Installation Tools.



| Cat. No.                             | Length (in.) | Max. Bundle Dia. (in.) | Colour  | Std. Pkg. |
|--------------------------------------|--------------|------------------------|---------|-----------|
| <b>Extra Heavy-Duty — Series 175</b> |              |                        |         |           |
| L-24-175-9-L                         | 24.00        | 7.2                    | Natural | 50        |
| L-24-175-0-L                         |              |                        | Black   |           |
| L-34-175-9-L                         | 34.0         | 10                     | Natural |           |
| L-36-175-9-L                         |              |                        | 36.0    |           |
| L-36-175-0-L                         | Black        |                        |         |           |
| L-41-175-9-L                         | 41.0         | 12                     | Natural |           |
| L-41-175-0-L                         |              |                        | Black   |           |
| L-48-175-9-L                         | 48.0         | 15                     | Natural |           |
| L-48-175-0-L                         |              |                        | Black   |           |

Use L300-FR or ERG-120 Installation Tools.

### Sample Catalogue Order:

Length: L 4 18 9 C  
Colour: 9 C  
Tensile Strength: 4  
Quantity: 18

4 in. Length, 18 lb. Tensile Strength, Natural Colour, 100-Pack Quantity

### Colour Table

- 0 – Black (UV Resistant)
- 1 – Brown
- 2 – Red
- 3 – Orange
- 4 – Yellow
- 5 – Green
- 6 – Blue
- 7 – Purple
- 8 – Grey
- 9 – Natural
- 11 – Fluorescent Pink
- 16 – Fluorescent Orange
- 17 – Fluorescent Yellow
- 18 – Fluorescent Green
- 20 – Fluorescent Blue

## Catamount® Cable Ties



| Cat. No.               | Length (in.) | Max. Bundle Dia. (in.) | Colour  | Std. Pkg. |
|------------------------|--------------|------------------------|---------|-----------|
| <b>Releasable Ties</b> |              |                        |         |           |
| L-5-50R-0-C            | 5.90         | 1-1/4                  | Black   | 100       |
| L-8-50R-9-C            | 7.80         | 2                      | Natural |           |
| L-8-50R-0-C            |              |                        | Black   |           |
| L-10-50R-9-C           | 11.27        | 3                      | Natural |           |
| L-10-50R-0-C           |              |                        | Black   |           |

Bulk packages available. Contact your Regional Sales Office.  
Push button release.



| Cat. No.                     | Length (in.) | Mounting Hole | Max. Panel Thickness | Max. Bundle Dia. (in.) | Colour  | Std. Pkg. |
|------------------------------|--------------|---------------|----------------------|------------------------|---------|-----------|
| <b>Push Mount Cable Ties</b> |              |               |                      |                        |         |           |
| L-5-50PM-0-C                 | 5.80         | 0.250         | 0.105                | 1                      | Black   | 100       |
| L-7-50PM-9-C                 | 8.20         |               |                      | 1-3/4                  | Natural |           |
| L-7-50PM-0-C                 |              |               |                      | Black                  |         |           |

Bulk packages available. Contact your Regional Sales Office. Use QC-100, L-200 or L-400-C Installation Tools.  
Black shown.



| Cat. No.                  | Length (in.) | Max. Bundle Dia. (in.) | Width (in.) | Min. Loop Tensile | Mounting Head Screw Size | Colour  | Std. Pkg. |
|---------------------------|--------------|------------------------|-------------|-------------------|--------------------------|---------|-----------|
| <b>Mounting Head Ties</b> |              |                        |             |                   |                          |         |           |
| L-5-30MH-9-C              | 5.85         | 1-1/4                  | 0.140       | 30                | No. 8                    | Natural | 100       |
| L-5-30MH-0-C              |              |                        |             |                   |                          | Black   |           |
| L-7-50MH-9-C              | 7.50         | 1-3/4                  | 0.185       |                   | No. 10                   | Natural |           |
| L-7-50MH-0-C              |              |                        |             |                   |                          | Black   |           |
| L-11-50MH-9-C             | 11.10        | 3                      | 0.187       | 50                | Natural                  |         |           |
| L-11-50MH-0-C             |              |                        |             |                   | Black                    |         |           |
| L-14-50MH-9-C             | 14.50        | 4                      | 0.300       | 120               | 1/4 in.                  | Natural |           |
| L-14-50MH-0-C             |              |                        |             |                   |                          | Black   |           |
| L-14-120MH-9-C            | 14.85        | 4                      | 0.300       | 120               | 1/4 in.                  | Natural |           |
| L-14-120MH-0-C            |              |                        |             |                   |                          | Black   |           |

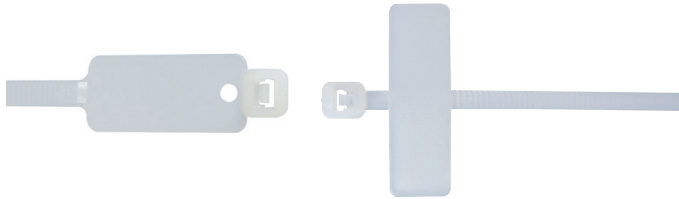
Bulk packages available. Contact your Regional Sales Office. Use QC-100, L-200, L-400-C, ERG-120 or ERG-50 Installation Tools.



| Cat. No.                                | Length (in.) | Mounting Hole | Max. Panel Thickness | Max. Bundle Dia. (in.) | Colour  | Std. Pkg. |
|---|--------------|---------------|----------------------|------------------------|---------|-----------|
| <b>Releasable Push Mount Cable Ties</b> |              |               |                      |                        |         |           |
| L-5-50PMR-9-C                           | 5.80         | 0.250         | 0.105                | 1                      | Natural | 100       |
| L-7-50PMR-9-C                           | 8.20         |               |                      | 1-3/4                  | Natural |           |
| L-7-50PMR-0-C                           |              |               |                      | Black                  |         |           |

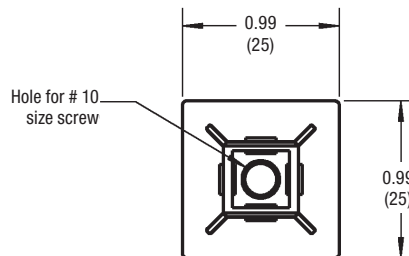
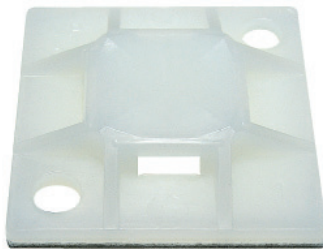
Bulk packages available. Contact your Regional Sales Office. Use QC-100, L-200 or L-400-C Installation Tools.

## Catamount® Cable Ties



| Cat. No.                   | Length (in.) | Max. Bundle Dia. (in.) | Colour  | Std. Pkg. |
|----------------------------|--------------|------------------------|---------|-----------|
| <b>Identification Ties</b> |              |                        |         |           |
| <b>L-7-50ID-9-C</b>        | 7.875        | 1-3/4                  | Natural | 100       |
| <b>L-4-18ID-9-C</b>        | 4.0          | 3/4                    | Natural |           |

Bulk packages available. Contact your Regional Sales Office.  
Use QC-100, L-200, L-400-C or ERG-50 Installation Tools.

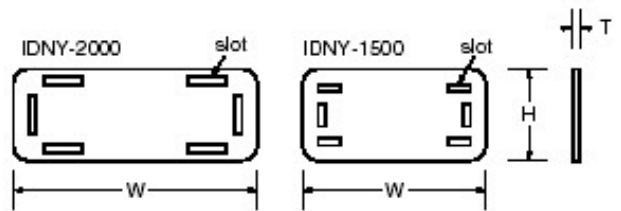


| Cat. No.                        | Mount Method  | Colour        |
|---------------------------------|---|---------------|
| <b>Cable Tie Mounting Bases</b> |   |               |
| Catégorie 3/4 po                |   |               |
| <b>MPNY-750-9-C</b>             | Synthetic Rubber Adhesive                             | Natural       |
| <b>MPNY-750-0-C</b>             | Synthetic Rubber Adhesive                             | Black         |
| <b>MPNY-750A-9-C</b>            | Acrylic Adhesive                                      | Natural       |
| <b>MPNY-750A-0-C</b>            | Acrylic Adhesive                                      | Black         |
| <b>MPNY-750S-9-C</b>            | Synthetic Rubber Adhesive<br>c/w #10 Center Bolt Hole | Natural       |
| <b>MPNY-750S-0-C</b>            |   | Black         |
| 1 in. Class                     |   |               |
| <b>MPNY-1000-9-C</b>            | Synthetic Rubber Adhesive                             | Natural Nylon |
| <b>MPNY-1000-0-C</b>            | Synthetic Rubber Adhesive                             | Black Nylon   |
| <b>MPNY-1000A-9-C</b>           | Acrylic Adhesive                                      | Natural Nylon |
| <b>MPNY-1000A-0-C</b>           | Acrylic Adhesive                                      | Black Nylon   |
| <b>MPNY-1000S-9-C</b>           | Synthetic Rubber Adhesive<br>c/w #10 Center Bolt Hole | Natural Nylon |
| <b>MPNY-1000S-0-C</b>           |   | Black Nylon   |

**For use with 18–50 lb. Cable Ties.**

- Mounting Surface should be cleaned with alcohol based (IPA) cleaner before application
- Acrylic Based may be repositioned initially. Allow 24–72 hours setup for maximum performance with Acrylic Based adhesives
- For Rubber Based, allow 15 minutes setup for maximum performance

Catamount® Cable Ties



| Cat. No.                   | Width (in.) | Height (in.) | Slot Height (in.) | Slot Width (in.) | Colour  | Std. Pkg. |
|----------------------------|-------------|--------------|-------------------|------------------|---------|-----------|
| <b>Identification Tags</b> |             |              |                   |                  |         |           |
| IDNY-1500-9-M              | 1.5         | 0.745        | 0.090             | 0.200            | Natural | 100       |
| IDNY-2000-9-M              | 2.0         |              | 0.113             | 0.336            | Natural |           |

- 3/4 in. and 1 in. mounts for use with 18# through 50# tensile cable ties
- Supplied on rubber-based or acrylic closed cell foam adhesive or with no adhesive for #10 screw mount applications
- Available in Natural Nylon 6/6 and Black Nylon 6/6
- UL Flammability 94 V-2 (clip)

## Catamount® Cable Ties



- Striped ties are used to identify wire bundles primarily for P.I.C. and station cable binder marking
- Telecom applications

| Cat. No.            | Tie Colour | Stripe Colour | Diameter   |        | Length |      | Width |      | Loop Tensile |     | Std. Pkg. |
|---------------------|------------|---------------|------------|--------|--------|------|-------|------|--------------|-----|-----------|
|                     |            |               | (in.)      | (mm)   | (in.)  | (mm) | (in.) | (mm) | lb.          | kg  |           |
| <b>Striped Ties</b> |            |               |            |        |        |      |       |      |              |     |           |
| L-4-18-1/10-L       | Brown      | White         | 1/16 - 7/8 | 2 - 16 | 4.0    | 102  | 0.100 | 3    | 18           | 8.2 | 50        |
| L-4-18-1/2-L        |            | Red           |            |        |        |      |       |      |              |     |           |
| L-4-18-1/0-L        |            | Black         |            |        |        |      |       |      |              |     |           |
| L-4-18-1/4-L        |            | Yellow        |            |        |        |      |       |      |              |     |           |
| L-4-18-1/7-L        |            | Purple        |            |        |        |      |       |      |              |     |           |
| L-4-18-3/10-L       | Orange     | White         |            |        |        |      |       |      |              |     |           |
| L-4-18-3/2-L        |            | Red           |            |        |        |      |       |      |              |     |           |
| L-4-18-3/0-L        |            | Black         |            |        |        |      |       |      |              |     |           |
| L-4-18-3/4-L        |            | Yellow        |            |        |        |      |       |      |              |     |           |
| L-4-18-3/7-L        |            | Purple        |            |        |        |      |       |      |              |     |           |
| L-4-18-5/10-L       | Green      | White         |            |        |        |      |       |      |              |     |           |
| L-4-18-5/2-L        |            | Red           |            |        |        |      |       |      |              |     |           |
| L-4-18-5/0-L        |            | Black         |            |        |        |      |       |      |              |     |           |
| L-4-18-5/4-L        |            | Yellow        |            |        |        |      |       |      |              |     |           |
| L-4-18-5/7-L        |            | Purple        |            |        |        |      |       |      |              |     |           |
| L-4-18-6/10-L       | Blue       | White         |            |        |        |      |       |      |              |     |           |
| L-4-18-6/2-L        |            | Red           |            |        |        |      |       |      |              |     |           |
| L-4-18-6/0-L        |            | Black         |            |        |        |      |       |      |              |     |           |
| L-4-18-6/4-L        |            | Yellow        |            |        |        |      |       |      |              |     |           |
| L-4-18-6/7-L        |            | Purple        |            |        |        |      |       |      |              |     |           |
| L-4-18-8/10-L       | Grey       | White         |            |        |        |      |       |      |              |     |           |
| L-4-18-8/2-L        |            | Red           |            |        |        |      |       |      |              |     |           |
| L-4-18-8/0-L        |            | Black         |            |        |        |      |       |      |              |     |           |
| L-4-18-8/4-L        |            | Yellow        |            |        |        |      |       |      |              |     |           |
| L-4-18-8/7-L        |            | Purple        |            |        |        |      |       |      |              |     |           |

Also available in bulk packages of 1,000.  
 Use QC-100, L-200, L-400-C, or ERG50 Installation Tools.  
 Consult your Regional Sales Office for availability and colours.