

2015

Contractor
 Cash Back
 Program



Earn \$1 to \$3 on great
 Hubbell products!

Great Price **PLUS** Cash Back

CASH BACK



Value, Performance & Service on Lighting Solutions!

ExpressLine

by Hubbell Lighting

Earn \$1 to \$3 **CASH BACK** on Hubbell Lighting **ExpressLine** products. Use this brochure as a quick-reference guide to **ExpressLine** products and earn extra cash while selecting quality Hubbell Lighting products. So, think **ExpressLine** when you need quality, service and support to light your next job right the first time! **ExpressLine** is just one part of the complete lighting package offered by the one company with many distinct brands – Hubbell Lighting, Inc.

Look for the **NEW** logo highlighting the latest LED products. With an expanding offering of LED wallpacks, floodlights, life safety and recessed downlight products, customers can maximize their energy savings and reduce maintenance costs.



*Select products include full color packaging

The **ExpressLine** program products are compact, energy efficient, and simple to install. This includes high-value, Hubbell-engineered: floods, lampholders, motion sensors, refractor and full cut-off wallpacks, vandal resistant wall/ceiling squares, dusk-to-dawn pole mounted fixtures and for interior applications, LED highbay and lowbay luminaires, downlights and life safety products.

**HUBBELL**
Outdoor Lighting**HUBBELL**
Industrial Lightingprescolite
ABOVE AND BEYONDCOMPASS
Life Safety Products by Hubbell Lighting Inc.

Contents

FLOODLIGHTING	LED FLOODLIGHTING	4
	HID FLOODLIGHTING.....	6
	WORKLIGHTS.....	8
	MOTION SENSORS.....	9
CONTROLS	PHOTOCONTROLS.....	9
WALLPACKS	LED ZERO UPLIGHT WALLPACKS.....	10
	LED REFRACTOR WALLPACKS	10
	HID ZERO UPLIGHT WALLPACKS.....	12
	HID REFRACTOR WALLPACKS.....	13
CEILING/SURFACE	LED CEILING/SURFACE.....	16
	HID CEILING/SURFACE	16
CANOPY	HID CANOPY	18
SECURITY	LED DUSK-TO-DAWN.....	18
	HID DUSK-TO-DAWN	19
VAPORTITES	VAPORTITES.....	19
LANDSCAPE	LANDSCAPE (12V LED).....	20
	WALKWAY & PATH (120V)	22
	LAMP HOLDERS	22
HIGHBAY/LOWBAYS INDUSTRIAL VAPORTITES	LED Highbay Industrial.....	23
	HID Highbay/Low Bay.....	24
	Industrial Vaportites	24
DOWNLIGHTING	LED DOWNLIGHTING.....	25
LIFE SAFETY	EXIT SIGNS/EMERGENCY LIGHTING.....	26



Compact LED Flood

Compact, wide beam 7 LED floodlight with 2040 lumens, excellent for small floodlighting applications such as signs, façade, landscape accent, or small area illumination. The compact size allows the flood to be easily hidden or blend into the landscape environment. 5100 CCT.



Catalog Number

Cash Back

NEW

FSL-7 26.5w Compact LED flood, 120-277V **\$2**

FSL-7-PC1 26.5w Compact LED flood, PC, 120V **\$2**



LED Flood

Wide beam 14 LED floodlight with 4285 lumens. Rugged design with vented housing isolates LED module from driver maximizing product life and performance. 1/2" brass knuckle mount swivel, with adjustable pivot. Ideal for signs, facade, landscape accent or medium area illumination, easily hidden or blend into landscape environment. 5100 CCT.



Catalog Number

Cash Back

NEW

FML-14 53w LED flood, 120-277V **\$2**

FML-14-PC1 53w LED flood, PC, 120V **\$2**



Large LED Flood

28 LED floodlight with wide beam NEMA 6x6 distribution for lighting applications such as safety/security, facade, area, or signs. Vented housing isolates LED module from driver, maximizing product life and performance.



Catalog Number

Cash Back

NEW

FLL-28L 100w LED flood, 120-277V **\$3**



X-Large LED Flood

56 LED floodlight with wide beam NEMA 6x6 distribution for lighting applications such as safety/security, facade, area, or signs. Vented housing isolates LED module from driver, maximizing product life and performance.



Catalog Number

Cash Back

NEW

FXL-56L 200w LED flood, 120-277V **\$3**



Miniliter® LED Flood

Hubbell Outdoor Lighting's proven Miniliter® MHS design is now available in LED. The LED flood features multiple beam patterns and color temperatures, two mounting options, a rugged design and the highest energy efficiency to solve your floodlighting needs.

Series Number	(consult catalog for complete ordering info)	Cash Back
MHS-X-30LU-3K-N	71w LED flood, 3K, Narrow, 120-277V	\$2
MHS-X-30LU-3K-M	71w LED flood, 3K, Medium, 120-277V	\$2
MHS-X-30LU-3K-RM	71w LED flood, 3K, Round/Medium, 120-277V	\$2
MHS-X-30LU-3K-W	71w LED flood, 3K, Wide, 120-277V	\$2
MHS-X-30LU-4K-N	71w LED flood, 4K, Narrow, 120-277V	\$2
MHS-X-30LU-4K-M	71w LED flood, 4K, Medium, 120-277V	\$2
MHS-X-30LU-4K-RM	71w LED flood, 4K, Round/Medium, 120-277V	\$2
MHS-X-30LU-4K-W	71w LED flood, 5K, Wide, 120-277V	\$2
MHS-X-30LU-5K-N	71w LED flood, 5K, Narrow, 120-277V	\$2
MHS-X-30LU-5K-M	71w LED flood, 5K, Medium, 120-277V	\$2
MHS-X-30LU-5K-RM	71w LED flood, 5K, Round/Medium, 120-277V	\$2
MHS-X-30LU-5K-W	71w LED flood, 5K, Wide, 120-277V	\$2



Miniliter® LED Flood

The MLED family is a large area LED floodlight designed to provide multiple NEMA distributions for best beam utilization on your application. Typical uses are area lighting for safety and security, build façade illumination, flag lighting, large sign or statuary accent.

Series Number	(consult catalog for complete ordering info)	Cash Back
MLED-80LU-W	176w LED flood, 5K, Wide, 120-277V	\$3
MLED-80LU-M	178w LED flood, 5K, Medium, 120-277V	\$3
MLED-80LU-N	179w LED flood, 5K, Narrow, 120-277V	\$3



ALF-6



ALF-12



ALFW-6LU

LED Facade Flood

Compact, wide beam, low profile LED floodlight. Rugged, weatherproof, with tempered glass and silicone gasket seal. Cast aluminum housing, 1/2" brass knuckle mount swivel, adjustable pivot from 0-75 degrees. Ideal for signs, facade, landscape accent, easily blends into landscape environment. ALFW 6 is available in versatile wallmount, all luminaires are 5100K.



Catalog Number		Cash Back
ALF-6LU-5K-BZ	10w LED, 120-277V	\$3
ALF-12LU-5K-BZ	22w LED, 120-277V	\$3
ALFW-6LU-5K-BZ	10w LED, 120-277V	\$3
ALFW-6LU-5K-BZ-PC	10w LED, 120V, photocontrol	\$3



Facade Flood

Compact, wide beam, with lamp, for close setback applications. UL listed for wet locations. Bronze finish.

Catalog Number		Cash Back
F-050H1	50w PS, 120V	\$3
F-070H1	70w PS, 120/208/240/277V	\$3
F-100H1	100w PS, 120/208/240/277V	\$3
F-070S1	70w HPS, 120V	\$2
F-150S1	150w HPS, 120V	\$2
F-042F8	42w CFL, 120-277V	\$2



Microliter® Floodlight

Medium beam flood, rotatable optics, with lamp. CSA certified to UL 1598 for wet locations. Bronze finish.

Catalog Number		Cash Back
MIC-0070S-651	70w HPS, 120V	\$3
MIC-0150S-651	150w HPS, 120V	\$2
MIC-0150S-258	100w PS, 120/208/240/277V	\$3
MIC-0070H-358	70w PS, 120/208/240/277V	\$3
MIC-0100H-358	100w PS, 120/208/240/277V	\$3
MIC-0150P-338	150w PS, 120/208/240/277V	\$3
MIC-0150P-358	150w PS, 120/208/240/277V	\$3



Miniliter® V Wide Flood

Wide beam, multiple watt size, tool-free entry, general-purpose flood, with lamp. CSA certified to UL 1598 for wet locations. Bronze finish.

Catalog Number		Cash Back
MHS-Y400P8	400w PS, yoke, 120/208/240/277V	\$3
MHS-Y400P5	400w PS, yoke, 480V	\$3
MHS-Y250P8	250w PS, yoke, 120/208/240/277V	\$3
MHS-Y150P8	150w PS, yoke, 120/208/240/277V	\$3
MHS-K400P8	400w PS, knuckle, 120/208/240/277V	\$3
MHS-K250P8	250w PS, knuckle, 120/208/240/277V	\$3
MHS-Y400S8	400w HPS, yoke, 120/208/240/277V	\$3
MHS-Y400S5	400w HPS, yoke, 480V	\$3
MHS-Y250S8	250w HPS, yoke, 120/208/240/277V	\$3
MHS-Y150S8	150w HPS, yoke, 120/208/240/277V	\$3



Magnuliter® MH Series Floods

Horizontal lamp position featuring medium or narrow beam distributions, up to 400w available. Bronze finish.

Catalog Number

Cash Back

Trunnion Mount

MHP-0400P-338	400w PS, 120/208/240/277V	\$3
MHP-0400P-368	400w PS, 120/208/240/277V	\$2
MHP-0400S-238	400w HPS, 120/208/240/277V	\$3
MHP-0400S-268	400w HPS, 120/208/240/277V	\$3

Slipfitter Mount

MHK-0400P-338	400w PS, 120/208/240/277V	\$3
MHK-0400P-368	400w PS, 120/208/240/277V	\$2
MHK-0400S-238	400w HPS, 120/208/240/277V	\$3
MHK-0400S-268	400w HPS, 120/208/240/277V	\$3



Magnuliter® MV Series Floods

Vertical lamp position featuring wide uniform beam distributions, up to 1000w available. Bronze finish.

Catalog Number

Cash Back

Trunnion Mount

MVM-HPS-SEA2	HPS, Less Ballast	\$3
MVM-0250P-268	250w PS, 120/208/240/277V	\$2
MVM-0400P-268	400w PS, 120/208/240/277V	\$3
MVM-1000S-268	1000w HPS, 120/208/240/277V	\$3
MVM-0250S-268	250w HPS, 120/208/240/277V	\$2
MVM-0400S-268	400w HPS, 120/208/240/277V	\$3

Slipfitter Mount

MVK-0250P-268	250w PS, 120/208/240/277V	\$3
MVK-0400P-268	400w PS, 120/208/240/277V	\$2
MVK-1000H-268	1000w HPS, 120/208/240/277V	\$3
MVK-0250S-268	250w HPS, 120/208/240/277V	\$3
MVK-0400S-268	400w HPS, 120/208/240/277V	\$3



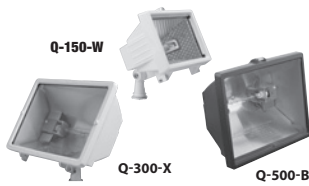
Quartzlitter® QL Series Floods

Industrial/ commercial grade quartz floodlights, up to 1500w available. Gray or bronze finishes.

Catalog Number

Cash Back

QL-1505	1000w/1500w, gray	\$3
QL-505	300w/500w, gray	\$3
QL-505-BZ	300w/500w, bronze	\$3



Quartz Floodlights

Low cost, white light, bronze or white finishes, with lamp. UL listed for wet locations.

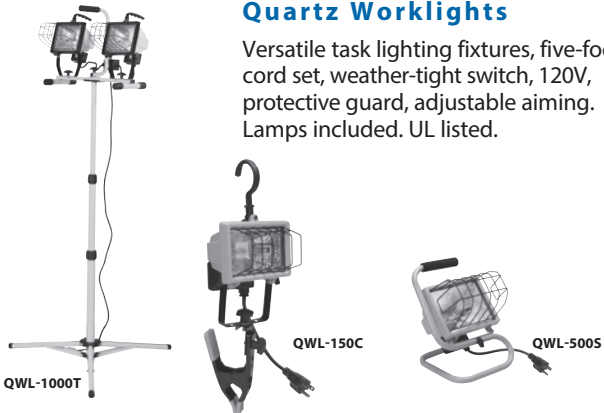
Catalog Number

Cash Back

Q-150-B	150w, 120V, bronze	\$1
Q-150-W	150w, 120V, white	\$1
Q-300-B	300w, 120V, bronze	\$1
Q-300-W	300w, 120V, white	\$1
Q-500-B	500w, 120V, bronze	\$1
Q-500-W	500w, 120V, white	\$1

Quartz Worklights

Versatile task lighting fixtures, five-foot cord set, weather-tight switch, 120V, protective guard, adjustable aiming. Lamps included. UL listed.



Catalog Number

Cash Back

QWL-150C	150w clamp mount	\$1
QWL-500S*	300/500w hand stand mounting	\$1
QWL-1000T	2x500w tripod 2 in 1	\$2

* Supplied with a 500 and 300w lamp for twice the life and brightness choice.



Quartz Motion Sensors

Attractive security floodlight set. Powerful 75w G8 quartz floods controlled by 130° motion sensor so you save energy – lights only when you need it!

Catalog Number

Cash Back

R2LHQ	Sensor, twin 75w quartz decorative lampholders and coverplate, bronze, lamps included	\$1
R2LHQ-W	Sensor, twin 75w quartz decorative lampholders and coverplate, white, lamps included	\$1



Motion Sensors

Motion Sensors for security and welcome lighting. S Series units have wide 270° field and kits have aluminum lampholders and cover. Center focal range is 50-75 feet. M Series has 130° detection field, 40 foot center range and non-metallic lampholders and cover. Sensors have 1/2" knuckle mount, adjustable time-on and sensitivity controls. Bronze or white finishes. UL listed for wet locations.

Catalog Number		Cash Back
SO	Sensor only, 1500w INC capacity, 120V, bronze	\$1
SO-W	Sensor only, 1500w INC capacity, 120V, white	\$1
S2LH-W	Sensor, twin 150w lampholders, coverplate, white	\$1
MO	Sensor only, 500w INC capacity, 120V, bronze	\$1
MO-W	Sensor only, 500w INC capacity, 120V, white	\$1
M2LH	Sensor, twin 150w lampholders, coverplate, bronze	\$1



Photocontrols, Receptacles & Shorting Cap

1/2" thread mount, twist-lock style and Twist-Lock® shorting cap. Use in any suitable enclosed box or luminaire; A gasket and lock nut provide weather tight seal at exit point (non-thread mount only).

Catalog Number		Cash Back
PBT-1	Photocontrol, 120V, button type	\$1
PBT-234	Photocontrol, 208/240/277V, button type	\$1
PTA-1	Photocontrol, 120V, button type	\$1
PTA-8	Photocontrol, 120-277V, button type	\$1
PBT-5	Photocontrol, 480V, button type	\$1
PTL-1	Photocontrol, 120V, Twist-lock®	\$1
PTL-8	Photocontrol, 120-277V, Twist-lock®	\$1
PTL-5	Photocontrol, 480V, Twist-lock®	\$1
PTL-6	Photocontrol, 347V, Twist-lock®	\$1
PRR	Photocontrol, 120-480V, Twist-lock®	\$1
PSC	Shorting Cap, Twist-lock®	\$1



LNC-5L



LNC-7L



LNC-9L

LNC LED Perimeter Wallpack-Zero Uplight

The compact Laredo LED LNC is designed for perimeter illumination, available in three lumen packages (967, 1389, and 1745) for safety, security and identity. Typical mounting height is up to 12 feet with four times fixture spacing (without acrylic diffuser) and three times spacing with acrylic diffuser installed. 5100K CCT.



Catalog Number (consult catalog for complete ordering info) **Cash Back**

LNC-5LU-5K	13w LED, 120-277V, bronze	\$2
LNC-5LU-5K-PC	13w LED, 120V, PC, bronze	\$2
LNC-7LU-5K-3-1	16w LED, 120-277V, bronze	\$2
LNC-9LU-5K-3-1	20w LED, 120-277V, bronze	\$2



LNC2-12L



LNC2-18L

LNC2 LED Perimeter Wallpack - Zero Uplight

The compact Laredo LED LNC2 wallpack is larger more powerful version of the LNC wallpacks. Up to 5:1 spacing to mounting height ratio means fewer fixtures to install. Rugged die-cast aluminum housing, optional acrylic diffuser included for reduced brightness applications. Ideal for schools, factories, hospitals, warehouses and retail applications.

Listed to UL1598 for use in wet locations, IDA compliant, DLC and LightingFacts. 2419 & 3,311 lumens, 5100K CCT.



Catalog Number (consult catalog for complete ordering info) **Cash Back**

LNC2-12LU-5K-3-1	29w LED, 120-277V, bronze	\$2
LNC2-12LU-5K-3-1-PC	29w LED, 120-277V, photocontrol, bronze	\$2
LNC2-18LU-5K-3-1	45w LED, 120-277V, bronze	\$2
LNC2-18LU-5K-3-1-PC	45w LED, 120-277V, photocontrol, bronze	\$2



NRG312LU

LED Perimeter Wallpack

Energy-efficient LED, features one-piece polycarbonate front, vandal proof construction, dark bronze architectural finish. Photocontrol available, 120V only. Entry or single story perimeter lighting for safety, security and identity. Ideal for commercial buildings, shopping centers, schools, apartment complexes as well as non-supervised vandal prone applications. 5000K CCT.



Catalog Number **Cash Back**

NRG310LU	10w LED, 120-277V, bronze	\$2
NRG310LU-PC	10w LED, 120V, PC, bronze	\$2
NRG-312LU-5K-BZ	18w LED, 120-277V, bronze	\$2
NRG-312LU-5K-BZ-PC	18w LED, 120V, PC, bronze	\$2



Mid-size Refractor Wallpack

Glass refractor, conduit hubs, 12'-15' mounting height, bronze, with lamp.
UL wet location listed.

Catalog Number

Cash Back

NEW

WGH-1LU-M

41w LED, glass refractor, 4K
120-277V, bronze

\$3

NEW

WGH-110L-4K-U-M

53w LED, glass refractor, 4K
120-277V, bronze

\$3



Large Refractor Wallpack

Low profile design, mounting heights 15'-25',
conduit hubs, bronze, lamp included.
UL wet location listed.

Catalog Number

Cash Back

NEW

WGH-225L-4K-U-L

97w LED, glass refractor, 4K
120-277V, bronze

\$3



PGM3



PVL3

LED Perimaliter® Wallpacks

Rugged, durable LED wallpack ideal for
perimeter/area lighting featuring wide
lateral spacing, vandal resistant glass or
polycarbonate lens, Dark Bronze finish.
Ideal for factories, warehouses, distribution
centers, parking structures and large retail
applications. Listed to UL1598 for use in
wet locations.



Catalog Number (consult catalog for complete ordering info) **Cash Back**

PGM3-30LU-5K-BZ

69w LED, glass refractor,
120-277V, bronze

\$3

PVL3-30LU-5K-BZ

69w LED, acrylic refractor,
120-277V, bronze

\$3



Euroluxe® Decorative Wall/ Ceiling Luminaire

LED wall/ceiling/surface luminaire used for
wall or ceiling applications at entrances,
stairs, corridors or single story building
accents.

Catalog Number

Cash Back

BRLU-01

15w LED, glass refractor,
120-277V, bronze

\$3

BRLU-04

15w LED, acrylic refractor,
120-277V, white

\$3



Eurolux® Decorative Wall/ Ceiling Luminaire

Incandescent, HPS or CFL wall/ceiling/
surface luminaire used for wall or ceiling
applications at entrances, stairs, corridors
or single story building accents available in
round or oval shapes.

Catalog Number		Cash Back
BRI-01	Incandescent 100w, round, 120V, bronze	\$2
BRI-02	Incandescent 100w, round, 120V, black	\$2
BRI-04	Incandescent 100w, round, 120V, white	\$2
BOI-01	Incandescent 100w, oval, 120V, bronze	\$2
BOI-02	Incandescent 100w, oval, 120V, black	\$2
BOI-04	Incandescent 100w, oval, 120V, white	\$2
BRS-01	HPS 50w, round, 120V, bronze	\$2
BRS-02	HPS 50w, round, 120V, black	\$2
BRS-04	HPS 50w, round, 120V,, white	\$2
BOS-01	HPS 50w, oval, 120V, bronze	\$2
BOS-02	HPS 50w, oval, 120V, black	\$2
BOS-04	HPS 50w, oval, 120V, white	\$2
BRF-01	CFL 28w, round, 120V, bronze	\$2
BRF-02	CFL 28w, round, 120V, black	\$2
BRF-04	CFL 28w, round, 120V, white	\$2
BOF-01	CFL 28w, oval, 120V, bronze	\$2
BOF-02	CFL 28w, oval, 120V, black	\$2
BOF-04	CFL 28w, oval, 120V, white	\$2



WMR/WMS Full Cut-Off Compact Wall Sconces

Accent wall sconces for mounting heights
of 8-12 ft. Shipped as full cut-off downlight
Units have a removable internal shield that
allows up/down distribution.



Catalog Number		Cash Back
WMR-42F1-PC	CFL 42w, radius, 120V, PC, bronze	\$2
WMR-70P6	PSMH 70w, radius, 120V, 277V, 347V, bronze	\$2
WMS-213F1-PC	CFL 2x13w, soft rectangle, 120V, PC, bronze	\$2
WMS-42F1-PC	CFL 42w, soft rectangle, 120V, PC, bronze	\$2
WMS-70P6	PSMH 70w, soft rectangle, 120V, 277V, 347V, bronze	\$2



Full Cut-off Wallpacks

Dark Sky friendly, no uplight, no
glare, mounting heights from
8'-15', conduit hub, bronze, with
lamp. UL wet location listed.



Catalog Number		Cash Back
WGC-50H	50w PS, 120, 277V	\$3
WGC-70H	70w PS, 120/208/240/277V	\$3
WGC-100H	100w PS, 120/208/240/277V	\$3
WGC-100S	100w HPS, 120/208/240/277V	\$3
WGC-42F	42w CFL, 120/208/240/277V	\$3



Full Cut-off Compact Wallpack

Dark Sky friendly, decorative styling with rugged, one-piece polycarbonate front that resists rocks and other small projectiles. No uplight, energy saving. Use for wall perimeter or entry at mounting heights of 8'-12'. CSA certified to UL 1598 for wet locations.

Catalog Number

Cash Back

NRG-1111-B	100w PS, 120/277/347V, bronze	\$3
NRG-1111-W	100w PS, 120/277/347V, white	\$3
NRG-1171-B	70w PS, 120/277/347V, bronze	\$3
NRG-1171-W	70w PS, 120/277/347V, white	\$3
NRG-1112-B	100w HPS, 120/277/347V, bronze	\$3
NRG-1112-W	100w HPS, 120/277/347V, white	\$3
NRG-1172-W	70w HPS, 120/277/347V, white	\$3
NRG-1143-W	42w CFL, 120-277V 60/50hz, white	\$3



Shielded Wallpacks Full Cut-off

Dark Sky friendly, no uplight, no glare, mounting heights from 8'-15', conduit hub, bronze, with lamp. UL wet location listed.

Catalog Number

Cash Back

NRG-311	50w HPS, 120, 277V	\$3
NRG-317	70w HPS, 120, 277V	\$3
NRG-315	50w PSMH, 120, 277V	\$3



Perimaliter® Wallpacks

Rugged, durable acrylic HID wallpacks ideal for perimeter/area lighting featuring wide lateral spacing, vandal resistant glass or polycarbonate lens, Dark Bronze finish. Ideal for factories, warehouses, distribution centers, parking structures and large retail applications. Listed to UL1598 for use in wet locations.

Catalog Number

Cash Back

PVL3-70P-18-BZ-L	70w PSMH, 120/208/240/277V, lamp	\$3
PVL3-100P-18-BZ-L	100w PSMH, 120/208/240/277V, lamp	\$3
PVL3-150P-18-BZ	150w PSMH, 120/208/240/277V	\$3
PVL3-150P-18-BZ-L	150w PSMH, 120/208/240/277V, lamp	\$3
PVL3-70S-18-BZ-L	70w HPS, 120/208/240/277V, lamp	\$3
PVL3-100S-18-BZ	100w HPS, 120/208/240/277V	\$3
PVL3-100S-18-BZ-L	150w HPS, 120/208/240/277V, lamp	\$3
PVL3-150S-18-BZ-L	150w HPS, 120/208/240/277V, lamp	\$3
PVL3-150S-51-BZ-L	150w HPS, 120V NPF, lamp	\$3
PVL3-242F-18-BZ-L	2x42w CFL, 120/208/240/277V, lamp	\$3
PVL3-242F-18-BZ-L-BOC	2x42w CFL, 120/208/240/277V Battery Backup	\$3



Perimaliter® Wallpacks

Rugged, durable glass refractor HID wallpacks ideal for perimeter/area lighting featuring wide lateral spacing, vandal resistant glass or polycarbonate lens, Dark Bronze finish. Ideal for factories, warehouses, distribution centers, parking structures and large retail applications. Listed to UL1598 for use in wet locations.

Catalog Number

Cash Back

PGM3-100P-18-BZ-L	100w PSMH, 120/208/240/277V, lamp	\$3
PGM3-150P-18-BZ	150w PSMH, 120/208/240/277V	\$3
PGM3-150P-18-BZ-L	150w PSMH, 120/208/240/277V, lamp	\$3
PGM3-150P-18-BZ	150w PSMH, 120/208/240/277V	\$3
PGM3-250P-18-BZ-L	250w PSMH, 120/208/240/277V, lamp	\$3
PGM3-070S-18-BZ	70w HPS, 120/208/240/277V	\$3
PGM3-100S-18-BZ	100w HPS, 120/208/240/277V	\$3
PGM3-150S-18-BZ	150w HPS, 120/208/240/277V	\$3
PGM3-150S-18-BZ-L	150w HPS, 120/208/240/277V, lamp	\$3
PGM3-250S-18-BZ	250w HPS, 120/208/240/277V	\$3
PGM3-250S-18-BZ-L	250w HPS, 120/208/240/277V, lamp	\$3
PGM3-LB	250w Max, less ballast	



Perimaliter® Wallpacks

Rugged, durable glass refractor vertical lamp HID wallpacks ideal for perimeter/area lighting featuring wide lateral spacing, vandal resistant glass or polycarbonate lens, Dark Bronze finish. Ideal for factories, warehouses, distribution centers, parking structures and large retail applications. Listed to UL1598 for use in wet locations.

Catalog Number

Cash Back

PGL3-250P-128-1-LP	250w PSMH, 120/208/240/277V, lamp	\$3
PGL3-320P-128-1	320w PSMH, 120/208/240/277V	\$3
PGL3-350P-128-1	350w PSMH, 120/208/240/277V	\$3
PGL3-350P-128-1-LP	350w PSMH, 120/208/240/277V, lamp	\$3
PGL3-250S-128-1	250w HPS, 120/208/240/277V	\$3
PGL3-400S-128-1	400w HPS, 120/208/240/277V	\$3
PGL3-400S-128-1-LP	400w HPS, 120/208/240/277V, lamp	\$3



Compact Refractor Wallpack

Approximate 9" cube, lamp included, rear and side conduit hubs, 8'-12' mounting height, glass and polycarbonate refractors, bronze. UL wet location listed.

Catalog Number

Cash Back

WGH-70H	70w PS, 120/208/240/277V, glass refractor	\$3
WGH-100H	100w PS, 120/208/240/277V, glass refractor	\$3
WPH-70S	70w HPS, 120V, polycarbonate refractor	\$2
WPH-100S	100w HPS, 120V, polycarbonate refractor	\$2



Mid-size Refractor Wallpack

Glass refractor, conduit hubs, 12'-15' mounting height, bronze, with lamp.
UL wet location listed.

Catalog Number

Cash Back

WGH-150S	150w HPS, 120/208/240/277V	\$3
WGH-150S120	150w HPS, 120V	\$2
WGH-150P	150w PS, 120/208/240/277V	\$3



Large Refractor Wallpack

Low profile design, mounting heights 15'-25', conduit hubs, bronze, lamp included.
UL wet location listed.

Catalog Number

Cash Back

WGH-250S	250w HPS, 120/208/240/277V	\$3
WGH-400S	400w HPS, 120/208/240/277V	\$3
WGH-250P	250w PS, 120/208/240/277V	\$3
WGH-400P	400w PS, 120/208/240/277V	\$3



NRG207B



NRG204B-MS

Decorative Perimeter Wallpack

Decorative vandal resistant wallpack for 6-10ft mounting heights. Curved polycarbonate face. PC units provide 120V dusk-to-dawn automatic cutoff for energy savings. Motion sensor option.

Catalog Number

Cash Back

NRG250B	50w PS, 120V, bronze	\$2
NRG250B-PC	50w PS, 120V, PC, bronze	\$2
NRG204B	42w CFL, 120-277V, bronze	\$2
NRG204B-PC	42w CFL, 120V, PC, bronze	\$2
NRG204B-MS	42w CFL, 120V, motion sensor, bronze	\$2
NRG206B-PC	26w CFL, 120V, PC, bronze	\$2



NRG301B



NRG304B-MS

Perimeter Wallpack

Polycarbonate front provides wide lateral spread and vandal resistance. Lateral coverage is five times the typical 6-10' mounting height. New energy-saving LED and HID units are available in bronze finish, white available on CFL-PC units. Photocontrol units provide dusk-to-dawn energy management. New motion sensing unit saves energy – illuminates only when needed.

Catalog Number		Cash Back
NRG-301B	50w HPS, 120V, bronze	\$2
NRG-301B-PC	50w HPS, 120V, PC, lamp, bronze	\$2
NRG-307B	70w HPS, 120V, bronze	\$2
NRG-307B-PC	70w HPS, 120V, PC, lamp, bronze	\$2
NRG-350B	50w PS, 120V, bronze	\$2
NRG-350B-PC	50w PS, 120V, PC, lamp, bronze	\$2
NRG-304B	42w CFL, 120/208/240/277V, bronze	\$2
NRG-304B-PC	42w CFL, 120V, PC, lamp, bronze	\$2
NRG-304B-PC-W	42w CFL, 120V, PC, lamp, white	\$2
NRG304B-MS	42w CFL, 120V motion sensor, bronze	\$2
NRG-306B-PC	26w CFL, 120V, PC, lamp, bronze	\$2
NRG-306B-PC-W	26w CFL, 120V, PC, lamp, white	\$2



GSL Series LED

Designed for a range of ceiling applications from eight to fifteen feet for junction box or pendant mount; Parking garage, walkway or building canopies, corridors, tunnels, large stairwells and other cover applications; Two lumen packages and two optical distributions make the the GSL Series luminaire both versatile and functional.



Catalog Number		Cash Back
GSL-15L	53w LED ceiling/surface/garage, 120-277V	\$3
GSL-21L	74w LED ceiling/surface/garage, 120-277V	\$3

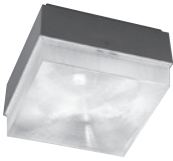


NRG® 4000 Series LED

Designed for illumination of commercial indoor/outdoor lowbay applications including: mechanical rooms, retail, covered loading docks and utility areas. Bronze finish.



Catalog Number		Cash Back
NRG4-30LU-4K-035-BZ	35w LED, 4K, 120-277V	\$3
NRG4-30LU-5K-035-BZ	35w LED, 5K, 120-277V	\$3
NRG4-30LU-5K-BZ	70w LED, 5K, 120-277V	\$3



NRG® 400 Series

HPS and CFL luminaire designed for illumination of commercial indoor/outdoor lowbay applications including: mechanical rooms, retail, covered loading docks and utility areas. Bronze finish.

Catalog Number

NRG-401	50w HPS, 120V
NRG-406-2	2x13w CFL, 120V
NRG-456	2x28w CFL, 120V

Cash Back

\$2
\$2
\$2



NRG® 4000 Series

HPS and CFL luminaire designed for illumination of commercial indoor/outdoor lowbay applications including: mechanical rooms, retail, covered loading docks and utility areas. Bronze finish except where noted.

Catalog Number

NRG-413S8	100w HPS, 120V-277V
NRG-414S8	150w HPS, 120V-277V
NRG-413P8	100w PSMH, 120V-277V
NRG-413P8-WH	100w PSMH, 120V-277V, white
NRG-415P8	150w PSMH, 120V-277V
NRG-415P8-WH	150w PSMH, 120V-277V, white
NRG-484F8	2x42w CFL, 120V-277V

Cash Back

\$2
\$2
\$2
\$2
\$2
\$2
\$2



R12-HID



R9-42F



R9-HID

Ceiling/Surface Rounds

Compact sizes in round polycarbonate refractors, tamper resistant hardware, typical mounting heights 8'-15', conduit hubs on HID units, with lamp. UL listed for wet locations. Bronze finish for HID units.

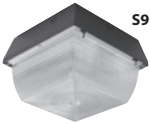
Catalog Number

Compact 11" Diameter	
R9-42F	42w CFL, 120/208/240/277V
R9-70H	70w PSMH, 120/208/240/277V
R9-70S	70w HPS, 120/208/240/277V
Compact 15" Diameter	
R12-100H	100w PSMH, 120/208/240/277V

Cash Back

\$2
\$2
\$2
\$2

Ceiling/Surface Squares



S9-HID



S12-HID



S9-42F

Compact sizes, polycarbonate refractors, tamper resistant hardware, typical mounting heights 8'-15', conduit hubs on HID units, with lamp. UL listed for wet locations.

Catalog Number

Cash Back

Compact 9" Square

S9-70H	70w PS, 120/208/240/277V, bronze	\$2
S9-42F	42w CFL, 120/208/240/277V, bronze	\$2

Catalog Number

Cash Back

Compact 12" Square

S12-100H	100w PS, 120/208/240/277V, bronze	\$3
S12-150P	150w PS, 120/208/240/277V, bronze	\$3



DDL-9L1



DDL-56L-4K-1-NA



DDL-140L-1

Multipurpose LED Dusk-To-Dawn

Energy-efficient LED multipurpose dusk-to-dawn luminaire for security and large area illumination. Symmetric lens and asymmetric lenses included, some models include removable refractor for environmentally friendly installations. Versatile mounting options: curved 24" aluminum arm, adjustable clamp for 2-3/8" & 1-5/8" OD poles, or direct wall mount.



Catalog Number

Cash Back

DDL-9L1	24" aluminum arm mount or wall, acrylic refractor, 40w LED, 120V, PC	\$2
DDL-56L-4K-1-NA	Wall mount, 30w LED, 120V, PC	\$2
DDL-140L-1	24" aluminum arm mount or wall, 43.5w LED, 120V, PC	\$2

NEW

Dusk-To-Dawn

Long life, security light design, wall or pole mount, refractor design, complete kit includes lamp. UL listed for wet locations.



Catalog Number	Cash Back
DDS-70S 24" aluminum arm mount, screw-on 12" optic, acrylic refractor, 70w HPS, 120V, PC, lamp	\$2
DDS-100S Same as above except 100w HPS	\$2
DDS-150S Same as above except 150w HPS	\$2
DDS-100P Same as above except 100w Pulse Start	\$2
DDS-100PL 100w Pulse Start, w/latches	\$2
DDS-65F Same as above except 65w CFL	\$1
DDR-100S Utility kit, 60" leads, 100w HPS	\$2
DDR-150S Utility kit, 60" leads, 150w HPS	\$2

LED Vaportites



Rugged die-cast aluminum construction, frosted globe with guard, wet location listed, energy-efficient LED vaportites for ceiling/pendant/wall mount. Use for entry, corridors, tunnels, service passages, stairwells. Gray powder paint finish. 757 lumens, 4000 CCT.



NEW

Catalog Number	Cash Back
VBGL-1 Wet location LED ceiling/surface/pendant	\$2
VWGL-1 Wet location LED wall mount	\$2

Vaportites



Rugged die cast aluminum, clear globe and guard, wet location listed vaportites for ceiling or pendant and wall mount. Lamps not included. UL wet location listed. Natural aluminum finish.

Catalog Number	Cash Back
VBGG-150 Box/Pendant, 150w max, 120V	\$1
VBGG-300 Box/Pendant, 300w max, 120V	\$1
VWGG-150 Wall Mount with box, 150w max, 120V	\$1



Greenville

A stately appearance with classic shape. Stands 17" tall with 5" diameter head. Frosted glass lens provides soft lighting of taller surrounding plantings with 5' coverage. Use along walkways, steps. Typical spacing 8'-12'.

Catalog Number

GN-AB

Greenville 1.5w LED, antique bronze

Cash Back

\$1

GN-PT

Greenville 1.5w LED, platinum silver

\$1



Seashell

Large seashell with adjustable knuckle. Use as full cut-off or tilt up (45° max.) for larger area coverage. A powerful and flexible luminaire for lighting large flower beds or plantings around building perimeters.

Catalog Number

SS-AB

Seashell 1.5w LED, antique bronze

Cash Back

\$1

SS-AG

Seashell 1.5w LED, antique green

\$1



Cone

Create a tropical image. The basic 7" diameter cone shape sits 16" high and creates a 5' lighted area with soft, indirect shielded light. Excellent for subtle illumination of plants or walkways.

Catalog Number

CO-AB

Cone 1.5w LED, antique bronze

Cash Back

\$1

CO-AG

Cone 1.5w LED, antique green

\$1



Reidville

Bell-shaped head supported by decorative arm and sturdy staff. Full cutoff pattern provides 5' pool of light on ground with no glare. Perfect for high-lighting walkways, flowers and plants. Typical spacing 8'-10'.

Catalog Number

RD-AB

Reidville 1.5w LED, antique bronze

Cash Back

\$1



Flood

Powerful 3w LED projection flood with adjustable knuckle for versatile aiming. Use for accent lighting of building facades, small signs or address numbers, columns, trees and residential flags to 20' height.

Catalog Number

FL-AB Flood 3w LED, antique bronze

Cash Back

\$1



Eyelid

Round 4" diameter eyelid for deck post or steplighting. Can be surface mounted or semi-recessed. Use for accent or small area illumination of perimeters or stairways. 2' mounting height provides soft coverage 5'w, 2'forward.

Catalog Number

EL-AB Eyelid 1.5w LED, antique bronze
EL-PT Eyelid 1.5w LED, platinum silver

Cash Back

\$1
\$1



Recessed

Round recessed uplight for accent lighting of trees, columns and building facades. Powerful 3w LED projection beam. Provides hidden light source.

Catalog Number

RE-PT Recessed 3w LED, pewter

Cash Back

\$1



Transformer & Wiring

Non-metallic case protects timer controls and 120V-to-12V transformer. Surge protected with grounded cord/plug set and easy 12V cable attachment. Photo-control triggers "time-on", eliminating seasonal adjustment. UL and c-UL certified (Controls 15 3w or 30 1.5w fixtures)



Low voltage #14 cable runs from LVT56 control center down path of lighting. UV protected, burial is not required, hide with mulch if desired. Perfect fit with fixture connectors for easy installation.

Catalog Number

LVT56 56w low voltage transformer with PC
CB-75 75' 14 gauge low energy cable
CB-150 150' 14 gauge low energy cable

Cash Back

\$1
\$1
\$1

Accessories included with fixtures



Stake

8" black die-cast aluminum stake with set screw and epoxy outer coating.



Flat Surface Connector

Each stake mounted fixture includes flat surface mount with two phillips head screws. Allows mounting to deck, steps or wood walkway.



"Smart Connect"

Easy to install tool-free connector allows flexibility of fixture layouts. Select a central location and attach smart connector to main 12V cable with 4 ft. fixture cable. As plants and vegetation grow, fixture can be moved within an 8' diameter from existing connection.



120V Louverlight

Use for landscape lighting in flower beds, along paths, sidewalks and steps. Accent and safety illumination.

Catalog Number

583-G

Three louvers; Green finish; 60w inc max.

Cash Back

\$1



Lampholders

103 full size lampholders, silicone gasket, 150w max. 103-7 feature shielded lampholder with "bell" shape, 150w max. 306 die-cast housing, glass lense, up to 300w incandescent and 500w quartz.

Catalog Number

103

Unshielded, full size, natural aluminum

\$1

103-7

Shielded, bell shape, gray

\$1

103-71

Shielded, bell shape, bronze

\$1

103-72

Shielded, bell shape, black

\$1

103-73

Shielded, bell shape, green

\$1

103-74

Shielded, bell shape, white

\$1

306

1/2" swivel knuckle mount, gray

\$1

309
SERIES

Lampholders

Three styles for use with PAR38 or smaller lamps, wet location design. CSA certified or UL listed for wet locations.

Catalog Number

Cash Back

308-13-M	Aim Down only, 150w max, 120V, garden green	\$1
309-ML	Deep shielded, 150w max, 120V, gray	\$1
309-13-ML	Deep shielded, 150w max, 120V, garden green	\$1
309-14-ML	Deep shielded, 150w max, 120V, matte black	\$1
309-VG-ML	Deep shielded, 150w max, 120V, verdi	\$1
309-M51-ML	Deep shielded, 150w max, 120V, bronze	\$1
309-M54-ML	Deep shielded, 150w max, 120V, white	\$1
30910LEDML	LED, 15w, 120V, bronze	\$1



HID Bullet Lights

Provide accent illumination for facade, columns, trees, flags and other vertical targets. Black bullet lampholders mounted on non-metallic burial ballast box. Fixtures capable for PAR38 or BR40 shape lamps.

Catalog Number

Cash Back

309-8P	100w max, 120V/277V, black	\$1
309-7P	70w max, 120V/277V/347V, black	\$1



LED Highbay Severe Location

The LED Highbay Series is designed to efficiently light any large interior space with its high performance LED design and delivery of up to 100 lumens per watt of 5000K light. White finish.

Catalog Number (consult catalog for complete ordering info)

Cash Back

HBL-48LU-5K-N-070-WH	112w 48 LED, narrow, 120V-277V	\$3
HBL-48LU-5K-W-070-WH	112w 48 LED, wide, 120V-277V	\$3
HBL-48LU-5K-A-070-WH	112w 48 LED, aisle, 120V-277V	\$3
HBL-60LU-5K-N-070-WH	112w 60 LED, narrow, 120V-277V	\$3
HBL-60LU-5K-W-070-WH	112w 60 LED, wide, 120V-277V	\$3
HBL-60LU-5K-A-070-WH	112w 60 LED, aisle, 120V-277V	\$3
HBL-72LU-5K-N-070-WH	112w 72 LED, narrow, 120V-277V	\$3
HBL-72LU-5K-W-070-WH	112w 72 LED, wide, 120V-277V	\$3
HBL-72LU-5K-A-070-WH	112w 72 LED, aisle, 120V-277V	\$3



BL-400PHB



BL-400PLB

Industrial Highbay/Lowbay

Cast aluminum housing, quality optics with lensed bottom, 3/4" mounting with safety hook and lamp included. Standard and quartz restrike units available. UL damp location listed. Powered by energy-saving Pulse Start. White finish on ballast housing.

Catalog Number

Cash Back

BL-400P-HB-EX Highbay, 400w PS, 120/208/240/277V **\$2**

BL-400P-HB-EX-Q Highbay, 400w PS, 120/208/240/277V **\$2**
w/ Quartz restrike

BL-400P-LB-EX Lowbay, 400w PS, 120/208/240/277V **\$2**

BL-400P-LB-EX-Q Lowbay, 400w PS, 120/208/240/277V **\$2**
w/ Quartz restrike

BL-400P-WL-EX Worklite, 400w PS, 120/208/240/277V **\$2**
with open rated lamp and guard



NV2 Enclosed and Gasketed

Typical applications include manufacturing plants, chemical and petrochemical processing facilities, sewage treatment plants, off-shore and dockside installations, agricultural, commercial, industrial, mining, and marine facilities

Catalog Number		Type	Cash Back
Standard Globe	Tempered Globe		
Pendant 3/4" Fixture with Clear Globe & Guard			
NV2IG15ASG	NV2IG15AHG	150w Incandescent	\$1
NV2FG13ASG	NV2FG13AHG	13w Fluorescent	\$1
NV2FG18ASG	NV2FG18AHG	18w Fluorescent	\$1
NV2FG26ASG	NV2FG26AHG	26w Fluorescent	\$1
NV2FG32ASG	NV2FG32AHG	32w Fluorescent	\$1
NV2FG42ASG	NV2FG42AHG	42w Fluorescent	\$1
Ceiling 3/4" Fixture with Clear Globe & Guard			
NV2IG15XSG	NV2IG15XHG	150w Incandescent	\$1
NV2FG13XSG	NV2FG13XHG	13w Fluorescent	\$1
NV2FG18XSG	NV2FG18XHG	18w Fluorescent	\$1
NV2FG26XSG	NV2FG26XHG	26w Fluorescent	\$1
NV2FG32XSG	NV2FG32XHG	32w Fluorescent	\$1
NV2FG42XSG	NV2FG42XHG	42w Fluorescent	\$1
Wall 3/4" Fixture with Clear Globe & Guard			
NV2IG15BSG	NV2IG15BHG	150w Incandescent	\$1
NV2FG13BSG	NV2FG13BHG	13w Fluorescent	\$1
NV2FG18BSG	NV2FG18BHG	18w Fluorescent	\$1
NV2FG26BSG	NV2FG26BHG	26w Fluorescent	\$1
NV2FG32BSG	NV2FG32BHG	32w Fluorescent	\$1
NV2FG42BSG	NV2FG42BHG	42w Fluorescent	\$1



LBSLEDA10L



LBSQLEDA10L

Surface Mount LED Downlights

Installs to standard 4x4 J-Box, retrofit applications with compatible 4", 5", or 6" housings using the optional mounting kit. The product offers excellent glare control, color quality and a warm white color temperature. Long life – up to 42,000 hours at 70% lumen maintenance. Energy Star qualified.

Catalog Number

Cash Back

NEW

LBSLEDA10L30K 9 WH Surface mount trim, Round, 120V \$2

LBSQLEDA10L30K 9 WH Surface mount trim, square, 120V \$2



6" LED QuickLink

6" LED QuickLink housing for trims. The product offers excellent glare control and optical cutoff, color quality and a warm white color temperature. Long life – up to 60,000 hours at 70% lumen maintenance. Energy Star qualified and meets California Title 24 (commercial).

Catalog Number

Cash Back

NEW

DBXQL 6" LED QuickLink housing

\$2



LED Recessed Downlight

Dimmable 4" and 6" LiteBox LED trims, residential and light commercial applications for both new construction and retrofitting opportunities. The product offers excellent glare control and optical cutoff, color quality and a warm white color temperature. Long life – up to 60,000 hours at 70% lumen maintenance. Energy Star qualified and meets California Title 24 (commercial).

Catalog Number

Cash Back

NEW

LB6LEDA8L30K WH 13.1w LED downlight, 825 lumens, 120V \$2

LB6LEDA10L30K WH 14w LED downlight, 1000 lumens, 120V \$3

LB4LED6L30K WH 10w LED downlight, 1000 lumens, 120V \$1



LED Combination Exit/Light

Combination Exit/Emergency light, Universal face, Red or Green letters, premium NiCad battery. Remote capacity available with Red or Green letters. Damp Location Listed on all fixtures. White or black housing

Note: Remote capacity exit, unit and combo will only power the CIR and COR series remotes.

Catalog Number		Cash Back
CCR	Universal face, red letters, white	\$1
CCRB	Universal face, red letters, black	\$1
CCG	Universal face, green letters, white	\$1
CCGB	Universal face, green letters, black	\$1
CCRRC	Universal face, red letters, remote remote capacity, white	\$1
CCRRCB	Universal face, red letters, remote remote capacity, black	\$1
CCGRC	Universal face, green letters, remote capacity	\$1



CCE Exit Series

Quality and value with a compact and attractive Thin Die-Cast aluminum Exit sign. Exit face illumination by low energy, long-life red or green ultra bright LED's. The Exit face-plate is brushed aluminum with black edges and 6" letters with a red or green diffuser.

Catalog Number		Cash Back
CCESRE	Brushed Face, Black Housing, Single-Face, Red, Emergency	\$1
CCEDRE	Brushed Face, Black Housing, Double-Face, Red, Emergency	\$1
CCESGE	Brushed Face, Black Housing, Single-Face, Green, Emergency	\$1
CCEDGE	Brushed Face, Black Housing, Double-Face, Green, Emergency	\$1
CCESR	Brushed Face, Black Housing, Single-Face, Red, AC Only	\$1
CCEDR	Brushed Face, Black Housing, Double-Face, Red, AC Only	\$1
CCESG	Brushed Face, Black Housing, Single-Face, Green, AC Only	\$1
CCEDG	Brushed Face, Black Housing, Double-Face, Green, AC Only	\$1



LED Emergency Exit

Universal face, Emergency Exit, Red or Green letters, Premium NiCad battery. Remote capacity units available with Red or Green letters to run 4 single or 2 double LED remotes. Damp Location Listed on all fixtures.

Note: Remote capacity exit, unit and combo will only power the CIR and COR series remotes.

Catalog Number		Cash Back
CER	Universal face, red letters, white	\$1
CERB	Universal face, red letters, black	\$1
CEG	Universal face, green letters, white	\$1
CEGB	Universal face, green letters, black	\$1
CERRC	Universal face, red letters, remote capacity 4 single or 2 doubles, white	\$1
CERRCB	Universal face, red letters, remote capacity 4 single or 2 doubles, black	\$1
CEGRC	Universal face, green letters, remote capacity 4 single or 2 doubles, white	\$1



CELS1RNE

Edge-Lit LED Emergency Exit

Surface mount single or double face LED Emergency Exits. Surface mount fixtures feature brushed aluminum construction with choice of red or green letters. Recessed mount fixtures feature aluminum flush mount construction also with choice of red or green letters. Both CELS and CELR come with premium NiCad battery installed.

Catalog Number		Cash Back
CELS1RNE	Surface mount, single face, red letters	\$1
CELS1GNE	Surface mount, single face, green letters	\$1
CELS2RNE	Surface mount, double face, red letters	\$1
CELS2GNE	Surface mount, double face, green letters	\$1



CELR1RNE

Edge-Lit LED Emergency Exit

Recessed mount single or double face LED Emergency Exits. Surface mount fixtures feature brushed aluminum construction with choice of red or green letters. Recessed mount fixtures feature aluminum flush mount construction also with choice of red or green letters. Both CELS and CELR come with premium NiCad battery installed.

Catalog Number		Cash Back
CELR1RNE	Recessed mount, single face, red letters	\$1
CELR1GNE	Recessed mount, single face, green letters	\$1
CELR2RNE	Recessed mount, double face, red letters	\$1
CELR2GNE	Recessed mount, double face, green letters	\$1



CEW Exit Series

Quality and value with a wet location rated emergency Exit sign. Housing and face-plate made from impact resistant UV stabilized polycarbonate. Housing is corrosion resistant and face-plate is fully gasketed.

Catalog Number		Cash Back
CEWSRE	Wet Location, Single-Face, Red, Emergency	\$1
CEWDRE	Wet Location, Double-Face, Red, Emergency	\$1
CEWSGE	Wet Location, Single-Face, Green, Emergency	\$1
CEWDGE	Wet Location, Double-Face, Green, Emergency	\$1



CIRD

Indoor and Outdoor Remotes

Single or double head LED remote lamp with mounting base. LED lamp-heads are adjustable for optimal illumination aiming.



CIRS



CORS



CORD

Catalog Number		Cash Back
CIRS	Single indoor LED remote	\$1
CIRD	Double indoor LED remote	\$1
CORS	Single outdoor LED remote	\$1
CORD	Double outdoor LED remote	\$1



CU2

LED Emergency Light

Dual LED head emergency light, 120/277VAC input, Damp Location Listed or dual LED head emergency light with remote capacity to run 2 single or 1 double LED remotes, Damp Location Listed. Black or white housing.



CU2B

Note: Remote capacity exit, unit and combo will only power the CIR and COR series remotes.

Catalog Number		Cash Back
CU2	Dual LED head, white 120/277V, white	\$1
CU2B	Dual LED head, white 120/277V, black	\$1
CU2RC	Dual LED head, with remote capacity white 120/277V	\$1
CU2RCB	Dual LED head, with remote capacity black 120/277V	\$1



CSWEU2 Wet Location Emergency Light

Fully adjustable, twin integral heads with 6VDC, 7 watt MR-16 halogen lamps. The housing is made of flame retardant thermo-plastic in gray color with a clear poly-carbonate shield which protects from rain and moisture and allows a UL wet location rating.

Catalog Number

CSWEU2 6V 14W, White housing with poly-carbonate clear cover

Cash Back

\$1



CU2W Series

LED performance and value in a compact and attractive wet location LED based emergency light. Grey housing is made of corrosion resistant UV stabilized polycarbonate.

Catalog Number

CU2WG Dual-Head Fully Adjustable, Grey Finish

CU2WB Dual-Head Fully Adjustable, Black Finish

Cash Back

\$1

\$1



International Voltage SALIDA LED Exit

Molded-in template for Quick installation. Features life-cycle of more than 10 years. Meets international input voltage requirements. Optional long-life 4.8V Nickel Cadmium battery for 90 minutes emergency lighting. Provided test switch and AC-On indicator, canopy included.

Catalog Number

CSRIV Universal SALIDA face, red LED, AC only

CSREIV Universal SALIDA face, red LED Emergency, NiCad battery

Cash Back

\$1

\$1

ExpressLine Ready to Maximize your Sales!

Hubbell Lighting's ExpressLine program offers high impact point-of-purchase product merchandise gondolas, literature, counter mats and counter displays to simplify your product selection!



Counter Displays & Application Guides



Posters, Counter Mats & Web based Design Application Tools



Contractor Reward Incentives & Product Selection Guides

SELECT PRODUCTS INCLUDE FULL COLOR PACKAGING THAT LETS YOU MAKE THE RIGHT CHOICE. FAST! SO GET IN THE EXPRESSLINE.



TO GET YOUR CASH BACK, SEND YOUR CLEARLY MARKED INVOICES TO:

Hubbell Lighting, Inc.

**Attn: ExpressLine Cash Back Manager
701 Millennium Boulevard
Greenville, SC 29607**

Invoices must be received by 12/15/15

For more information visit our web site

www.hubbelloutdoor.com



UNITED STATES • Hubbell Lighting, Inc. • 701 Millennium Boulevard • Greenville, SC 29607 • PHONE: 864-678-1000
CANADA • Hubbell Canada • 870 Brock Road • Pickering, Ontario L1W 1Z8 • www.hubbell-canada.com
MEXICO • Hubbell De Mexico, S.A. DE.CV • Av. Insurgentes Sur # 1228, 8th Floor
Col. Tiacoquemecatl del Valle • 03200 Mexico, D.F. • www.hubbell.com.mx

Due to our continued efforts to improve our products, product specifications are subject to change without notice.

Copyright © 2015 HUBBELL LIGHTING All Rights Reserved HOL0088 EXPRESSLINEPLT 1/15 10K Printed in USA