



HUBBELL
Outdoor Lighting





ASL LED Area/Site



Regional Distribution Center Stock List

Part Number	Catalog Number	UPC Code	Description	CA 03	IL 06	PA 10	SC 07	Wt. each	Ctn. Qty.	Price
ASL16L3	ASL-16L-3	785988031603	Medium size 16 LED configuration, Dark Bronze, Type III, 4000K	●		●		18	EA	
ASL16L4	ASL-16L-4	785988031627	Medium size 16 LED configuration, Dark Bronze, Type IV, 4000K	●		●		18	EA	
ASL24L3	ASL-24L-3	785988031610	Large size 24 LED configuration, Dark Bronze, Type III, 4000K	●		●		20	EA	
ASL24L4	ASL-24L-4	785988031634	Large size 24 LED configuration, Dark Bronze, Type IV, 4000K	●		●		20	EA	
ASLMAF	ASL-MAF	785988031641	Mast arm kit and bird shield for mounting on 2 3/8" OD arms	●		●		4.0	EA	



ASL LED Area/Site



10-Day Quick Ship Ordering Guide Order Limit Per Fixture Selection: 15

SERIES	NUMBER OF LEDs	CCT	DISTRIBUTION	VOLTAGE	FINISH	OPTION
ASL Area/Site	16L 12 LEDs 24L 24 LEDs	4K 4000K 5K 5000K	3 Type III 4 Type IV	U Universal 120-277V	BZ Bronze BL Black PS Platinum	7PR Twist lock PC receptacle



ALF Linear LED Floodlight



Regional Distribution Center Stock List

Part Number	Catalog Number	UPC Code	Description	CA 03	IL 06	PA 10	SC 07	Wt. each	Ctn. Qty.	Price
ALF12LU5KBZ	ALF-12LU-5K-BZ	785988020713	Flood, Linear, 23w LED, 120-277V, Wide, Bronze	●	●	●	●	8.0	EA	
ALF6LU5KBZ	ALF-6LU-5K-BZ	785988109168	Flood, Linear, 11w LED, 120-277V, Wide, Bronze	●	●	●	●	4.0	EA	



F Series LED Floodlights



Regional Distribution Center Stock List

Part Number	Catalog Number	UPC Code	Description	CA 03	IL 06	PA 10	SC 07	Wt. each	Ctn. Qty.	Price
FSL7	FSL-7	785988030675	Flood, 27w LED, 120-277V, Wide beam, Bronze	●	●	●	●	4.6	EA	
FSL7PC1	FSL-7-PC1	785988030736	Flood, 27w LED, 120V, Wide beam, Bronze, PC	●	●		●	4.6	EA	
FML14	FML-14	785988030682	Flood, 53w LED, 120-277V, Wide beam, Bronze	●	●	●	●	7.7	EA	
FML14PCU	FML-14-PCU	785988031573	Flood, 53w LED, 120-277V, Wide beam, Bronze, PC	●	●	●		7.7	EA	
FLL28L	FLL-28L	785988030934	Flood, 100w LED, 120-277V, Wide beam, Bronze	●	●	●	●	20.0	EA	
FXL56L	FXL-56L	785988030941	Flood, 200w LED, 120-277V, Wide beam, Bronze	●	●	●	●	32.0	EA	
FLLY140L4KU	FLL-Y-140L-4K-U	785988031726	Flood, 100w LED, 120-277V, Wide beam, Bronze, Yoke	●	●	●	●	7.7	EA	
FLLY140L5KU	FLL-Y-140L-5K-U	785988031733	Flood, 100w LED, 120-277V, Wide beam, Bronze, Yoke	●	●	●	●	7.7	EA	
FLLK140L4KU	FLL-K-140L-4K-U	785988031740	Flood, 100w LED, 120-277V, Wide beam, Bronze, Knuckle	●		●		7.7	EA	



BUL LED Bullet



Regional Distribution Center Stock List

Part Number	Catalog Number	UPC Code	Description	CA 03	IL 06	PA 10	SC 07	Wt. each	Ctn. Qty.	Price
BUL1L3KU	BUL-1L-3K-U	785988031757	LED bullet flood, 3000K CCT	●		●		5.0	EA	
BUL1L4KU	BUL-1L-4K-U	785988031764	LED bullet flood, 4000K CCT	●		●		5.0	EA	



Quartzliter® Floods



Regional Distribution Center Stock List

Part Number	Catalog Number	UPC Code	Description	CA 03	IL 06	PA 10	SC 07	Wt. each	Ctn. Qty.	Price
QL1505	QL-1505	785988464487	Quartzliter, 900-1500w, Gray, Less lamp	●	●	●	●	6.0	EA	
QL505	QL-505	785988464340	Quartzliter, 300- 500w, Gray, Less lamp	●	●	●	●	4.0	EA	



Quartz Worklights

3S SCHEDULED STOCK SHIPMENTS **Regional Distribution Center Stock List**

Part Number	Catalog Number	UPC Code	Description	CA 03	IL 06	PA 10	SC 07	Wt. each	Ctn. Qty.	Price
QWL1000T	QWL-1000T	785988019151	Quartz worklight, 2 x 500w, 120V Tripod mount, "2 in 1" design, 5' cord set with individual switching, Protective guards, with lamps		●	●		27.0	EA	
QWL150C	QWL-150C	785988004683	Quartz worklight, 150w, 120V, Clamp/hook mount, 5' cord set with switch, Protective guard, with lamp		●			2.0	EA	
QWL500S	QWL-500S	785988004690	Quartz worklight, 500w, 120V, Hand stand, 5' cord set with switch, 2 Lamps- 500w / 300w included		●			4.0	EA	



"Q" Series Quartz

3S SCHEDULED STOCK SHIPMENTS **Regional Distribution Center Stock List**

Part Number	Catalog Number	UPC Code	Description	CA 03	IL 06	PA 10	SC 07	Wt. each	Ctn. Qty.	Price
Q150B	Q-150-B	785988465736	Quartz, 150w, 120V, Bronze, with Lamp		●			1.5	EA	
Q150W	Q-150-W	785988465743	Quartz, 150w, 120V, White, with Lamp	●				1.5	EA	
Q300B	Q-300-B	785988465712	Quartz, 300w, 120V, Bronze, with Lamp		●			2.6	EA	
Q500B	Q-500-B	785988465699	Quartz, 500w, 120V, Bronze, with Lamp	●	●	●	●	3.0	EA	
Q500W	Q-500-W	785988465705	Quartz, 500w, 120V, White, with Lamp	●				3.0	EA	



Facade Floods

3S SCHEDULED STOCK SHIPMENTS **Regional Distribution Center Stock List**

Part Number	Catalog Number	UPC Code	Description	CA 03	IL 06	PA 10	SC 07	Wt. each	Ctn. Qty.	Price
F042F8	F-042F8	785988005598	Flood, Façade, 42w CFL, 120-277V, with Lamp	●				6.0	EA	
F70H1	F-100H1	785988206353	Flood, Façade, 70w PS, Quad-Tap, with Lamp	●				11.0	EA	
F100H1	F-100H1	785988206360	Flood, Façade, 100w PS, Quad-Tap, with Lamp		●			11.0	EA	
F150S1	F-150S1	785988206339	Flood, Façade, 150w HPS, 120V, with Lamp		●			6.0	EA	



Microliter® Floodlights

35 SCHEDULED STOCK SHIPMENTS

Regional Distribution Center Stock List

Part Number	Catalog Number	UPC Code	Description	CA 03	IL 06	PA 10	SC 07	Wt. each	Ctn. Qty.	Price
MIC0070H358	MIC-0070H-358	785988670321	Flood, Compact, 70w PS, Quad-Tap, Bronze, with Lamp			•			12.0	EA
MIC0100H358	MIC-0100H-358	785988670116	Flood, Compact, 100w PS, Quad-Tap, Bronze, with Lamp		•		•		13.0	EA
MIC0150P338	MIC-0150P-338	785988007929	Flood, Compact, 150w PS, Quad-Tap, Narrow beam, Bronze, with Lamp		•				14.0	EA
MIC0150P358	MIC-0150P-358	785988007912	Flood, Compact, 150w PS, Quad-Tap, Medium beam, Bronze, with Lamp	•	•	•	•		14.0	EA



Miniliter® LED Floods



QS5 5-Day Quick Ship Ordering Guide

Order Limit Per Fixture Selection: 15

CATALOG NUMBER	DESCRIPTION	CCT	LUMENS	WATTS
MHS-Y-30LU-5K-W-BZ	Flood, Yoke, 30 LED, 120-277V, Wide Beam, Bronze	5000K	6164	71
MHS-Y-30LU-5K-M-BZ	Flood, Yoke, 30 LED, 120-277V, Medium Beam, Bronze	5000K	6164	71

QS7 10-Day Quick Ship Ordering Guide

Order Limit Per Fixture Selection: 15

MHS	-	30L	U	-	-	BZ	-	
SERIES	MOUNTING	NUMBER OF LEDs	VOLTAGE	CCT	BEAM	FINISH	OPTIONS	
MHS Miniliter®	Y Yoke K Knuckle	30L 30 LEDs	U 120-277V	4K 4000K 5K 5000K	M 4x4 N 2x2 W 6x6	BZ Bronze	PC1 Button photocontrol, 120V PC4 Button photocontrol, 277V	



Miniliter® V Floodlight Series

35 SCHEDULED STOCK SHIPMENTS

Regional Distribution Center Stock List

Part Number	Catalog Number	UPC Code	Description	CA 03	IL 06	PA 10	SC 07	Wt. each	Ctn. Qty.	Price
MHSK250P8	MHS-K250P8	785988008018	Flood, Knuckle, 250w PS, Quad-Tap, Bronze, with Lamp	•				27.0	EA	
MHSK400P8	MHS-K400P8	785988007981	Flood, Knuckle, 400w PS, Quad-Tap, Bronze, with Lamp		•	•		31.0	EA	
MHSY150P8	MHS-Y150P8	785988007974	Flood, Yoke, 150w PS, Quad-Tap, Bronze, with Lamp		•			21.0	EA	
MHSY250P8	MHS-Y250P8	785988007967	Flood, Yoke, 250w PS, Quad-Tap, Bronze, with Lamp	•	•	•	•	22.0	EA	
MHSY400P5	MHS-Y400P5	785988007950	Flood, Yoke, 400w PS, 480V, Bronze, with Lamp	•				26.0	EA	
MHSY400P8	MHS-Y400P8	785988007936	Flood, Yoke, 400w PS, Quad-Tap, Bronze, with Lamp	•	•	•	•	26.0	EA	
MHSY400S5	MHS-Y400S5	785988698707	Flood, Yoke, 400w HPS, 480V, Bronze, with Lamp	•				28.0	EA	
MHSY400S8	MHS-Y400S8	785988698714	Flood, Yoke, 400w, HPS, Quad-Tap, Bronze, with Lamp	•		•		28.5	EA	



Magnuliter® Floodlight MV Series



3 SCHEDULED STOCK SHIPMENTS Regional Distribution Center Stock List

Part Number	Catalog Number	UPC Code	Description	CA 03	IL 06	PA 10	SC 07	Wt. each	Ctn. Qty.	Price
MVK1000H268	MVK-1000H-268	785988656455	Flood, Knuckle, 1000w MH, Quad-Tap, Bronze, with Lamp		●			47.0	EA	
MVM1000H265 ¹	MVM-1000H-265	785988655793	Flood, Yoke, 1000w MH, 480V, Bronze, with Lamp		●			44.0	EA	
MVM1000H268 ¹	MVM-1000H-268	785988652372	Flood, Yoke, 1000w MH, Quad-Tap, Bronze, with Lamp		●		●	44.0	EA	

¹ Cord on MVM style only included



LNC® LED Wallpacks



3 SCHEDULED STOCK SHIPMENTS Regional Distribution Center Stock List

Part Number	Catalog Number	UPC Code	Description	CA 03	IL 06	PA 10	SC 07	Wt. each	Ctn. Qty.	Price
LNC5LU5K	LNC-5LU-5K	785988020645	Wallpack, Zero uplight, LED 13w, 120-277V, Type III, Bronze	●	●	●	●	4.0	EA	
LNC5LU5KPC	LNC-5LU-5K-PC	785988020652	Wallpack, Zero uplight, LED 13w, 120V, PC, Type III, Bronze	●	●	●		4.0	EA	
LNC7LU5K31	LNC-7LU-5K-3-1	785988020669	Wallpack, LNC, 16w LED, 120-277V, 5K, Type III, Bronze	●	●	●	●	4.0	EA	
LNC9LU5K31	LNC-9LU-5K-3-1	785988020683	Wallpack, LNC, 21w LED, 120-277V, 5K, Type III, Bronze	●	●	●	●	4.0	EA	

QS₁₀ 10-Day Quick Ship Ordering Guide

Order Limit Per Fixture Selection: 15

SERIES	NUMBER OF LEDS/SOURCE/VOLTAGE	CCT	IES DISTRIBUTION	FINISH	OPTIONS
LNC LNC no uplight	7LU 7 LEDs, 16w input, 120-277V 9LU 9 LEDs, 21w input, 120-277V	4K 4000K nominal 5K 5000K nominal	3 Type III 4 Type IV	1 Bronze 2 Black 3 Gray 4 White 5 Platinum	PC(X) Button photo-control, replace X with voltage, specify 1-120V, 2-208V, 3-240V, 4-277V



LNC2® LED Wallpacks



3 SCHEDULED STOCK SHIPMENTS

Regional Distribution Center Stock List

Part Number	Catalog Number	UPC Code	Description	CA 03	IL 06	PA 10	SC 07	Wt. each	Ctn. Qty.	Price
LNC212LU5K31	LNC2-12LU-5K-3-1	785988030071	Wallpack, Zero uplight, 28w LED 120-277V, 5000K, Type III, Bronze	•	•	•	•	7.0	EA	
LNC212LU5K31PC1	LNC2-12LU-5K-3-1-PC-1	785988030088	Wallpack, Zero uplight, 28w LED 120V, 5000K, Type III, Bronze, PC	•	•	•		7.0	EA	
LNC218LU5K31	LNC2-18LU-5K-3-1	785988021031	Wallpack, Zero uplight, 45w LED 120-277V, 5000K, Type III, Bronze	•	•	•	•	7.0	EA	
LNC218LU5K31PC1	LNC2-18LU-5K-3-1-PC-1	785988030347	Wallpack, Zero uplight, 45w LED 120V, 5000K, Type III, Bronze, PC	•	•	•		7.0	EA	



LNC2® LED Wallpacks



QS75

5-Day Quick Ship Ordering Guide

Order Limit Per Fixture Selection: 15

CATALOG NUMBER	DESCRIPTION	CCT	WT. EACH	LUMENS	WATTS
LNC2-12LU-4K-3-1	Wallpack, Zero uplight, 28w LED 120-277V, 4000K, Type III, Bronze	4000K	7.0	2291	28
LNC2-18LU-4K-3-1	Wallpack, Zero uplight, 45w LED 120-277V, 4000K, Type III, Bronze	4000K	7.0	3311	45
LNC2-18LU-5K-4-1	Wallpack, Zero uplight, 45w LED 120-277V, 5000K, Type IV, Bronze	5000K	7.0	3311	28

QS710

10-Day Quick Ship Ordering Guide

Order Limit Per Fixture Selection: 15

SERIES	NUMBER OF LEDS/SOURCE/VOLTAGE	CCT	IES DISTRIBUTION	FINISH	OPTIONS
LNC2 LNC2 no uplight	12LU 12 LEDs, 29w input, Universal voltage 120-277V 18LU 18 LEDs, 45w input, Universal voltage 120-277V	4K 4000K nominal 5K 5000K nominal	3 Type III 4 Type IV	1 Bronze 2 Black 3 Gray 4 White 5 Platinum	PC1 Button photo-control, 120V PC4 Button photo-control, 277V



ALF Linear LED Wallpacks



3 SCHEDULED STOCK SHIPMENTS

Regional Distribution Center Stock List

Part Number	Catalog Number	UPC Code	Description	CA 03	IL 06	PA 10	SC 07	Wt. each	Ctn. Qty.	Price
ALFW6LU5K31	ALFW-6LU-5K-BZ	785988020621	Flood, Wall, 11w LED, 120-277V, Wide, Bronze	•				5.0	EA	
ALFW6LU5K31PC1	ALFW-6LU-5K-BZ-PC	785988020638	Flood, Wall, 11w LED, 120V, PC, Wide, Bronze	•				5.0	EA	



NRG® – 1100 Full Cut-off Wallpacks

Regional Distribution Center Stock List

Part Number	Catalog Number	UPC Code	Description	CA 03	IL 06	PA 10	SC 07	Wt. each	Ctn. Qty.	Price
NRG1111W	NRG-1111-W	785988004348	Wallpack, Compact, Zero uplight, 100w PS, 120/277/347V, White, with Lamp	●				12.0	EA	
NRG1112W	NRG-1112-W	785988004386	Wallpack, Compact, Zero uplight, 100w HPS, 120/277/347V, White, with Lamp	●				10.0	EA	
NRG1143W	NRG-1143-W	785988004409	Wallpack, Compact, Zero uplight, 42w CFL 120-277V, White, with Lamp	●				7.0	EA	
NRG1151W	NRG-1151-W	785988004300	Wallpack, Compact, Zero uplight, 50w PS, 120/277V, White, with Lamp	●				9.0	EA	
NRG1172W	NRG-1172-W	785988004362	Wallpack, Compact, Zero uplight, 70w HPS, 120/277/347V, White, with Lamp	●				9.0	EA	



Perimaliter III® LED Wallpack Series



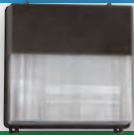
Regional Distribution Center Stock List

Part Number	Catalog Number	UPC Code	Description	CA 03	IL 06	PA 10	SC 07	Wt. each	Ctn. Qty.	Price
PGM330LU5KBZ	PGM3-30LU-5K-BZ	785988029686	Wallpack, Glass refractor, LED, 5000K, 120-277V, Bronze	●				20.0	EA	
PVL330LU5KBZ	PVL3-30LU-5K-BZ	785988029662	Wallpack, Polycarbonate refractor, LED, 5000K, 120-277V, Bronze				●	13.0	EA	

10-Day Quick Ship Ordering Guide

Order Limit Per Fixture Selection: 15

<input type="text"/>	-	<input type="text" value="30LU"/>	-	<input type="text"/>	-	<input type="text"/>	-	<input type="text" value="BZ"/>	-	<input type="text"/>
SERIES	NUMBER OF LEDS/SOURCE/VOLTAGE		CCT	DRIVE CURRENT	FINISH	OPTIONS				
PGM3 Glass Refractor	30LU	30 LEDs, 120-277V	4K 4000K nominal	BLANK-700mA	BZ Bronze	PC1	Button photo-control, 120V			
PVL3 Polycarbonate Refractor			5K 5000K nominal	035-350mA		PC4	Button photo-control, 277V			



Perimaliter® III PVL Series Polycarbonate Refractor Wallpacks



Regional Distribution Center Stock List

Part Number	Catalog Number	UPC Code	Description	CA 03	IL 06	PA 10	SC 07	Wt. each	Ctn. Qty.	Price
PVL3070S18BZ	PVL3-070S-18-BZ	785988005901	Wallpack, 700w HPS, Quad-Tap, Bronze		●			13.0	EA	
PVL3100S18BZ	PVL3-100S-18-BZ	785988005925	Wallpack, 100w HPS, Quad-Tap, Bronze	●				18.0	EA	
PVL3150P18BZL	PVL3-150P-18-BZ-L	785988008469	Wallpack, 150w PS, Quad-Tap, Bronze, with Lamp	●	●	●	●	20.0	EA	
PVL3150S18BZL	PVL3-150S-18-BZ-L	785988005963	Wallpack, 150w HPS, Quad-Tap, Bronze, with Lamp	●		●		18.0	EA	
PVL3150S51BZL	PVL3-150S-51-BZ-L	785988007844	Wallpack, 150w HPS, Quad-Tap, Bronze, with Lamp		●	●		13.0	EA	
PVL3242F18BZL	PVL3-242F-18-BZ-L	785988015948	Wallpack, 2x42w CFL, Quad-Tap, Bronze, with Lamp	●				12.0	EA	
PVL3V	PVL-3V	785988012077	Visor, Zero upright, Bronze, PVL3/ PGL/ PRS/ PGS		●			6.0	EA	



Perimaliter III® PGM/PGL Series - Glass Refractor Wallpacks



Regional Distribution Center Stock List

Part Number	Catalog Number	UPC Code	Description	CA 03	IL 06	PA 10	SC 07	Wt. each	Ctn. Qty.	Price
80033990104	800-3399-0104	785988391646	Replacement refractor/door assy for PGM, Bronze	●	●	●	●	8.0	EA	
PGL250P1281LP	PGL-250P-128-1-LP	785988566662	Wallpack, 250w PS, Quad-Tap, Bronze, with Lamp			●		28.0	EA	
PGL350P1281LP	PGL-350P-128-1-LP	785988566679	Wallpack, 350w PS, Quad-Tap, Bronze, with Lamp			●		30.3	EA	
PGM3100P18BZL	PGM3-100P-18-BZ-L	785988005789	Wallpack, 100w PS, Quad-Tap, Bronze, with Lamp		●			25.0	EA	
PGM3150P18BZ	PGM3-150P-18-BZ	785988019236	Wallpack, 150w PS, Quad-Tap, Bronze			●		25.0	EA	
PGM3150P18BZL	PGM3-150P-18-BZ-L	785988008568	Wallpack, 150w PS, Quad-Tap, Bronze, with Lamp	●	●	●	●	25.0	EA	
PGM3150S18BZ	PGM3-150S-18-BZ	785988005796	Wallpack, 150w HPS, Quad-Tap, Bronze	●				25.0	EA	
PGM3250P18BZ	PGM3-250P-18-BZ	785988019243	Wallpack, 250w PS, Quad-Tap, Bronze			●		27.0	EA	
PGM3250P18BZL	PGM3-250P-18-BZ-L	785988008575	Wallpack, 250w PS, Quad-Tap, Bronze, with Lamp	●	●	●	●	27.0	EA	
PGM3250S18BZ	PGM3-250S-18-BZ	785988005864	Wallpack, 250w HPS, Quad-Tap, Bronze	●				33.0	EA	



WGH LED Series - Low Profile Glass Refractor Wallpack



Regional Distribution Center Stock List

Part Number	Catalog Number	UPC Code	Description	CA 03	IL 06	PA 10	SC 07	Wt. each	Ctn. Qty.	Price
WGH110L4KUM	WGH-110L-4K-U-M	785988031139	Wallpack, Glass refractor, 54w LED, 120-277V, Medium, 4000K	●	●	●	●	12.0	EA	
WGH225L4KUL	WGH-225L-4K-U-L	785988031146	Wallpack, Glass refractor, 100w LED, 120-277V, Large, 4000K	●	●	●	●	12.0	EA	

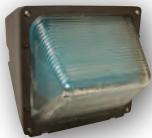


WGH Series – Horizontal Lamp Low Profile Wallpacks



Regional Distribution Center Stock List

Part Number	Catalog Number	UPC Code	Description	CA 03	IL 06	PA 10	SC 07	Wt. each	Ctn. Qty.	Price
WGH70H	WGH-70H	785988465842	Wallpack, Glass refractor, 70w PS, Quad-Tap, Bronze, with Lamp		●		●	9.0	EA	
WGH100H	WGH-100H	785988465859	Wallpack, Glass refractor, 100w PS, Quad-Tap, Bronze, with Lamp	●	●	●	●	10.0	EA	
WGH150P	WGH-150P	785988005680	Wallpack, Glass refractor, 150w PS, Quad-Tap, Bronze, with Lamp	●	●	●	●	11.8	EA	
WGH150S	WGH-150S	785988465934	Wallpack, Glass refractor, 150w HPS, Quad-Tap, Bronze, with Lamp	●				17.0	EA	
WGH150S120	WGH-150S-120	785988005581	Wallpack, Glass refractor, 150w HPS, 120V, Bronze, with Lamp	●				17.0	EA	
WGH250P	WGH-250P	785988005697	Wallpack, Glass refractor, 250w PS, Quad-Tap, Bronze, with Lamp	●	●	●	●	34.0	EA	
WGH400P	WGH-400P	785988005727	Wallpack, Glass refractor, 400w PS, Quad-Tap, Bronze, with Lamp	●	●	●	●	37.0	EA	



Compact WPH Refractor Wallpacks



Regional Distribution Center Stock List

Part Number	Catalog Number	UPC Code	Description	CA 03	IL 06	PA 10	SC 07	Wt. each	Ctn. Qty.	Price
WPH70S	WPH-70S	785988465866	Polycarbonate refractor, 70w HPS, 120V, Bronze, with Lamp	●				16.0	EA	



NRG® LED Decorative Compact Wallpack



Regional Distribution Center Stock List

Part Number	Catalog Number	UPC Code	Description	CA 03	IL 06	PA 10	SC 07	Wt. each	Ctn. Qty.	Price
NRG356L4KU	NRG-356L-4K-U	785988031399	Wallpack, NRG, 20 LED, 120-277V, 4K, Bronze	●		●		6.0	EA	
NRG356L4KUPC	NRG-356L-4K-U-PC	785988031405	Wallpack, NRG, 20w LED, 120-277V, PC, 4K, Bronze	●		●		6.0	EA	
NRG356L5KU	NRG-356L-5K-U	785988031412	Wallpack, NRG, 20 LED, 120-277V, 5K, Bronze	●	●	●	●	6.0	EA	
NRG356L5KUPC	NRG-356L-5K-U-PC	785988031429	Wallpack, NRG, 20w LED, 120-277V, PC, 5K, Bronze	●	●	●	●	6.0	EA	



NRG® 300B Vandal Resistant Perimeter Wallpacks



3S SCHEDULED STOCK SHIPMENTS

Regional Distribution Center Stock List

Part Number	Catalog Number	UPC Code	Description	CA 03	IL 06	PA 10	SC 07	Wt. each	Ctn. Qty.	Price
NRG301BPC	NRG-301B-PC	785988465811	Wallpack, Vandal resistant, 50w HPS, 120V, PC, with Lamp, Bronze	●		●		5.0	EA	
NRG304B	NRG-304B	785988567164	Wallpack, Vandal resistant, 42w CFL, 120V, with Lamp, Bronze	●		●		5.0	EA	
NRG304BMS	NRG-304B-MS	785988019175	Wallpack, Vandal resistant, 42w CFL, 120V, with Motion sensor, Lamp, Bronze	●				5.0	EA	
NRG304BPC	NRG-304B-PC	785988465835	Wallpack, Vandal resistant, 42w CFL, 120V, PC, with Lamp, Bronze	●		●		4.0	EA	
NRG307B	NRG-307B	785988567157	Wallpack, Vandal resistant, 70w HPS, 120V, with Lamp, Bronze	●	●			6.0	EA	
NRG307BPC	NRG-307B-PC	785988465828	Wallpack, Vandal resistant, 70w HPS, 120V, PC, with Lamp, Bronze	●		●		6.0	EA	
NRG350BPC	NRG-350B-PC	785988567126	Wallpack, Vandal resistant, 50w PS, PC, 120V, with Lamp, Bronze	●		●		5.0	EA	



NRG® 200B Decorative Compact Wallpacks*



3S SCHEDULED STOCK SHIPMENTS

Regional Distribution Center Stock List

Part Number	Catalog Number	UPC Code	Description	CA 03	IL 06	PA 10	SC 07	Wt. each	Ctn. Qty.	Price
NRG204B	NRG-204B	785988019304	Wallpack, Decorative compact, 42w CFL, 120-277V, Bronze, Lamp	●				6.0	EA	
NRG204BMS	NRG-204BMS	785988020328	Wallpack, Decorative compact, 42w CFL, 120V Motion sensor, Bronze, Lamp	●				7.0	EA	
NRG250B	NRG-250B	785988025274	Wallpack, Decorative compact, 50w PS, 120V, Bronze, Lamp	●				6.0	EA	
NRG250BPC	NRG-250B-PC	785988026281	Wallpack, Decorative compact, 50w PS, 120V, Photocontrol, Bronze, Lamp	●				6.0	EA	

* Subject to availability



GSL Garage/Surface LED Series



3S SCHEDULED STOCK SHIPMENTS

Regional Distribution Center Stock List

Part Number	Catalog Number	UPC Code	Description	CA 03	IL 06	PA 10	SC 07	Wt. each	Ctn. Qty.	Price
GSL15L	GSL-15L	785988030972	Garage/Canopy/Ceiling mount, 55w, 4000K, Symmetric/Asymmetric distribution, Gray	●				13.8	EA	
GSL21L	GSL-21L	785988030989	Garage/Canopy/Ceiling mount, 75w, 4000K, Symmetric/Asymmetric distribution, Gray	●				13.8	EA	
GSL15LSCP	GSL-15L-SCP	785988031795	Garage/Canopy/Ceiling mount, 55w, 4000K, Symmetric/Asymmetric distribution, Gray, Motion Control	●				13.8	EA	
GSL21LSCP	GSL-21L-SCP	785988031801	Garage/Canopy/Ceiling mount, 75w, 4000K, Symmetric/Asymmetric distribution, Gray, Motion Control	●				13.8	EA	
GSLCS	GSL-CS	785988031771	Comfort shield		●			.5	EA	
GSLPC	GSL-PC	785988031771	Vandal Guard	●				.5	EA	



NRG® 4000 LED Lumasquare® Series



QS75 5-Day Quick Ship Ordering Guide

Order Limit Per Fixture Selection: 15

CATALOG NUMBER	DESCRIPTION	CCT	WT. EACH	LUMENS	WATTS
NRG-4-30LU-4K-035-BZ	Ceiling mount, 35w, 30 LEDs, 120-277V, Bronze	4000K	13.9	3355	35w
NRG-4-30LU-5K-035-BZ	Ceiling mount, 35w, 30 LEDs, 120-277V, Bronze	5000K	13.9	3543	35w
NRG-4-30LU-4K-BZ	Ceiling mount, 71w, 30 LEDs, 120-277V, Bronze	4000K	13.9	3355	35w
NRG-4-30LU-5K-BZ	Ceiling mount, 71w, 30 LEDs, 120-277V, Bronze	5000K	13.9	3543	35w



S Series Vandal Resistant

3S SCHEDULED STOCK SHIPMENTS Regional Distribution Center Stock List

Part Number	Catalog Number	UPC Code	Description	CA 03	IL 06	PA 10	SC 07	Wt. each	Ctn. Qty.	Price
S970H	S9-70H	785988005086	Surface square, 9" Wet location, 70w PS, Quad-Tap, Polycarbonate refractor, TP screws, Lamp, Bronze	●		●		10.3	EA	
S12100H	S12-100H	785988005123	Surface square, 12" Wet location, 100w PS, Quad-Tap, Polycarbonate refractor, TP screws, Lamp, Bronze	●				15.0	EA	
S12150P	S12-150P	785988008483	Surface square, 12" Wet location, 150w PS, Quad-Tap, Polycarbonate refractor, TP screws, Lamp, Bronze		●			16.0	EA	



R Series Vandal Resistant

3S SCHEDULED STOCK SHIPMENTS Regional Distribution Center Stock List

Part Number	Catalog Number	UPC Code	Description	CA 03	IL 06	PA 10	SC 07	Wt. each	Ctn. Qty.	Price
R12100H	R12-100H	785988005215	Surface round, 12" Wet location, 100w PS, Quad-Tap, Polycarbonate refractor, TP screws, Lamp, Bronze	●				15.0	EA	
R970H	R9-70H	785988005178	Surface round, 9" Wet location, 70w PS, Quad-Tap, Polycarbonate refractor, TP screws, Lamp, Bronze	●				10.0	EA	
R970S	R9-70S	785988005185	Surface round, 9" Wet location, 70w HPS, Quad-Tap, Polycarbonate refractor, TP screws, Lamp, Bronze	●				10.0	EA	



Multi-purpose Dusk-to-Dawn LED



Regional Distribution Center Stock List

Part Number	Catalog Number	UPC Code	Description	CA 03	IL 06	PA 10	SC 07	Wt. each	Ctn. Qty.	Price
DDL9L1	DDL-9L1	785988030699	Dusk-to-Dawn multi-purpose, 40w LED, 5000K, 120V, Gray, with Arm	•	•	•	•	7	EA	
DDL140L1	DDL-140L1	785988031122	Dusk-to-Dawn multi-purpose, 43.5w, 5000K, High lumen, 120V, Gray, with Arm	•	•		•	7	EA	
DDL56L4K1NA	DDL-56L-4K-1-NA	785988030699	Dusk-to-Dawn multi-purpose, 30w LED, 4000K, 120V, Gray, no Arm	•			•	6	EA	



DD Series – Dusk to Dawn



Regional Distribution Center Stock List

Part Number	Catalog Number	UPC Code	Description	CA 03	IL 06	PA 10	SC 07	Wt. each	Ctn. Qty.	Price
DDR100S	DDR-100S	785988466146	30" Alum arm, 12" Head, 100w HPS, 120V, Kit with lamp		•			7.0	EA	
DDR150S	DDR-150S	785988466153	30" Alum arm, 12" Head, 150w HPS 120V, Kit with lamp		•			7.0	EA	
DDR5AP	DDR-5AP	785988466184	Replacement optical assembly with latches for DDR fixtures		•			2.0	EA	
DDS100P	DDS-100P	785988012060	24" Alum arm, 12" Screw-on optics, 100w PS, 120V, Kit with lamp, UL approved	•	•	•	•	6.0	EA	
DDS100PL	DDS-100PL	785988020997	24" Alum arm, 12" Latch-on optic, 100w PS, 120V, with lamp	•				6.0	EA	
DDS100S	DDS-100S	785988466122	24" Alum arm, 12" Screw-on optics, 100w HPS, 120V, Kit with lamp, UL approved	•				5.0	EA	
DDS150S	DDS-150S	785988466139	24" Alum arm, 12" Screw-on optics, 150w HPS, 120V, Kit with lamp, UL approved	•	•	•	•	7.0	EA	
DDS65F	DDS-65F	785988014248	24" Alum arm, 12" Screw-on optics, 65w CFL, 120V, Kit with lamp, UL approved		•		•	4.0	EA	



LED Vaportites



3S SCHEDULED STOCK SHIPMENTS Regional Distribution Center Stock List

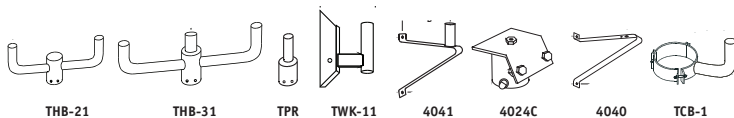
Part Number	Catalog Number	UPC Code	Description	CA 03	IL 06	PA 10	SC 07	Wt. each	Ctn. Qty.	Price
VBGL1	VBGL-1	785988030651	Ceiling mount vaportite, 12w LED, 120-277V, Platinum Silver	•	•			3.5	EA	
VWGL1	VWGL-1	785988030668	Wall mount vaportite, 12w LED, 120-277V, Platinum Silver	•	•	•	•	3.6	EA	



Wet Location Vaportites

3S SCHEDULED STOCK SHIPMENTS Regional Distribution Center Stock List

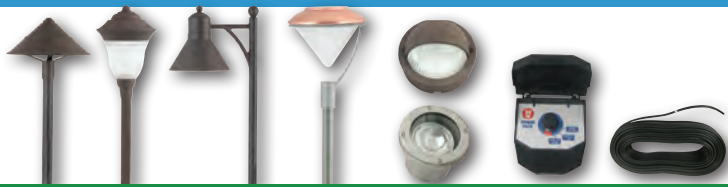
Part Number	Catalog Number	UPC Code	Description	CA 03	IL 06	PA 10	SC 07	Wt. each	Ctn. Qty.	Price
VBGG-150	VBGG-150	785988467167	Globe & guard, 150w Incandescent, Ceiling/pendant, Platinum	•	•	•	•	3.0	EA	
VWGG-150	VWGG-150	785988467181	Globe & guard, 150w Incandescent, Wall box, Platinum	•	•	•	•	3.5	EA	



Mounting Brackets & Accessories

3S SCHEDULED STOCK SHIPMENTS Regional Distribution Center Stock List

Part Number	Catalog Number	UPC Code	Description	CA 03	IL 06	PA 10	SC 07	Wt. each	Ctn. Qty.	Price
4024C	4024C	785988310326	Slipfitter, 2 3/8" Tenon	•	•	•	•		2.0	
4040	4040	785988310555	Bracket, Wall mount	•	•	•	•		5.0	
4041	4041	785988310579	Bracket, Wall mount	•	•	•	•		7.0	
TCB1	TCB-1	785988496501	Pole clamp-on bracket, Bronze		•				15.0	
THB21	THB-21	785988498420	Accessory, Flood, Tenon, Two, Bronze	•	•	•	•		12.0	
THB31	THB-31	785988498437	Accessory, Flood, Tenon, Three, Bronze		•				30.0	
TPR4	TPR-4	785988500505	Accessory, Flood, Tenon, Reducer, Pole, Bronze		•				9.0	
TWK11	TWK-11	785988502202	Bracket, Wall mount		•		•		15.0	



12V LED Lightscaper® Fixtures



3 SCHEDULED
STOCK
SHIPMENTS

Regional Distribution Center Stock List

Part Number	Catalog Number	UPC Code	Description	CA 03	IL 06	PA 10	SC 07	Wt. each	Ctn. Qty.	Price
CB150	CB-150	785988015931	150ft, #14 low energy cable, Soft jacket		●			6.0	EA	
CB75	CB-75	785988015924	75ft, #14 low energy cable, Soft jacket		●			4.0	EA	
COAB	CO-AB	785988015757	Cone, Antique bronze, 1.5w LED, 12V, Complete kit: Connector, spike & deck mounts, and 4ft fixture cable		●			2.0	EA	
ELAB	EL-AB	785988015870	Eyelid, Antique bronze, 1.5w LED, 12V, 6ft fixture cable & connector	●	●	●		1.0	EA	
FLAB	FL-AB	785988015900	Flood, Antique bronze, 3w LED, 12V, Complete kit: Connector, spike & deck mounts, and 4ft fixture cable	●	●	●	●	2.0	EA	
GNAB	GN-AB	785988015771	Greenville, Antique bronze, 1.5w LED, 12V, Complete kit: Connector, spike & deck mounts, and 4ft fixture cable		●			2.8	EA	
LVT56	LVT56	785988015917	Power center, 120-to-12V, 56w max, 3ft grounded cord set, Photocontrol and multiple settings, Non-metallic housing		●	●		4.0	EA	
RDAB	RD-AB	785988015832	Reidville, Antique bronze, 1.5w LED, 12V, Complete kit: Connector, spike & deck mounts, and 4ft fixture cable	●				3.3	EA	
REPT	RE-PT	785988015894	Recessed uplight, Pewter, 3w LED, 12V, 4ft fixture cable & connector		●	●		1.5	EA	
SAPT	SA_PT	785988015825	Saturn, Pewter, 1.5w LED, 12V, Complete kit: Connector, spike & deck mounts, and 4ft fixture cable			●		2.8	EA	



RU Recessed Uplights

3 SCHEDULED
STOCK
SHIPMENTS

Regional Distribution Center Stock List

Part Number	Catalog Number	UPC Code	Description	CA 03	IL 06	PA 10	SC 07	Wt. each	Ctn. Qty.	Price
RU100G	RU100G	785988015627	Guard, Non-metallic lens protection for RU100, Bronze	●				3.0	EA	
RU100P8	RU100P8	785988015603	Non-metallic recessed uplight, 100w PS, Quad-Tap, Bronze, with Lamp	●				14.5	EA	
RU100WW	RU100WW	785988015641	Lamp shield, Wall wash, Internal mount for RU100	●				1.0	EA	
RU70G	RU70G	785988015610	Guard, Non-metallic lens protection for RU70, Bronze	●				2.0	EA	
RU70P8	RU70P8	785988015597	Non-metallic recessed uplight, 70w PS, Quad-Tap, Bronze, with Lamp	●				10.0	EA	
RU70WW	RU170WW	785988015634	Lamp shield, Wall wash, Internal mount for RU70	●				1.0	EA	



PAR Lampholders

35 SCHEDULED STOCK SHIPMENTS Regional Distribution Center Stock List

Part Number	Catalog Number	UPC Code	Description	CA 03	IL 06	PA 10	SC 07	Wt. each	Ctn. Qty.	Price
103	103	785988202102	Lampholder, Natural aluminum, 150w max PAR 38, Wet location	●	●			1.0	EA	
103-7	103-7	785988202195	Lampholder, Gray, 150w max PAR 38, Wet location	●	●			1.3	EA	
10371	103-71	785988465767	Shielded lampholder, Bronze, 150w max PAR 38, Wet location				●	1.0	EA	
10372	103-72	785988202249	Shielded lampholder, Black, 150w max PAR 38, Wet location		●			1.0	EA	
306	306	785988204069	Lampholder, Gray, 300/500w PAR56 end prong lamp by others, Wet location	●				3.0	EA	
30813M	308-13-M	785988204588	Bullet lampholder, Green, 150w max PAR/BR40, Down aiming	●				2.3	EA	
30913ML	309-13-ML	785988309139	Bullet lampholder, Green, 175w max PAR/BR40, Univ. aiming	●				4.0	EA	
30914ML	309-14-ML	785988205110	Bullet lampholder, Black, 175w max PAR38/BR40, Univ. aiming	●				4.0	EA	
309M51ML	309-M51-ML	785988781010	Bullet lampholder, Bronze, 175w max PAR38/BR40, Univ. aiming	●	●		●	3.0	EA	
309M54ML	309-M54-ML	785988465781	Bullet lampholder, White, 175w max PAR/BR40, Univ. aiming	●				3.0	EA	
309ML	309-ML	785988205004	Bullet lampholder, Gray, 175w max PAR38/BR40, Univ. aiming	●				3.0	EA	
309VGML	309-VG-ML	785988204885	Bullet lampholder, Verdi Green, 175w PAR 38/BR40, Univ. aiming	●				2.0	EA	
S302	S-302	785988473854	Slip-fitter, Pole top, 1/2" Hub, 2 3/8" Slip fit, Gray		●			1.0	EA	
S302M51	S-302-M51	785988473861	Slip-fitter, Pole top, 1/2" Hub, 2 3/8" Slip fit, Bronze		●			1.0	EA	



Photo Controls

35 SCHEDULED STOCK SHIPMENTS Regional Distribution Center Stock List

Part Number	Catalog Number	UPC Code	Description	CA 03	IL 06	PA 10	SC 07	Wt. each	Ctn. Qty.	Price
PBT1	PBT-1	785988260119	Photo control, 120V, Button type	●	●	●	●	0.5	EA	
PBT234	PBT-234	785988260157	Photo control, 208/240/277V, Button type	●	●	●	●	0.5	EA	



Motion Sensors/ Kits

35 SCHEDULED STOCK SHIPMENTS Regional Distribution Center Stock List

Part Number	Catalog Number	UPC Code	Description	CA 03	IL 06	PA 10	SC 07	Wt. each	Ctn. Qty.	Price
MOW	MO-W	785988466412	Motion sensor only, 500w, 120V, 130° sensor range, White	●			●	1.0	EA	
SOW	SO-W	785988466306	Motion sensor only, 500w, 120V, 270° sensor range, White	●	●			1.5	EA	