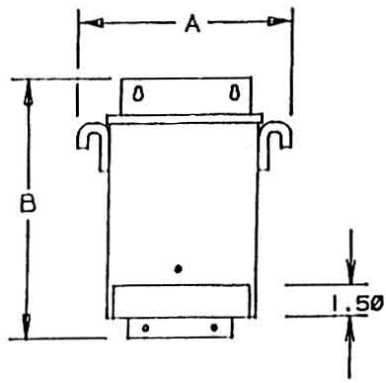
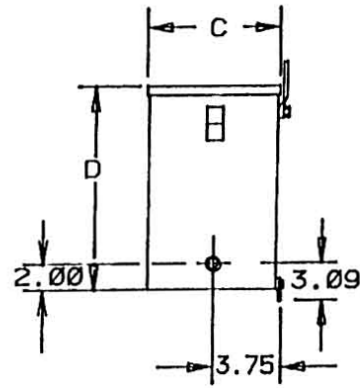


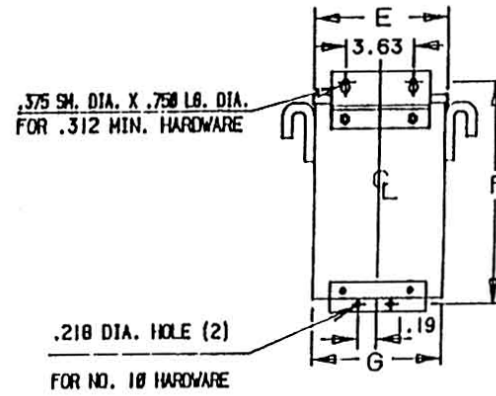
Revisions



FRONT

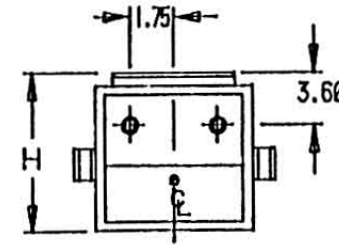
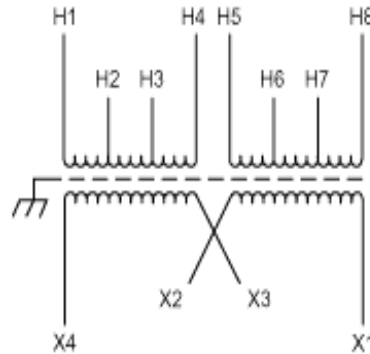


SIDE



BACK

Primary Volts	Connect Primary Lines To	Inter-Connect	Connect Secondary Lines To
252	H1-H8	H1 to H5 H4 to H8	
240	H1-H7	H1 to H5 H3 to H7	
228	H1-H6	H1 to H5 H2 to H6	
504	H1-H8	H4 to H5	
492	H1-H8	H3 to H5	
480	H1-H7	H3 to H5	
468	H1-H7	H2 to H5	
456	H1-H6	H2 to H5	
Secondary Volts			
240		X2 to X3	X1-X4
120/240		X2 to X3	X1-X2-X4
120		X1 to X3 X2 to X4	X1-X4



BOTTOM



Type No.

KVA	CATALOG NUMBER	VOLTAGE		WIRING DIAGRAM	WEIGHT	PHASE	FREQ.
		HIGH	LOW				
3.0	T-2-53013-SS	240 x 480	120/240		55 Lbs	1	60 Hz

TYPICAL PERFORMANCE DATA

Winding Rise	115°C	Regulation @ 100% PF	IMPEDANCE	Typical Efficiency	
Insulation	180°C			Full Load Losses	
Sound Level	45 dB			No Load Losses	

316 - STAINLESS STEEL

A	B	C	D	E	F	G	H
10.31	12.50	6.65	10.19	7.81	11.50	7.68	7.13

A

PRINTS TO

CONTROL 7