

STAINLESS STEEL STRUT & FOOD GRADE CHANNEL ACCESSORIES (Type 316SS)

4-Hole Flat Angle Plate	
Hole Diameter	Part Number
9/16"	S600004BF0



4-Hole Splice Plate	
Hole Diameter	Part Number
9/16"	S60000PL4S



3-Hole Flat Angle Plate	
Hole Diameter	Part Number
9/16"	S600003BF0



Cross Plate	
Hole Diameter	Part Number
9/16"	S60000PLCR



Tee Plate	
Hole Diameter	Part Number
9/16"	S60000PLTE



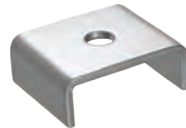
4-Hole Angle Bracket	
Hole Diameter	Part Number
9/16"	S600004B00



2-Hole Angle Bracket	
Hole Diameter	Part Number
9/16"	S600002B00



Saddle Washers	
Hole Diameter	Part Number
3/8"	S60300STSW
1/2"	S60500STSW
5/8"	S60600STSW



Channel Nuts with Spring	
Hole Diameter	Part Number
1/4"-20"	S60000CN11
3/8"-16"	S60000CN31
1/2"-13"	S60000CN41
5/8"-11"	S60000CN51
3/4"-10"	S60000CN61



U-Fitting	
Hole Diameter	Part Number
Fits 1-5/8" channel holes - 9/16" dia.	S60000UF00



Wall Spacers	
Type	Part Number
Standard	S60000WS00
Heavy Duty	S60000WSHD



L-Bracket	
Part Number	
S60000BRLO	



Hanger Rod	
Part Number	
S60000HR00	

