

## FWZ Series AC Hour Meters

The FWZ Series AC Hour Meters are non-resetable and flush-panel mounted with watertight/dusttight sealed bezels. All models are black plastic (except FWZ72B which is blue-silver on colorless frosted polycarbonate) with white numerals on black background. Tenths and hundredths numerals are yellow.

### Ratings

#### FWZ53 Series

Bezel:	2.09" x 1.02" (36 mm x 24 mm)
Capacity:	99,999.99 hours
Digits:	0.16" high numerals
Voltage:	24, 120, 220 VAC, 50 or 60 Hz models
Operating Temperature:	-40°F to 160°F (-40°C to 72°C)
Termination:	Combination ¼" spade and screw clamp
Weight:	1.2 oz
Mounting:	Flush-panel retainer mounted (2) 0.150" holes for #6 screws
Panel Opening:	1.50" x 1.00" rectangular (38 x 25 mm)
Ordering Information:	FWZ53 - voltage/frequency

#### FWZ55 Series

Bezel:	2.36" x 1.36" (60 mm x 34.5 mm)
Capacity:	99,999.99 Hours
Voltage:	24, 120, 220 VAC, 50 or 60 Hz
Digits:	0.16" high numerals
Operating Temperature:	-40°F to 160°F (-40°C to 72°C)
Termination:	Combination ¼" spade and screw clamp Rear access screw terminals available (model "K")
Weight:	1.8 oz
Mounting:	Flush-panel retainer mounted with slip-on plastic retaining bracket
Panel Opening:	2.06" x 1.08" rectangular (52 mm x 27.5 mm)
Ordering Information:	1.) FWZ55 - voltage/frequency 2.) FWZ55K* - voltage/frequency *Rear access screw terminals

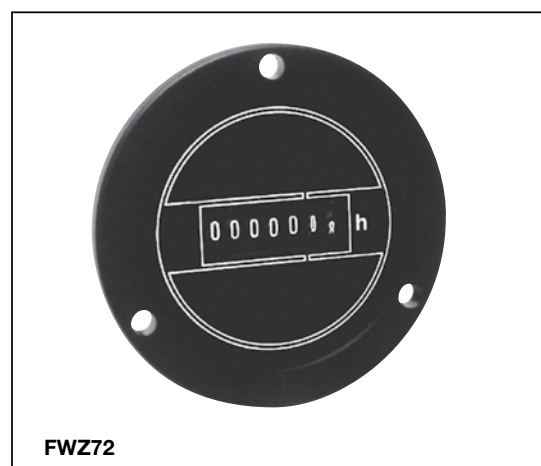
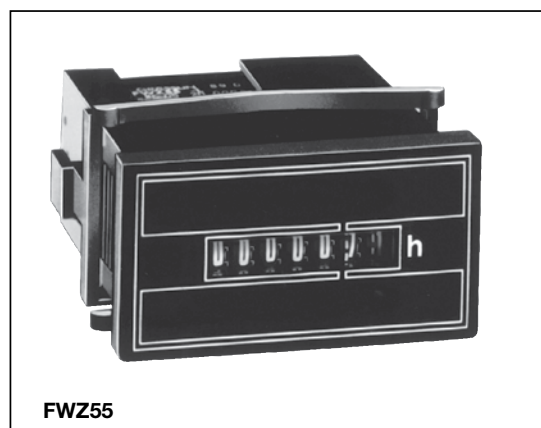
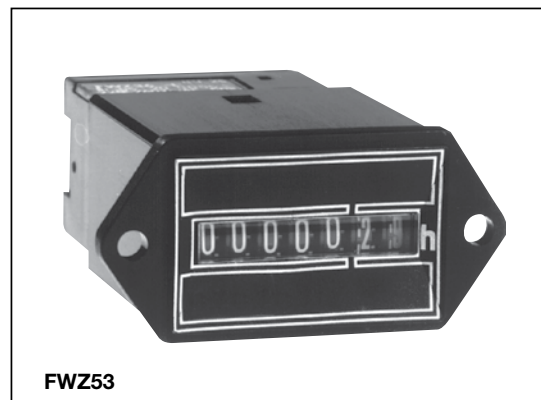
Project: \_\_\_\_\_

Location: \_\_\_\_\_

Product Type: \_\_\_\_\_

Contact/Phone: \_\_\_\_\_

Model #: \_\_\_\_\_

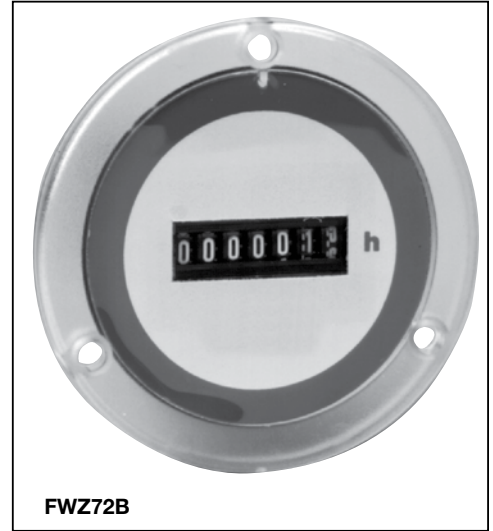


#E22587

#151753

## FWZ72 Series

Bezel:	2.83" round (72 mm), 3 hole
Capacity:	99,999.99 Hours
Digits:	0.16" high numerals
Voltage:	24, 120, 240 VAC, 50 or 60 Hz
Power Consumption:	1VA
Operating Temperature:	-40°F to 160°F (-40°C to 72°C)
Termination:	Combination ¼" spade and screw clamp Rear access screw terminals available (model "K")
Weight:	1.8 oz
Mounting:	Flush panel mounted with three 0.185" holes for #8 screws
Panel Opening:	1.75" round (44.5 mm) or 1.50"x 1" rectangular (38 mm x 24 mm)
Ordering Information:	1.) FWZ72-voltage/frequency 2.) FWZ72B-voltage/frequency 3.) FWZ72K*-voltage/frequency *Rear access screw terminals



## Diagrams

