

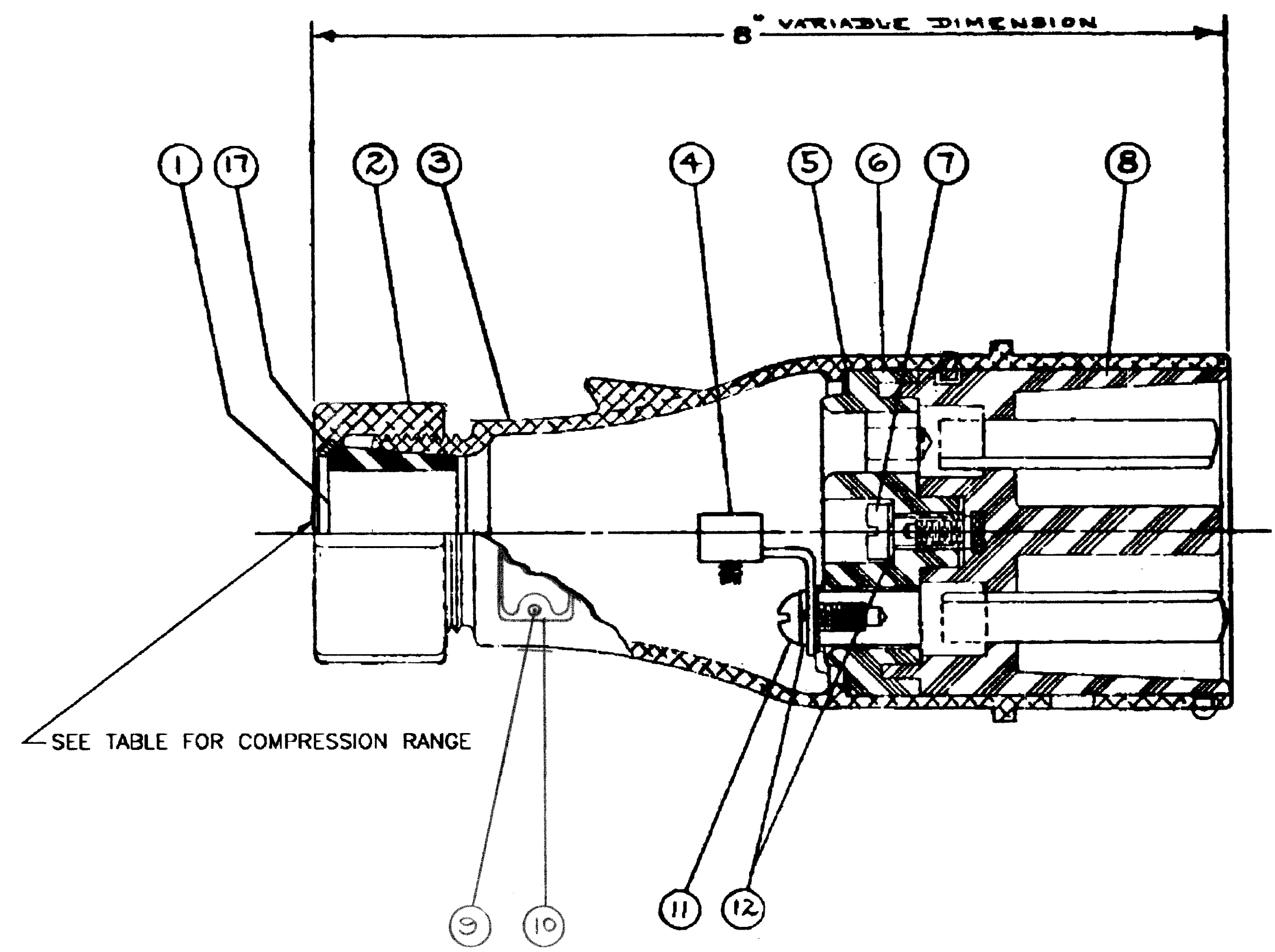
4

3

2

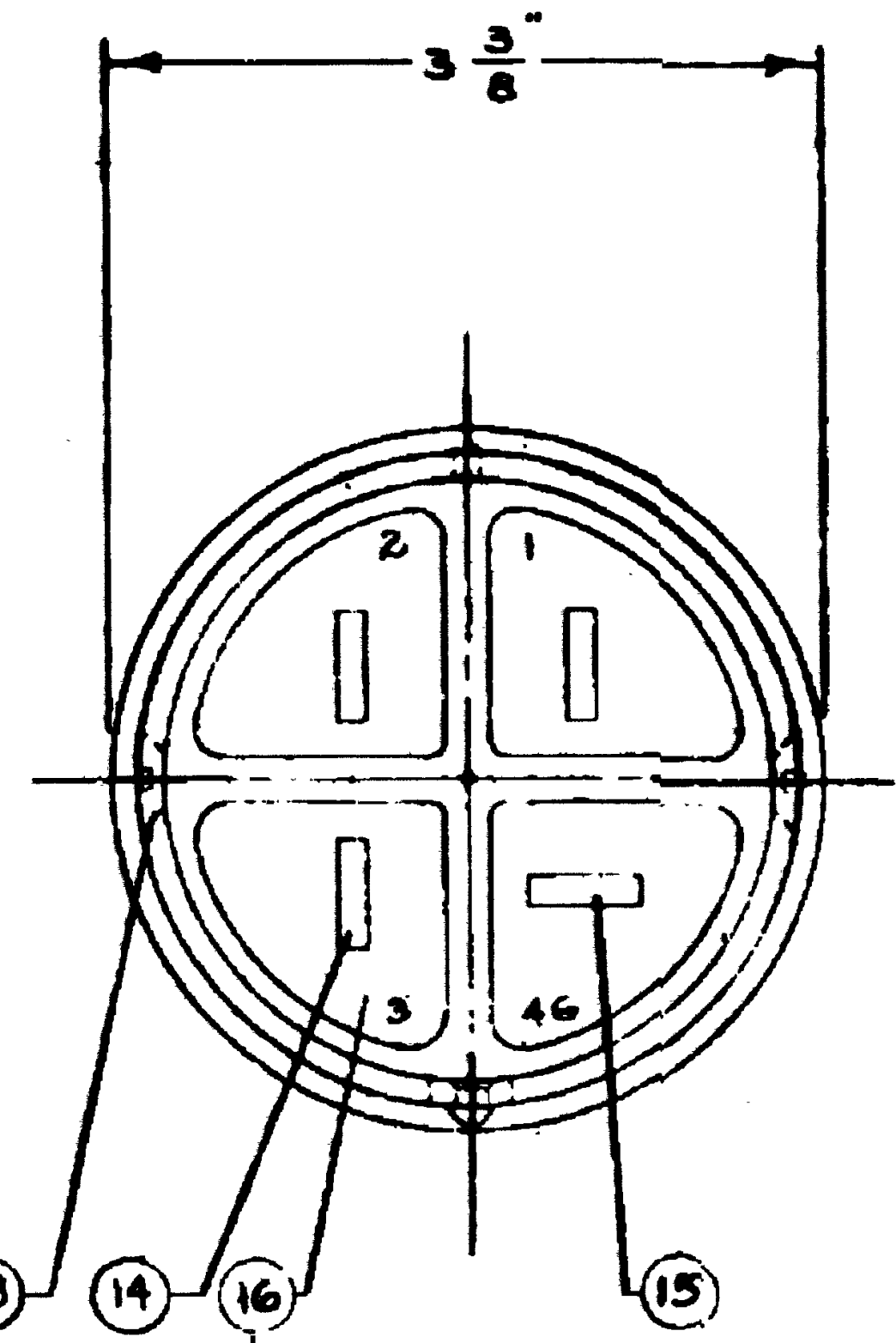
1

REVISIONS			
REV	DESCRIPTION	DATE	APPR
A	NEW RELEASE	11-1-03	JT



SEE TABLE FOR COMPRESSION RANGE

QUANTITY	PART NUMBER	COMPRESSION RANGE
1	ZP-6316-18C	1.000" TO 1.125"
1	ZP-6316-20C	1.125" TO 1.250"
1	ZP-6316-22C	1.250" TO 1.375"



CONSISTS OF ITEMS 6,7,8,12,14, AND 15

QUANTITY	PART NUMBER	DESCRIPTION	ITEM
1	ZP-8016-20E	ANTI-FRICTION WASHER	17
1	JP-475-J-CNR	INSULATION AND CONTACTS	16
1	JP-22-Y	GROUND CONTACT	15
3	JP-22-C	CONTACT	14
2	100806	1/4"-20 X 3/8" FH BRS MACH SCR	13
2	101254	1/4" X 3/32" X 3/64" LOCKWASHER	12
1	100490	1/4"-20 X 1/2" RD HD BRS MACH SCR	11
1	JR-109-K	NAME PLATE	10
2		NO. 0X 1/8" LONG PARK. KALON DRV. SC.	9
1	JP-42-A-CNR	INSULATION	8
1	JR-42-AD	SCREW	7
1	JR-42-B-CNR	INSULATION CAP	6
1	JP-32-GJ	GROUND RING ASSY	5
1	JP-70	LUG	4
1	JP-6036-Y	HANDLE	3
1	ZP-7316-10A0	NUT	2
1	SEE NOTES	GROMMETS	1

MATERIALS LIST

UNLESS OTHERWISE SPECIFIED		SIGNATURES		DATE	
1) All dimensions are in inches.		DRAWN: N.TAHMASBI		11-1-03	
2) Tolerances are as follows:		CHECKED: J.THOMAS		11-1-03	
1 PL DEC ±0.05 Fractions ±1/64		ENG APPR: J.THOMAS		11-1-03	
2 PL DEC ±0.01 Angles ±1°		MAT'L APPR:			
3 PL DEC ±0.005					
3) Fabrication Standards Per: S5-20020					
4) Note Reference = A					
MATERIAL SPECIFICATIONS: SEE B/M ABOVE					
FINISH SPECIFICATIONS:					
SUPERSEDES DWG NO. 117B1-C DATED 10-3-55					

AMPHENOL AEROSPACE INDUSTRIAL OPERATIONS SAN DIEGO, CALIFORNIA			
PLUG ASSEMBLY			
SIZE	FSCM NO.	PART NO.	REVISION
C	49367	JPD-116046-CNR	A
SCALE: NONE	REF: JPD-116046-CNR	SHEET 1	OF 1

1. GROMMETS SUPPLIED FOR CUSTOMERS CHOICE

NOTE: UNLESS OTHERWISE SPECIFIED

TITLE: PLUG ASSEMBLY PART NO: JPD-116046-CNR REV: A SHEET 1 OF 1

4

3

2

1