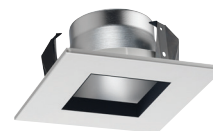


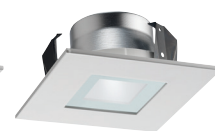


Square Trims for Standard Juno® 4" Housings

Stylish square trims are now available for standard Juno 4", recessed, line- and low-voltage housings. These attractive new trims are constructed of high-quality, die-cast aluminum and are offered with a wide variety of options. Trims for line-voltage housings are available in downlight, pinhole, and lensed styles and are compatible with various Juno IC- and TC-Rated housings, including those designed for LEDs. Trims for low-voltage housings feature downlight, pinhole and lensed styles, as well as an adjustable, flush gimbal that provides 35° of vertical aiming. All of the trims feature push-in springs for simple installation and perfect alignment. Juno 4" square trims are the ideal way to update your residential or commercial ceiling with a stylish new look.



Downlight



Frosted Lens
with Clear Center



Pinhole



Adjustable

JUNO®

Juno® 4" Square Trims

Square trims for standard Juno 4", line- and low-voltage housings offer designer-grade style for both residential and light-commercial applications. Downlight and pinhole trims have a black insert that minimizes glare at the aperture, while lensed trims feature a perimeter-frosted square glass lens. A flush-gimbal trim offering 35° adjustment and easy re-lamping is available for various low-voltage housings and line voltage housings when used with a GU10WHIP accessory.

Line Voltage

Downlight



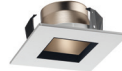
17SQ HZWH
Haze Reflector,
White Trim



17SQ WWH
White Reflector,
White Trim



17SQ BWH
Black Reflector,
White Trim



17SQ WHZWH
Wheat Haze Reflector,
White Trim

Housing/Lamp Compatibility

IC1/IC1 W/IC1 S: 50W PAR20 (Requires T599 socket extender), 39W PAR20, 30W R20
IC1P/TC1/TC1 S/TC1R: 50W PAR20, 50W R20
ICPL/PL4 26W Series: 26W
ICPL/PL4 18W Series: 18W
IC1LED/IC1RLED and IC1LED WD/IC1RLED WD Series

Pinhole



13SQ WH
White Trim

IC1/IC1W/IC1 S: 39W PAR20 (Requires T599 socket extender), 35W PAR20, 30W R20
IC1P: 50W PAR20, 30W R20
TC1/TC1 S/TC1R: 50W PAR20, 50W R20
ICPL/PL4 26W Series: 26W
ICPL/PL4 18W Series: 18W
IC1LED/IC1RLED and IC1LED WD/IC1RLED WD Series

Lensed



12SQ WWH
Perimeter Frosted Lens, White Trim

IC1/IC1 W/IC1S: 50W PAR20 (Requires T599 socket extender), 30W R20
IC1P/TC1/TC1R: 50W PAR20, 50W R20
ICPL/PL4 26W Series: 26W
ICPL/PL4 18W Series: 18W
IC1LED/IC1RLED and IC1LED WD/IC1RLED WD Series

Adjustable



440SQ WH
White Trim



440SQ BL
Black Trim

IC1/IC1 W/IC1 S: 35W MR16 120V GU10 Base for use with GU10WHIP
IC1P/TC1/TC1 S/TC1R: 50W MR16 120V GU10 Base for use with GU10WHIP

Low Voltage

Downlight



447SQ HZWH
Haze Reflector, White Trim



447SQ BWH
Black Reflector, White Trim



447SQ WHZWH
Wheat Haze Reflector, White Trim

IC44N/IC44N W/IC44N S/TC44/TC44 V/TC44 S/TC44R: 50W MR16

Pinhole



443SQ WH
White Trim

IC44N/IC44N W/IC44N S/TC44/TC44 V/TC44 S/TC44R: 50W MR16

Lensed



441SQ WWH
Perimeter Frosted Lens, White Trim

IC44N/IC44N W/IC44N S/TC44/TC44 V/TC44 S/TC44R: 50W MR16

Adjustable



440SQ WH
White Trim



440SQ BL
Black Trim

IC44N/IC44N W/IC44N S/TC44/TC44 V/TC44 S/TC44R: 50W MR16



©2017 Acuity Brands Lighting, Inc. The marks appearing in this catalog are trademarks of Acuity Brands Lighting, Inc. Products shown in this brochure may be covered by U.S. and international patents and patents pending. Specifications subject to change without notice. Printed in the U.S.A.