



Juno®

Recessed LED downlights with WarmDim® technology

Ultra-efficient, high-performance LED downlights offering the warmth and ambiance of incandescent dimming


JUNO LIGHTING GROUP
an AcuityBrands company



Juno WarmDim[®] LED downlights

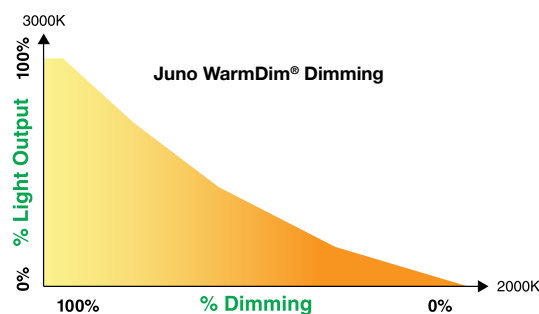
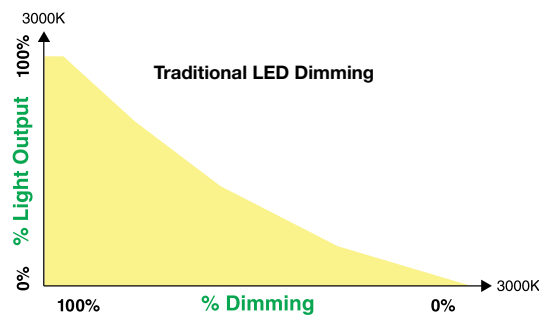
Setting the mood with exceptionally accurate, high-performance illumination

Juno WarmDim technology (Patent US 8,710,754) has taken LED downlighting in an exciting new direction. This patented innovation warms LED color temperatures during dimming, recreating the warm glow of incandescent dimming, while offering extraordinary energy efficiency and service life.

Now, WarmDim technology is available throughout an expanded range of Juno high-performance LED downlights. These fixtures feature exceptionally accurate color rendering in excess of 90 CRI. They are also incredibly efficient, consuming as little as 20% of the energy of incandescents and about half the energy of CFLs. Rated service life is a remarkable 50,000 hours at 70% lumen maintenance.

A technological breakthrough

Juno WarmDim technology brings atmosphere and romance to the world of LED lighting. Unlike traditional LED dimming, WarmDim downlights warm as they dim, creating an ambiance previously exclusive to incandescent dimming. The proprietary micro-processor controlled light engine dims continuously from 3000K CCT at full luminance, down to the warm glow of 2000K. From residential dining rooms to hospitality guest rooms, now you can match the mood to every occasion.



The Juno WarmDim[®] LED family



600 and 900 lumen LED downlights

Juno LED IC-rated downlights with the WarmDim feature are available with 600 or 900 brilliant lumens, and new construction or remodel housings. Aperture sizes include 4-, 5-, and 6-inch diameters and are offered with open, lensed, and wall wash trims. These ultra-efficient downlights consume as little as 12 watts, producing industry-leading efficacies for their category.



600 lumen retrofit LED trim modules

Juno LED retrofit modules with the WarmDim feature produce 600 brilliant lumens and are available with downlight or adjustable eyeball trims. This is the fast, affordable way to update existing fixtures to ultra-efficient, high-performance LED illumination. They are compatible with most 6-inch medium base housings and offer an all-in-one design that is the model of installation simplicity.



900 lumen slope ceiling LED downlights

Juno slope ceiling LED downlights with the WarmDim feature are designed specifically for sloped ceiling applications. They are available in either standard or super slope configurations and produce a brilliant 900 lumens to accommodate higher ceilings. These ultra-efficient, IC-rated, 6-inch LED luminaires are the perfect complement to today's contemporary decors.







Juno WarmDim® LED Downlights

Juno LED IC-rated downlights with WarmDim technology deliver ultra-efficient, high-performance illumination while capturing the warm glow and ambiance of incandescent dimming. Juno WarmDim 600 lumen and 900 lumen downlights are offered in 4-, 5- and 6- inch apertures. The 600 lumen downlights consume just 12 watts, while the 900 lumen downlights consume between 15 and 18 watts. All WarmDim downlights use far less energy than any comparable light sources and last dramatically longer.



4" WarmDim® LED Downlights

New Construction



Remodel



5" WarmDim® LED Downlights

New Construction

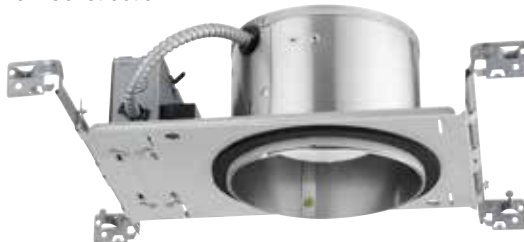


Remodel



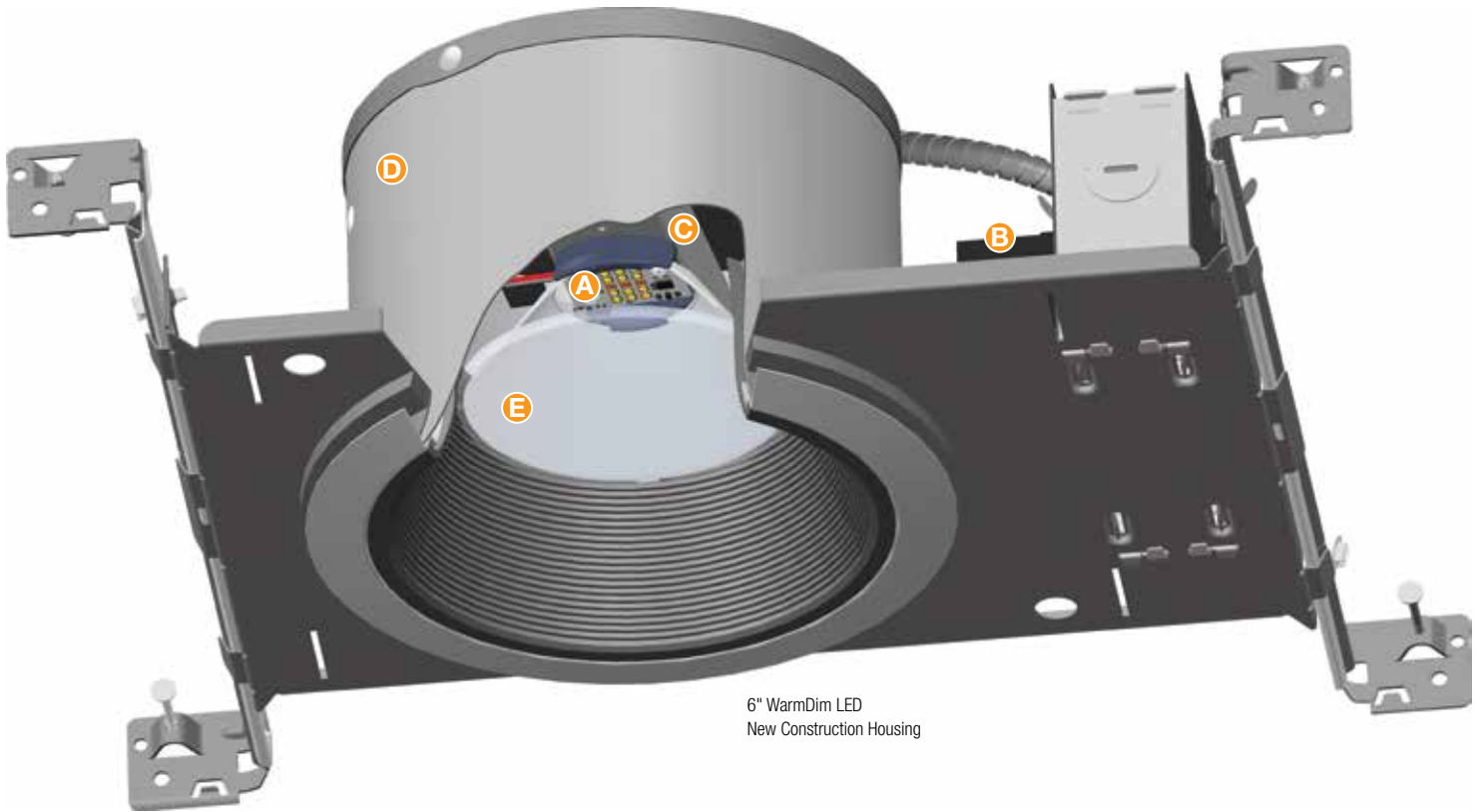
6" WarmDim® LED Downlights

New Construction



Remodel





6" WarmDim LED
New Construction Housing

- A.** Proprietary patented WarmDim LED light engine features micro-processor controlled dimming that replicates the warmth of incandescent dimming. Dims from 3000K CCT at full lumen output to a warm 2000K while maintaining 90 minimum CRI throughout the dimming range (Patent US 8,710,754).
- B.** Dedicated 120-volt LED driver is compatible with readily available incandescent, magnetic low-voltage, and electronic low-voltage dimmers.
- C.** Effective thermal management is achieved by integrating the light engine into a thermally conductive housing that provides uninterrupted heat transfer for remarkable LED longevity. Service life is rated at 50,000 hours with 70% lumen maintenance and no perceptible color shifts.

- D.** Low-profile housings fit easily within 2 x 6 joists to accommodate shallow installations. New construction housings are supplied with Juno Real Nail 3[®] bar hangers; an integral T-bar notch secures housings to suspended ceiling grids without the need for clips. Remodel housings also available.
- E.** High-performance optic system produces uniform light distribution and reduces glare. The reflector and high-transmission diffusing lens are computer optimized for each aperture size, and the lens conceals the LED array, providing the aesthetic of a deeply regressed PAR lamp.



Optional Medium Flood Optic available for 5" and 6" downlights.





Juno WarmDim® LED Retrofit Trim Modules

With Juno WarmDim LED retrofit modules, you can easily and economically upgrade existing 6-inch, medium-base, recessed fixtures to ultra-efficient LED illumination. In the process, you will also be upgrading to the ultimate in dimming technology. The exclusive Juno WarmDim feature warms LED color temperature while dimming to capture the warmth and ambiance previously achieved only with incandescent dimming. Available in both downlight and adjustable eyeball styles, these IC-rated LED trim modules produce 600 brilliant lumens from just 12 watts.

All-in-one design of downlight and eyeball retrofit trim modules incorporate the LED light engine, driver, heat sink, and trim in a single unit.

6" WarmDim® LED Retrofit Downlight Trim



Trim Inserts

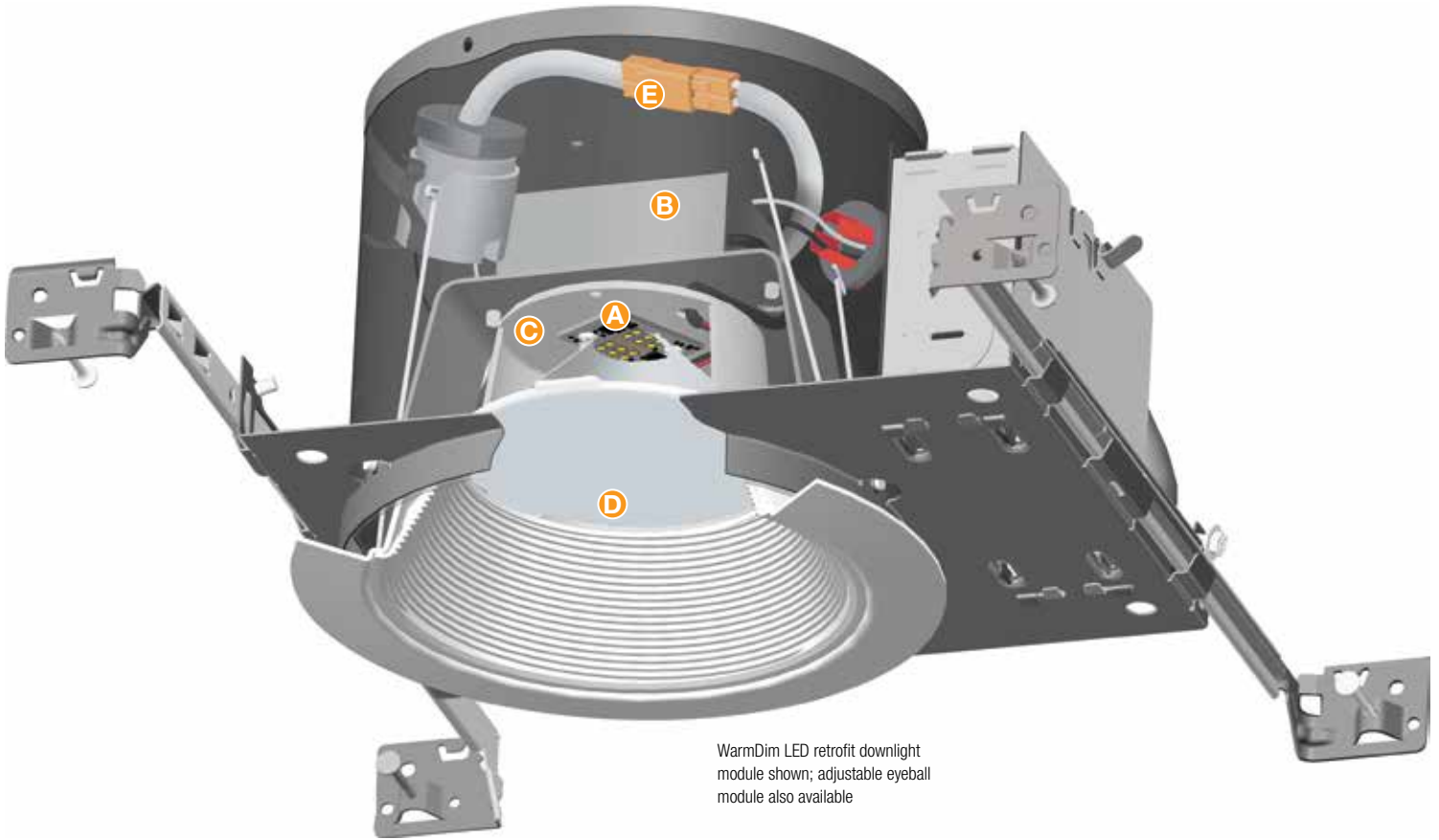
Interchangeable trim inserts can be easily changed in the field to customize the look of the trim module.



6" WarmDim® LED Retrofit Eyeball Trim



Eyeball trim provides 358° rotation, 30° vertical aiming, and is offered with standard wide-flood beam spread optic. A medium-flood optic is also available.



WarmDim LED retrofit downlight module shown; adjustable eyeball module also available

- A.** Proprietary patented WarmDim LED light engine features micro-processor controlled dimming that replicates the warmth of incandescent dimming. Dims from 3000K CCT at full lumen output to a warm 2000K while maintaining 90 minimum CRI throughout the range. (Patent US 8,710,754)
- B.** Dedicated 120-volt LED driver is compatible with most incandescent, magnetic, and electronic low-voltage wall box dimmers.

- C.** Effective thermal management is achieved by integrating the LED array with a one-piece high purity aluminum, thermally conductive trim to provide uninterrupted heat transfer. Ensures long life of the LEDs even when covered with insulation. At the end of their 50,000 hour rated life, the LEDs can be expected to produce 70% of their initial light output with no perceptible changes in color.

- D.** High-efficiency optic system features a computer-optimized reflector and high-transmission diffusing lens that provides uniform light distribution and effective glare control while concealing the LED array.

- E.** Whip adapter with screw base and quick connect plug speeds installation into 6-inch, medium-base, recessed housings.

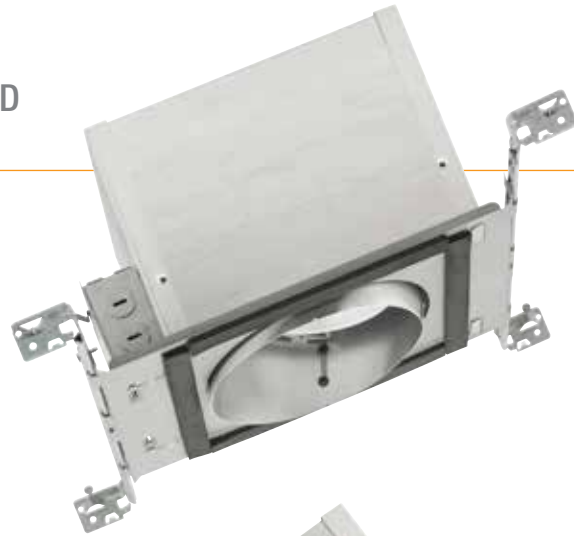




Juno WarmDim® LED Slope Ceiling Downlights

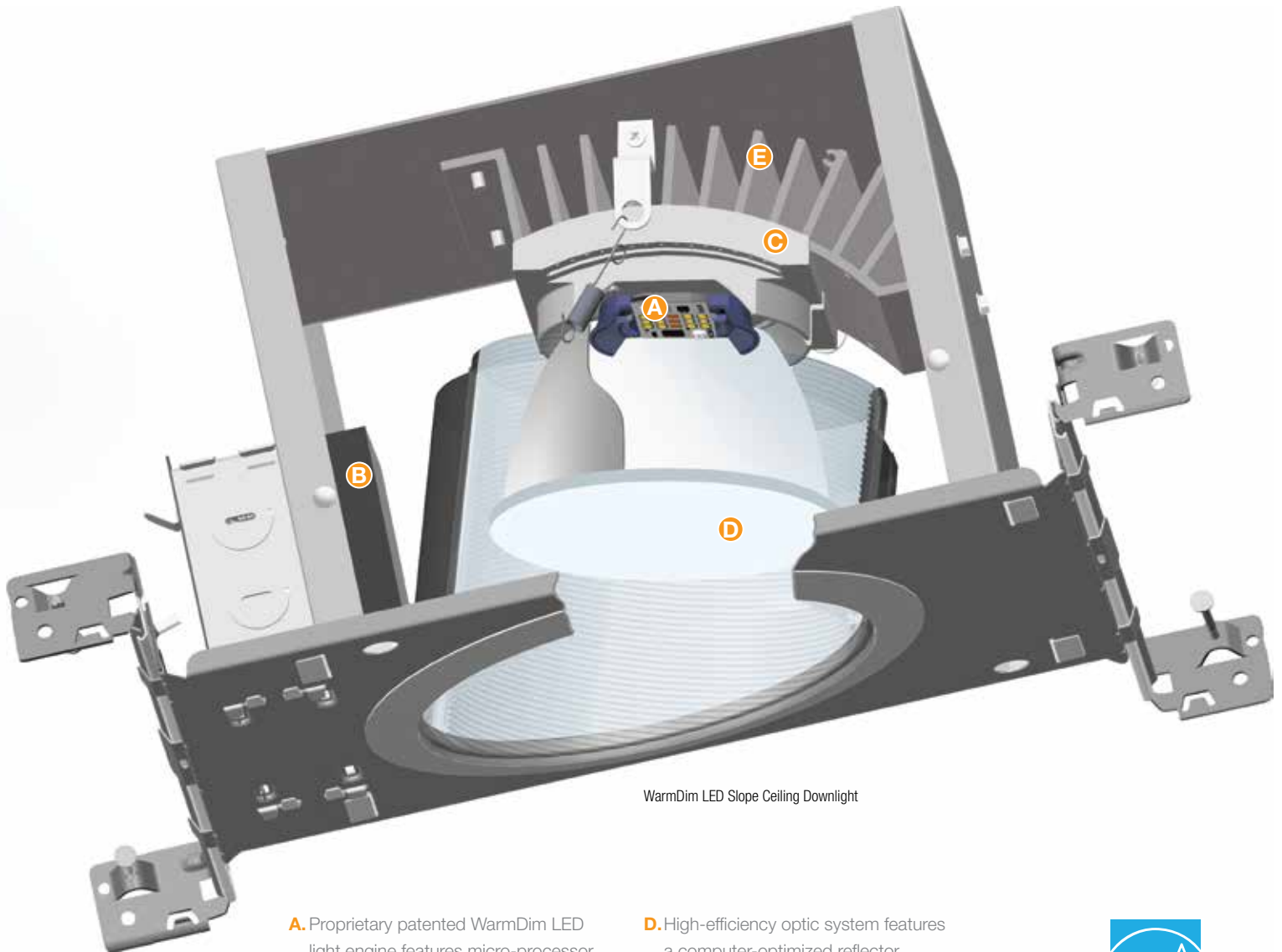
Juno slope and super-slope LED downlights were the industry's first recessed LED luminaires designed specifically for slope ceiling installations. Now, these 6-inch, IC-rated downlights are available with Juno WarmDim technology, providing the warmth and atmosphere of incandescent dimming while offering the energy efficiency and longevity of LED fixtures. They produce a brilliant 900 lumens from just 18 watts and are offered with open or lensed trims for new construction applications. Juno standard slope LED downlights accommodate ceilings with 2/12 to 6/12 pitch (9° to 27°); super-slope accommodates 7/12 to 12/12 pitch (30° to 45°).

**6" WarmDim® LED
Slope Ceiling**



**6" WarmDim® LED
Super Slope Ceiling**





WarmDim LED Slope Ceiling Downlight

- A.** Proprietary patented WarmDim LED light engine features micro-processor controlled dimming that replicates the warmth of incandescent dimming. Dims from 3000K CCT at full lumen output to a warm 2000K while maintaining 90 minimum CRI throughout the range. (Patent US 8,710,754)
- B.** Dedicated 120-volt LED driver is compatible with readily available incandescent, magnetic low-voltage, and electronic low-voltage dimmers.
- C.** Adjustable slider plate enables the LED light engine and reflector to be positioned perpendicular to the floor throughout the pitch range and includes 1/4-inch adjustment indicators for consistent fixture-to-fixture alignment.
- D.** High-efficiency optic system features a computer-optimized reflector and high-transmission diffusing lens that conceals the LEDs and produces uniform aperture luminance. Specifically designed for slope applications, the reflector provides optimum performance and obscures housing internals regardless of pitch angle.
- E.** Superior thermal management is achieved by integrating the extruded aluminum heat sink and cast aluminum slider plate directly into the housing, assuring remarkable LED longevity. Service life is rated at 50,000 hours with 70% lumen maintenance.



4" WarmDim® IC1LWDG4N and IC91LWDG4 Series (New Construction)



Dedicated LED, Air-Loc® sealed new construction housing with patented WarmDim® technology. LED color temperature warms while dimming to emulate the dimming performance of traditional incandescent light sources. Double wall, shallow housing construction allows for fit in 2 x 6 construction. Can be completely covered with insulation. Fully sealed housing stops infiltration and exfiltration of air, reducing heating and air cooling costs without the use of additional gaskets. LED housing is designed to provide 50,000 hours of life and is compatible with many standard Juno trims. 5 year limited warranty on LED components.

New Construction
12¼" L x 6¾" W x 6" H
Ceiling cutout: 4½"

Example: IC1LWDG4N- 3K-1

Lumen Package	Housing	Color Temp.	Input Voltage
600 Lumen 900 Lumen	IC1LWDG4N IC91LWDG4	3K 3000K	1 Dedicated 120V Only (forward phase and ELV dimming)

4" WarmDim® IC1RLWDG4N and IC91RLWDG4 Series (Remodel)



Dedicated LED, Air-Loc® remodel housing with patented WarmDim® technology. LED color temperature warms while dimming to emulate the dimming performance of traditional incandescent light sources. Shallow housing allows for fit in 2 x 6 construction. IC remodel housing for remodel application where back side of ceiling is not accessible. Installs through an opening in the ceiling from below. Secured in place by factory installed remodel springs. Can be completely covered with insulation. LED housing is designed to provide 50,000 hours of life and is compatible with many standard Juno trims. 5 year limited warranty on LED components.

Remodel
12½" L x 4¾" W x 4¾" H
Ceiling cutout: 4¾"

Example: IC1RLWDG4N-3K-1

Lumen Package	Housing	Color Temp.	Input Voltage
600 Lumen 900 Lumen	IC1RLWDG4N IC91RLWDG4	3K 3000K	1 Dedicated 120V Only (forward phase and ELV dimming)

Trim Finishes

ABZ Classic Aged Bronze
BL Black
SC Satin Chrome
WH White

4" LED Downlight Trims

Open Trims



Pinhole with Integral Shield
13-WH
2" Aperture



Baffle
14B-WH¹ Black Baffle
14B-SC¹ Black Baffle
14B-ABZ¹ Black Baffle
14B-BL¹ Black Baffle
14W-WH White Baffle
3¾" Aperture



Cone
17C-WH Clear Alzak®
17G-WH Gold Alzak®
17B-WH Black Alzak®
17PT-SC Pewter Alzak®
17W-WH Gloss White
17HZ-WH Haze
17WHZ-WH Wheat Haze
17WHZ-ABZ Wheat Haze
3¾" Aperture



Beveled Cylinder
4103FROST-WH
4103FROST-SC
3" Aperture



Beveled Cone
4104HZ-SC Haze
4104WHZ-ABZ Wheat Haze
3¾" Aperture



Cylinder
4150MESH-SC
2¾" Aperture

Lensed



Drop Opal
11-WH



Frosted Lens with Clear Center
12W-WH
12W-SC
12W-ABZ



Beveled Dome - Shower
4101-ABZ
4101-SC
4101-WH



Beveled Shower
4102-ABZ
4102-SC
4102-WH

Square Trims



Pinhole
13SQ-WH White Trim



Downlight
17SQ-HZ-WH Haze, White Trim
17SQ-W-WH White, White Trim
17SQ-B-WH Black, White Trim
17SQ-WHZ-WH Wheat Haze



Frosted Lens with Clear Center
12SQ-W-WH White Trim

¹ Not ENERGY STAR® rated.

ENERGY STAR® Qualification and T24 certification is dependent on trim finish. See housing spec sheet on www.junolightinggroup.com for specific information for each trim.

Example: IC1LWDG4N-3K-1 with 14W-WH Trim

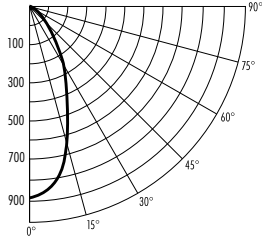
Photometric Report

Test Report #: PT09141901

Catalog No: IC1LWDG4N-3K-1
with 14W-WH Trim

Luminaire Spacing Criterion: 0.76

Luminaire LPW: 58



Candlepower Distribution
(Candelas)

Degrees Vertical	0°
0	888
5	864
15	673
25	432
35	220
45	74
55	26
65	10
75	6
85	1
90	0

Average Initial Footcandles

Multiple Units (Square Array, 60'x 60' room)

Ceiling 80%, Wall 50%, Floor 20%

Spacing	RCR1	RCR3	RCR5
4.0'	48	41	36
5.0'	31	27	23
6.0'	22	18	16
7.0'	17	15	13
8.0'	14	12	10
9.0'	11	9	8
10.0'	8	7	6

Zonal Lumen Summary

Zone	Lumens	%Lamp	%Fixture
0 - 30°	465	N/A	65.9
0 - 40°	602	N/A	85.4
0 - 60°	686	N/A	97.3
0 - 90°	705	N/A	100.0

Initial Footcandles

(One Unit, 12.1W , 49° Beam)

Distance to Illuminated Plane (Feet)	Footcandles Beam Center	Beam Diameter
4	55.5	3.6'
6	24.7	5.5'
8	13.9	7.3'
10	8.9	9.1'

Luminance (Average cd/m2)

Degrees	Average Luminance
45	16923
55	7238
65	4006
75	4026
85	2615

Example: IC91LWDG4-3K-1 with 14W-WH Trim

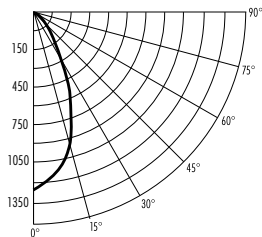
Photometric Report

Test Report #: PT09141901R

Catalog No: IC91LWDG4-3K-1
with 14W-WH Trim

Luminaire Spacing Criterion: 0.76

Luminaire LPW: 62



Candlepower Distribution
(Candelas)

Degrees Vertical	0°
0	1172
5	1141
15	889
25	570
35	290
45	97
55	34
65	14
75	8
85	2
90	0

Average Initial Footcandles

Multiple Units (Square Array, 60'x 60' room)

Ceiling 80%, Wall 50%, Floor 20%

Spacing	RCR1	RCR3	RCR5
4.0'	64	55	48
5.0'	41	35	31
6.0'	28	24	27
7.0'	23	20	17
8.0'	18	16	14
9.0'	14	12	10
10.0'	10	9	8

Zonal Lumen Summary

Zone	Lumens	%Lamp	%Fixture
0 - 30°	614	N/A	65.9
0 - 40°	795	N/A	85.4
0 - 60°	905	N/A	97.3
0 - 90°	931	N/A	100.0

Initial Footcandles

(One Unit, 15W , 49° Beam)

Distance to Illuminated Plane (Feet)	Footcandles Beam Center	Beam Diameter
4	73.3	3.6'
6	32.6	5.5'
8	18.3	7.3'
10	11.7	9.1'

Luminance (Average cd/m2)

Degrees	Average Luminance
45	22338
55	9554
65	5289
75	5314
85	3452

Fixtures tested to IES recommended standard for solid state lighting per LM-79-08. Photometric performance on a single unit represents a baseline of performance for the fixture. Results may vary in the field.



5" WarmDim® IC20LWDG4N and IC920LWDG4 Series (New Construction)



Dedicated LED, Air-Loc® sealed new construction housing with patented WarmDim® technology. LED color temperature warms while dimming to emulate the dimming performance of traditional incandescent light sources. Shallow housing allows for fit in 2 x 6 construction. Can be completely covered with insulation. Fully sealed housing stops infiltration and exfiltration of air, reducing heating and air cooling costs without the use of additional gaskets. LED housing is designed to provide 50,000 hours of life and is compatible with many standard Juno trims. 5 year limited warranty on LED components.

New Construction
15¼" L x 9½" W x 4⅞" H
Ceiling cutout: 5½"

Example: IC20LWDG4N-3K-1

Lumen Package	Housing	Color Temp.	Input Voltage
600 Lumen	IC20LWDG4N	3K 3000K	1 Dedicated 120V Only (forward phase and ELV dimming)
900 Lumen	IC920LWDG4		

5" WarmDim® IC20RLWDG4N Series and IC920RLWDG4 (Remodel)



Dedicated LED, Air-Loc® remodel housing with integral patented WarmDim® technology. LED color temperature warms while dimming to emulate the dimming performance of traditional incandescent light sources. Shallow housing allows for fit in 2 x 6 construction. IC remodel housing for remodel application where back side of ceiling is not accessible. Installs through an opening in the ceiling from below. Secured in place by factory installed remodel springs. Can be completely covered with insulation. When used with supplied ALG kit, stops infiltration and exfiltration of air, reducing heating and air cooling costs. LED housing is designed to provide 50,000 hours of life and is compatible with many standard Juno trims. 5 year limited warranty on LED components.

Remodel
13½" L x 5⅞" W x 4⅞" H
Ceiling cutout: 5½"

Example: IC20RLWDG4N-3K-1

Lumen Package	Housing	Color Temp.	Input Voltage
600 Lumen	IC20RLWDG4N	3K 3000K	1 Dedicated 120V Only (forward phase and ELV dimming)
900 Lumen	IC920RLWDG4		

Accessories

Catalog No.	Description
LEDOPTICG3-M	Medium Flood Optic (50°)

To order, specify catalog number

Trim Finishes

ABZ Classic Aged Bronze
SC Satin Chrome
WH White

5" LED Downlight Trims

Open Trims



Baffle
205W-WH White Baffle
205B-WH¹ Black Baffle
205B-SC¹ Black Baffle
205B-ABZ¹ Black Baffle
4⅞" Aperture



Cone
204C-WH Clear Alzak®
204G-WH Gold Alzak®
204B-WH¹ Black Alzak®
204PT-SC Pewter Alzak®
204W-WH Gloss White
204HZ-WH Haze
204WHZ-WH Wheat Haze
204WHZ-ABZ Wheat Haze
4⅞" Aperture

Wall Wash



Wall Wash
213G3W-WH White
213G3B-WH Black

Lensed Trims



Flat Glass Shower Trim*
210N-ABZ
210N-SC
210N-WH



Frosted Lens with Clear Center*
212N-ABZ
212N-SC
212N-WH



White Baffle, Regressed Frosted Dome Lens*
2130W-WH White
2130B-WH Black



Beveled Frame, Frosted Dome Lens*
5101-ABZ
5101-SC
5101-WH

¹ Not ENERGY STAR® rated.

ENERGY STAR® Qualification and T24 certification is dependent on trim finish. See housing spec sheet on www.junolightinggroup.com for specific information for each trim. * Do not use reflector shipped with trim for LED housing. Discard or recycle reflector.

Example 600 Lumen Housing: IC20LWDG4N-3K-1 with 205W-WH Trim

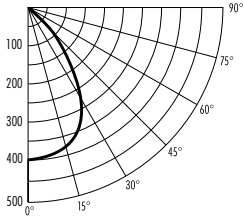
Photometric Report

Test Report #: PT09141101

Catalog No: IC20LWDG4N-3K-1 with 205W-WH Trim and standard wide flood optic

Luminaire Spacing Criterion: 1.12

Luminaire LPW: 51



Candlepower Distribution
(Candelas)

Degrees Vertical	0°
0	402
5	400
15	384
25	334
35	227
45	102
55	54
65	31
75	18
85	4
90	0

Average Initial Footcandles

Multiple Units (Square Array, 60' x 60' room)

Ceiling 80%, Wall 50%, Floor 20%

Spacing	RCR1	RCR3	RCR5
4.0'	42	34	29
5.0'	27	22	18
6.0'	19	15	13
7.0'	15	12	10
8.0'	12	10	8
9.0'	9	7	6
10.0'	7	5	5

Zonal Lumen Summary

Zone	Lumens	%Lamp	%Fixture
0 - 30°	298	N/A	47.9
0 - 40°	438	N/A	70.3
0 - 60°	569	N/A	91.3
0 - 90°	623	N/A	100.0

Initial Footcandles

(One Unit, 12.1W , 73.4° Beam)

Distance to Illuminated Plane (Feet)	Footcandles Beam Center	Beam Diameter
4	25.1	6.0'
6	11.2	8.9'
8	6.3	11.9'
10	4.0	14.9'

Luminance (Average cd/m2)

Degrees	Average Luminance
45	13638
55	8993
65	6866
75	6631
85	4025

Example 900 Lumen Housing: IC920LWDG4-3K-1 with 205W-WH Trim

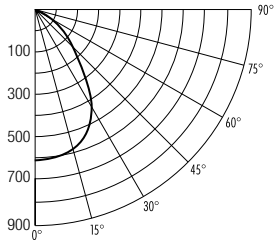
Photometric Report

Test Report #: PT02140801

Catalog No: IC920LWDG4-3K-1 with 205W-WH Trim and standard wide flood optic

Luminaire Spacing Criterion: 1.10

Luminaire LPW: 53



Candlepower Distribution
(Candelas)

Degrees Vertical	0°
0	610
5	608
15	585
25	505
35	336
45	156
55	85
65	49
75	30
85	7
90	0

Average Initial Footcandles

Multiple Units (Square Array, 60' x 60' room)

Ceiling 80%, Wall 50%, Floor 20%

Spacing	RCR1	RCR3	RCR5
4.0'	64	52	44
5.0'	41	33	28
6.0'	28	23	19
7.0'	23	19	16
8.0'	18	15	12
9.0'	14	11	10
10.0'	10	8	7

Zonal Lumen Summary

Zone	Lumens	%Lamp	%Fixture
0 - 30°	453	N/A	47.7
0 - 40°	660	N/A	69.6
0 - 60°	861	N/A	90.8
0 - 90°	948	N/A	100.0

Initial Footcandles

(One Unit, 17.8W , 72.8° Beam)

Distance to Illuminated Plane (Feet)	Footcandles Beam Center	Beam Diameter
4	38.2	5.9'
6	17.0	8.8'
8	9.5	11.8'
10	6.1	14.7'

Luminance (Average cd/m2)

Degrees	Average Luminance
45	20892
55	13986
65	10927
75	10808
85	7833

Fixtures tested to IES recommended standard for solid state lighting per LM-79-08. Photometric performance on a single unit represents a baseline of performance for the fixture. Results may vary in the field.



6" WarmDim® IC22LWDG4N and IC922LWDG4 Series (New Construction)



Dedicated LED, Air-Loc® sealed new construction housing with patented WarmDim® technology. LED color temperature warms while dimming to emulate the dimming performance of traditional incandescent light sources. Shallow housing allows for fit in 2 x 6 construction. Can be completely covered with insulation. Fully sealed housing stops infiltration and exfiltration of air, reducing heating and air cooling costs without the use of additional gaskets. LED housing is designed to provide 50,000 hours of life and is compatible with many standard Juno trims. 5 year limited warranty on LED components.

New Construction
15¼" L x 9½" W x 5½" H
Ceiling cutout: 6⅞"

Example: IC22LWDG4N-3K-1

Lumen Package	Housing	Color Temp.	Input Voltage
600 Lumen	IC22LWDG4N	3K 3000K	1 Dedicated 120V Only (forward phase and ELV dimming)
900 Lumen	IC922LWDG4		

6" WarmDim® IC22RLWDG4N and IC922RLWDG4 Series (Remodel)



Dedicated LED, Air-Loc® remodel housing with integral patented WarmDim® technology. LED color temperature warms while dimming to emulate the dimming performance of traditional incandescent light sources. Shallow housing allows for fit in 2 x 6 construction. IC remodel housing for remodel application where back side of ceiling is not accessible. Installs through an opening in the ceiling from below. Secured in place by factory installed remodel springs. Can be completely covered with insulation. When used with supplied ALG kit, stops infiltration and exfiltration of air, reducing heating and air cooling costs. LED housing is designed to provide 50,000 hours of life and is compatible with many standard Juno trims. 5 year limited warranty on LED components.

Remodel
14½" L x 7¼" W x 5⅞" H
Ceiling cutout: 6¾"

Example: IC22RLWDG4N-3K-1

Lumen Package	Housing	Color Temp.	Input Voltage
600 Lumen	IC22RLWDG4N	3K 3000K	1 Dedicated 120V Only (forward phase and ELV dimming)
900 Lumen	IC922RLWDG4		

Accessories

Catalog No.	Description
LEDOPTICG3-M	Medium Flood Optic (50°)

To order, specify catalog number

Trim Finishes

ABZ Classic Aged Bronze
BL Black
PW Plastic White
SC Satin Chrome
WH White

6" LED Downlight Trims

Open, wall wash, and lensed trims are available in an extensive selection of styles, colors, and finishes.

Open Trims



Conical
24W-WH White Baffle
24B-WH¹ Black Baffle
24B-SC¹ Black Baffle
24B-ABZ¹ Black Baffle
24B-BL¹ Black Baffle
5¾" Aperture



Conical Cone
27C-WH Clear Alzak®
27G-WH Gold Alzak®
27B-WH¹ Black Alzak®
27PT-SC Pewter Alzak®
27W-WH Gloss White
27HZ-WH Haze
27WHZ-WH Wheat Haze
27WHZ-ABZ Wheat Haze
5¾" Aperture



Octagonal
9024W-WH White Baffle
5¾" Aperture



Luminous Disc (Frosted)
9324-SC
3¾" Aperture



Chrome Band
9524-SC
5¾" Aperture



Luminous Collar (Frosted)
9702
6⅞" Aperture

Wall Wash Trims



Wall Wash
262G3W-WH White Baffle
262G3B-WH Black Baffle

Lensed Trims



Albalite
20-PW Shower/Closet Light
20-WH



Drop Opal
21-PW Shower/Closet Light
21-WH



Fresnel
22-WH



Frosted Lens*
239-WH



Frosted Lens with Clear Center
242-ABZ
242-SC
242-WH



Decorative Swirled Etched Opal Glass*
243-WH



White Baffle, Regressed Frosted Dome Lens*
2330W-WH White
2330B-WH Black



Beveled Frame, Frosted Dome Lens*
6101-ABZ
6101-SC
6101-WH

¹ Not ENERGY STAR® rated.

ENERGY STAR® Qualification and T24 certification is dependent on trim finish. See housing spec sheet on www.junolightinggroup.com for specific information for each trim. * Do not use reflector shipped with trim for LED housing. Discard or recycle reflector.

Example 600 Lumen Housing: IC22LWDG4N-3K-1 with 24WH-WH Trim

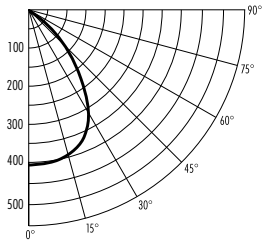
Photometric Report

Test Report #: PT08142501

Catalog No: IC22LWDG4N-3K-1 with 24W-WH Trim and standard wide flood optic

Luminaire Spacing Criterion: 1.18

Luminaire LPW: 56



Candlepower Distribution
(Candelas)

Degrees Vertical	0°
0	417
5	414
15	393
25	355
35	276
45	123
55	56
65	28
75	17
85	4
90	0

Average Initial Footcandles

Multiple Units (Square Array, 60'x 60' room)

Ceiling 80%, Wall 50%, Floor 20%

Spacing	RCR1	RCR3	RCR5
4.0'	46	37	31
5.0'	29	24	20
6.0'	20	17	14
7.0'	17	13	11
8.0'	13	11	9
9.0'	10	8	7
10.0'	7	6	5

Zonal Lumen Summary

Zone	Lumens	%Lamp	%Fixture
0 - 30°	313	N/A	45.9
0 - 40°	481	N/A	70.6
0 - 60°	630	N/A	92.6
0 - 90°	681	N/A	100.0

Initial Footcandles

(One Unit, 12.1W , 78.8° Beam)

Distance to Illuminated Plane (Feet)	Footcandles Beam Center	Beam Diameter
4	26.1	6.6'
6	11.6	9.9'
8	6.5	13.1'
10	4.2	16.4'

Luminance (Average cd/m2)

Degrees	Average Luminance
45	10312
55	5771
65	3937
75	3812
85	2591

Example 900 Lumen Housing: IC922LWDG4-3K-1 with 24WH-WH Trim

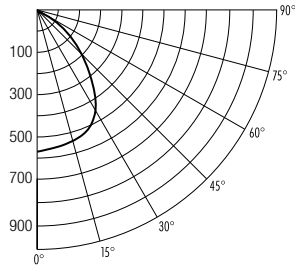
Photometric Report

Test Report #: PT02140804

Catalog No: IC922LWDG4-3K-1 with 24W-WH Trim and standard wide flood optic

Luminaire Spacing Criterion: 1.18

Luminaire LPW: 55



Candlepower Distribution
(Candelas)

Degrees Vertical	0°
0	579
5	576
15	548
25	495
35	393
45	194
55	83
65	40
75	24
85	6
90	0

Average Initial Footcandles

Multiple Units (Square Array, 60'x 60' room)

Ceiling 80%, Wall 50%, Floor 20%

Spacing	RCR1	RCR3	RCR5
4.0'	67	54	45
5.0'	43	34	29
6.0'	30	24	20
7.0'	24	19	16
8.0'	19	15	13
9.0'	15	12	10
10.0'	11	9	7

Zonal Lumen Summary

Zone	Lumens	%Lamp	%Fixture
0 - 30°	436	N/A	44.6
0 - 40°	677	N/A	69.2
0 - 60°	906	N/A	92.6
0 - 90°	979	N/A	100.0

Initial Footcandles

(One Unit, 17.8W , 80.5° Beam)

Distance to Illuminated Plane (Feet)	Footcandles Beam Center	Beam Diameter
4	61.2	6.8'
6	27.2	10.2'
8	15.3	13.5'
10	9.8	16.9'

Luminance (Average cd/m2)

Degrees	Average Luminance
45	15003
55	7925
65	5236
75	4994
85	4022

Fixtures tested to IES recommended standard for solid state lighting per LM-79-08. Photometric performance on a single unit represents a baseline of performance for the fixture. Results may vary in the field.



6" WarmDim® Retrofit LED Downlight Trim Module



All-in-one 6" LED Retrofit downlight trim with patented WarmDim® technology installs into existing 6" incandescent housings with medium base sockets or Juno IC23-LEDT24 and IC23R-LEDT24 quick connect recessed housings. LED color temperature warms while dimming to emulate the dimming performance of traditional incandescent light sources. May be used in housings completely covered with insulation. Selection of interchangeable baffle and cone trim inserts can be changed in the field to customize the look of the product. Dimmable with most standard incandescent or electronic low voltage dimmers. Designed to provide 50,000 hours of life. 5 year limited warranty on LED components.

Example: J6RLWDG4N-3K-6-WWH

Retrofit Downlight Trim	Color Temp.	Lumen Package	Trim Style
J6RLWDG4N	3K 3000K	6 600 Lumen	WWH White Baffle BWH Black Baffle CLW Clear Cone WHW White Cone HZW Haze Cone WZW Wheat Haze Cone

6" WarmDim® Retrofit LED Eyeball Trim Module



All-in-one 6" LED Retrofit eyeball trim with patented WarmDim® technology installs into existing 6" incandescent housings with medium base sockets or Juno IC23-LEDT24 and IC23R-LEDT24 quick connect recessed housings. LED color temperature warms while dimming to emulate the dimming performance of traditional incandescent light sources. May be used in housings completely covered with insulation. Adjustable eyeball design allows for 30° vertical adjustment. Field installable medium flood optic accessory available. Dimmable with most standard incandescent or electronic low voltage dimmers. Designed to provide 50,000 hours of life. 5 year limited warranty on LED components.

Example: J6RLEWDG4N-3K-6-WH

Retrofit Eyeball Trim	Color Temp.	Lumen Package	Finish
J6RLEWDG4N	3K 3000K	6 600 Lumen	WH White

Compatible Housings

The J6RLWDG4N and J6RLEWDG4N retrofit modules are compatible with most 6" recessed housings measuring at least 5-1/4" high with an inside diameter between 6" and 6-3/4". Removal of the housing socket plate or socket mounting bracket may be required in order for the trim to fit properly. If housing does not have torsion spring brackets, the V6RL-TRB accessory is required. Compatible housings include, but not limited to:

- Juno housings:** IC2 and TC2 Series, IC22 Series, IC23 Series, IC21 Series
- VuLite housings:** V6IC and V6TC Series
- Halo housings:** H7 Series
- Thomas housings:** PS1 and PS3 Series
- Capri housings:** QL1 Series
- Lithonia housings:** L7X and LC6 Series

¹ Not ENERGY STAR® rated.

ENERGY STAR® Qualification and T24 certification is dependent on trim finish. See housing spec sheet on www.junolightinggroup.com for specific information for each trim.

LED Downlight Trim Inserts

Interchangeable trim inserts for WarmDim LED retrofit downlight modules are offered in six beautiful finishes.



J6RLTRIM-WWH
White Baffle



J6RLTRIM-WHW
White Cone



J6RLTRIM-BWH
Black Baffle



J6RLTRIM-HZW
Haze Cone



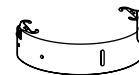
J6RLTRIM-CLW
Clear Cone



J6RLTRIM-WZW
Wheat Haze Cone

Accessories

Catalog No.	Description
LEDOPTICG3-M	Medium Flood Optic (50°) (J6RLEWDG4N only)
V6RL-TRB	Torsion receiver bracket kit to install Juno Retrofit LED Trim Modules into housings that do not have torsion receiver brackets.



To order, specify catalog number

Juno Dedicated LED Housings



Fixture Style: IC23-LEDT24
Description: 6" IC New Construction



Fixture Style: IC23R-LEDT24
Description: 6" IC Remodel



Example: J6RLWDG4N-3K-6-WWH

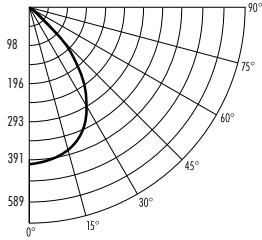
Photometric Report

Test Report #: PT09141107

Catalog No: J6RLWDG4N-3K-6 with White Baffle Trim

Luminaire Spacing Criterion: 1.18

Luminaire LPW: 56



Candlepower Distribution
(Candelas)

Degrees Vertical	0°
0	405
5	403
15	386
25	348
35	266
45	128
55	58
65	31
75	14
85	3
90	0

Average Initial Footcandles

Multiple Units (Square Array, 60' x 60' room)

Ceiling 80%, Wall 50%, Floor 20%

Spacing	RCR1	RCR3	RCR5
4.0'	45	37	31
5.0'	29	24	20
6.0'	20	16	14
7.0'	16	13	11
8.0'	13	11	9
9.0'	10	8	7
10.0'	7	6	5

Zonal Lumen Summary

Zone	Lumens	%Lamp	%Fixture
0 - 30°	307	N/A	45.6
0 - 40°	470	N/A	69.9
0 - 60°	624	N/A	92.8
0 - 90°	673	N/A	100.0

Initial Footcandles

(One Unit, 12.1W , 79.2° Beam)

Distance to Illuminated Plane (Feet)	Footcandles Beam Center	Beam Diameter
4	25.3	6.6'
6	11.3	9.9'
8	6.3	13.2'
10	4.1	16.5'

Luminance (Average cd/m2)

Degrees	Average Luminance
45	11704
55	6487
65	4685
75	3450
85	2005

Example: J6RLEWDG4N-3K-6-WH

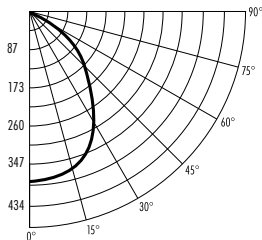
Photometric Report

Test Report #: PT0141803

Catalog No: J6RLEWDG4N-3K-6-WH with standard wide beam optic

Luminaire Spacing Criterion: 1.18

Luminaire LPW: 61



Candlepower Distribution
(Candelas)

Degrees Vertical	0°
0	374
5	372
15	354
25	316
35	257
45	177
55	99
65	49
75	19
85	2
90	0

Average Initial Footcandles

Multiple Units (Square Array, 60' x 60' room)

Ceiling 80%, Wall 50%, Floor 20%

Spacing	RCR1	RCR3	RCR5
4.0'	49	40	32
5.0'	32	25	21
6.0'	22	18	14
7.0'	18	14	12
8.0'	14	11	9
9.0'	11	9	7
10.0'	8	6	5

Zonal Lumen Summary

Zone	Lumens	%Lamp	%Fixture
0 - 30°	280	N/A	38.0
0 - 40°	440	N/A	59.7
0 - 60°	666	N/A	90.2
0 - 90°	738	N/A	100.0

Initial Footcandles

(One Unit, 12.1W , 87.6° Beam)

Distance to Illuminated Plane (Feet)	Footcandles Beam Center	Beam Diameter
4	23.4	7.7'
6	10.4	11.5'
8	5.8	15.3'
10	3.7	19.2'

Luminance (Average cd/m2)

Degrees	Average Luminance
45	26371
55	18291
65	12149
75	7552
85	2182

Fixtures tested to IES recommended standard for solid state lighting per LM-79-08. Photometric performance on a single unit represents a baseline of performance for the fixture. Results may vary in the field.



6" WarmDim® Standard Slope Ceiling LED 2/12 to 6/12 Pitch (9° to 27°)



Dedicated LED, Air-Loc® sealed slope ceiling new construction housing with patented WarmDim® technology. LED color temperature warms while dimming to emulate the dimming performance of traditional incandescent light sources. IC rated construction housing can be completely covered with insulation. Fully sealed housing stops infiltration and exfiltration of air, reducing heating and air cooling costs without the use of additional gaskets. LED housing is designed to provide 50,000 hours of life and is compatible with standard Juno trims. 5 year limited warranty on LED components.

Example: IC926LWD9G4-3K-1

Lumen Package	Housing	Color Temp.	Input Voltage
900 Lumen	IC926LWD9G4	3K 3000K	1 Dedicated 120V only (forward phase and ELV dimming)

6" WarmDim® Super Slope Ceiling LED 7/12 to 12/12 Pitch (30° to 45°)



Dedicated LED, Air-Loc® sealed super slope ceiling new construction housing with patented WarmDim® technology. LED color temperature warms while dimming to emulate the dimming performance of traditional incandescent light sources. IC rated construction housing can be completely covered with insulation. Fully sealed housing stops infiltration and exfiltration of air, reducing heating and air cooling costs without the use of additional gaskets. LED housing is designed to provide 50,000 hours of life and is compatible with standard Juno trims. 5 year limited warranty on LED components.

Example: IC928LWD9G4-3K-1

Lumen Package	Housing	Color Temp.	Input Voltage
900 Lumen	IC928LWD9G4	3K 3000K	1 Dedicated 120V only (forward phase and ELV dimming)

Slope Ceiling Trims

Open and lensed trims feature shadow-free, knife-edge rings that blend unobtrusively with sloped ceilings. Drawn from a selection of existing Juno trims, this collection offers an extensive variety of styles, colors, and finishes.

Standard Slope Open Trims



Baffle
614B-WH Black Baffle
614B-SC Black Baffle
614B-ABZ Black Baffle
614B-BL Black Baffle
614W-WH White Baffle

Super Slope Open Trims



Baffle
604B-WH Black Baffle
604B-SC Black Baffle
604B-ABZ Black Baffle
604B-BL Black Baffle
604W-WH White Baffle



Cone
620C-WH Clear Alzak®
620B-WH1 Black Alzak®
620HZ-WH Haze
620HZ-SC Haze
620W-WH White
620WHZ-WH Wheat Haze
620WHZ-ABZ Wheat Haze



Cone
602C-WH Clear Alzak®
602B-WH Black Alzak®
602HZ-WH Haze
602HZ-SC Haze
602W-WH White
602WHZ-WH Wheat Haze
602WHZ-ABZ Wheat Haze

Lensed Trims



**Baffle, Regressed
 Frosted Dome Lens**
6330W-WH White



**Baffle, Regressed
 Frosted Dome Lens**
6033W-WH White

ENERGY STAR® Qualification dependent on trim finish.

Example: IC926LWD9G4-1 with 614W-WH Trim

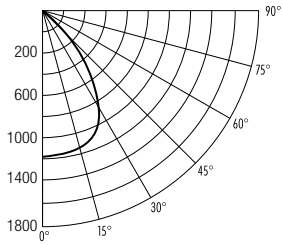
Photometric Report

Test Report #: PT02140803

Catalog No: IC926LWD9G4-1 with 614W-WH Trim

Luminaire Spacing Criterion: 1.18

Luminaire LPW: 55



Candlepower Distribution
(Candelas)

Degrees Vertical	0°
0	1197
5	1190
10	1184
15	1186
20	1163
25	1090
30	934
35	652
40	340
45	150
50	74
55	44
60	29
65	21
70	15
75	11
80	8
85	4
90	0

Average Initial Footcandles

Multiple Units (Square Array, 60'x60' room)

Ceiling 80%, Wall 50%, Floor 20%

Spacing	RCR1	RCR3	RCR5
4.0'	66	56	48
5.0'	42	36	31
6.0'	29	25	21
7.0'	24	20	17
8.0'	19	16	14
9.0'	14	12	10
10.0'	11	9	8

Zonal Lumen Summary

Zone	Lumens	%Lamp	%Fixture
0 - 30°	679	N/A	69.2
0 - 40°	852	N/A	86.8
0 - 60°	949	N/A	96.7
0 - 90°	981	N/A	100.0

Initial Footcandles

(One Unit, 17.8W, 43.3° Beam)

Distance to Illuminated Plane (Feet)	Footcandles Beam Center	Beam Diameter
4	105.9	3.2'
6	47.1	4.8'
8	26.5	6.4'
10	17.0	7.9'

Luminance (Average cd/m2)

Degrees	Average Luminance
45	13763
55	4919
65	3277
75	2650
85	3267

Example: IC928LWD9G4-1 with 604W-WH Trim

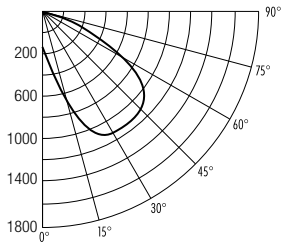
Photometric Report

Test Report #: PT02140802

Catalog No: IC928LWD9G4-1 with 604W-WH Trim

Luminaire Spacing Criterion: 3.38

Luminaire LPW: 53



Candlepower Distribution
(Candelas)

Degrees Vertical	0°
0	187
5	300
10	483
15	712
20	934
25	1099
30	1184
35	1199
40	1181
45	1170
50	1123
55	955
60	663
65	433
70	264
75	128
80	37
85	4
90	0

Average Initial Footcandles

Multiple Units (Square Array, 60'x60' room)

Ceiling 80%, Wall 50%, Floor 20%

Spacing	RCR1	RCR3	RCR5
4.0'	63	49	39
5.0'	40	31	25
6.0'	28	22	17
7.0'	23	17	14
8.0'	18	14	11
9.0'	14	11	8
10.0'	10	8	6

Zonal Lumen Summary

Zone	Lumens	%Lamp	%Fixture
0 - 30°	248	N/A	26.2
0 - 40°	454	N/A	47.9
0 - 60°	829	N/A	87.5
0 - 90°	948	N/A	100.0

Initial Footcandles

(One Unit, 17.8W, 49.5° Beam)

Distance to Illuminated Plane (Feet)	Footcandles Beam Center	Beam Diameter
4	74.9	3.7'
6	33.3	5.5'
8	18.7	7.4'
10	12.0	9.2'

Luminance (Average cd/m2)

Degrees	Average Luminance
45	107095
55	107682
65	66236
75	31977
85	2970

Fixtures tested to IES recommended standard for solid state lighting per LM-79-08. Photometric performance on a single unit represents a baseline of performance for the fixture. Results may vary in the field.



Index

Catalog Number	Page	Catalog Number	Page	Catalog Number	Page	Catalog Number	Page	Catalog Number	Page
Housings		Trims						Accessories	
IC1LWDG4N	12	11-WH	12	204B-WH	14	614B-WH	20	LEDOPTICG3-M	14, 16, 18
IC1RLWDG4N	12	12SQ-W-WH	12	204C-WH	14	614W-WH	20	V6RL-TRB	18
IC91LWDG4	12	12W-ABZ	12	204G-WH	14	620B-WH	20		
IC91RLWDG4	12	12W-SC	12	204HZ-WH	14	620C-WH	20		
IC20LWDG4N	14	12W-WH	12	204PT-SC	14	620HZ-SC	20		
IC20RLWDG4N	14	13-WH	12	204W-WH	14	620HZ-WH	20		
IC22LWDG4N	16	13SQ-WH	12	204WHZ-ABZ	14	620W-WH	20		
IC22RLWDG4N	16	14B-ABZ	12	204WHZ-WH	14	620WHZ-ABZ	20		
IC23-LEDT24	18	14B-BL	12	205B-ABZ	14	620WHZ-WH	20		
IC23R-LEDT24	18	14B-SC	12	205B-SC	14	2130B-WH	14		
IC920LWDG4	14	14B-WH	12	205B-WH	14	2130W-WH	14		
IC920RLWDG4	14	14W-WH	12	205W-WH	14	2330B-WH	16		
IC922LWDG4	16	17B-WH	12	210N-ABZ	14	2330W-WH	16		
IC922RLWDG4	16	17C-WH	12	210N-SC	14	4101-ABZ	12		
IC926LWD9G4	20	17G-WH	12	210N-WH	14	4101-SC	12		
IC928LWD9G4	20	17HZ-WH	12	212N-ABZ	14	4101-WH	12		
J6RLEWDG4N	18	17PT-SC	12	212N-SC	14	4102-ABZ	12		
J6RLWDG4N	18	17SQ-B-WH	12	212N-WH	14	4102-SC	12		
		17SQ-HZ-WH	12	213G3B-WH	14	4102-WH	12		
		17SQ-W-WH	12	213G3W-WH	14	4103FROST-SC	12		
		17SQ-WHZ-WH	12	239-WH	16	4103FROST-WH	12		
		17W-WH	12	242-ABZ	16	4104HZ-SC	12		
		17WHZ-ABZ	12	242-SC	16	4104WHZ-ABZ	12		
		17WHZ-WH	12	242-WH	16	4150MESH-SC	12		
		20-PW	16	243-WH	16	5101-ABZ	14		
		20-WH	16	262G3B-WH	16	5101-SC	14		
		21-PW	16	262G3W-WH	16	5101-WH	14		
		21-WH	16	602B-WH	20	6033W-WH	20		
		22-WH	16	602C-WH	20	6101-ABZ	16		
		24B-ABZ	16	602HZ-SC	20	6101-SC	16		
		24B-BL	16	602HZ-WH	20	6101-WH	16		
		24B-SC	16	602W-WH	20	6330W-WH	20		
		24B-WH	16	602WHZ-ABZ	20	9024W-WH	16		
		24W-WH	16	602WHZ-WH	20	9324-SC	16		
		27B-WH	16	604B-ABZ	20	9524-SC	16		
		27C-WH	16	604B-BL	20	9702	16		
		27G-WH	16	604B-SC	20	J6RLTRIM-BWH	18		
		27HZ-WH	16	604B-WH	20	J6RLTRIM-CLW	18		
		27PT-SC	16	604W-WH	20	J6RLTRIM-HZW	18		
		27W-WH	16	614B-ABZ	20	J6RLTRIM-WHW	18		
		27WHZ-ABZ	16	614B-BL	20	J6RLTRIM-WWH	18		
		27WHZ-WH	16	614B-SC	20	J6RLTRIM-WZW	18		



Juno[®]

Recessed and Trac Lighting

indy[™]

Architectural Recessed Lighting

AccuLite[®]

Commercial and Industrial Lighting

AcuLux[™]

Precision Recessed Lighting

NaviLite[®]

Exit and Emergency Lighting

DanaLite

Architectural Linear Lighting



Juno Lighting Group

1300 South Wolf Road
Des Plaines, IL 60018
Ph: 847.827.9880
www.junolightinggroup.com

Regional Offices & Warehouses

California
Illinois
Indiana
Pennsylvania
Texas
Ontario, CN

**Energy efficient fixtures for standard ceilings,
sloped ceilings and limited space applications**

Photo Credits

Cover: Residential kitchen, St. Charles, Illinois
Pages 2,4,5, 23: Fairview Builders, LLC Custom Home Builder,
Model Home – Cliffs at Mountain Park, Marietta, South Carolina

©2016 Acuity Brands Lighting, Inc. The marks appearing in this catalog are trademarks of Acuity Brands Lighting, Inc. Products shown in this brochure may be covered by U.S. and international patents and patents pending. Specifications subject to change without notice.

WarmDim[®] technology is covered under Patent US 8,710,754. Additional products shown in this brochure are covered by U.S. and international patents and patents pending.