



Juno[®]

Recessed and Trac Lighting

Trac-Lites[™]

Quality features and stylish designs offer affordable trac lighting for today's interiors



JUNO LIGHTING GROUP
an **AcuityBrands** company



Table of Contents

- | | | | |
|-----------|--------------------------------|-----------|----------------------|
| 4 | Low Voltage MR16 Spotlights | 19 | Mounting Accessories |
| 7 | Low Voltage Accessories | 20 | Trac Kits |
| 8 | Line Voltage GU10 Spotlights | 20 | Fixed Monopoints |
| 8 | Line Voltage PAR/BR Spotlights | 20 | Light Bars |
| 15 | Decorative Pendants | 20 | Flexible Trac Kits |
| 16 | Trac-Lites™ System | 22 | Photometric Data |
| 19 | Current Limiting Feeds | | |



Juno® Trac-Lites™

Juno Trac-Lites bring you all the style, quality and lighting performance Juno is famous for at affordable prices that can be tailored to any budget.

Juno Trac-Lites offer a total system, featuring a wide assortment of low voltage and line voltage trac fixtures, decorative pendants, system components and trac kits. Trac fixtures are available in all the popular classics and in exciting contemporary designs, from metal and glass cones to barn doors, rockets, and cubes.

For added versatility, all Trac-Lites fixtures are compatible with Juno Trac-Master® trac systems and all Juno Trac-Master fixtures may be used on Trac-Lites trac systems.

The perfect blend of form, function and value, Juno Trac-Lites is the system of choice for illuminating many of today's most stylish interiors. No matter what your application, you are sure to find the solutions you need at prices you can afford.



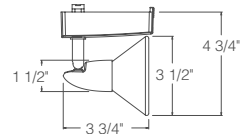
Low Voltage Spotlights

MR16

R707
Rocket



12V, 20-50W MR16CG
Complete unit includes a miniature 12V, 50VA solid state electronic transformer. Requires 12V MR16 cover glass lamp except when used with T7400 Accessory Holder.

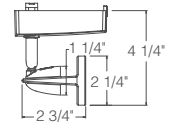


Finishes: White (WH) with Opal Frost glass, Black (BL) with Opal Frost glass, Satin Chrome (SC) with Opal Frost glass, Painted Bronze (BZ) with Amber Frost glass

R708
Odyssey



12V, 20-50W MR16
Complete unit includes a miniature 12V, 50VA solid state electronic transformer. Accepts one 2" accessory.

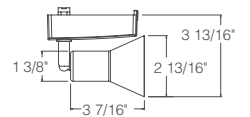


Finishes: White (WH), Black (BL), Satin Chrome (SC), Painted Bronze (BZ)

R709
Flare



12V, 20-50W MR16CG
Complete unit includes a miniature 12V, 50VA solid state electronic transformer. Requires 12V MR16 cover glass lamp except when used with T7400 Accessory Holder.

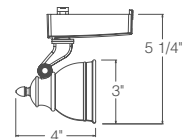


Finishes: White (WH), Black (BL), Satin Chrome (SC), Painted Bronze (BZ)

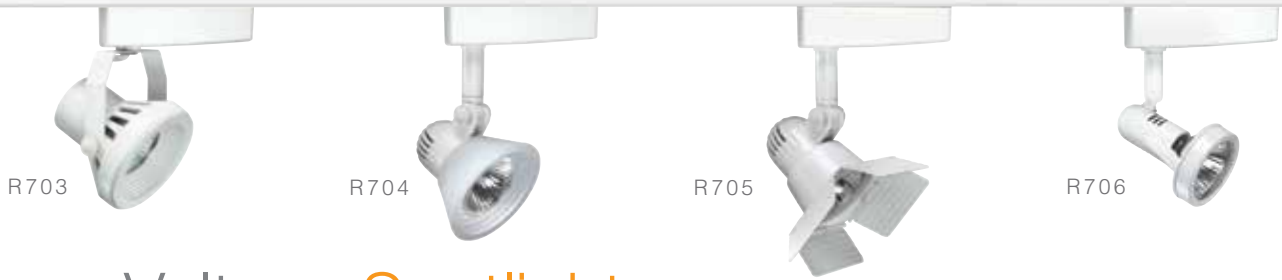
R710
Bell



12V, 20-50W MR16CG
Complete unit includes a miniature 12V, 50VA solid state electronic transformer. Integral baffle and deep lamp regression for optimal lamp shielding. Aiming locks help retain fixture position during relamping. Requires 12V MR16 cover glass lamp.



Finishes: White (WH), Black (BL), Satin Chrome (SC), Hand-Rubbed Bronze (BZ)



R703

R704

R705

R706

Low Voltage Spotlights

MR16

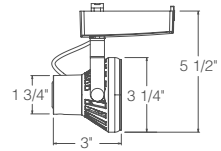
R703 Funnel



12V, 20-50W MR16

Complete unit includes a miniature 12V, 50VA solid state electronic transformer. Integral step baffle and deep lamp regression for optimal lamp shielding. Aiming locks help retain fixture position during relamping. Accepts one 2" accessory.

Finishes: White (WH), Black (BL), Silver (SL), Painted Bronze (BZ)



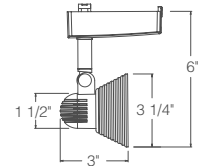
R704 Step Glass



12V, 20-50W MR16CG

Complete unit includes a miniature 12V, 50VA solid state electronic transformer. Aiming locks help retain fixture position during relamping. Requires 12V MR16 cover glass lamp except when used with T7400 Accessory Holder.

Finishes: White (WH) with Opal Frost glass, Black (BL) with Opal Frost glass, Silver (SL) with Opal Frost glass, Painted Bronze (BZ) with Amber Frost glass



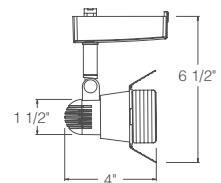
R705 Barn Doors



12V, 20-50W MR16CG

Complete unit includes a miniature 12V, 50VA solid state electronic transformer. Barn Doors painted to match fixture finish. Aiming locks help retain fixture position during relamping. Requires 12V MR16 cover glass lamp.

Finishes: White (WH), Black (BL), Silver (SL), Painted Bronze (BZ)



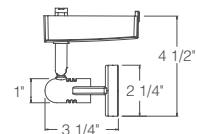
R706 Trumpet



12V, 20-50W MR16

Complete unit includes a miniature 12V, 50VA solid state electronic transformer. Accepts one 2" accessory.

Finishes: White (WH), Black (BL), Satin Chrome (SC), Painted Bronze (BZ)



All Trac-Lites™ low voltage fixtures are also compatible with Juno Trac-Master® single and two-circuit trac systems.



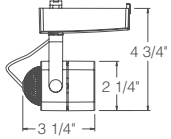
Low Voltage Spotlights

MR16

R741
Cast Cube



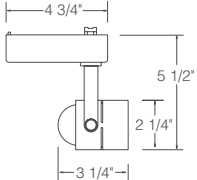
12V, 20-50W MR16
Complete unit includes a miniature 12V, 50VA solid state electronic transformer. Aiming locks help retain fixture position during relamping. Accepts one 2" accessory.
Finishes: White (WH), Black (BL), Satin Chrome (SC), Painted Bronze (BZ)



R701
Cylinder



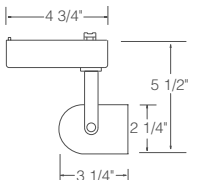
12V, 20-50W MR16
Complete unit includes 12V, 50VA solid state electronic transformer. Aiming lock helps retain fixture position during relamping. Accepts one 2" accessory.
Finishes: White (WH), Black (BL)



R702
Round Back



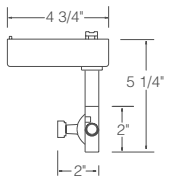
12V, 20-50W MR16
With black bezel. Complete unit includes 12V, 50VA solid state electronic transformer. Accepts one 1-3/4" accessory.
Finishes: White (WH), Black (BL), Painted Bronze (BZ)



R731
Gimbal Ring



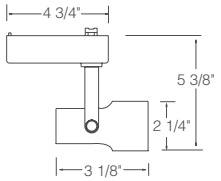
12V, 20-50W MR16
Complete unit includes 12V, 50VA solid state electronic transformer. Aiming lock helps retain fixture position during relamping. Accepts one 2" accessory.
Finishes: White (WH), Black (BL), Silver (SL), Painted Bronze (BZ)



R740
Pinchback



12V, 20-50W MR16
Complete unit includes 12V, 50VA solid state electronic transformer. Aiming lock helps retain fixture position during relamping. Accepts one 2" accessory.
Finishes: White (WH), Black (BL), Painted Bronze (BZ)





Low Voltage Accessories



Accessory Holders

Required for listed fixtures. Accepts two filters, lenses, or louvers except where noted.



Light Control Lenses

These lenses alter the light distribution of a given lamp, enlarging or elongating it, softening the beam edge or removing striations.



UV Filters

These museum quality lenses filter out ultraviolet radiation below 400 nanometers to protect fade-sensitive art and objects.



Color Correction Filters

These lenses correct the light from a halogen lamp, either to warm it up to approximate incandescent, or cool it down to approximate daylight.



Color Filters

These lenses change white light into colored light and are available in colored glass and more efficient/saturated dichroic glass filters.



Louvers

Hexcell louvers reduce perceived fixture brightness.

	1 3/4" Diameter	Compatible With	2" Diameter	Compatible With	
Accessory Holders			T7400BL, SA Accepts up to 2 accessories	R704, R707, R709	
Light Control Lenses					
Linear Spread Lens	T559		T7478	R701, R703, R731, R740 and fixtures with T7400 Accessory Holder	
Prismatic Spread Lens	T557		T7477		
Uniformity Lens	T5521		T7421		
Diffusion Lens	T5520		T7420		
UV Filter	T5522		T7422		
Color Correction Filters					
Halogen-to-Incandescent, 2700K	T5518		T7418		
Halogen-to-Daylight, 4250K	T5516		T7416		
Colored Glass Filters					
Medium Pink	T551	R702	T741	R701, R703, R706, R708, R731, R740, R741 and fixtures with T7400 Accessory Holder	
Warm Red			T742		
Daylight Blue			T743		
Medium Blue	T553		T744		
Medium Amber	T555		T745		
Medium Green			T746		
Dichroic Glass Filters					
Red	T5501		T7401		
Medium Green	T5503		T7403		
Medium Blue	T5504		T7404		
Yellow	T5505	T7405			
Magenta	T5506	T7406			
Blue-Green (Cyan)	T5511	T7411			
Hexcell Louver	T5559BL		T7459BL		

All Trac-Lites™ low voltage fixtures are also compatible with Juno Trac-Master® single and two-circuit trac systems.



R711

R712

R713

R714

Line Voltage Spotlights

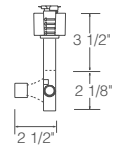
PAR16 / MR16 GU10

R711 Open Back Spotlight



120V, 35-50W PAR16/MR16 GU10
Aiming lock helps retain fixture position during relamping.

Finishes: White (WH), Black (BL)

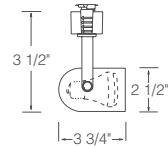


R712 Round Back Cylinder



120V, 35-50W PAR16/MR16 GU10
With black bezel.

Finishes: White (WH), Black (BL)

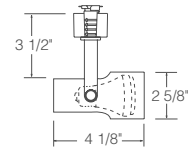


R713 Step Cylinder



120V, 35-50W PAR16/MR16 GU10
With black bezel.

Finishes: White (WH), Black (BL)

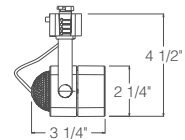


R714 Cast Cube



120V, 35-50W PAR16/MR16 GU10
Aiming locks help retain fixture position during relamping.

Finishes: White (WH), Black (BL),
Satin Chrome (SC), Painted Bronze (BZ)





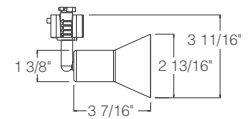
Line Voltage Spotlights

PAR16 / MR16 GU10

R715
Flare



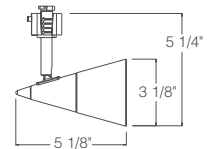
120V, 35-50W PAR16/MR16 GU10
Finishes: White (WH), Black (BL),
Satin Chrome (SC), Painted Bronze (BZ)



R716
Glass Cone



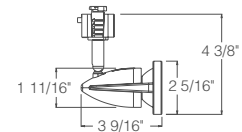
120V, 35-50W PAR16/MR16 GU10
Finishes: White (WH) with Opal Frost glass,
Black (BL) with Opal Frost glass, Satin Chrome
(SC) with Opal Frost glass, Painted Bronze (BZ)
with Amber Frost glass



R717
Odyssey



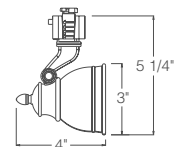
120V, 35-50W PAR16/MR16 GU10
Finishes: White (WH), Black (BL),
Satin Chrome (SC), Painted Bronze (BZ)



R718
Bell



120V, 35-50W PAR16/MR16 GU10
Integral baffle and deep lamp regression
for optimal lamp shielding. Aiming locks
help retain fixture position during relamping.
Finishes: White (WH), Black (BL), Satin
Chrome (SC), Hand-Rubbed Bronze (BZ)



All Trac-Lites™ line voltage fixtures feature an on/off switch and are also compatible with Juno Trac-Master® single and two-circuit trac systems.



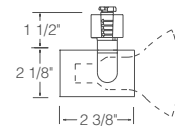
Line Voltage Spotlights

Universals, Flared Gimbals and Flared Steps

R541
Universal



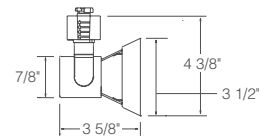
35-50W PAR20/35-75W PAR30
Finishes: White (WH), Black (BL)



R531
Flared Gimbal



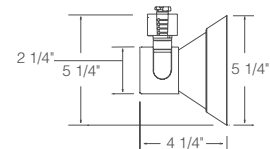
35-50W PAR20
Finishes: White (WH), Black (BL), Satin Chrome (SC) with Black yoke and adapter, Painted Bronze (BZ)



R532
Flared Gimbal



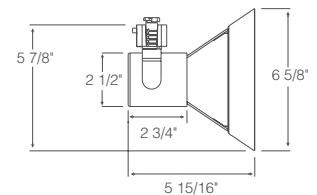
35-75W PAR30
Finishes: White (WH), Black (BL), Satin Chrome (SC) with Black yoke and adapter, Painted Bronze (BZ)



R530
Flared Gimbal



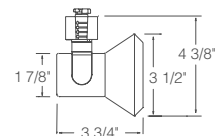
45-120W PAR38
Finishes: White (WH), Black (BL), Satin Chrome (SC) with Silver yoke and adapter, Painted Bronze (BZ)



R551
Flared Step



35-50W PAR20
Finishes: White (WH), Black (BL), Satin Chrome (SC) with Black yoke and adapter, Painted Bronze (BZ)



All Trac-Lites™ line voltage fixtures feature an on/off switch and are also compatible with Juno Trac-Master® single and two-circuit trac systems.

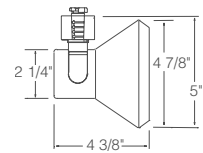


R552
Flared Step



35-75W PAR30

Finishes: White (WH), Black (BL),
Satin Chrome (SC) with Black yoke
and adapter, Painted Bronze (BZ)

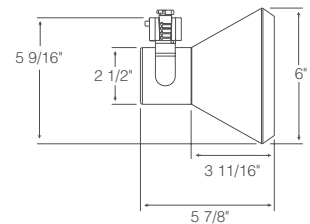


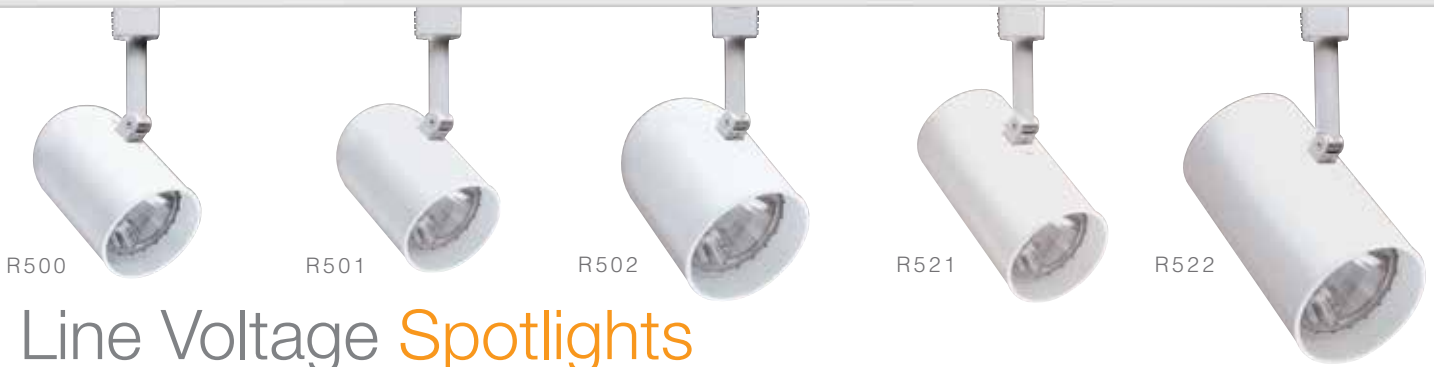
R550
Flared Step



45-120W PAR38

Finishes: White (WH), Black (BL),
Satin Chrome (SC) with Silver yoke
and adapter, Painted Bronze (BZ)





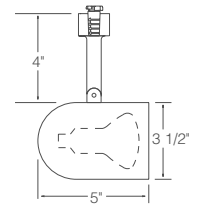
Line Voltage **Spotlights**

Round Back Cylinders and Flat Back Cylinders

R500
Round Back
Cylinder



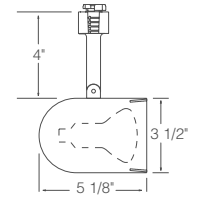
30-50W R20/35-50W PAR20
Without baffle
Finishes: White (WH), Black (BL)



R501
Round Back
Cylinder



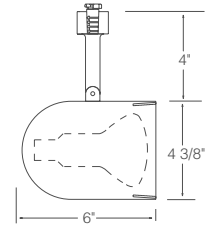
30-50W R20/35-50W PAR20
R501B – With black baffle
Finishes: White (WH), Black (BL),
Polished Brass (PB), Painted Bronze (BZ)
R501W – With white baffle
Finish: White (WH)



R502
Round Back
Cylinder



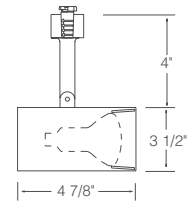
45-65W BR30/35-75W PAR30/PAR30L
(Short neck PAR30 requires
T599 Socket Extender).
R502B – With black baffle
Finishes: White (WH), Black (BL),
Painted Bronze (BZ)
R502W – With white baffle
Finish: White (WH)



R521W
Flat Back
Cylinder



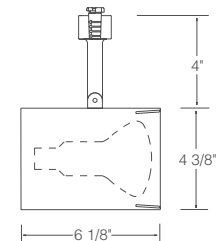
30-50W R20/35-50W PAR20
With white baffle
Finish: White (WH)



R522W
Flat Back
Cylinder



45-65W BR30/35-75W
PAR30/PAR30L
(Short neck PAR30 requires
T599 Socket Extender).
With white baffle
Finish: White (WH)





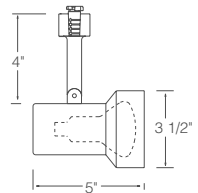
Line Voltage Spotlights

Step Cylinders and Open Backs

R510
Step Cylinder



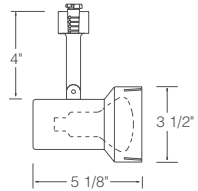
30-50W R20/35-50W PAR20
Without baffle
Finishes: White (WH), Black (BL)



R511
Step Cylinder



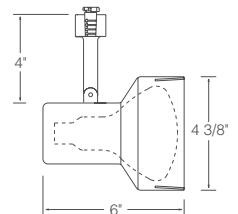
30-50W R20/35-50W PAR20
R511B – With black baffle
Finishes: White (WH), Black (BL), Polished Brass (PB)
R511W – With white baffle
Finish: White (WH)



R512
Step Cylinder



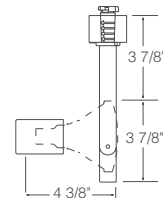
45-65W BR30/35-75W PAR30/PAR30L
(Short neck PAR30 requires T599 Socket Extender).
R512B – With black baffle
Finishes: White (WH), Black (BL)
R512W – With white baffle
Finish: White (WH)



R533
Open Back
Spotlight



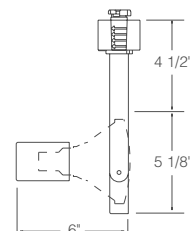
35-75W PAR30
Finishes: White (WH), Black (BL)



R534
Open Back
Spotlight



45-120W PAR38
Finishes: White (WH), Black (BL)



All Trac-Lites™ line voltage fixtures feature an on/off switch and are also compatible with Juno Trac-Master® single and two-circuit trac systems.



R560



R761



Decorative Pendants

Glass pendants in both miniature low voltage and larger-scaled line voltage designs provide efficient task lighting over counters and tables while adding a decorative touch to interiors.

Line Voltage

R560
Large Cone



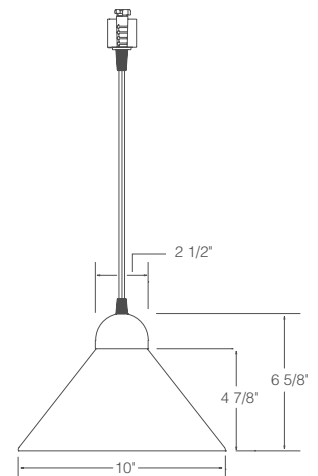
60W A19 Max.

Complete unit includes 48" field adjustable pendant cord and blue or white glass cone shade.

Includes on/off switch.

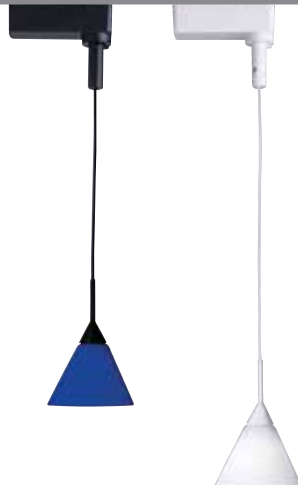
Lamp supplied by others.

Finishes: Blue (BU) with black hardware, White (WH) with white hardware



Low Voltage

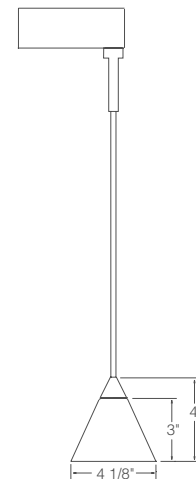
R761
Small Cone



12V, 50W Max.
T4 Halogen GY6.35
Bi-Pin Capsule

Complete unit includes 12V, 50VA solid state electronic transformer, 48" field adjustable pendant cord, blue or white glass cone shade and 12V, 50W halogen lamp.

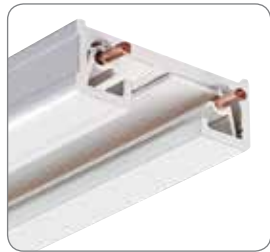
Finishes: Blue (BU) with black hardware, White (WH) with white hardware



All Trac-Lites™ Decorative Pendants are also compatible with Juno Trac-Master® single and two-circuit trac systems.



Juno Trac-Lites™ System



Trac sections are constructed of extruded aluminum and offer a low 1/2" profile that unobtrusively hugs the ceiling. Attractive yet affordable, they incorporate all the popular Juno trac features, including debossed polarity indicators for fast, sure alignment. Standard trac sections are available in 2', 4', 6' and 8' lengths with 12-gauge copper conductors. They can be easily cut to custom lengths in the field. A comprehensive selection of electrical feeds and connectors completes this highly versatile system.



Trac System

Trac Sections

2' Trac

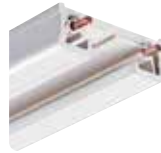
19-7/8" actual length

R2BL Black **R2SL** Silver
R2BZ Bronze **R2WH** White
R2NA Natural

6' Trac

67-7/8" actual length

R6BL Black **R6SL** Silver
R6BZ Bronze **R6WH** White
R6NA Natural



4' Trac

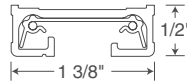
43-7/8" actual length

R4BL Black **R4SL** Silver
R4BZ Bronze **R4WH** White
R4NA Natural

8' Trac

91-7/8" actual length

R8BL Black **R8SL** Silver
R8BZ Bronze **R8WH** White
R8NA Natural



- Low 1/2" profile fits snugly to ceiling
- Rigid extruded aluminum channel
- 12 gauge solid copper conductors
- 20 Amp capacity
- Debossed polarity line provides visual alignment with fixtures and connector polarity arrows
- One circuit only
- Includes dead end and mounting hardware
- Can be cut to custom length by installer

Electrical Feeds



End Feed Connector and Outlet Box Cover

For outlet box feed. Includes outlet box cover, fixture strap and ground screw.

R21BL Black **R21SL** Silver
R21BZ Bronze **R21WH** White



T-Bar End Feed

Wiring compartment contains standard 1/2" K.O.'s. Feeds Trac from above when T-Bar is directly above Trac.

R36BL Black **R36SL** Silver
R36BZ Bronze **R36WH** White



End Feed Connector

Feeds Trac from above with Flex or BX. Accepts standard 1/2" electrical connector.

R38BL Black **R38SL** Silver
R38BZ Bronze **R38WH** White



Cord and Plug End Feeds

End Feed Connector with 15' 2-wire white cord. Includes surface wire retainers and in-line switch. 7 Amp maximum. Not UL Rated.

R22BL Black **R22SL** Silver
R22BZ Bronze **R22WH** White

Same as left, but with 3-wire grounded complementary color cords. No switch. 7 Amp maximum. Not UL Rated.

R122BL Black
R122BZ Bronze - with black cord & plug

R122SL Silver - with black cord & plug
R122WH White



Conduit Feed

For surface wiring using standard 1/2" electrical connector.

R34BL Black **R34SL** Silver
R34BZ Bronze **R34WH** White



Floating Electrical Feed

Permits mounting at any point along Trac at outlet box. Includes floating connector, outlet box cover, and Trac dead end.

R29BL Black **R29SL** Silver
R29BZ Bronze **R29WH** White

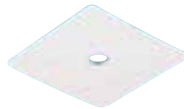
Connectors



Miniature Straight Connector

Joins two Trac sections end to end.

R23BL Black **R23SL** Silver
R23BZ Bronze **R23WH** White



Outlet Box Cover

Use with R24 and R25 for outlet box electrical feed. Includes nipple, locknut and ground screw.

T27BL Black **T27SL** Silver
T27BZ Bronze **T27WH** White



Flexible Adjustable Joiner

Joins two Trac sections. Can flex to 90° to the left, right, up or down.

R20BL Black **R20SL** Silver
R20BZ Bronze **R20WH** White



Trac Continuation Kit

Two conduit adapters (one left R34 and one right R34) to continue Trac run around or thru obstructions. Use with standard 1/2" electrical connectors.

R49BL Black **R49SL** Silver
R49BZ Bronze **R49WH** White



Adjustable Connector

Joins two Trac sections to make 90° angle or straight run. T27 required for junction box feed. Straight and right angle covers supplied.

R24BL Black **R24SL** Silver
R24BZ Bronze **R24WH** White



Dead End

Only required when terminating extra field cut-off sections. One supplied with Trac Section.

R28BL Black **R28SL** Silver
R28BZ Bronze **R28WH** White



T Connector

Joins three Trac sections. T27 required for junction box feed.

R25BL Black **R25SL** Silver
R25BZ Bronze **R25WH** White

Current Limiting Feeds

Trac-Lites Current Limiting Feeds are the ideal solution for bringing trac applications into conformance with today's stringent commercial energy codes. Current Limiting Feeds – also known as Current Limiting Circuit Breakers – replace standard electrical feeds and are installed at every trac feed location. They help avoid the watts-per-linear-foot penalties found in most energy codes, reducing calculated watts by as much as 75% or more. Current Limiting Circuit Breakers (ordered separately) are available in increments from 0.5A to 14A, permitting them to be closely matched to planned system wattage. Juno remote-mount Current Limiting Subpanels are also available for Trac-Lites systems – please visit our website for details.

Electrical Feeds



End Feed
Enables trac to be fed in one direction.
RCLF11BL Black
RCLF11BZ Bronze
RCLF11SL Silver
RCLF11WH White



In-Line Feed
Enables trac to be fed in two directions. Accepts either one or two circuit breakers.
RCLF21BL Black
RCLF21BZ Bronze
RCLF21SL Silver
RCLF21WH White

Current Limiting Circuit Breakers

Catalog #	Description	Wattage	Finish
TCL0.5	0.5A Current Limiting Circuit Breaker	60W	BL, WH
TCL1	1A Current Limiting Circuit Breaker	120W	BL, WH
TCL2	2A Current Limiting Circuit Breaker	240W	BL, WH
TCL3	3A Current Limiting Circuit Breaker	360W	BL, WH
TCL4	4A Current Limiting Circuit Breaker	480W	BL, WH
TCL5	5A Current Limiting Circuit Breaker	600W	BL, WH
TCL6	6A Current Limiting Circuit Breaker	720W	BL, WH
TCL7	7A Current Limiting Circuit Breaker	840W	BL, WH
TCL8	8A Current Limiting Circuit Breaker	960W	BL, WH
TCL9	9A Current Limiting Circuit Breaker	1080W	BL, WH
TCL10	10A Current Limiting Circuit Breaker	1200W	BL, WH
TCL12	12A Current Limiting Circuit Breaker	1440W	BL, WH
TCL14	14A Current Limiting Circuit Breaker	1680W	BL, WH

Mounting Accessories

A full range of accessories are available to tailor the Trac-Lites system to your exact requirements. Ceiling Pendant Stem Kits permit trac to be mounted at ideal heights without having to lower the entire ceiling plane. Please note that stems can be specified in a variety of lengths and can be coupled for higher-ceiling applications.



Monopoint - Line Voltage
Accepts Juno 120V Trac fixtures. Mounts directly to outlet box. 4-3/4" dia. x 5/8" high
R40BL Black **R40SL** Silver
R40BZ Bronze **R40WH** White



Monopoint - Low Voltage
Accepts Juno 12V Trac-Lites® low voltage trac fixtures and decorative pendants. Mounts directly to outlet box. 6-1/2" dia. x 1/2" high
R58BL Black **R58SL** Silver
R58BZ Bronze **R58WH** White



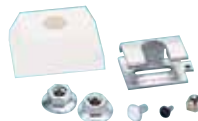
T-Bar Ceiling Pendant Stem Kits*
Use two for 2', 4' or 6' Trac, or three for 8' Trac. For electrical feed, order Wireway Cover T93.
T90-12-BL, T90-12-BZ, T90-12-SL, T90-12-WH
T90-18-BL, T90-18-BZ, T90-18-SL, T90-18-WH
T90-24-BL, T90-24-BZ, T90-24-SL, T90-24-WH
T90-36-BL, T90-36-BZ, T90-36-SL, T90-36-WH
T90-48-BL, T90-48-BZ, T90-48-SL, T90-48-WH

Rigid Ceiling Pendant Stem Kits*
Use two for 2', 4', or 6' Trac, or three for 8' Trac. For electrical feed, order Wireway Cover T93.
T91-12-BL, T91-12-BZ, T91-12-SL, T91-12-WH
T91-18-BL, T91-18-BZ, T91-18-SL, T91-18-WH
T91-24-BL, T91-24-BZ, T91-24-SL, T91-24-WH
T91-36-BL, T91-36-BZ, T91-36-SL, T91-36-WH
T91-48-BL, T91-48-BZ, T91-48-SL, T91-48-WH

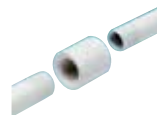
*Pendant Stems should not be used to support Trac-Lites Series Trac when used in conjunction with Trac-Master TBX Series Biax trac fixtures.



T-Bar Attachment Clips
To attach Trac to inverted tee grid ceiling. Use two for 2' or 4' Trac or three for 6' or 8' Trac.
R37F 15/16" T-Bar clip for use with flush tile ceilings.
R37D 15/16" T-Bar clip for use with drop tile ceilings.
R37-9-16 9/16" T-Bar clip for use with flush or drop tile ceilings.



Solid Rod Pendant Mounting Kit
Attaches solid 5/16" threaded rod to Trac. Includes plastic cap, mounting bracket, and hardware. Rod not supplied.
T56BL Black **T56SL** Silver
T56BZ Bronze **T56WH** White



Pendant Stem Threaded Coupling
Enables multiple pendant stems to be joined for higher-ceiling applications.
T96BL Black **T96SL** Silver
T96BZ Bronze **T96WH** White



Pendant Slope Ceiling Adapter
Permits pendant Trac stem to be hung vertically from sloped ceiling. Use pendant kits (T90, T91). Will allow feeding of electrical wires to Trac at up to a 60° angle.
T94BL Black **T94SL** Silver
T94BZ Bronze **T94WH** White



Feed Wireway Cover
Use one for each T90 or T91 when using stem for feeding Trac. Feed using R38 or R24. Conceals electrical feed wires from stem to Trac.
T93BL Black **T93SL** Silver
T93BZ Bronze **T93WH** White



Trac Kits

Easy-to-install Trac-Lites Kits are available with many popular fixture styles. Everything needed for a professional installation is included in a single box. These kits enable you to produce dramatic lighting effects throughout the home, including kitchens, dens, family rooms and much more.



Line Voltage Step Cylinder Trac Kits

4' Kit with Three Fixtures

45-65W BR30/35-75W PAR30L Lamps
One 4' section of trac, floating feed and three white step cylinder fixtures with white baffles.

R4K3512W-WH White

4' Kit with Three Fixtures

35-50W PAR20 Lamps
One 4' section of trac, floating feed, mounting hardware and three white flared step cylinder fixtures.

R4K3551WH White

Low Voltage Round Back Trac Kits

4' Kit with Three Fixtures

12V 20-50W MR16 Lamps
One 4' section of trac, floating feed and three white low voltage round back cylinder fixtures.

R4K3702WH White

Line Voltage Round Back Trac Kits

2' Kit with Two Fixtures

30-50W R20/35-50W PAR20 Lamps
One 2' section of trac, floating feed and two white round back cylinder fixtures without baffles.

R2K2500WH White

4' Kit with Two Fixtures

30-50W R20/35-50W PAR20 Lamps
Two 2' sections of trac, floating feed, mini connector and two white round back cylinder fixtures with white baffles.

R4K2501W-WH White

4' Kit with Three Fixtures

120V, 35-50W PAR16/MR16 GU10 Lamps
Two 2' sections of trac, floating feed, mini connector, three white round back cylinder fixtures with black bezels and three 50W GU10 Lamps.

R4K3712WH White

Fixed Monopoints

Monopoints provide optimum mounting flexibility, enabling trac heads to be installed precisely where light is needed.

Step Cylinder Monopoint



45-65W BR30/35-75W PAR30L Lamp
(Short neck PAR30 requires T599 Socket Extender)
White baffle.

R1F512W-WH White

Round Back Cylinder Monopoints



30-50W R20/35-50W PAR20 Lamp
White baffle.

R1F501W-WH White



45-65W BR30/35-75W PAR30L Lamp
(Short neck PAR30 requires T599 Socket Extender)
White baffle.

R1F502W-WH White

Light Bars

Light bars include three Step Cylinder trac heads on a 23" fixed-position bar, offering fast, easy installation.

Three Head Step Cylinder



30-50W R20/35-50W PAR20 Lamps
White baffle. 23" fixed position bar.

R3F511W-WH White

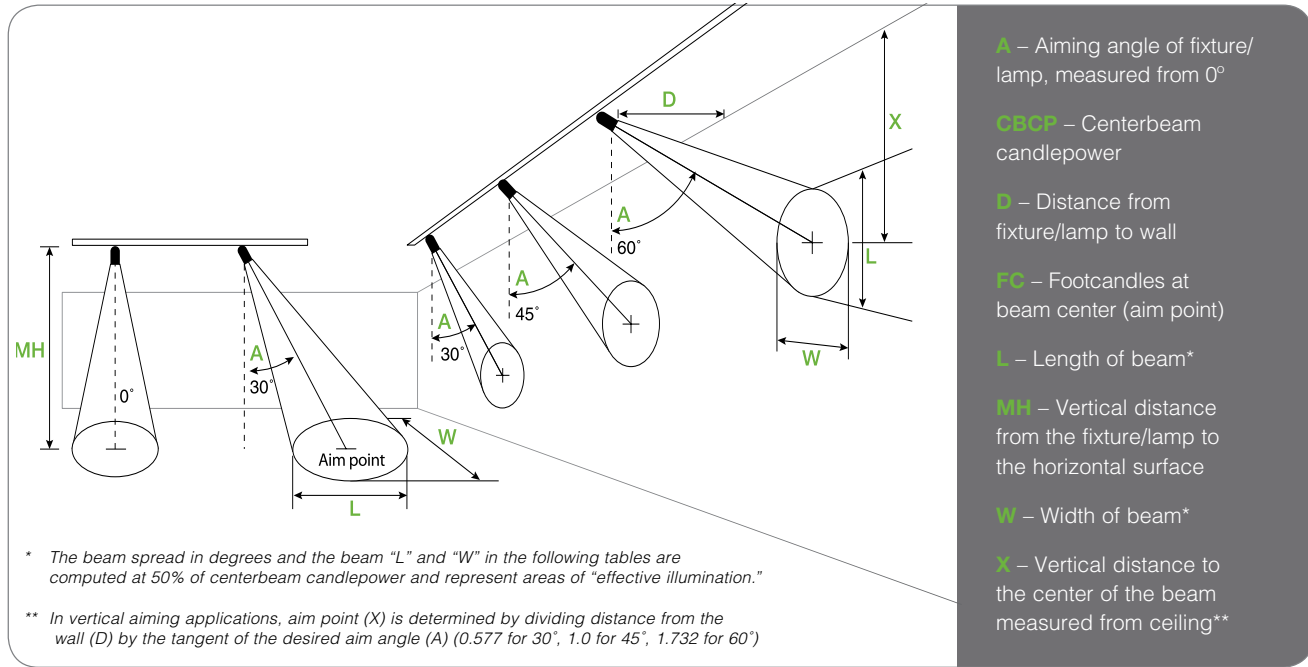




Photometric Data

The photometric charts on the following pages provide illumination levels (FC) and beam size (in feet) for lamps of various wattages and beam patterns. Data is given for lamps aimed at both horizontal and vertical surfaces.

Maximum candlepower and rated life is also indicated for each lamp. Lamp performance is based on bare lamp photometrics provided by lamp manufacturers. Additional information may be obtained from Juno. The below illustration defines the table headings used on the following pages.






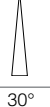

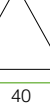

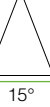










Lamp Data

Lamp	Beam Type	Beam Spread	Rated Life	CBCP	Horizontal Surface												Vertical Surface											
					0 degrees				30 degrees				30 degrees				45 degrees				60 degrees							
					MH	FC	L	W	FC	L	W	D	FC	X	L	W	FC	X	L	W	D	FC	X	L	W			
50W R20 Incandescent	FL	45°	2000	550	2	138	1.7	1.7	89	2.3	1.9	2	17	3.5	13.7	3.3	49	2.0	4.0	2.3	2	89	1.2	2.3	1.9			
					4	34	3.3	3.3	22	4.7	3.8	3	8	5.2	20.5	5.0	22	3.0	6.0	3.5	3	40	1.7	3.5	2.9			
					6	15	5.0	5.0	10	7.0	5.7	4	4	6.9	**	6.6	12	4.0	8.0	4.7	4	22	2.3	4.7	3.8			
					8	9	6.6	6.6	6	9.4	7.7	5	3	8.7	**	8.3	8	5.0	10.0	5.9	5	14	2.9	5.9	4.8			
					10	5	8.3	8.3	4	11.7	9.6	6	2	10.4	**	9.9	5	6.0	12.0	7.0	6	10	3.5	7.0	5.7			
65W BR30 Incandescent	SP	27°	2000	1680	2	420	1.0	1.0	273	1.3	1.1	2	53	3.5	4.6	1.9	148	2.0	2.0	1.4	3	121	1.7	2.0	1.7			
					4	105	1.9	1.9	68	2.6	2.2	3	23	5.2	7.0	2.9	66	3.0	3.1	2.0	4	68	2.3	2.6	2.2			
					6	47	2.9	2.9	30	3.9	3.3	4	13	6.9	9.3	3.8	37	4.0	4.1	2.7	5	44	2.9	3.3	2.8			
					8	26	3.8	3.8	17	5.2	4.4	5	8	8.7	11.6	4.8	24	5.0	5.1	3.4	6	30	3.5	3.9	3.3			
					10	17	4.8	4.8	11	6.5	5.5	6	6	10.4	13.9	5.8	16	6.0	6.1	4.1	7	22	4.0	4.6	3.9			
	FL	60°	2000	510	2	128	2.3	2.3	83	3.5	2.7	1	64	1.7	**	2.3	180	1.0	3.5	1.6	1	331	0.6	1.7	1.3			
					3	57	3.5	3.5	37	5.2	4.0	2	16	3.5	**	4.6	45	2.0	6.9	3.3	2	83	1.2	3.5	2.7			
					4	32	4.6	4.6	21	6.9	5.3	3	7	5.2	**	6.9	20	3.0	10.4	4.9	3	37	1.7	5.2	4.0			
					5	20	5.8	5.8	13	8.7	6.7	4	4	6.9	**	9.2	11	4.0	13.9	6.5	4	21	2.3	6.9	5.3			
					6	14	6.9	6.9	9	10.4	8.0	5	3	8.7	**	11.5	7	5.0	17.3	8.2	5	13	2.9	8.7	6.7			
50W PAR20 Halogen	SP	10°	2500	4600	6	128	1.0	1.0	83	1.4	1.2	2	144	3.5	1.4	0.7	407	2.0	0.7	0.5	3	332	1.7	1.7	0.6			
					8	72	1.4	1.4	47	1.9	1.6	3	64	5.0	2.1	1.0	181	3.0	1.1	0.7	4	187	2.3	0.9	0.8			
					10	46	1.7	1.7	30	2.3	2.0	4	36	6.9	2.9	1.4	102	4.0	1.4	1.0	5	120	2.9	1.2	1.0			
					12	32	2.1	2.1	21	2.8	2.4	5	23	8.7	3.6	1.7	65	5.0	1.8	1.2	6	83	3.5	1.4	1.2			
	FL	30°	2500	1200	4	75	2.1	2.1	49	2.9	2.5	2	38	3.5	5.5	2.1	106	2.0	2.3	1.5	3	87	1.7	2.2	1.9			
					5	48	2.7	2.7	31	3.7	3.1	3	17	5.2	8.2	3.2	47	3.0	3.5	2.3	4	49	2.3	2.9	2.5			
					6	33	3.2	3.2	22	4.4	3.7	4	9	6.9	10.9	4.3	27	4.0	4.6	3.0	5	31	2.9	3.7	3.1			
					7	25	3.8	3.8	16	5.1	4.3	5	6	8.7	13.7	5.4	17	5.0	5.8	3.8	6	22	3.5	4.4	3.7			
8	19	4.3	4.3	12	5.9	5.0	6	4	10.4	16.4	6.4	12	6.0	3.9	4.5	7	16	4.0	5.1	4.3								

Lamp Data



Lamp	Beam Type	Beam Spread	Rated Life	CBCP	Horizontal Surface						Vertical Surface														
					0 degrees			30 degrees			30 degrees					45 degrees					60 degrees				
					MH	FC	L	W	FC	L	W	D	FC	X	L	W	FC	X	L	W	D	FC	X	L	W
75W PAR30 Halogen 	SP	10° 	3000	13000	6	361	1.0	1.0	235	1.4	1.2	3	181	5.2	2.1	1.0	511	3.0	1.1	0.7	7	172	4.0	1.6	1.4
					8	203	1.4	1.4	132	1.9	1.6	4	102	6.9	2.9	1.4	287	4.0	1.4	1.0	8	132	4.6	1.9	1.6
					10	130	1.7	1.7	84	2.3	2.0	5	65	8.7	3.6	1.7	184	5.0	1.8	1.2	9	104	5.2	2.1	1.8
					12	90	2.1	2.1	59	2.8	2.4	6	45	10.4	4.3	2.1	128	6.0	2.1	1.5	10	84	5.8	2.3	2.0
	14	66	2.4	2.4	43	3.3	2.8	7	33	12.1	5.0	2.4	94	7.0	2.5	1.7	11	70	6.4	2.6	2.2				
	NFL	25° 	3000	3100	4	194	1.8	1.8	126	2.4	2.0	2	97	3.5	4.2	1.8	274	2.0	1.9	1.3	3	224	1.7	1.8	1.5
					6	86	2.7	2.7	56	3.6	3.1	3	43	5.2	6.2	2.7	122	3.0	2.8	1.9	4	126	2.3	2.4	2.0
					8	48	3.5	3.5	31	4.8	4.1	4	24	6.9	8.3	3.5	69	4.0	3.7	2.5	5	81	2.9	3.0	2.6
					10	31	4.4	4.4	20	6.0	5.1	5	16	8.7	10.4	4.4	44	5.0	4.7	3.1	6	56	3.5	3.6	3.1
	14	66	2.4	2.4	43	3.3	2.8	6	11	10.4	12.5	5.3	30	6.0	5.6	3.8	7	41	4.0	4.2	3.6				
	FL	35° 	3000	2000	4	125	2.5	2.5	81	3.5	2.9	2	63	3.5	7.2	2.5	177	2.0	2.8	1.8	3	144	1.7	2.6	2.2
					6	56	3.8	3.8	36	5.2	4.4	3	28	5.2	10.8	3.8	79	3.0	4.2	2.7	4	81	2.3	3.5	2.9
8					31	5.0	5.0	20	7.0	5.8	4	16	6.9	14.4	5.0	44	4.0	5.6	3.6	5	52	2.9	4.3	3.6	
10					20	6.3	6.3	13	8.7	7.3	5	10	8.7	18.0	6.3	28	5.0	7.0	4.5	6	36	3.5	5.2	4.4	
12	14	7.6	7.6	9	10.4	8.7	6	7	10.4	21.6	7.6	20	6.0	8.4	5.4	7	27	4.0	6.1	5.1					
120W PAR38 Halogen 	SP	10° 	3000	22500	10	225	1.7	1.7	146	2.3	2.0	4	176	6.9	2.9	1.4	497	4.0	1.4	1.0	6	406	3.5	0.9	0.8
					12	156	2.1	2.1	101	2.8	2.4	6	78	10.4	4.3	2.1	221	6.0	2.1	1.5	9	180	5.2	1.4	1.2
					14	115	2.4	2.4	75	3.3	2.8	8	44	13.9	5.7	2.8	124	8.0	2.8	2.0	12	101	6.9	1.9	1.6
					16	88	2.8	2.8	57	3.7	3.2	10	28	17.3	7.2	3.5	80	10.0	3.5	2.5	15	65	8.7	2.3	2.0
	18	69	3.1	3.1	45	4.2	3.6	12	20	20.8	8.6	4.2	55	12.0	4.2	3.0	18	45	10.4	2.8	2.4				
	FL	30° 	3000	4600	8	72	4.3	4.3	47	5.9	5.0	2	144	3.5	5.5	2.1	407	2.0	2.3	1.5	3	332	1.7	1.5	1.2
					10	46	5.4	5.4	30	7.3	6.2	4	36	6.9	10.9	4.3	102	4.0	4.6	3.0	4	187	2.3	2.9	2.5
					12	32	6.4	6.4	21	8.8	7.4	6	16	10.4	16.4	6.4	45	6.0	6.9	4.5	6	83	3.5	4.4	3.7
					14	23	7.5	7.5	15	10.2	8.7	8	9	13.9	21.9	8.6	25	8.0	9.2	6.1	8	47	4.6	5.9	5.0
	16	18	8.6	8.6	12	11.7	9.9	10	6	17.3	**	10.7	16	10.0	11.5	7.6	10	30	5.8	7.3	6.2				
	WFL	50° 	3000	2000	6	56	5.6	5.6	36	8.0	6.5	2	63	3.5	21.5	3.7	177	2.0	4.8	2.6	2	325	1.2	2.7	2.2
					8	31	7.5	7.5	20	10.7	8.6	3	28	5.2	**	5.6	79	3.0	7.2	4.0	3	144	1.7	4.0	3.2
10					20	9.3	9.3	13	13.4	10.8	4	16	6.9	**	7.5	44	4.0	9.5	5.3	4	81	2.3	5.4	4.3	
12					14	11.2	11.2	9	16.1	12.9	5	10	8.7	**	9.3	28	5.0	11.9	6.6	5	52	2.9	6.7	5.4	
14	10	13.1	13.1	7	18.8	15.1	6	7	10.4	**	11.2	20	6.0	14.3	7.9	6	36	3.5	8.0	6.5					
20W MR16 12V Halogen Lensed 	FL	40° 	5000	475	3	53	2.2	2.2	34	3.0	2.5	1	59	1.7	4.8	1.5	168	1.0	1.7	1.0	2	77	1.2	2.0	1.7
					5	19	3.6	3.6	12	5.1	4.2	2	15	3.5	9.7	2.9	42	2.0	3.4	2.1	3	34	1.7	3.0	2.5
					7	10	5.1	5.1	6	7.1	5.9	3	7	5.2	14.5	4.4	19	3.0	5.0	3.1	4	19	2.3	4.1	3.4
					9	6	6.6	6.6	4	9.1	7.6	4	4	6.9	19.3	5.8	10	4.0	6.7	4.1	5	12	2.9	5.1	4.2
					11	4	8.0	8.0	3	11.2	9.2	5	2	8.7	24.2	7.3	7	5.0	8.4	5.1	6	9	3.5	6.1	5.0
					11	4	8.0	8.0	3	11.2	9.2	5	2	8.7	24.2	7.3	7	5.0	8.4	5.1	6	9	3.5	6.1	5.0
50W MR16 Halogen 	NSP	15° 	6000	9100	6	253	1.6	1.6	164	2.1	1.8	3	126	5.2	3.3	1.6	357	3.0	1.6	1.1	6	164	3.5	1.1	0.9
					8	142	2.1	2.1	92	2.8	2.4	4	71	6.9	4.4	2.1	201	4.0	2.1	1.5	7	121	4.0	1.4	1.2
					10	91	2.6	2.6	59	3.5	3.0	5	46	8.7	5.6	2.6	129	5.0	2.7	1.9	8	92	4.6	1.8	1.5
					12	63	3.2	3.2	41	4.2	3.6	6	32	10.4	6.7	3.2	89	6.0	3.2	2.2	9	73	5.2	2.1	1.8
	14	46	3.7	3.7	30	4.9	4.3	7	23	12.1	7.8	3.7	66	7.0	3.8	2.6	10	59	5.8	2.5	2.1				
	NFL	25° 	6000	3200	4	200	1.8	1.8	130	2.4	2.0	2	100	3.5	4.2	1.8	283	2.0	1.9	1.3	4	130	2.3	1.2	1.0
					6	89	2.7	2.7	58	3.6	3.1	3	44	5.2	6.2	2.7	126	3.0	2.8	1.9	5	83	2.9	1.8	1.5
					8	50	3.5	3.5	32	4.8	4.1	4	25	6.9	8.3	3.5	71	4.0	3.7	2.5	6	58	3.5	2.4	2.0
					10	32	4.4	4.4	21	6.0	5.1	5	16	8.7	10.4	4.4	45	5.0	4.7	3.1	7	42	4.0	3.0	2.6
	12	22	5.3	5.3	14	7.2	6.1	6	11	10.4	12.5	5.3	31	6.0	5.6	3.8	8	32	4.6	3.6	3.1				
	FL	40° 	6000	1700	3	189	2.2	2.2	123	3.0	2.5	2	53	3.5	9.7	2.9	150	2.0	3.4	2.1	3	123	1.7	2.0	1.7
					4	106	2.9	2.9	69	4.1	3.4	3	24	5.2	14.5	4.4	67	3.0	5.0	3.1	4	69	2.3	3.0	2.5
6					47	4.4	4.4	31	6.1	5.0	4	13	6.9	19.3	5.8	38	4.0	6.7	4.1	5	44	2.9	4.1	3.4	
8					27	5.8	5.8	17	8.1	6.7	5	9	8.7	24.2	7.3	24	5.0	8.4	5.1	6	31	3.5	5.1	4.2	
10	17	7.3	7.3	11	10.2	8.4	6	6	10.4	**	8.7	17	6.0	10.1	6.2	7	23	4.0	6.1	5.0					
50W MR16 Halogen IR Lensed 	SP	10° 	5000	15000	6	417	1.0	1.0	271	1.4	1.2	3	208	5.2	2.1	1.0	589	3.0	1.1	0.7	6	271	3.5	0.7	0.6
					8	234	1.4	1.4	152	1.9	1.6	4	117	6.9	2.9	1.4	331	4.0	1.4	1.0	7	199	4.0	0.9	0.8
					10	150	1.7	1.7	97	2.3	2.0	5	75	8.7	3.6	1.7	212	5.0	1.8	1.2	8	152	4.6	1.2	1.0
					12	104	2.1	2.1	68	2.8	2.4	6	52	10.4	4.3	2.1	147	6.0	2.1	1.5	9	120	5.2	1.4	1.2
	14	77	2.4	2.4	50	3.3	2.8	7	38	12.1	5.0	2.4	108	7.0	2.5	1.7	10	97	5.8	1.6	1.4				
	NFL	25° 	5000	5700	4	356	1.8	1.8	231	2.4	2.0	2	178	3.5	4.2	1.8	504	2.0	1.9	1.3	4	231	2.3	1.2	1.0
					6	158	2.7	2.7	103	3.6	3.1	3	79	5.2	6.2	2.7	224	3.0	2.8	1.9	5	148	2.9	1.8	1.5
					8	89	3.5	3.5	58	4.8	4.1	4	45	6.9	8.3	3.5	126	4.0	3.7	2.5	6	103	3.5	2.4	2.0
					10	57	4.4	4.4	37	6.0	5.1	5	29	8.7	10.4	4.4	81	5.0	4.7	3.1	7	76	4.0	3.0	2.6
	12	40	5.3	5.3	26	7.2	6.1	6	20	10.4	12.5	5.3	56	6.0	5.6	3.8	8	58	4.6	3.6	3.1				
	FL	35° 	5000	2850	3	317	1.9	1.9	206	2.6	2.2	2	89	3.5	7.2	2.5	252	2.0	2.8	1.8	3	206	1.7	1.7	1.5
					4	178	2.5	2.5	116	3.5	2.9	3	40	5.2	10.8	3.8	112	3.0	4.2	2.7	4	116	2.3		

Juno[®]
Recessed and Trac Lighting

indy[™]
Architectural Recessed Lighting

AccuLite[®]
Commercial and Industrial Lighting

AcuLux[™]
Precision Recessed Lighting

Navilite[®]
Exit and Emergency Lighting

DanaLite
Architectural Linear Lighting



Juno Lighting Group
1300 South Wolf Road
Des Plaines, IL 60018
Ph: 847.827.9880
www.junolightinggroup.com

Regional Offices & Warehouses

California
Illinois
Indiana
Pennsylvania
Texas
Ontario, CN

©2016 Acuity Brands Lighting, Inc. The marks appearing in this catalog are trademarks of Acuity Brands Lighting, Inc. Products shown in this brochure may be covered by U.S. and international patents and patents pending. Specifications subject to change without notice.