

Installation of Barn Door (T74BL) or Snoot (SNOOTBL 175) to Fixtures with Bezel

1. Remove clear lens (if provided) from bezel.
2. Attach (T74BL) barn door by bending mounting tabs (4) over lower edge of bezel (Figure A). Use screwdriver to depress, as shown.
3. Replace clear lens (if provided) to bezel.

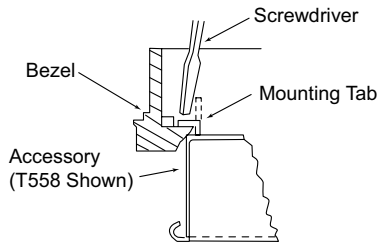


Figure A

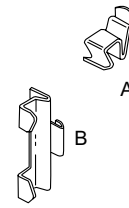


Figure B

Installation of Barn Door (T74BL) to T430 or T431 Wireforms

1. Locate clip A, included (Figure B).
2. Position adapter clip A on backside or barn door, as shown (Figure C).
3. Fit bottom clip over lower wireform (Figure D) and rotate barn door toward wireform engaging top clip with upper wireform (Figure E).
4. Align clips and barn door with faceplate center lines.

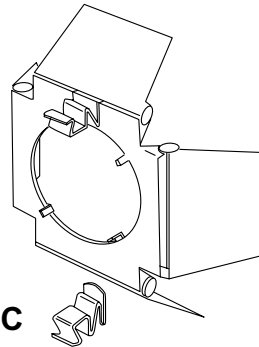


Figure C

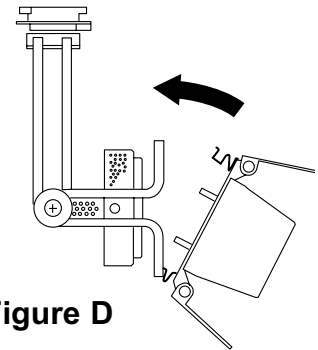


Figure D

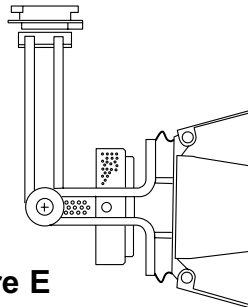


Figure E

WARRANTY

5-year limited warranty. Complete warranty terms located at www.acuitybrands.com/CustomerResources/Terms_and_conditions.aspx

Technical Services Phone (888) 387-2212