

# Undercabinet Solo-Task LED Lighting

Ultra-compact, super-efficient luminaires for task and accent lighting







Surface Mount



Recessed Mount

## Juno® Undercabinet Solo-Task LED Lighting

Miniature luminaire offers powerful illumination

Juno Solo-Task LED luminaires are the mighty-mite of undercabinet lighting. At less than 3" in diameter and a low 9/16" profile, they fit unobtrusively under cabinets and shelves, yet can produce over 280 lumens of brilliant white light for task and accent illumination.

Kitchen counters, work surfaces, retail displays ... all are ideal applications for this unique little light. Solo-Task LED luminaires feature quick and easy surface or recessed mounting and create high-quality, even, color-consistent illumination, with light levels comparable to 25-watt halogen or xenon. They can be installed wherever light is needed and easily connected in daisy-chain fashion to provide uniform illumination.

It's almost a shame to hide these attractive little lights. Solo-Task LED luminaires are stylish and contemporary, and the die-cast aluminum housings are available in four beautiful finishes ... designer white, satin nickel, brushed bronze and black. They are the perfect enhancement to a wide variety of residential and commercial decors.



# The LED Advantage

Juno® Solo-Task LED luminaires are more than space savers; they're energy savers, too. At just 3.8-watts, they consume less than one-fifth the energy of equivalent halogen or xenon light sources and generate significantly less heat. With no IR emissions in the beam, LEDs are far cooler in operation, and with no UV rays, they are ideal for fade-free illumination of light-sensitive materials. An exceptionally long service life of 50,000 hours assures many years of maintenance-free use.



Remarkably small and thin,  
Juno Solo-Task LED luminaires  
can produce over 280 lumens

2-1/2" x 9/16"









# Superior Optics

A great deal of sophisticated technology has been packed into this tiny luminaire. Instead of using multiple discreet LEDs, the Juno Solo-Task luminaire features a white-phosphor LED array that acts as a single light source. Combined with a high-transmission diffusing lens, the result is exceptionally smooth, uniform aperture luminance. Thanks to this technology, the Solo-Task LED casts a single, soft shadow rather than the distracting multiple shadows often encountered with similar style luminaires on the market. Below is a visual comparison of the Juno Solo-Task LED versus two leading competitors.

Competitor #1



Competitor #2



Juno Solo-Task LED



Solo-Task LED produces a wide, even light pattern with a color temperature of 3000K and CRI of 85. The luminaires are fully dimmable using factory qualified dimmers\*.

Diminutive luminaire dimensions and uniform, color-consistent performance open up a wide variety of retail accent lighting possibilities.

\*See fixture specification sheets for further details.

# Juno® Undercabinet Solo-Task LED Lighting

## Finishes

Juno® Solo-Task LEDs can be surface (shown) or recessed mounted and come in your choice of four stylish finishes.



White



Brushed Bronze



Satin Nickel



Black

## Ordering Information

### Juno Undercabinet Solo-Task LED Fixtures

Model	Color Temperature	CRI	Shade Finish
<b>USTL1</b> Surface Mount	<b>30K</b> 3000K	<b>80CRI</b> 80 CRI	<b>BL</b> Black <b>BZ</b> Brushed Bronze
<b>USTLR1</b> Recessed Mount			<b>SN</b> Satin Nickel <b>WH</b> White

### Electrical Data

<b>USTL1 30K/USTLR1 30K</b>	
Total input power (watts)*	3.8
Lumens	286
Efficacy (lumens/watt)	74.5

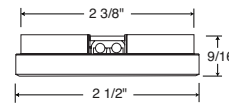
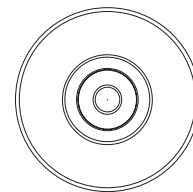
\* Solo-Task LED input power – additional losses vary depending upon transformer and system loading.

### Juno Undercabinet Solo-Task LED Kits

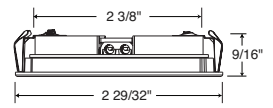
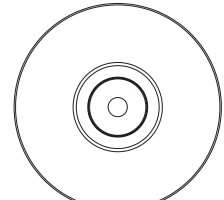
Each Kit includes:

3 Surface Mount Luminaires, 1 Plug-in Driver/Transformer with field installed switch, 10-feet of wire, and 5-adhesive backed wire clips

<b>UK3STL 30K 80CRI BL</b>	Black Face/Black Base	3000K
<b>UK3STL 30K 80CRI BZ</b>	Brushed Bronze Face/Black Base	3000K
<b>UK3STL 30K 80CRI SN</b>	Satin Nickel Face/Black Base	3000K
<b>UK3STL 30K 80CRI WH</b>	White Face/White Base	3000K

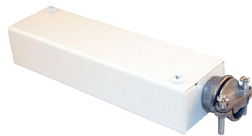


Surface Mount (USTL1)



Recessed Mount (USTLR1)  
2-3/4" cutout

## Drivers/Transformers



Catalog #	Finish	Description
<b>TL602E 10W 120 12AC WH</b>	White	10W 12V AC (Class-2) Electronic Driver/Transformer
<b>TL602E 25W 120 12AC WH</b>	White	25W 12V AC (Class-2) Electronic Driver/Transformer
<b>TL602E 60W 120 12AC WH</b>	White	60W 12V AC (Class-2) Electronic Driver/Transformer

**Ordering Options** (Add to catalog number prior to finish)

Catalog #	Finish	Description
<b>6CP</b>	White	6ft. Cord & Plug, factory installed



Catalog #	Finish	Description
<b>TL548 LED 60W 120 12AC WH</b>	White	60W 12V AC (Class-2) Plug-in Electronic Driver/Transformer
<b>TL548 LED 60W 120 12AC BL</b>	Black	60W 12V AC (Class-2) Plug-in Electronic Driver/Transformer



Catalog #	Finish	Description
<b>MAGXFMR 1C 10W 120 12AC BL</b>	Black	10W 12V AC (Class-2) Magnetic Driver/Transformer
<b>MAGXFMR 1C 25W 120 12AC BL</b>	Black	25W 12V AC (Class-2) Magnetic Driver/Transformer
<b>MAGXFMR 1C 60W 120 12AC BL</b>	Black	60W 12V AC (Class-2) Magnetic Driver/Transformer

The Solo-Task LED luminaire offering is a low voltage system. As such, voltage drop is an inherent characteristic. Refer to the Solo-Task LED specification sheet or installation instructions for system run lengths utilizing the above driver/transformers to ensure optimal system performance.

## Ordering Information

### Accessories



Catalog #	Description
<b>UST18G 10FT WH</b>	18AWG 2-Conductor Parallel Bonded Wire, 10-Feet, White
<b>UST18G 25FT WH</b>	18AWG 2-Conductor Parallel Bonded Wire, 25-Feet, White
<b>UST18G 10FT BL</b>	18AWG 2-Conductor Parallel Bonded Wire, 10-Feet, Black
<b>UST18G 25FT BL</b>	18AWG 2-Conductor Parallel Bonded Wire, 25-Feet, Black
<b>USTREC BL</b>	Kit to convert USTL1 Surface Mount to USTLR1 Recessed Mount, Black
<b>USTREC BZ</b>	Kit to convert USTL1 Surface Mount to USTLR1 Recessed Mount, Brushed Bronze
<b>USTREC SN</b>	Kit to convert USTL1 Surface Mount to USTLR1 Recessed Mount, Satin Nickel
<b>USTREC WH</b>	Kit to convert USTL1 Surface Mount to USTLR1 Recessed Mount, White
<b>USTSHIELD WH</b>	Solo-Task Shield, White
<b>USTSHIELD BL</b>	Solo-Task Shield, Black
<b>USTSNOOT WH</b>	Solo-Task Snoot, White
<b>USTSNOOT BL</b>	Solo-Task Snoot, Black



## Convenient Kits

Kits include three surface mount luminaires, plug-in driver/transformer, switch, wire and clips.



# Juno<sup>®</sup> Undercabinet Solo-Task LED Luminaires

Ideal for residential, retail,  
healthcare, hospitality and  
many other accent and  
task lighting applications



©2017 Acuity Brands Lighting, Inc. The marks appearing in this catalog are trademarks of Acuity Brands Lighting, Inc. Products shown in this brochure may be covered by U.S. and international patents and patents pending. Specifications subject to change without notice. Printed in the U.S.A.