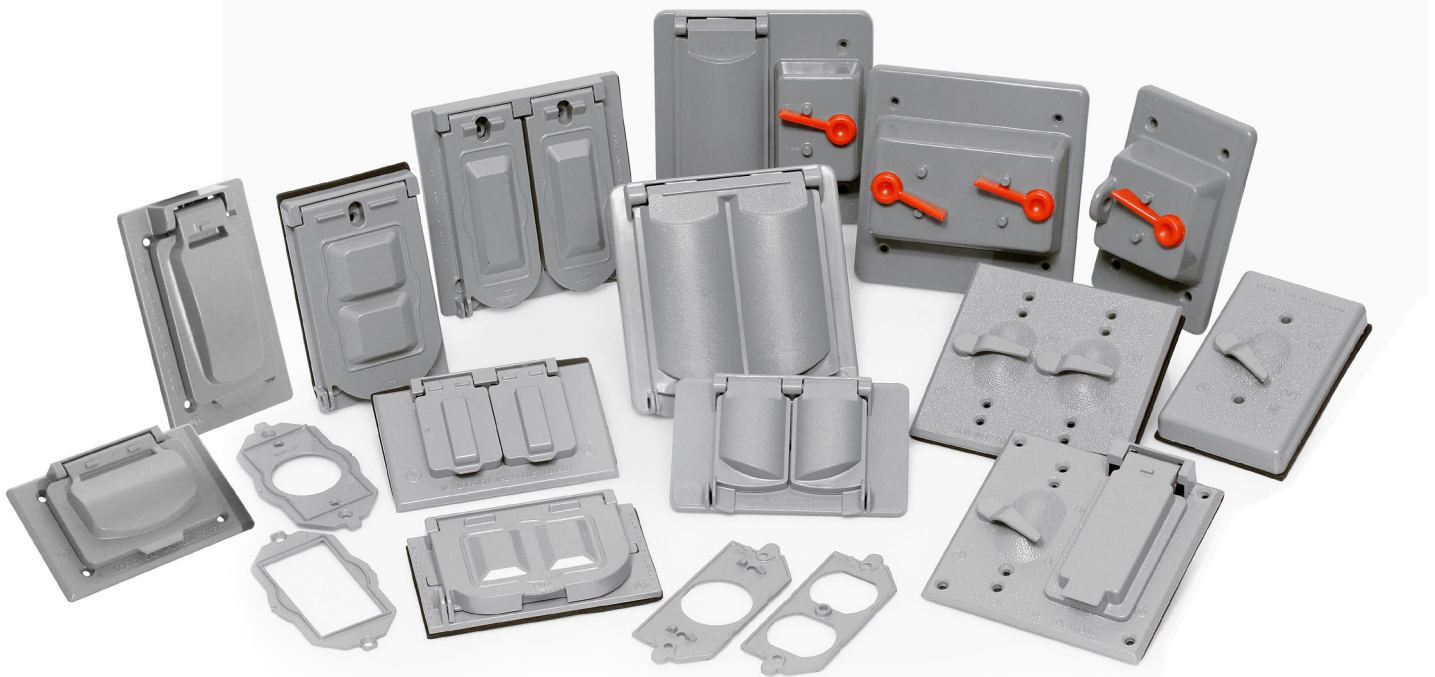


# Weatherproof Device Covers & Boxes

The Leviton offering of Weatherproof Covers & Boxes comprises both 1- and 2-gang configurations that comply with the National Electric Code® (2017) Section 406.9 for weatherproof enclosures in damp and wet locations.



# Weatherproof Device Covers



## Key Features

- Complies with NEC® 2017 Section 406.9(A) for weatherproof enclosures in damp locations
- Heavy-duty gasket provides a weatherproof seal which protects from moisture and adds to ease of installation
- Three easy-to-install molded adapter plates for use with Toggle Switches, Duplex Receptacles, Decora®/GFCI and Single Receptacle devices
- Safety lockout feature to prevent unauthorized use available on some models

## Ordering Information

Gang	Device Type	Mount	Color	Metallic	Plastic
Single Gang	Switch	Vertical or Horizontal	Gray	WM1S-GY	WP1S-GY
	Duplex Receptacle	Horizontal, Oversized	Gray	—	4986-GY
		Vertical or Horizontal	Gray	WM1D-GY	WP1D-GY
		Horizontal	Gray	—	4976-GY
		Horizontal	White	—	4976-W
		Horizontal, FS Box Mount	Gray	—	4976-FS
		Vertical	Gray	—	4978-GY
		Vertical	White	—	4978-W
	Duplex and Single Receptacle; Includes Inserts for Decora®/GFCI	Horizontal	Gray	WM1H-GY	—
		Vertical	Gray	WM1V-GY	—
	Decora®/GFCI Receptacle	Horizontal	Gray	—	4996-GY
		Horizontal	White	—	4996-W
		Vertical	Gray	—	4998-GY
		Vertical	White	—	4998-W
		Horizontal, FS Box Mount	Gray	WM1HF-GY	—
Vertical, FS Box Mount		Gray	WM1VF-GY	—	
Single Receptacle; 1.406" Hole	Vertical	Gray	—	4979-GY	
Single Receptacle; 1.60" Hole	Vertical	Gray	—	4980-GY	
Two Gang	Switch	Vertical or Horizontal	Gray	WM2S-GY	WP2S-GY
	Duplex and Single Receptacle; Includes Inserts for Decora®/GFCI	Vertical or Horizontal	Gray	WM2V-GY	WP2V-GY
	Switch & GFCI	Vertical or Horizontal	Gray	WM2SG-GY	WP2SG-GY
	Switch & Duplex Receptacle	Vertical or Horizontal	Gray	WM2SD-GY	WP2SD-GY

# Weatherproof Outlet Box Hoods (While-In-Use Covers)



## Key Features

- Compliant with NEC® 2017 Section 406.9(B)(1)
- Safety lockout feature to prevent unauthorized use
- Pre-installed weatherproof gasket features custom fit inserts allowing for an easy to use installation
- Extra duty models meet or exceed the most stringent impact resistance tests required in UL 514D for Extra Duty Outlet Box Hoods, ensuring maximum safety in abusive environments

## Ordering Information

Gang	Device Type	Mount	Material/Color	Catalog #
Single Gang	Extra Duty; Includes Inserts for Single, Duplex and Decora/GFCI Receptacles	Horizontal Device Mount	Metal/Gray	IUM1H-GY
	Extra Duty; Includes Inserts for Single, Duplex and Decora/GFCI Receptacles	Vertical Device Mount	Metal/Gray	IUM1V-GY
	Duplex Receptacle	Horizontal Device Mount	Plastic/Gray	5996-GY*
			Plastic/Clear	5996-CL*
	Duplex Receptacle	Vertical Device Mount	Plastic/Gray	5976-GY*
			Plastic/Clear	5976-CL*
	Duplex Receptacle, Extra Deep Lid	Horizontal Device Mount	Plastic/Gray	5996-DGY*
			Plastic/Gray	5976-DGY*
Duplex Receptacle, Extra Deep Lid	Vertical Device Mount	Plastic/Clear	5976-DCL*	
		Plastic/Gray	5978-GY*	
Single Receptacle (1.406" Hole)	Vertical Device Mount	Plastic/Clear	5978-CL*	
		Plastic/Gray	5978-DGY*	
Single Receptacle (1.406" Hole), Extra Deep Lid	Vertical Device Mount	Plastic/Clear	5978-DCL*	
		Plastic/Gray	5978-DCL*	
Two Gang	Extra Duty; Includes Inserts for Single, Duplex and Decora/GFCI Receptacles	Vertical Device Mount	Metal/Gray	IUM2V-GY

\*Does not meet Extra Duty ratings

# Weatherproof Boxes

## Key Features

- Constructed of heavy duty die-cast aluminum
- Includes ground screw, mounting hardware and inserts to cover unused openings to prevent insects and debris from entering the box



## Ordering Information

Description		Catalog #
Single Gang	Three 1/2" Diameter Outlets, Gray	1GM53-GY
	Three 3/4" Diameter Outlets, Gray	1GM73-GY
Two Gang	Three 1/2" Diameter Outlets, Gray	2GM53-GY
	Five 1/2" Diameter Outlets, Gray	2GM55-GY
	Three 3/4" Diameter Outlets, Gray	2GM73-GY
	Five 3/4" Diameter Outlets, Gray	2GM75-GY

# Weatherproof Blank Plates

## Key Features

- Equipped with heavy-duty weatherproof gasket to seal out moisture



## Ordering Information

Description		Catalog #
Single Gang	Gray	WM1B-GY
Two Gang	Gray	WM2B-GY

Visit our Website at:

[www.leviton.com/weatherproofcovers](http://www.leviton.com/weatherproofcovers)

email: [commercial@leviton.com](mailto:commercial@leviton.com)

Q-1015B

022417

**Leviton Manufacturing Co., Inc.**

201 N Service Rd, Melville, NY 11747

Telephone: 1-800-323-8920 • FAX: 1-800-832-9538

Tech Line (8:30AM-7:30PM E.S.T. Monday-Friday): 1-800-824-3005

© 2016 Leviton Manufacturing Co., Inc. All rights reserved.

