

DN ROBUST DECONTACTOR™ 20 A / 30 A / 50 A / 90 A / 150 A

- ▶ AUTOMATIC IP54/IP55 WATER- AND DUST-TIGHT
- ▶ IMPACT-RESISTANT METAL CASING
- ▶ SUITABLE FOR HEAVY INDUSTRY

The DN family of decontactors cover ratings from 30 to 150 A (ratings specified by IEC 60309-1). DN decontactors offer safety and reliability in heavy duty environments. The metal casings and accessories are anticorrosion treated.

■ SILVER-NICKEL BUTT CONTACTS

MARECHAL® products are manufactured with high-quality materials adapted to suit harsh environments. They are fitted with spring-loaded butt contacts guaranteeing a permanent and long-lasting connection. Silver-nickel tips, at the end of each contact, ensure high-quality electrical performance and excellent resistance to humid and corrosive environments, even after years of use.





SPECIFICATION

Metal-bodied plug and socket-outlet with integral switching device AC-22, silver-nickel butt contacts with metallic braid, comply with BECMA international standard.

TECHNICAL FEATURES

Plugs and sockets with integral load-break switching capability according to IEC EN 60947-3.

	DN8	DN1	DN3	DN6	DN9
Rated current (In)	20 A	30 A	50 A	90 A	150 A
Umax	500 V	500 V	500 V	500 V	440 V
AC-22 switching capability	20 A / 400 V	30 A / 400 V	50 A / 400 V	90 A / 400 V	150 A / 400 V
Auxiliary contacts (optional)	-	-	-	4	-
Keying positions ⁽¹⁾	16	16	16	16	4
Ambient temperature	-40 °C to +60 °C for all DN				

⁽¹⁾ To distinguish between different power supplies and applications

STANDARDS ASPECTS

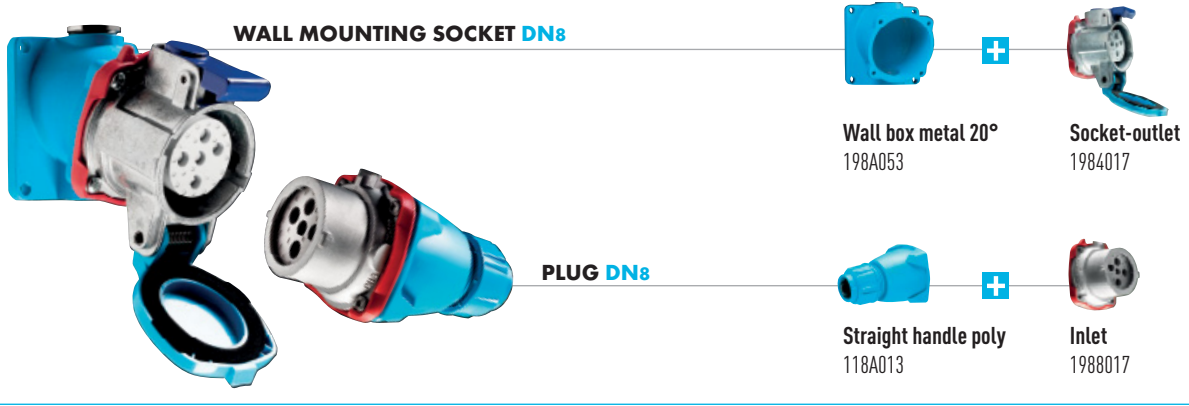
DN decontactors comply with:

- The essential requirements of IEC EN 60309-1 & IEC EN 60309-4 European and International standards (plugs and socket-outlets for industrial purposes),
- The European Low Voltage Directive 2006/95/CE,
- The European 'Machine Directive' 2006/42/CE regarding equipment isolation,
- The French NF C 15-100 standard,
- The French decree dated 20 December 2011 pertaining to the wiring and operating conditions of movable electrical apparatuses,
- The decrees relating to workers' protection in Belgium, Spain and Italy,
- The load-break capability for AC-22 category described in IEC EN 60947-3.

Also certified by TR CU (GOST) (Russian inspection laboratory).

EAC

TYPICAL CONFIGURATION



MAIN FEATURES

Rated current (with wiring according to standard)	20 A	Ambient temperature	-40 °C to +60 °C
Maximum voltage	500 V	Flexible wiring (min-max)	1 - 6 mm ²
IP protection lid closed	IP55	Solid or stranded wiring (min-max)	1,5 - 10 mm ²
IP protection connected plug	IP54	Other wiring	on request
Shock resistance (poly casing)	IK08	Keying positions	16
Shock resistance (metal casing)	IK09		

LOAD-BREAK CAPABILITY OF THE DECONTACTOR™

Comply with IEC EN 60309-1 and IEC EN 60309-4 standards	20 A / 500 V
Load-break capability according to IEC EN 60947-3 / AC-22A	(20 A / 400 V) or (10 A / 500 V)

DUAL VOLTAGE SOCKET-OUTLET
(SEE P.8)

Voltage 50 Hz	Polarity	Part no.*	Part no.*
20 - 24 V	2P	198408A	198808A
190 - 230 V	3P+E	1984033	1988033
220 - 250 V	1P+N+E	1984015	1988015
380 - 440 V	3P+E	1984013	1988013
220 - 250 V 380 - 440 V	3P+N+E	1984017	1988017
480 - 500 V	3P+E	1984093	1988093
480 - 500 V	3P+N+E	1984097	1988097

► Other voltages, frequencies and contact configurations are available (see page 10).

* The listed Part nos. call up metal casings. For GRP casings, replace prefix 19 by 11

BOXES

Cable gland not included



Wall box metal 20°



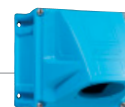
Wall box poly 30°



Wall box metal + Inclined metal 30°



Wall box metal + straight metal sleeve



Wall box poly + Inclined poly 70°

Entry	198A053	118A053	198A653	198A095	
M20	198A053	118A053	198A653	198A095	
M25			198A653418	198A095418	Not drilled and without cable gland Part no. 51BA058
M32			198A653419	198A095419	
M40			198A653420	198A095420	

SLEEVES



Inclined poly 30°

118A027



Inclined metal 30°

198A027



Inclined poly 70°

51BA757



Straight metal

198A127

HANDLES



Straight poly

5-21 mm 118A013



Straight poly with poly cable gland

5-12 mm

198A753



Straight metal with metal cable gland

7-13 mm

198A963



Straight poly without cable gland with metric threaded entry

M20

198A253417

5-21 mm	118A013	5-12 mm	198A753	7-13 mm	198A963	M20	198A253417
		9-18 mm	198A25325P	8-16 mm	198A95325M	M25	198A253418
		14-25 mm	198A25332P			M32	198A253419
		18-32 mm	198A25340P			M40	198A253420

INDUSTRIAL-DOMESTIC ADAPTERS



Industrial inlet MARECHAL® 1P+N+E + domestic socket outlet 10/16 A 230V.

Type	Material	Part no.
France	GRP	1188015D11
France	Metal	1988015D11
UK	GRP	1188015D40
UK	Metal	1988015D40
Germany	GRP	1188015D30
Germany	Metal	1988015D30
Italy	GRP	1188015D06
Italy	Metal	1988015D06

ACCESSORIES & OPTIONS

Locking with shaft for 3 padlocks ø 8 mm (padlocks not supplied)

Socket no. + 844

Lockable plug: contact us

Padlocking device 1 to 6 padlocks
873A541

E-Stop button

Socket no. + 453

Inlet cap

198A126

180° opening lid

Self-returning lid

180° opening and self-returning lid

IP66/IP67 metal bodies (socket & inlet)

Socket no. + 10

Socket no. + R

Socket no. + 18

Part no. + 600



TYPICAL CONFIGURATION

WALL MOUNTING SOCKET DN1



PLUG DN1





	+	
Wall box metal 20° 191A053		Socket-outlet 1914017
+		
	+	
Straight handle poly 191A013		Inlet 1918017

MAIN FEATURES

Rated current (with wiring according to standard)	30 A	Ambient temperature	-40 °C to +60 °C
Maximum voltage	500 V	Flexible wiring (min-max)	2,5 - 6 mm ²
IP protection lid closed	IP55	Stranded wiring (min-max)	2,5 - 10 mm ²
IP protection connected plug	IP54	Other wiring	on request
Shock resistance (metal casing)	IK09	Keying positions	16

LOAD-BREAK CAPABILITY OF THE DECONTACTOR™

Comply with IEC EN 60309-1 and IEC EN 60309-4 standards	30 A / 500 V
Load-break capability according to IEC EN 60947-3 / AC-22A	(30 A / 400 V) or (16 A / 500 V)

Voltage 50 Hz	Polarity	Part no.	SOCKET-OUTLET female DN1 (30 A)	INLET male DN1 (30 A)
				
20 - 24 V	2P	191408A		191808A
190 - 230 V	3P+E	1914033		1918033
220 - 250 V	1P+N+E	1914015		1918015
380 - 440 V	3P+E	1914013		1918013
220 - 250 V 380 - 440 V	3P+N+E	1914017		1918017
480 - 500 V	3P+E	1914093		1918093
480 - 500 V	3P+N+E	1914097		1918097

DUAL VOLTAGE SOCKET-OUTLET (SEE P.8)

► Other voltages, frequencies and contact configurations are available (see page 10).

BOXES

Cable gland not included



Wall box metal 20°

Wall box metal + Inclined metal 70°

Wall box metal + Inclined metal 30°

Wall box metal + straight metal sleeve

Entry				
M20	191A053	873A053417	191A653	191A095
M25	191A053418	873A053	191A653418	191A095418
M32	191A053419	873A053419	191A653419	191A095419
M40		873A053420	191A653420	191A095420

SLEEVES



Inclined metal 30°

Inclined metal 70°

Straight metal

191A027	873A087	191A127
---------	---------	---------

HANDLES



Straight poly

Straight poly with poly cable gland

Straight metal with metal cable gland

Straight poly without cable gland with metric threaded entry

10-30 mm	191A013	5-12 mm	191A753	7-13 mm	191A963	M20	191A253417
10-30 mm	191A473*	9-18 mm	191A25325P	8-16 mm	191A95325M	M25	191A253418
		14-25 mm	191A25332P	16-24 mm	191A95332M	M32	191A253419
		18-32 mm	191A25340P	22-32 mm	191A95340M	M40	191A253420

*With built-in finger draw plate (recommended for inline connections)

ACCESSORIES & OPTIONS

Locking with shaft for 3 padlocks
 ø 8 mm (padlocks not supplied)

Socket no. + 844

Lockable plug: contact us

Padlocking device 1 to 6 padlocks
 873A541



E-Stop button

Socket no. + 453



Inlet cap

191A126



180° opening lid

Self-returning lid

180° opening and self-returning lid

IP66/IP67 (socket & inlet)

Socket no. + 10

Socket no. + R

Socket no. + 18

Part no. + 600

TYPICAL CONFIGURATION

WALL MOUNTING SOCKET DN3



PLUG DN3



	+	
Wall box metal 20° 193A053		Socket-outlet 1934017
+		
	+	
Straight handle poly 193A013		Inlet 1938017


MAIN FEATURES

Rated current (with wiring according to standard)	50 A	Ambient temperature	-40 °C to +60 °C
Maximum voltage	500 V	Flexible wiring (min-max)	2,5 - 16 mm ²
IP protection lid closed	IP55	Stranded wiring (min-max)	2,5 - 25 mm ²
IP protection connected plug	IP54	Other wiring	on request
Shock resistance (metal casing)	IK09	Keying positions	16


LOAD-BREAK CAPABILITY OF THE DECONTACTOR™

Comply with IEC EN 60309-1 and IEC EN 60309-4 standards	50 A / 500 V
Load-break capability according to IEC EN 60947-3 / AC-22A	(50 A / 400 V) or (32 A / 500 V)

SOCKET-OUTLET female
DN3 (50 A)



INLET male
DN3 (50 A)



Voltage 50 Hz	Polarity	Part no.	Part no.
20 - 24 V	2P	193408A	193808A
190 - 230 V	3P+E	1934033	1938033
220 - 250 V	1P+N+E	1934015	1938015
380 - 440 V	3P+E	1934013	1938013
220 - 250 V 380 - 440 V	3P+N+E	1934017	1938017
480 - 500 V	3P+E	1934093	1938093
480 - 500 V	3P+N+E	1934097	1938097

► Other voltages, frequencies and contact configurations are available (see page 10).

DUAL VOLTAGE SOCKET-OUTLET
(SEE P.8)

BOXES

Cable gland not included



Wall box metal 20°

Wall box metal + Inclined metal 70°

Wall box metal + Inclined metal 30°

Wall box metal + straight metal sleeve

Entry				
M25	193A053	876A053	193A653	193A095
M32		876A053419	193A653419	193A095419
M40		876A053420	193A653420	193A095420
M50		876A053429	193A653429	193A095429

SLEEVES



Inclined metal 30°

Inclined metal 70°

Straight metal

193A027	876A087	193A127
---------	---------	---------

HANDLES



Straight poly

Straight poly with poly cable gland

Straight metal with metal cable gland

Straight poly without cable gland with metric threaded entry

13-35 mm	193A013	5-12 mm	193A25320P	7-13 mm	193A95320M	M20	193A253417
13-35 mm	193A473*	9-18 mm	193A753	8-16 mm	193A963	M25	193A253418
		14-25 mm	193A25332P	16-24 mm	193A95332M	M32	193A253419
		18-32 mm	193A25340P	22-32 mm	193A95340M	M40	193A253420

*With built-in finger draw plate (recommended for inline connections)

ACCESSORIES & OPTIONS	
<p>Locking with shaft for 3 padlocks ø 8 mm (padlocks not supplied) Socket no. + 844</p> <p>Lockable plug: contact us</p> <p>Padlocking device 1 to 6 padlocks 873A541</p>	
<p>E-Stop button Socket no. + 453</p>	
<p>Inlet cap 193A126</p>	
<p>180° opening lid Socket no. + 10</p> <p>Self-returning lid Socket no. + R</p> <p>180° opening and self-returning lid Socket no. + 18</p> <p>IP66/IP67 (socket & inlet) Part no. + 600</p>	

TYPICAL CONFIGURATION

WALL MOUNTING SOCKET DN6

Wall box metal 30°
196A653

Socket-outlet
1964017

PLUG DN6

Straight elastomer
659A013D25

Inlet
1968017

MAIN FEATURES

Rated current (with wiring according to standard)	90 A	Ambient temperature	-40 °C to +60 °C
Maximum voltage	500 V	Flexible wiring (min-max)	10 - 25 mm ²
IP protection lid closed	IP55	Stranded wiring (min-max)	10 - 35 mm ²
IP protection connected plug	IP54	Other wiring	on request
Shock resistance (metal casing)	IK09	Keying positions	16

LOAD-BREAK CAPABILITY OF THE DECONTACTOR™

Comply with IEC EN 60309-1 and IEC EN 60309-4 standards	90 A / 500 V
Load-break capability according to IEC EN 60947-3 / AC-22A	(90 A / 400 V) or (63 A / 500 V)

DUAL VOLTAGE SOCKET-OUTLET
(SEE P.8)

Voltage 50 Hz	Polarity	Part no.	Part no.
20 - 24 V	2P	196408A	196808A
190 - 230 V	3P+E	1964033	1968033
220 - 250 V	1P+N+E	1964015	1968015
380 - 440 V	3P+E	1964013	1968013
220 - 250 V 380 - 440 V	3P+N+E	1964017	1968017
480 - 500 V	3P+E	1964093	1968093
480 - 500 V	3P+N+E	1964097	1968097

► Other voltages, frequencies and contact configurations are available (see page 10).

AUXILIARY CONTACTS

Socket-outlet with 4 auxiliary contacts (5 A / 400 V)	Socket no. + 264
Inlet with 4 auxiliary contacts (5 A / 400 V)	Inlet no. + 264

BOXES

Cable gland not included



Wall box metal + Inclined metal 70°

Wall box metal + Inclined metal 30°

Wall box metal + straight metal sleeve

Entry			
M32	879A823419	196A653419	196A095419
M40	879A823420	196A653420	196A095420
M50	879A823	196A653	196A095
M63	879A823463	196A653463	196A095463

SLEEVES



Inclined metal 30°

Inclined metal 70°

Straight metal

196A027	879A087	196A127
---------	---------	---------

HANDLES



Straight elastomer

Straight poly with metal cable gland

Straight metal with metal cable gland

Straight poly without cable gland with metric threaded entry

18-25 mm	659A013D25	35-48 mm	619A25363M	16-24 mm	196A95332M	M63	619A253463
25-35 mm	659A013D35			22-32 mm	196A963		
35-45 mm	659A013D45			34-44 mm	196A95350M		

INFO +

Durability in harsh environments

The DN deconnector is designed and built to resist in harsh environments. Its metal body resists mechanical abuse and corrosion; its components are dimensioned to be durable in heavy industry and mines. The interior mouldings in both outlet and inlet provide effective protection against dust.

ACCESSORIES & OPTIONS

Locking with shaft for 3 padlocks
 ø 8 mm (padlocks not supplied)

Socket no. + 844

Lockable plug: contact us

Padlocking device 1 to 6 padlocks
 873A541



E-Stop button

Socket no. + 453



Inlet cap

196A126



Closing mechanism

Draw lever only: 196A376

Draw plate only: 196A396



180° opening lid

Socket no. + 10

Self-returning lid

Socket no. + R

180° opening and self-returning lid

Socket no. + 18

IP66/IP67 (socket & inlet)

Part no. + 600

TYPICAL CONFIGURATION

WALL MOUNTING SOCKET DN9

PLUG DN9



	+	
Wall box metal 30° 199A053		Socket-outlet 1994013
	+	
Straight elastomer 659A013D35		Inlet 1998013

MAIN FEATURES

Rated current (with wiring according to standard)	150 A	Ambient temperature	-40 °C to +60 °C
Maximum voltage	440 V	Flexible wiring (min-max)	16 - 50 mm ²
IP protection lid closed	IP55	Stranded wiring (min-max)	25 - 70 mm ²
IP protection connected plug	IP54	Other wiring	on request
Shock resistance (metal casing)	IK09	Keying positions	4

LOAD-BREAK CAPABILITY OF THE DECONTACTOR™

Comply with IEC EN 60309-1 and IEC EN 60309-4 standards	150 A / 440 V
Load-break capability according to IEC EN 60947-3 / AC-22A	150 A / 400 V

		SOCKET-OUTLET female DN9 (150 A)		INLET male DN9 (150 A)	
Voltage 50 Hz	Polarity	Part no.		Part no.	
190 - 230 V	3P+E	1994033		1998033	
380 - 440 V	3P+E	1994013		1998013	

► Other voltages, frequencies and contact configurations are available (see page 10).

BOXES

Cable gland not included



Wall box metal + Inclined metal 70°



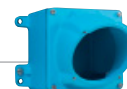
Wall box metal + Inclined metal 30°



Wall box metal + straight metal sleeve



Wall box metal + Inclined metal 70°



Wall box metal + Inclined metal 30°



Wall box metal + straight metal sleeve

Entry						
M32				879A823419	199A653419	199A095419
M40				879A823420	199A653420	199A095420
M50	879A853	399A053	399A895	879A823	199A653	199A095
M63	879A853463	399A053463	399A895463	879A823463	199A653463	199A095463
M75	879A853475	399A053475	399A895475			

SLEEVES



Inclined metal 30°

199A027



Inclined metal 70°

879A087



Straight metal

199A127

HANDLES



Straight elastomer



Straight poly with metal cable gland



Straight metal with metal cable gland



Straight poly without cable gland with metric threaded entry

25-35 mm	659A013D35	35-48 mm	619A25363M	22-32 mm	199A95340M	M63	619A253463
35-45 mm	659A013D45			34-44 mm	199A963		
45-49 mm	659A013D49			35-48 mm	199A95363M		

ACCESSORIES & OPTIONS

Locking with shaft for 3 padlocks
ø 8 mm (padlocks not supplied)

Socket no. + 844

Lockable plug; contact us

Padlocking device 1 to 6 padlocks
873A541



E-Stop button

Socket no. + 453



Inlet cap

199A126



Closing mechanism

Draw lever only: 199A376

Draw plate only: 199A396



180° opening lid

Self-returning lid

180° opening and self-returning lid
IP66/IP67 (socket & inlet)

Socket no. + 10

Socket no. + R

Socket no. + 18

Part no. + 600