

# DS7c



# DS7c Multipin – 30A Plugs & Receptacles

### Ratings

- **Voltage**  
50 VAC or 600 VAC Max/130 VDC+  
+ For DC order 600V model
- **Amperage Rating**  
30A Current Interrupting
- **Temperature Range**  
Min -40°F/Max 140°F  
See pg 234 for temps below -15°F.
- **Environmental Ratings**  
IP54/IP55
- **Wiring Capacity**  
Min 14 AWG Max 8 AWG
- **Applicable Standards**  
Contact Customer Service

For DS7c dimensions, see pgs 53-54

## Receptacle (female)



Don't forget to add installation accessories to your order

## Inlet (male)



### North American Configurations

Voltage	Polarity	Part #	
		Poly	Metal
50V	4P	33-34540	37-34540
50V	5P	33-34550	37-34550
50V	6P	33-34560	37-34560
50V	7P	33-34570	37-34570
600V	3P+G	33-34531	37-34531
600V	4P+G	33-34541	37-34541
600V	5P+G	33-34551	37-34551
600V	6P+G	33-34561	37-34561

Voltage	Polarity	Part #	
		Poly	Metal
50V	4P	33-38540	37-38540
50V	5P	33-38550	37-38550
50V	6P	33-38560	37-38560
50V	7P	33-38570	37-38570
600V	3P+G	33-38531	37-38531
600V	4P+G	33-38541	37-38541
600V	5P+G	33-38551	37-38551
600V	6P+G	33-38561	37-38561

For international configurations and ratings (IEC,CE) visit [meltric.com/international-catalog](http://meltric.com/international-catalog) or contact customer service at 800.433.7642.

### Main Options



5/16" hole  
**Padlock Pawl**



**Mushroom Pawl**



**Self-Ejecting Devices**

\* Requires straight insertion receptacle or inlet and self-ejecting plug or connector

### Receptacle Options

### Part #

With 2 Auxiliary/Pilot contacts	Recept # - 172
With 3 Auxiliary/Pilot contacts	Recept # - 173
Type 4X & closed lid configuration	Recept # - 4X
Straight Insertion	Recept # - 352
Self-Ejecting Connector Release	Recept # - 354
Mushroom Pawl	Recept # - 375
Locking Mushroom Pawl	Recept # - 845
Padlock Pawl	Recept # - 843
Padlockable Mushroom Pawl	Recept # - 375- 843
Metal Pawl (on poly receptacle)	Recept # - 824
Closed Lid Configuration	Recept # - NC

### Inlet Options

### Part #

With 2 Auxiliary/Pilot Contacts	Inlet # - 172
With 3 Auxiliary/Pilot Contacts	Inlet # - 173
Type 4X Watertightness	Inlet # - 4X
Self-Ejecting Plug Release	Inlet # - 338
With No Lockout Hole	Inlet # - A155

### DS7c Order Example:

To order a device with a Mushroom Pawl, add **-375** to the receptacle part number.  
DS7c 4P = 33-34540-375



See pgs 211-220 for detailed information on these options

# Installation Accessories

Unless indicated otherwise, accessories can be used with either poly or metal plugs and receptacles.

## Handles



Not Type 3R



Makes connector closures easier

NPT	Poly Handle	Metal* Handle	Cable Range	Nylon Handle	Neoprene Handle	Poly Handle w/Clamp & Bushing	Poly Handle w/built in Draw Grips
1/2"	6PH12	6H12	.50 - 1.25	-	31-611	-	-
3/4"	6PH34	6H34	.51 - 1.38	FH611	-	-	FH611-473
1"	6PH1	6H1	1.250 - 1.375	-	-	6PM622	-
1 1/4"	6PH114	6H114	1.438 - 1.562	-	-	6PM625	-
1 1/2"	6PH112	6H112	1.562 - 1.688	-	-	6PM627	-
			1.688 - 1.812	-	-	6PM629	-

- Notes:**
- Finger draw plates are recommended for easier connector closure on cord to cord assemblies.
  - For available cord grips, see pgs 169-170.
  - \* For metal devices only.

## Angles



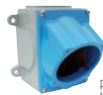
Nylon 30° Angle	Metal 30° Angle	Metal 70° Angle	Metal Angle+ Oversized 30°	Metal Straight Adapter	Metal Lateral Angle 30°
MP6	MA6	89-6A027	MA660	MS6	MAB6

+ Mounts on oversize box only. Order with MB10xxx box. See page 48.

## Junction Boxes



61.4 in<sup>3+</sup>



59.9 in<sup>3+</sup>



28.1 in<sup>3+</sup>



184.0 in<sup>3+</sup>

NPT	Metal Box	Metal Box with Nylon Angle	Metal Box with Metal Angle	Poly* Conduit Entry	Poly 70°** Wall Box
1/2"	-	-	-	MC612	51-DA058
3/4"	-	-	-	MC634	51-DA058
1"	MB61	31-6A053-080-1	39-6A053-080-1	MC61	51-DA058
1 1/4"	MB6114	31-6A053-080-114	39-6A053-080-114	MC6114	51-DA058
1 1/2"	MB6112	31-6A053-080-112	39-6A053-080-112	-	51-DA058
2"	MB62	31-6A053-080-2	39-6A053-080-2	-	51-DA058

\* For poly devices only      \*\* 70° boxes are not drilled. Contact customer service if factory drilling is required.  
 + Interior volume with receptacle installed.

## Miscellaneous Accessories



\* Set of Two (2)



For Male Devices Only



For Male Devices Only



Finger Drawplates	Protective Cap	Padlockable Cap Aluminum	Inlet Spring-Loaded cap	Receptacle+ Lockout Pin
FDP6	31-6A426	DS6MC	31-6A226	LP-843

\* Recommended for cord to cord assembly applications, for easier connector closure.  
 + Requires Padlockable Pawl option (-843) on receptacle.

## NPT Guidelines

Cable Range	NPT
.312 - .625	1/2"
.438 - .812	3/4"
.660 - 1.000	1"
.875 - 1.375	1 1/4"
.890 - 1.812	1 1/2"

NPT sizes are determined by the cable diameter and third party cord grip.

## Order Example

A typical order should include an inlet part number, a receptacle part number **AND** the matching handles, angles or other required accessories.



Male Inlet with Handle (Plug)  
33-38540 + FH611



Female Receptacle with Angle Adapter  
33-34540 + MP6

# DR7c



# DR7c Multipin – 50A Plugs & Receptacles

### Ratings

- **Voltage**  
50 VAC or 600 VAC Max/130 VDC+  
+ For DC order 600V model
- **Amperage Rating**  
50A Non-Current Interrupting
- **Temperature Range**  
Min -40°F/Max 140°F  
See pg 234 for temps below -15°F.
- **Environmental Ratings**  
IP54/IP55
- **Wiring Capacity**  
Min 14 AWG Max 8 AWG
- **Applicable Standards**  
Contact Customer Service

For DR7c dimensions, see pgs 53-54

## Receptacle (female)



Don't forget to add installation accessories to your order

## Inlet (male)



### North American Configurations

Voltage	Polarity	Part #	
		Poly	Metal
50V	4P	31-34940	39-34940
50V	5P	31-34950	39-34950
50V	6P	31-34960	39-34960
50V	7P	31-34970	39-34970
600V	3P+G	31-34931	39-34931
600V	4P+G	31-34941	39-34941
600V	5P+G	31-34951	39-34951
600V	6P+G	31-34961	39-34961

Voltage	Polarity	Part #	
		Poly	Metal
50V	4P	31-38940	39-38940
50V	5P	31-38950	39-38950
50V	6P	31-38960	39-38960
50V	7P	31-38970	39-38970
600V	3P+G	31-38931	39-38931
600V	4P+G	31-38941	39-38941
600V	5P+G	31-38951	39-38951
600V	6P+G	31-38961	39-38961

For international configurations and ratings (IEC,CE) visit [meltric.com/international-catalog](http://meltric.com/international-catalog) or contact customer service at 800.433.7642.

### Main Options



**Padlock Pawl**



**Mushroom Pawl**



**Self-Ejecting Devices**

\* Requires straight insertion receptacle or inlet and self-ejecting plug or connector

### Receptacle Options

### Part #

With 2 Auxiliary/Pilot contacts	Recept # - 172
With 3 Auxiliary/Pilot contacts	Recept # - 173
Type 4X & closed lid configuration	Recept # - 4X
Straight Insertion	Recept # - 352
Self-Ejecting Connector Release	Recept # - 354
Mushroom Pawl	Recept # - 375
Locking Mushroom Pawl	Recept # - 845
Padlock Pawl	Recept # - 843
Padlockable Mushroom Pawl	Recept # - 375- 843
Metal Pawl (on poly receptacle)	Recept # - 824
Closed Lid Configuration	Recept # - NC

### Inlet Options

### Part #

With 2 Auxiliary/Pilot contacts	Inlet # - 172
With 3 Auxiliary/Pilot contacts	Inlet # - 173
Type 4X Watertightness	Inlet # - 4X
Self-Ejecting Plug Release	Inlet # - 338
With No Lockout Hole	Inlet # - A155

### DR7c Order Example:

To order a device with a Mushroom Pawl add **-375** to the receptacle part number.  
DR7c 4P = 31-34940-375

See pgs 211-220 for detailed information on these options

# Installation Accessories

Unless indicated otherwise, accessories can be used with either poly or metal plugs and receptacles

## Handles



Not Type 3R

Makes connector closures easier

NPT	Poly Handle	Metal* Handle	Cable Range	Nylon Handle	Neoprene Handle	Poly Handle w/Clamp & Bushing	Poly Handle w/built in Draw Grips
1/2"	6PH12	6H12	.50 - 1.25	-	31-611	-	-
3/4"	6PH34	6H34	.51 - 1.38	FH611	-	-	FH611-473
1"	6PH1	6H1	1.250 - 1.375	-	-	6PM622	-
1 1/4"	6PH114	6H114	1.438 - 1.562	-	-	6PM625	-
1 1/2"	6PH112	6H112	1.562 - 1.688	-	-	6PM627	-
			1.688 - 1.812	-	-	6PM629	-

- Notes:**
- Finger draw plates are recommended for easier connector closure on cord to cord assemblies.
  - For available cord grips, see pgs 169-170.
  - \* For metal devices only.

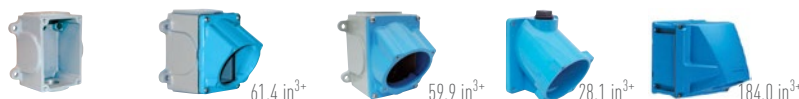
## Angles



Nylon 30° Angle	Metal 30° Angle	Metal 70° Angle	Metal Angle+ Oversized 30°	Metal Straight Adapter	Metal Lateral Angle 30°
MP6	MA6	89-6A027	MA660	MS6	MAB6

+ Mounts on oversize box only. Order with MB10xxx box. See page 48.

## Junction Boxes



NPT	Metal Box	Metal Box with Nylon Angle	Metal Box with Metal Angle	Poly* Conduit Entry	Poly 70°** Wall Box
1/2"	-	-	-	MC612	51-DA058
3/4"	-	-	-	MC634	51-DA058
1"	MB61	31-6A053-080-1	39-6A053-080-1	MC61	51-DA058
1 1/4"	MB6114	31-6A053-080-114	39-6A053-080-114	MC6114	51-DA058
1 1/2"	MB6112	31-6A053-080-112	39-6A053-080-112	-	51-DA058
2"	MB62	31-6A053-080-2	39-6A053-080-2	-	51-DA058

- \* For poly devices only  
 \*\* 70° boxes are not drilled. Contact customer service if factory drilling is required.  
 + Interior volume with receptacle installed.

## Miscellaneous Accessories



\* Set of Two (2) For Male Devices Only For Male Devices Only

Finger Drawplates	Protective Cap	Padlockable Cap Aluminum	Inlet Spring-Loaded cap	Receptacle + Lockout Pin
FDP6	31-6A426	DS6MC	31-6A226	LP-843

- \* Recommended for cord to cord assembly applications, for easier connector closure.  
 + Requires Padlockable Pawl option (-843) on receptacle.

## NPT Guidelines

Cable Range	NPT
.312 - .625	1/2"
.438 - .812	3/4"
.660 - 1.000	1"
.875 - 1.375	1 1/4"
.890 - 1.812	1 1/2"

NPT sizes are determined by the cable diameter and third party cord grip.

## Order Example

A typical order should include an inlet part number, a receptacle part number **AND** the matching handles, angles or other required accessories.



Male Inlet with Handle (Plug)  
31-38940 + FH611



Female Receptacle with Angle Adapter  
31-34940 + MP6