

# EWZ SERIES

## SunSet 1 OR 2 CHANNEL 7 DAY TIME SWITCH



CALIFORNIA Title 24

ASHRAE 90.1

**PREFERRED  
FOR  
OUTDOOR  
LIGHTING!**

### APPLICATIONS



- Outdoor signs
- Lighting security
- Heating and air conditioning

### FEATURES

**SCHEDULING:** 20 ON & OFF set points for individual programs for each day of the week. Minimum setting is 1 minute.

**SunSet ASTRONOMIC:** Adjusts daily to changes in sunset times. Adjustable 10° - 60° Northern or Southern latitudes. Can be individually offset +/- 1-240 minutes from both sunset and sunrise times.

**DAYLIGHT SAVING:** Automatic (can be omitted).

**LEAP YEAR:** Automatic Compensation.

**MANUAL OVERRIDE:** Until the next regularly scheduled ON or OFF, automatic operation then resumes.

**CLOCK FORMAT:** AM/PM.

**POWER OUTAGE BACKUP:** Permanent schedule retention. Supercapacitor provides 4 days of real time backup.

**MOMENTARY OPTION:** For mechanically held contactors: Model EWZ201 only. Configure with simple jumper change for single-channel momentary operation.

**STANDARDS:** Listed UL917.

| CAT. NO.  | UPC CODE | INPUT SUPPLY (VAC) 50/60Hz | NO. OF CHANNELS | OUTPUT DRY CONTACTS |
|-----------|----------|----------------------------|-----------------|---------------------|
| EWZ101    | 82470    | 120-277                    | 1               | SPST                |
| EWZ103    | 82473    | 120-277                    | 1               | DPST                |
| EWZ120    | 82471    | 120-277                    | 1               | SPDT                |
| EWZ201    | 82472    | 120-277                    | 2               | SPST                |
| EWZ101-MB | 82263    | 120-277                    | 1               | SPST                |
| EWZ103-MB | 82269    | 120-277                    | 1               | DPST                |
| EWZ120-MB | 82275    | 120-277                    | 1               | SPDT                |
| EWZ201-MB | 82281    | 120-277                    | 2               | SPST                |

| TYPE            | EWZ101,EWZ103, EWZ201 |           | EWZ120        |           |           |
|-----------------|-----------------------|-----------|---------------|-----------|-----------|
|                 | VOLTAGE (VAC)         | RATING NO | VOLTAGE (VAC) | RATING NO | RATING NC |
| General Purpose | 120-277               | 40A       | 120-277       | 30A       | 30A       |
| Inductive       | 120                   | 30A       | 120           | 30A       | 10A       |
|                 | 208-277               | 20A       | 208-277       | 20A       | 10A       |
| Tungsten        | 120                   | 15A       | 120           | 15A       | 2A        |
| Pilot Duty      | 120-277               | 720VA     | 120-277       | 720VA     | 720VA     |
|                 | 120                   | 1HP       | 120           | 1HP       | 1HP       |
|                 | 208-277               | 1 1/2HP   | 208-277       | 1 1/2HP   | 1 1/2HP   |
| Motor           | 240-277               | 2HP       | 240-277       | 2HP       | 2HP       |
|                 | 28VDC                 | 30A       | 28VDC         | 30A       | 30A       |

# SPECIFICATIONS

**TIMING ACCURACY:** Line Frequency.

**INPUT VOLTAGE:**

120 - 277VAC, 50/60Hz (automatic detection).

**TERMINAL RANGE:** #8 - #16AWG.

**OPERATING TEMPERATURE:**

-40 °F to +149 °F (-40 °C to +65 °C).

**POWER CONSUMPTION:** 6VA Max.

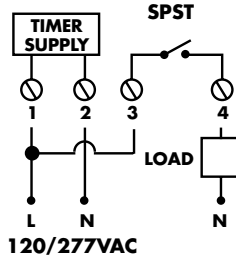
**ENCLOSURE:** Polycarbonate Indoor/Outdoor  
NEMA 3R is standard with lockable hasp (see pages 589-593 for enclosure dimensions).

Suffix -MB without enclosure and includes mounting bracket.

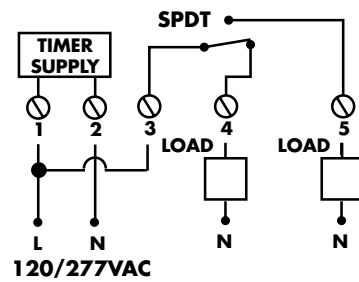
**OPTIONS:** Suffix -Q Quartz crystal timing.

Maintains accurate timing where 50 or 60 Hz is not consistent such as on-site generator produced power.  
Consult factory for minimum order size.

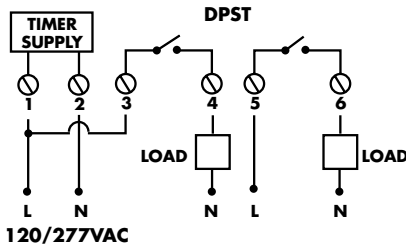
**EWZ101**



**EWZ120**



**EWZ103**



**EWZ201**

