

Pipe Straps

For Rigid Conduit & IMC

Type 14-S

Use: To support Rigid Conduit and IMC.

Features: Snap type - double ribbed

Material/Finish: Steel/Zinc Plated

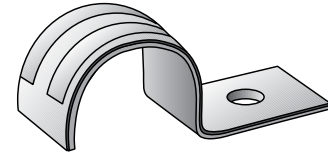
Applicable Third Party Standards:

Fed. Spec: FF-S-760

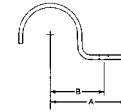
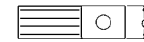
Note:

2½" through 4" sizes also suitable for EMT.

Trade Size (inches)	Steel Straps Catalog Number	Dimensions in Inches			Minimum Recommended Bolt Dia.
		A	B	C	
½	14-50S	2½	1¼	¾	¼
¾	14-75S	2¾	1½	¾	¼
1	14-100S	2¾	1½	¾	¼
1¼	14-125S	3½	1½	1	⅝
1½	14-150S	3¾	1¾	1½	⅝
2	14-200S	4¾	2½	1¼	⅝
2½	14-250S	6¾	2½	1¼	½
3	14-300S	6¾	3	1¼	½
3½	14-350S	7¾	3¼	1½	⅝
4	14-400S	8¾	3¼	1½	⅝



Type 14-S



Type THR

Use: To support Rigid Conduit and IMC.

Features: Snap type - double ribbed

Material/Finish: Steel/Zinc Plated

Third Party Certification:



CSA Certified: 104691

½" through 2" sizes only

Applicable Third Party Standards:

CSA C22.2 No.18

Fed. Spec: FF-S-760

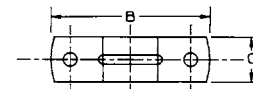
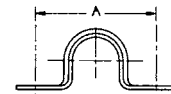
Note:

2½" through 4" sizes also suitable for EMT.

Trade Size (inches)	Steel Straps Catalog Number	Dimensions in Inches			Minimum Recommended Bolt Dia.
		A	B	C	
½	THR-50S	1¾	2¼	⅝	⅜
¾	THR-75S	1 ²⁷ / ₃₂	2 ⁵ / ₁₆	¾	⅜
1	THR-100S	2 ⁵ / ₁₆	2 ¹⁵ / ₁₆	2 ³ / ₃₂	¼
1¼	THR-125S	2 ¹⁵ / ₁₆	3 ³ / ₈	2 ³ / ₃₂	¼
1½	THR-150S	3 ⁵ / ₃₂	3 ¹⁵ / ₁₆	2 ³ / ₃₂	¼
2	THR-200S	4¼	5	2 ³ / ₃₂	¼
2½	THR-250S	4 ¹¹ / ₁₆	5 ²³ / ₃₂	1	⅝
3	THR-300S	5 ¹¹ / ₁₆	6¾	1	⅝
3½	THR-350S	6 ⁵ / ₁₆	7 ⁵ / ₁₆	1	⅝
4	THR-400S	6 ²⁷ / ₃₂	7 ¹³ / ₁₆	1	⅝



Type THR



Type 14-G

Use:

To support Rigid Conduit and IMC.

Material/Finish:

Malleable Iron/Hot Dipped Galvanized

Third Party Certification:



CSA Certified: 009795.

Applicable Third Party Standards:

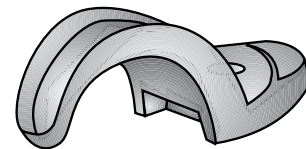
CSA: C22.2 No.18

Fed. Spec: FF-S-760

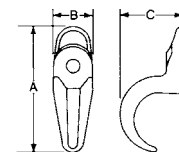
Note:

2½" through 4" sizes also suitable for EMT.

Malleable Straps Catalog Number	Conduit Size Inches	Dimensions in Inches			Minimum Recommended Bolt Dia.
		A	B	C	
14-18G	⅛	1 ¹⁵ / ₁₆	½	½	#10
14-25G	¼	1 ¹⁹ / ₃₂	1 ⁹ / ₃₂	⅝	¼
14-38G	⅜	1¾	⅝	¾	¼
14-50G	½	2¼	2 ¹ / ₃₂	1 ¹⁵ / ₁₆	¼
14-75G	¾	2 ⁹ / ₁₆	¾	1 ⁷ / ₃₂	¼
14-100G	1	3 ¹ / ₁₆	1 ⁹ / ₁₆	1½	¼
14-125G	1¼	3 ¹ / ₁₆	7 ⁷ / ₈	1 ⁷ / ₈	⅝
14-150G	1½	6¾	1	2½	⅝
14-200G	2	5 ¹ / ₁₆	1 ⁷ / ₈	2 ⁷ / ₁₆	½
14-250G	2½	5 ¹⁵ / ₁₆	1 ³ / ₈	3 ¹ / ₁₆	½
14-300G	3	7 ¹ / ₁₆	1 ⁷ / ₈	3 ¹ / ₁₆	½
14-350G	3½	8 ³ / ₁₆	1 ¹³ / ₁₆	4 ³ / ₈	⅝
14-400G	4	8 ¹¹ / ₁₆	2	5	⅝
14-500G	5	10 ¹⁹ / ₁₆	2¾	6½	⅝
14-600G	6	12½	3 ³ / ₈	7½	1



Type 14-G



Clamp Backs & Conduit Spacers

For Rigid Conduit, IMC & EMT

Clamp Backs

Use:

Provides spacing from mounting surface when used with malleable iron pipe straps.

Material:

Malleable Iron

Finish:

Hot Dip Galvanized

Third Party Certification:

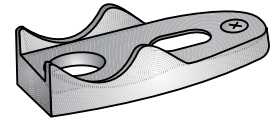


CSA Certified: 009795

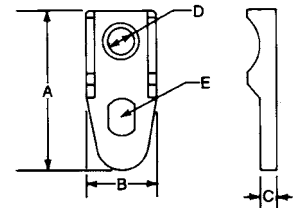
Applicable Third Party Standards:

CSA Standard: C22.2 No. 18

Trade Size (inches)	Catalog Number	Dimensions in Inches				
		A	B	C	D	E
1/2	141G	1 1/16	1 1/16	1/4	3/8	3/8 x 1/2
3/4	142G	2 1/2	1 1/8	1/4	3/8	9/16 x 7/16
1	143G	3 3/16	1 5/16	5/16	3/8	9/16 x 7/16
1 1/4	144G	3 11/16	1 7/16	9/16	1/2	9/16 x 17/32
1 1/2	145G	3 5/16	1 1/2	5/16	9/16	19/32 x 23/32
2	146G	5 1/8	2	3/8	9/16	5/8 x 13/16
2 1/2	147G	5 3/4	2 1/2	3/8	1/32	5/8 x 1 1/8
3	148G	7 1/8	2 13/16	3/8	15/32	5/8 x 1 1/8
3 1/2	149G	8	3 3/32	7/16	15/32	1 1/16 x 1 11/32
4	150G	8 3/4	3 7/16	3/8	15/32	23/32 x 1 19/32
5	151G	10 1/16	3 11/16	1/2	17/32	27/32 x 1 5/16
6	152G	6	12	3 5/16	9/16	1 1/4 x 2



Clamp Back



Beam Clamps

Type IS

Use:

Provides support for conduit hanging systems.

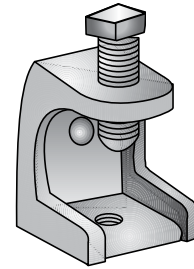
Material:

Malleable Iron clamp
Steel Screw, case hardened

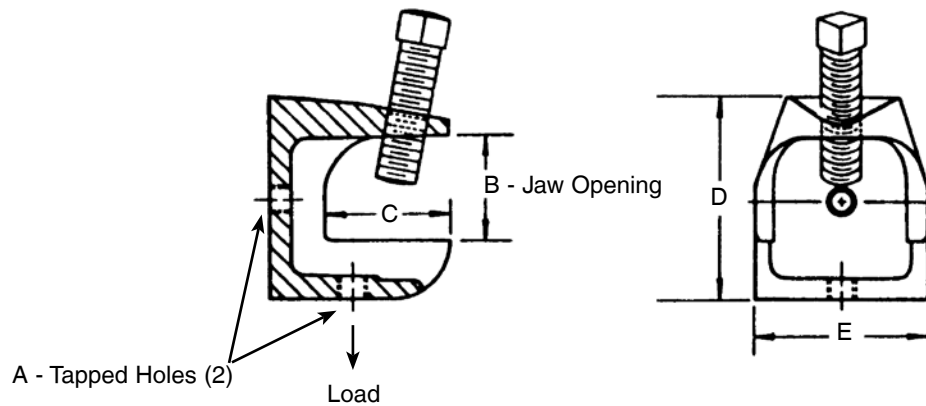
Finish:

Clamp - Hot Dip Galvanized
Screw - Zinc Electroplated

Catalog Number	A Tapped Holes	B Jaw Opening	Dimensions in Inches			Max. Load (lbs.)
			C	D	E	
IS-500	¼ - 20	1 ⁹ / ₁₆	7 ⁷ / ₈	1 ⁵ / ₈	1	335
IS-509	10 - 24	1 ⁵ / ₁₆	7 ⁷ / ₈	1 ⁵ / ₈	1	335
IS-501	5 ⁵ / ₁₆ - 18	1 ⁹ / ₁₆	1 ¹ / ₈	1 ¹³ / ₁₆	1 ¹ / ₂	525
IS-502	3 ⁸ / ₁₆ - 16	1	1 ³ / ₈	2 ¹ / ₁₆	2	750
IS-503	½ - 13	1 ¹ / ₈	1 ¹¹ / ₁₆	2 ¹ / ₄	2 ⁵ / ₈	900



Type IS



Conduit Clamps

Type UBC

Right Angle

Type UPC

Parallel

Type UEC

Edge type

Use:

Designed to secure Rigid Conduit, IMC or EMT across, parallel or perpendicular to beam, channel and angle supports.

Features:

- Easily installed
- Capable of withstanding heavy loads

Material:

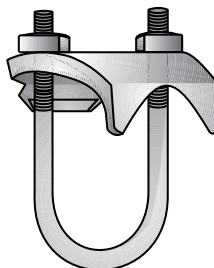
All components are Malleable Iron except nuts and bolts which are steel.

Finish:

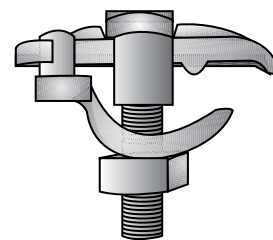
Clamp - Hot Dipped Galvanized
Hardware - Mechanically Galvanized

Note:

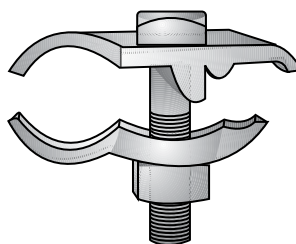
Edge type UEC used for rigid conduit only.



Type UBC-G
Right Angle Type



Type UEC - G
Edge Type



Type UPC-G
Parallel Type

Trade Size (inches)	Right Angle Type Catalog Number	Parallel Type Catalog Number	Edge Type Catalog Number
1/2	UBC-50G	UPC-50G	UEC-50G
3/4	UBC-75G	UPC-75G	UEC-75G
1	UBC-100G	UPC-100G	UEC-100G
1 1/4	UBC-125G	UPC-125G	UEC-125G
1 1/2	UBC-150G	UPC-150G	UEC-150G
2	UBC-200G	UPC-200G	UEC-200G
2 1/2	UBC-250G	UPC-250G	UEC-250G
3	UBC-300G	UPC-300G	UEC-300G
3 1/2	UBC-350G	UPC-350G	
4	UBC-400G	UPC-400G	
5	UBC-500G		
6	UBC-600G		

Conduit U-Bolts & Hangers

For Rigid Conduit, IMC & EMT

Type U

Conduit U-Bolts

Features:

- 2 hex nuts

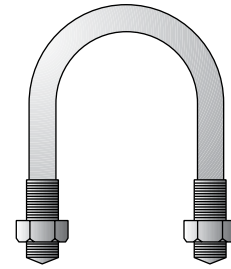
Material:

Steel

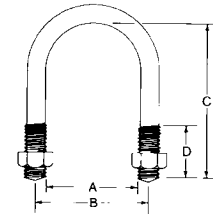
Finish:

Mechanically Galvanized

Trade Size (inches)	Catalog Number	Dimensions in Inches				Thread Size
		A	B	C	D	
1/2	U-50SG	1 ⁵ / ₁₆	1 ³ / ₁₆	2 ¹ / ₂	1 ¹ / ₂	1/4 - 20
3/4	U-75SG	1 ¹ / ₈	1 ¹ / ₁₆	2 ¹ / ₂	1 ¹ / ₂	1/4 - 20
1	U-100SG	1 ¹ / ₈	1 ³ / ₄	2 ¹³ / ₁₆	1 ¹ / ₂	5/16 - 18
1 ¹ / ₄	U-125SG	1 ³ / ₄	2 ¹ / ₁₆	3 ³ / ₄	1 ¹ / ₂	5/16 - 18
1 ¹ / ₂	U-150SG	2	2 ⁵ / ₁₆	3 ¹ / ₂	1 ¹ / ₂	5/16 - 18
2	U-200SG	2 ¹ / ₂	2 ⁷ / ₈	4	1 ³ / ₄	3/8 - 16
2 ¹ / ₂	U-250SG	3	3 ³ / ₈	4 ¹ / ₂	1 ³ / ₄	3/8 - 16
3	U-300SG	3 ⁵ / ₈	4	5 ¹ / ₄	1 ³ / ₄	3/8 - 16
3 ¹ / ₂	U-350SG	4 ¹ / ₈	4 ¹ / ₂	5 ¹ / ₁₆	1 ³ / ₄	3/8 - 16
4	U-400SG	4 ⁵ / ₈	5	6 ¹ / ₄	1 ³ / ₄	3/8 - 16
5	U-500SG	5 ⁵ / ₈	6	7 ³ / ₈	1 ³ / ₄	3/8 - 16
6	U-600SG	6 ¹ / ₁₆	7 ¹ / ₁₆	8 ³ / ₈	1 ³ / ₄	3/8 - 16



Type U

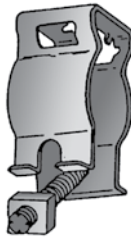


Type H-SBS

Conduit Hangers with Swing Bolt and Nut

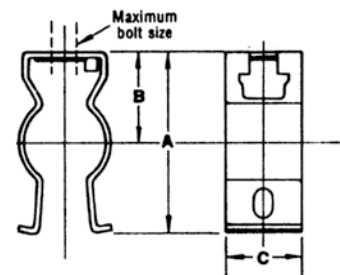
Material/Finish:

Steel/Zinc Plated



Type H-SBS

Trade Size (inches)	With Bolt/Nut Catalog Number	Dimensions in Inches			Max. Bolt Size
		A	B	C	
1/2	H-0SBS	1 ²³ / ₃₂	7/8	3/4	1/4
3/4	H-1SBS	1 ²⁷ / ₃₂	2 ⁹ / ₃₂	7/8	1/4
1	H-2SBS	2 ¹¹ / ₃₂	1 ⁵ / ₃₂	7/8	1/4
1 ¹ / ₄	H-3SBS	2 ²¹ / ₃₂	1 ³ / ₈	7/8	1/4
1 ¹ / ₂	H-4SBS	3 ¹ / ₁₆	1 ⁵ / ₈	1	5/16
2	H-5SBS	3 ¹⁹ / ₃₂	1 ⁷ / ₈	1 ¹ / ₄	5/16



Type H-WBS

Conduit Hangers with Carriage Bolt and Nut

Material/Finish:

Steel/Zinc Plated



Type H-WBS

Trade Size (inches)	With Bolt/Nut Catalog Number	Dimensions in Inches			Max. Bolt Size
		A	B	C	
1/2	H-0WBS	1 ¹ / ₈	7/8	3/4	1/4
3/4	H-1WBS	2	2 ⁹ / ₃₂	7/8	1/4
1	H-2WBS	2 ¹³ / ₃₂	1 ⁵ / ₃₂	7/8	1/4
1 ¹ / ₄	H-3WBS	2 ¹³ / ₁₆	1 ³ / ₈	7/8	1/4
1 ¹ / ₂	H-4WBS	3 ⁷ / ₃₂	1 ⁵ / ₈	1	5/16
2	H-5WBS	3 ³ / ₄	1 ⁷ / ₈	1 ¹ / ₄	5/16
2 ¹ / ₂	H-6WBS	4 ⁷ / ₃₂	2 ¹ / ₈	1 ¹ / ₄	5/16
3	H-7WBS	4 ⁷ / ₈	2 ³ / ₈	1 ¹ / ₄	5/16
3 ¹ / ₂	H-8WBS	5 ³ / ₈	2 ¹ / ₁₆	1 ¹ / ₄	5/16
4	H-9WBS	6 ¹ / ₁₆	3	1 ³ / ₄	1/2

Conduit Clamps

For Rigid Conduit, IMC & EMT

Type J

Use:

For securing Rigid Conduit, IMC, EMT and Flexible Metal Conduit.

Material:

Malleable Iron
Steel Bolt

Finish:

Mechanically Galvanized

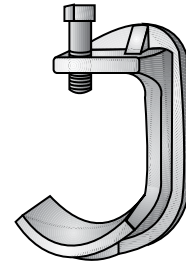
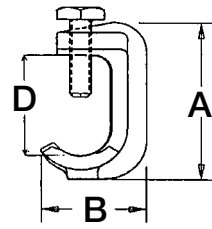
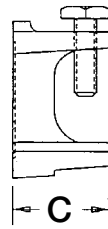
Third Party Certification:



CSA Certified: 009795

Applicable Third Party Standards:

CSA Standard: C22.2 No. 18



Type J

Trade Size (inches)	Catalog Number	Dimensions in Inches				Bolt Size
		A	B	C	D	
1/2	J-50G	2 ⁹ / ₁₆	1 ¹ / ₁₆	1 ³ / ₈	1 ⁵ / ₈	5/16-18 x 1 1/2
3/4	J-75G	2 ⁷ / ₈	1 ¹ / ₈	1 ¹³ / ₃₂	1 ¹⁵ / ₁₆	5/16-18 x 1 1/2
1	J-100G	3 ¹ / ₂	2 ⁹ / ₁₆	1 ³ / ₄	2 ¹ / ₄	5/16-18 x 1 1/2
1 1/4	J-125G	3 ³ / ₄	2 ¹ / ₂	1 ³ / ₄	2 ⁹ / ₁₆	3/8-16 x 1 1/2
1 1/2	J-150G	4 ¹ / ₁₆	2 ⁷ / ₈	2	2 ¹³ / ₁₆	3/8-16 x 1 1/2
2	J-200G	5	3 ⁵ / ₁₆	2 ¹ / ₁₆	3 ⁷ / ₁₆	1/2-13 x 1 1/4
2 1/2-3	J-2530G	6 ⁵ / ₁₆	4 ⁷ / ₁₆	2 ⁵ / ₈	4 ⁹ / ₁₆	5/8-11 x 2 1/2
3 1/2-4	J-3540G	7 ⁵ / ₈	5 ⁷ / ₁₆	3 ¹ / ₄	5 ³ / ₄	5/8-11 x 2 1/2

Type CBC

Conduit C Clamp

Use:

For securing Rigid Conduit, IMC and EMT.
Swivel grip rotates a full 360°.

Material/Finish:

Malleable Iron/Zinc Plated
Steel square head screw

Optional Finish:

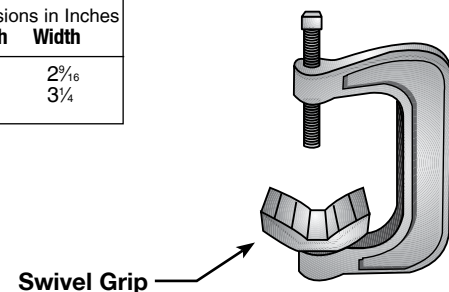
Mechanically Galvanized
Contact your local representative for pricing,
availability and minimum order quantities.

Note:

1 CBC-1— maximum beam thickness of 1/4" when
using 1 1/4" conduit.

2 CBC-2— maximum beam thickness of 1/8" when
using 2" conduit.

Trade Size (inches)	Catalog Number	Dimensions in Inches	
		Length	Width
1/2 - 3/4 - 1 - 1 1/4	CBC-1	3 ³ / ₈	2 ⁹ / ₁₆
1 1/4 - 1 1/2 - 2	CBC-2	4 ⁷ / ₈	3 ¹ / ₄



Type CBC

Tray-Bond™ Cable Tray Clamps

For Rigid Conduit, IMC & EMT

Type CTC

Use:

For connecting and grounding rigid conduit, IMC, or EMT to cable trays.

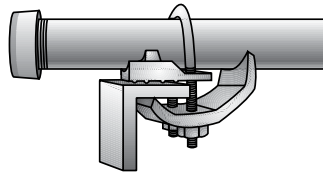
Secures and bonds metal conduit (rigid steel or aluminum, IMC and EMT) to the side rails of steel or aluminum cable trays without drilling or welding the tray. On the 1/2" through 4" sizes, conduits can attach to the tray from any angle up to 120°, allowing large power or control cables to be routed easily.

Features:

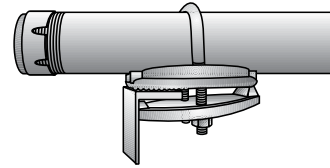
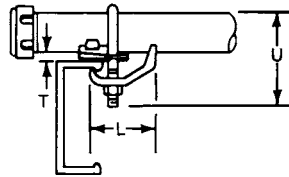
- Fast Installation
- Low Product Cost
- Excellent Grounding Continuity
- Variable Conduit Entry 1/2" - 4" sizes
- High Mechanical Strength
- Compact Design
- Meets NEC 392.60(B)(A) Bonding Requirements

Suggested Specifications:

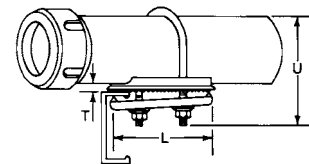
"Raceways connected to cable trays shall be properly bonded using UL Listed and CSA Certified bolted mechanical connectors made from malleable iron, hot dip galvanized components and steel, mechanically galvanized bolts. The cable tray conduit clamps shall be O-Z/Gedney, Type CTC".



Type CTC-0507 & Type CTC-1012
1/2" - 1 1/4" Sizes
Right Angle to Tray

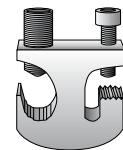


Type CTC-150 & Type CTC-400
1 1/2" - 4" Sizes
Variable Angle to Tray



Rigid or IMC, EMT Trade Size (Inches)	Catalog Number	U-Bolt & Nut Size	Dimensions in Inches				Recommended Ins. Torque In. - Lbs.
			W	L	T	U	
1/2 - 3/4	CTC-0507	1/4 - 20	2 1/4	2 1/4	1/4	2 1/2	60
1 - 1 1/4	CTC-1012	3/8 - 18	2 3/8	2 1/4	1/4	3 1/4	115
1 1/2	CTC-150	5/16 - 18	3 3/8	3 1/2	3/8	3 1/2	115
2	CTC-200	3/8 - 16	4 1/2	4	3/8	4	190
2 1/2	CTC-250	3/8 - 16	5	4 1/2	3/8	4 1/2	190
3	CTC-300	3/8 - 16	5 5/8	5 1/8	3/8	5 1/4	190
3 1/2	CTC-350	3/8 - 16	6 1/8	5 1/2	3/8	5 3/4	190
4	CTC-400	3/8 - 16	6 3/8	6	3/8	6 1/4	190

*Insulated Bushing not included

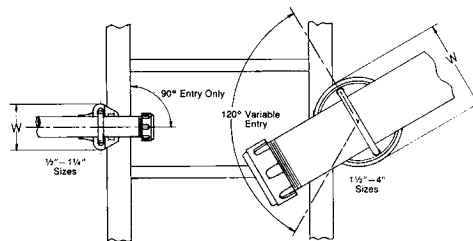


Type CTGC Cable Tray Grounding clamps for use on most types of cable trays. See page MA1.

PATENTED

How Tray-Bond™ Clamps Work:

The edge of the cable tray rail provides the surface on which the serrations in the clamps grounding pad "bite" into the tray. The lower portion of the clamp has a sharp triangular edge which grabs the underside of the rail. As the U-bolt is tightened, all the force is concentrated in the clamping jaws thus providing an excellent grounding path and high strength mechanical attachment.



Material/Finish:

Malleable Iron/Mechanically Galvanized
U-Bolts and Nuts: Steel/Mechanically Galvanized

Third Party Certification:

UL Listed: E-24264

CSA Certified: 009795 for rigid and EMT only

Applicable Third Party Standards:

UL Standard: 467
CSA Standard: C22.2 No. 18

