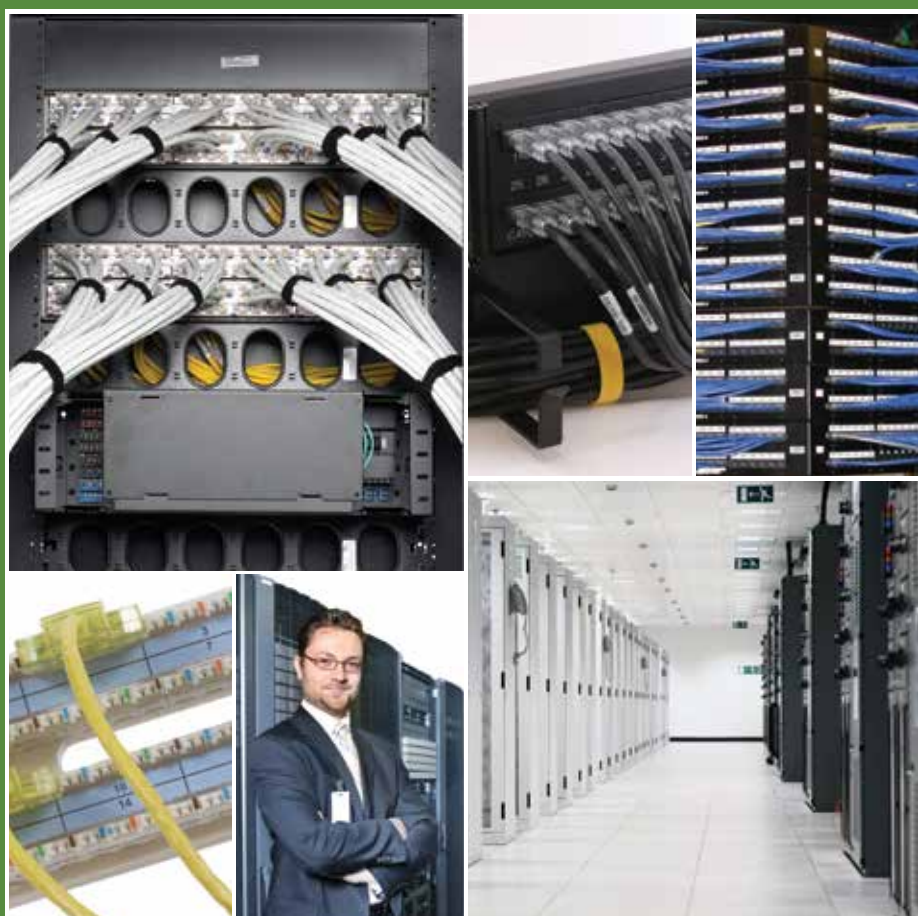




COPPER | Cross Connect

Hubbell's cross connect products lead the industry in innovation, efficiency and component performance. Hubbell's patch panels and blocks are designed to exceed current industry standards and provide a foundation for future applications.





COPPER | Cross Connect

NEXTSPEED® Ascent Category 6A Component.....	C3
NEXTSPEED® Category 6 Component	C5
NEXTSPEED® Category 5e Component.....	C6
Hubbell iSTATION Multimedia and Keystone Patch Panels.....	C7
6-110 Connecting Block System	C9
110 Connecting Block System.....	C10
Rack Mount and Wall Mount Kits	C11
Cross Connect Blocks.....	C12



Performance

Zero-crosstalk contact structure provides the highest performance while maintaining true balance.



Integrated Cable Management

Rear cable manager bars maintain termination integrity. They install with minimal cable disturbance and provide support required for large diameter 6A cables.

Specifications



- 4.5dB NEXT margin over TIA 568-C.2 component at 500MHz
- 1.5dB NEXT margin over ISO/IEC 11801 6_A component requirements at 500MHz
- Supports permanent links: 2-90 meters
- Enhanced common mode design eliminates residual and reflected NEXT and ANEXT
- Designed and tested for 1.5A of continuous current per pair

Standards/Listings/Verifications

- TIA-568-C.2 Category 6A component
- ISO/IEC 11801/60603-7-41 6_A component
- Third Party tested for TIA 568-C.2 requirements Component/Link/Channel
- Category 6A and ISO/IEC 11801 Class E_A
- Mechanical: Verified to TIA-568-C.2
- UL Listed 1863, UL 94 V-0 Flammability Rating ISO9001-2008 Manufacturing Process



Identification

Integrated port and panel labeling, as well as port icon attachment, simplify TIA-606-B compliance.



Unified Design

Labeling, termination, and aesthetics shared across all performance categories, sizes, and configurations.



24-Port Patch Panel
HP6A24



48-Port Patch Panel, Angled
HP6A48A



24-Port Patch Panel
HP6A24W

NEXTSPEED® Ascent Category 6A Patch Panels

Color	Width Inches (mm)	Height Inches (mm)	Ports	Rack Units	Catalog No.
Black	19" (483)	1.75" (45)	24	1	HP6A24
		3.50" (89)	48	2	HP6A48
		7.00" (178)	96	4	HP6A96
White	19" (483)	1.75" (45)	24	1	HP6A24W
		3.50" (89)	48	2	HP6A48W
		7.00" (178)	96	4	HP6A96W

Note: Versions without cable management bar available as HP6A24E and HP6A48E.

NEXTSPEED® Ascent Category 6A Angled Patch Panels

Color	Width Inches (mm)	Height Inches (mm)	Ports	Rack Units	Catalog No.
Black	19" (483)	1.75" (45)	24	1	HP6A24A
		3.50" (89)	48	2	HP6A48A

Note: HP6AxxA angled panel protrudes 4.46" from the plane of the rack. One extra inch of space is recommended between the door and panel angle.

NEXTSPEED® Ascent Category 6A Surface Mount Panel

Description	Catalog No.
12-port, Category 6A, universal, 89D	HP6A12

Rear Cable Management Bars

Type	Description	Catalog No.
19" Rack Mount	Cable management bar and screws	CMBR
	Cable management bar, straight, with screws	ECMBRS
	Cable management bar, 3" with screws	ECMBR3
	Cable management bar, 6" with screws	ECMBR6
HPW Panel Mount	Cable management bar	HPRCMB

Labels for NEXTSPEED® Ascent Category 6A Patch Panels

Description	Catalog No.
Printable front, 6-port, 4800-pack	HPLBL4800

Termination Caps

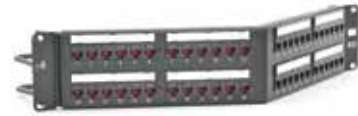
Description	Catalog No.
12-pack	HPSC12



48-Port Patch Panel
HP648



48-Port Patch Panel, Rear View
HP648



48-Port Patch Panel, Angled
HP648A

NEXTSPEED® Category 6 Patch Panels

Color	Width Inches (mm)	Height Inches (mm)	Ports	Rack Units	Catalog No.
Black	19" (483)	1.75" (45)	24	1	HP624
		3.50" (89)	48	2	HP648
		7.00" (178)	96	4	HP696
White	19" (483)	1.75" (45)	24	1	HP624W
		3.50" (89)	48	2	HP648W
		7.00" (178)	96	4	HP696W

Note: Versions without cable management bar available as HP624E and HP648E.

NEXTSPEED® Category 6 Angled Patch Panels

Color	Width Inches (mm)	Height Inches (mm)	Ports	Rack Units	Catalog No.
Black	19" (483)	1.75" (45)	24	1	HP624A
		3.50" (89)	48	2	HP648A

Note: HP6xxA angled panel protrudes 4.46" from the plane of the rack. Hubbell recommends one (1) extra inch of space between the door and panel angle.

NEXTSPEED® Category 6 Component Surface Mount Panel

Description	Catalog No.
12-port, Category 6, universal, 89D	HP612

Rear Cable Management Bars

Type	Description	Catalog No.
19" Rack Mount	Cable management bar and screws	CMBR
	Cable management bar, straight, with screws	ECMBRS
	Cable management bar, 3" with screws	ECMBR3
	Cable management bar, 6" with screws	ECMBR6
HPW Panel Mount	Cable management bar	HPRCMB

Labels for NEXTSPEED® Ascent Category 6A Patch Panels

Description	Catalog No.
Printable front, 6-port, 4800-pack	HPLBL4800

Termination Caps

Description	Catalog No.
12-pack	HPSC12



24-Port Patch Panel
HP5E24



24-Port Patch Panel, Angled
HP5E24A



48-Port Patch Panel
HP5E48

NEXTSPEED® Category 5e Patch Panels

Color	Width Inches (mm)	Height Inches (mm)	Ports	Rack Units	Catalog No.
Black	19" (483)	1.75" (45)	24	1	HP5E24
		3.50" (89)	48	2	HP5E48
		7.00" (178)	96	4	HP5E96
White	19" (483)	1.75" (45)	24	1	HP5E24W
		3.50" (89)	48	2	HP5E48W
		7.00" (178)	96	4	HP5E96W

Note: Versions without cable management bar available as HP5E24E and HP5E48E.

NEXTSPEED® Category 5e Angled Patch Panels

Color	Width Inches (mm)	Height Inches (mm)	Ports	Rack Units	Catalog No.
Black	19" (483)	1.75" (45)	24	1	HP5E24A
		3.50" (89)	48	2	HP5E48A

Note: HP5ExxA angled panel protrudes 4.46" from the plane of the rack. Hubbell recommends one (1) extra inch of space between the door and panel angle.

Category 5e Component

Description	Catalog No.
12-port, Category 5e, universal, 89D	HP5E12

Rear Cable Management Bars

Type	Description	Catalog No.
19" Rack Mount	Cable management bar and screws	CMBR
	Cable management bar, straight, with screws	ECMBRS
	Cable management bar, 3" with screws	ECMBR3
	Cable management bar, 6" with screws	ECMBR6
HPW Panel Mount	Cable management bar	HPRCMB

Labels for NEXTSPEED® Ascent Category 6A Patch Panels

Description	Catalog No.
Printable front, 6-port, 4800-pack	HPLBL4800

Termination Caps

Description	Catalog No.
12-pack	HPSC12



Capacity

Ideal solution where rack space is at an absolute premium, add-as-you-go flexibility, mixed jack performance, and color-coding are desired.



Durability

Metal rolled edge construction eliminates flex.

Specifications



- High density form factor saves space in the datacenter
- Fits all Hubbell HXJ and HJ jacks
- Opens up rack real-estate
- Color coding: jacks are available in 14 different color offerings for distinctive color-coding

Specifications

- Panel material: cold rolled steel
- Durable, black powder coat finish

Standards/Listings/Verifications

- Complies with CEA-310-E rack mount standard
- UL Listed 1863



Keystone Design

Front- or rear-loading on HPJ Series simplifies installation, enables moves, adds and changes, and provides migration path.



Integration Labeling

Integrated label fields on HPJ Series accept office printable label strips.



Super HD Patch Panel, Angled
UDX48A1U



Front-Loading Patch Panel, Angled
HPJ48A



Shielded Patch Panel
HPJS24

UDX Super High-Density Panel

Type	Color	Width Inches (mm)	Height Inches (mm)	Ports	Rack Units	Catalog No.
Flat	Black	19" (483)	1.75" (45)	48	1	UDX48E1U
Angled	Black	19" (483)	1.75" (45)	48	1	UDX48A1U

Note: Only accepts HXJ/HJ6A jacks.

HPJ Multimedia Jack Panels, Unloaded

Type	Color	Width Inches (mm)	Height Inches (mm)	Ports	Rack Units	Catalog No.
Flat	Black	19" (483)	1.75" (45)	24	1	HPJ24
			3.50" (89)	48	2	HPJ48
			5.25" (133)	72	3	HPJ72
Angled	Black	19" (483)	1.75" (45)	24	1	HPJ24A
			3.50" (89)	48	2	HPJ48A
89D	Black	–	–	12	–	HPJ1289*

*Pre-mounted on an 89D bracket.

Hubbell iSTATION Patch Panels, Front-Loading, Unloaded

Type	Opening Size	Width Inches (mm)	Height Inches (mm)	No. of Total Units	Catalog No.
Flat	3 Units	19" (483)	3.50" (89)	12-1 Unit Modules	HPJ12IMU

Note: Use only Hubbell iSTATION 1U modules. Complete listing of Hubbell iSTATION modules sold separately in this section.

Angled Blank Panels and Cover

Type	Color	Width Inches (mm)	Height Inches (mm)	Ports	Rack Units	Catalog No.
Angled	Black	19" (483)	1.75" (45)	Blank	1	ABP175
			3.50" (89)	Blank	2	ABP350
Cover	Black	–	–	–	–	APC

Shielded Patch Panels, Unloaded

Supplied with Cable Management Bar

Type	Color	Width Inches (mm)	Height Inches (mm)	Ports	Rack Units	Catalog No.
Flat	Black	19" (483)	1.75" (45)	24	1	HPJS24
			3.50" (89)	48	2	HPJS48

Note: Shielded jacks sold separately; see page B4.

Rear Cable Management Bars

Description	Catalog No.
HPW panel mount for HPJ Series	HPRCMB
UDX panel mount	RCMB

Labels for HPJ Series Patch Panels

Description	Qty	Catalog No.
Printable labels, 6-port	4800-pack	HPJLBL4800
Replacement 6-port module and label holder for HPJ Series, Black	1	HPJ6M

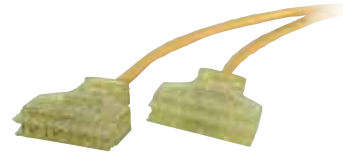
Note: Not for HPJS Series



Field Termination Kit
6110FTK64WL



Termination Tool
6110MPPDT



Factory Terminated Patch Cords
6110PCL3

Field Termination Kits, 6-110

Description	Catalog No.
6-110/64-pair field termination kit with standoff legs	6110FTK64WL
6-110/64-pair field termination kit without standoff legs	6110FTK64NL
6-110/192-pair field termination kit with standoff legs	6110FTK192WL

Termination Tool, 6-110/4-Pair

Description	Catalog No.
Termination tool, 4-pair, 6-110 (includes head and blades)	6110MPPDT
Replacement tool head, 6-110 (includes blades)	6110MPPDT1

Note: 6-110 tool is not compatible with 1-punch termination tool.

Field Terminated Patch Plugs

Includes (1) patch plug base, (1) patch plug cover, and (1) cable tie

Description	Catalog No.
Category 6, 6-110, 4-pair, yellow	6110FPP4PR

Factory Terminated Patch Cords

Color: Yellow		
Length	6-110 to 6-110	6-110 to RJ45 (T568B)
3'	6110PCL3	6119PCL3
5'	6110PCL5	6119PCL5
7'	6110PCL7	6119PCL7
9'	6110PCL9	6119PCL9
12'	6110PCL12	6119PCL12

Connecting Blocks, 6-110/4-Pair

Description	Catalog No.
Connecting blocks, 6-110/4-pair	6110CB4PR10

Hubbell Labeling Solutions, Cross Connect, 6-110/110

The Hubbell labeling solution 110 laser-printable label sheets and covers can be mounted between each wiring channel to identify individual station ports or pair counts.

Description	Color	Catalog No.
Laser-printable label sheets, 10-pack	White	XPL11010W
	Yellow	XPL11010Y
	Blue	XPL11010B



110 Wiring Blocks
110BLKxxBWL



110/100-Pair, 4-Pair Blocks
Field Termination Kit
110BLK100FTK4



Field Termination Patch Plugs
110FPP4PR

Wiring Blocks, 110

With removable standoff legs

Description	Catalog No.
110/50-pair	110BLK50BWL
110/100-pair	110BLK100BWL
110/300-pair	110BLK300BWL

Field Termination Kits, 110

Description	With	Catalog No.
110/50-pair	4-pair blocks	110BLK50FTK4
	5-pair blocks	110BLK50FTK5
110/100-pair	4-pair blocks	110BLK100FTK4
	5-pair blocks	110BLK100FTK5
110/300-pair	4-pair blocks	110BLK300FTK4
	5-pair blocks	110BLK300FTK5

Termination Tool, 110/5-Pair

Designed to seat 110 connecting blocks and terminate and cut UTP cable on 110 wiring blocks

Description	Catalog No.
Termination tool, includes head and blades	T5PPD110

Field Terminated Patch Plugs

Includes (1) patch plug base, (1) patch plug cover, (1) cable tie

Description	Catalog No.
Category 5e, 110, 4-pair, gray	110FPP4PR

Factory Terminated Patch Cords

Color: Yellow

Length	110 to 110	110 to RJ45 (T568B)
3'	PC110C5EL3	PC119C5EL3
5'	PC110C5EL5	PC119C5EL5
7'	PC110C5EL7	PC119C5EL7
9'	PC110C5EL9	PC119C5EL9
12'	PC110C5EL12	PC119C5EL12

Connecting Blocks, 110

110 connecting blocks are terminated to the 110 wiring blocks using the 110/5-pair termination tool; available in 4- and 5-pair sizes

Description	Catalog No.
110/4-pair, 10-pack	110CB4PR10
110/5-pair, 10-pack	110CB5PR10

Hubbell Labeling Solutions, Cross Connect, 6-110/110

The Hubbell labeling solution 110 laser-printable label sheets and covers can be mounted between each wiring channel to identify individual station ports or pair counts.

Description	Color	Catalog No.
Laser-printable label sheets, 10-pack	White	XPL11010W
	Yellow	XPL11010Y
	Blue	XPL11010B



Rack Mount Kit, 6-110
6110RMI



Rack Mount Kit, 110
110RMxx



Rack Mount Kit, 110
110RMxxNT

COPPER | CROSS CONNECT

Rack Mount Kits, 6-110

Category 6

Pairs	Rack Units	Troughs	Catalog No.
128-pair	3U	With	6110RM1
	2U	Without	6110RM1NT

Rack Mount Kits, 110

Category 5e, with cable management

Pairs	Rack Units	Connecting Blocks	Catalog No.
100-pair	2U	4-pair	110RM14
		5-pair	110RM15
200-pair	3U	4-pair	110RM24
		5-pair	110RM25

Category 5e, without cable management

100-pair	1U	4-pair	110RM14NT
		5-pair	110RM15NT
200-pair	2U	4-pair	110RM24NT
		5-pair	110RM25NT



Cable Management Trough with Legs
110TRA



Cable Management Trough without Legs
110TRB

Wall Mount Kits, 6-110/110

Kit Contents/Quantities:

6-110 Kit	110 Kit	Item
1	1	Wall mount tower frame
1	1	Bottom cable trough
3	-	6-110/64-pair wiring blocks without legs
-	3	100-pair wiring blocks without legs
48	-	6-110/4-pair connecting blocks
-	60	110/4-pair connecting blocks
-	12	110/5-pair connecting blocks
3	3	Cable management troughs without legs
6	6	Clear label holders
6	6	White paper designation strips

Category 6 Kit

Description	Catalog No.
6-110/192-pair	6110WMK

Category 5e Kit

Description	Catalog No.
110/300-pair	110WMK

Cable Management Troughs

Description	Catalog No.
With legs	110TRA
Without legs	110TRB

Cable Management Troughs

Description	Catalog No.
With legs	110TRA
Without legs	110TRB



66M Modular 66
HPW66M150



66B Modular 66
HPW66B16



12-Port Block
BR258066A



Backboard
HPW66BB



89D Bracket
HPW89D

Modular 66 Cross Connect Blocks, 66M

Description	Block Size	Capacity	Catalog No.
66M block, Category 5 with cover	4 x 50	50-pair	HPW66M150C5
66M block	4 x 25	25-pair	HPW66M125
	4 x 50	50-pair	HPW66M150
66M cover	–	–	HPW66MCVR

Modular 66 Cross Connect Blocks, 66B

Description	Block Size	Capacity	Catalog No.
66B block, split (3x), with cover	6 x 6	6-pair	HPW66B36
66B block cover for HPW66B 425 + 350	–	–	HPW66BCVR
66M block	6 x 12	6-pair	HPW66B16
66B block 25-pair, split (4x)	6 x 50	25-pair	HPW66B425
66B block 50-pair, split (4x)	6 x 50	50-pair	HPW66B350

12- and 16-Port Blocks

Description	Capacity	Wiring	Jack Openings	Catalog No.
Modular 66 block	50-pair	T568B	12-8 pos. jacks	BR258066A
		USOC-RJ25	16-6 pos. jacks	BR256066A

Modular 66 Cross Connect Block Accessories

Description	Catalog No.
Cable routing spool without screw	HPW66SPLA
Cable routing spool with screw	HPW66SPLB
89B bracket (use to mount 66M series blocks)	HPW89B
89D bracket (use to mount 66M series blocks)	HPW89D
Backboard (blue, for 89D and 89B brackets); includes (2) 89B brackets as shown	HPW66BB
66B bracket (use to mount 66B series blocks)	HPW66BBRKT
Bridging clip (0.5" x 0.25"); 100-pack	HPW66BC100