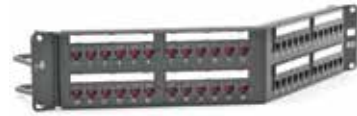




48-Port Patch Panel  
HP648



48-Port Patch Panel, Rear View  
HP648



48-Port Patch Panel, Angled  
HP648A

**NEXTSPEED® Category 6 Patch Panels**

Color	Width Inches (mm)	Height Inches (mm)	Ports	Rack Units	Catalog No.
Black	19" (483)	1.75" (45)	24	1	<b>HP624</b>
		3.50" (89)	48	2	<b>HP648</b>
		7.00" (178)	96	4	<b>HP696</b>
White	19" (483)	1.75" (45)	24	1	<b>HP624W</b>
		3.50" (89)	48	2	<b>HP648W</b>
		7.00" (178)	96	4	<b>HP696W</b>

Note: Versions without cable management bar available as HP624E and HP648E.

**NEXTSPEED® Category 6 Angled Patch Panels**

Color	Width Inches (mm)	Height Inches (mm)	Ports	Rack Units	Catalog No.
Black	19" (483)	1.75" (45)	24	1	<b>HP624A</b>
		3.50" (89)	48	2	<b>HP648A</b>

Note: HP6xxA angled panel protrudes 4.46" from the plane of the rack. Hubbell recommends one (1) extra inch of space between the door and panel angle.

**NEXTSPEED® Category 6 Component Surface Mount Panel**

Description	Catalog No.
12-port, Category 6, universal, 89D	<b>HP612</b>

**Rear Cable Management Bars**

Type	Description	Catalog No.
19" Rack Mount	Cable management bar and screws	<b>CMBR</b>
	Cable management bar, straight, with screws	<b>ECMBRS</b>
	Cable management bar, 3" with screws	<b>ECMBR3</b>
	Cable management bar, 6" with screws	<b>ECMBR6</b>
HPW Panel Mount	Cable management bar	<b>HPRCMB</b>

**Labels for NEXTSPEED® Ascent Category 6A Patch Panels**

Description	Catalog No.
Printable front, 6-port, 4800-pack	<b>HPLBL4800</b>

**Termination Caps**

Description	Catalog No.
12-pack	<b>HPSC12</b>