

HUBBELL®

HUBBELL®
Wiring Systems

Healthcare Application Guide

*When Safety, Reliability
and Performance Matter*

*Wiring Device and Datacom Solutions
for Healthcare Applications*





The Hubbell Healthcare Story

When reliability and performance matter



Hubbell Hospital Grade

Hospital Grade is the receptacle of choice when specifying devices for healthcare. While the green dot signifies UL compliance, hospital grade devices are not all the same. Hubbell was instrumental in creating hospital grade and has been providing maximum value for healthcare facilities ever since.



Safety

Safety of patients, visitors and healthcare workers is a key concern for hospitals. Hubbell takes safety extremely seriously, providing a variety of products that ensure superior protection of people and property.



- Tamper-Resistant Receptacles
- GFCI and Isolated Ground Receptacles
- Motor Disconnects
- TredTrak® and AccessTrak®
- Watertight Plugs and Connectors
- Stainless Steel Plates
- Hospital Grade Surge Devices
- Liquidtight
- HG LED Receptacles
- Call Switches



Installation Efficiency

The labor-saving enhancements of Hubbell products keep renovation, modernization, and new construction projects on schedule and allow contractors to complete more jobs in a smaller amount of time.



- Hubbell SNAPConnect™ Receptacles
- Hubbell SystemOne Floor Boxes and Fire-Rated Poke-Throughs
- Aluminum Raceway
- BIDnet™ Copper and Fiber Pre-Terminated Assemblies
- Hubbell iSTATION Audio/Video Connections
- Service Poles
- Pre-Wired Raceway
- Pre-Wired Work Boxes
- Wireless Sensors



Energy Efficiency

By providing energy savings, ease of installation and the ability to reuse and reconfigure systems, Hubbell ensures maximum value and sustainability for today's hospital facilities.



- Occupancy and Daylight Sensors
- Wireless Sensors
- USB Receptacles



Delivery

Delivery systems from Hubbell offer safe and effective routing, management, delivery, and protection of a wide range of power, data, and AV solutions.



- Hubbell SystemOne Floor Boxes and Fire-Rated Poke-Throughs
- Surface Raceway
- Wall, Trench and Floor Duct
- Flat Panel TV Boxes
- Pre-Wired Work Boxes
- Table Top Boxes
- Power Poles
- Wire Basket Tray



Datacom

Hospitals are depended on for the reliability of their services, procedures and patient care. Hubbell devices ensure the reliability that hospitals and healthcare workers need for complete peace of mind.



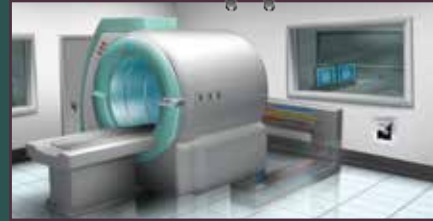
- Copper and Fiber Solutions
- Shielded Jacks
- Audio/Video Connections
- HDMI Extender
- Grounding and Bonding
- F-Type Connectors
- AV Plug and Play Systems
- Cable Management
- Remote Equipment Cabinets
- Racks and Enclosures



Critical Care



Patient Care



Diagnostics

Table of Contents

2 Healthcare Solutions
A look at Safety, Installation Efficiency, Energy Efficiency, Delivery and Datacom in the Healthcare Environment

6 Critical Care
Insulgrip® Plugs and Connectors
Category 6A Jacks
IFP Plates

7 ICU Operating Rooms
HBL8300 Series Receptacles
Stainless Steel Plates

8 Patient Rooms
SNAPConnect® Receptacles and Switches
Hubbell iSTATION Plates and Modules
Ceiling Enclosure Box and
HDMI 110 Extenders

10 Nurse's Station
Surge and Isolated Ground Receptacles
Hospital Grade USB Charger Receptacles
Category 6, 5e,3 and USOC Jacks

11 Diagnostics
MRI Receptacles
Mobile X-Ray Devices
Shielded Jacks
Patch Cords

12 Examination Room
H-MOSS® Occupancy Wall Switches
Hubbell-PRO Receptacles
Secure-IT® Plates

13 Physical Therapy Areas
Hubbell SystemOne
Floor Boxes and Fire-Rated Poke-Throughs
Snap Fit Connectors

14 Auditorium and Conference Room
Hubbell SystemOne 6 and 8 Inch
Fire-Rated Poke-Throughs
Multimedia Connectivity Devices
X-END Patch Cords





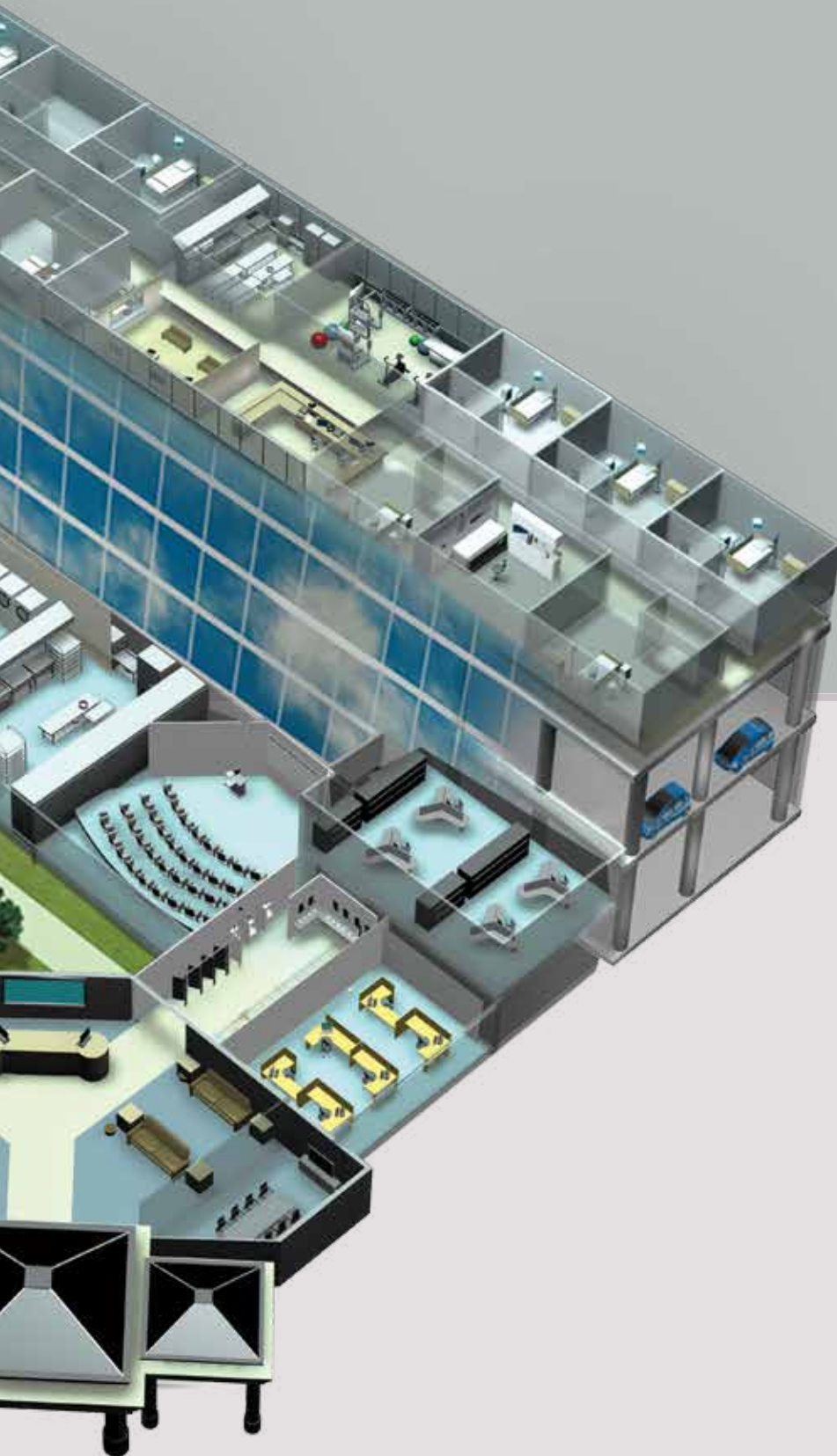
Waiting Areas



Data Centers



Food Services



15 Administration
 H-MOSS® Occupancy Ceiling Sensors
 Pre-Wired Work Surface Boxes
 Hubbell iSTATION Furniture Plates
 Patch Cords

16 Common Areas
 Tamper-Resistant Hospital Grade
 Receptacles
 USB Charger Receptacle
 Wireless Access Box
 AV Wall Enclosure

17 Restrooms
 Hospital Grade GFCI Receptacles
 H-MOSS® Ultrasonic Occupancy Sensors
 Wireless Sensors

18 Data Centers
 XXL Organizers
 BIDnet
 H2 Series Network Cabinet,
 Patch Cords
 Fiber Rack Enclosures
 Fiber Trunk Assemblies
 Grounding and Bonding

20 Laboratories
 Aluminum Raceway
 UTP and FTP Cable
 Category 6A Shielded Jacks

21 Kitchen and Food Services
 Watertight Safety-Shroud® Twist-Lock®
 Watertight Twist-Lock®
 HI-Impact® RJ45 Connectors
 REBOX® Remote Equipment Cabinet

22 Maintenance and Engineering
 Twist-Lock® Plugs, Connectors &
 Receptacles
 Stainless Steel and Non-Metallic
 Disconnects
 Industrial Cord Reels

23 Outdoor Areas
 Mechanical Interlocks,
 Hose and Cable Protection
 Electric Vehicle Charging Station
 H-MOSS®|MAXX™ Sensors



Emergency Power Circuits

Emergency systems that supply power in the event of an outage must be identified according to the National Electric Code (NEC®) Article 517.30(E). Hubbell offers receptacles and wall plates in a distinct color red and a selection of wall plates clearly marked "EMERGENCY" to meet this requirement.

Critical care spaces in a healthcare facility require 100% reliable power and data connections without interruptions. These demanding 24/7 environments encounter significant abuse such as abrupt plug removal and numerous insertions, being impacted with carts, beds and gurneys, exposure to harsh cleaning disinfectants—all of which can contribute to damage.

Hubbell products are put through comprehensive rigorous UL, CSA, TIA, IEEE and ETL testing, to meet requirements above and beyond the standards providing the industry with one of the highest performing most reliable devices.

Insulgrip® Hospital Grade Plugs and Connectors

- Ribbed nylon housing is impact and chemical resistant
- Powerful cord grip prevents conductor slippage and strain on terminals
- Integral VARI-SIZE® insert adjusts to a wide range of cord sizes



Amps	NEMA Rating	Poles/Wires	Description	Black/White	Transparant	Valise (White)
15A	5-15	2-Pole	Plug	HBL8215C	HBL8215CT	HBL8115V
125V		3-Wire	Angled Plug Connector	— HBL8219C	HBL8215CAT HBL8219CT	— HBL8119V
20A	5-20	2-Pole	Plug	HBL8315C	HBL8315CT	HBL8364V
125V		3-Wire	Angled Plug Connector	— HBL8319C	HBL8315CAT HBL8319CT	— —

NEC® is a registered trademark of the National Fire Protection Association (NFPA).



TIA Healthcare Standard TIA-1179 Area: **Critical Care**
Communication recommendations for outlet densities

Area	Workstation	LAN Connections
ICU	High Station	>14 in each WA
Neonatal ICU	High Station	>14 in each WA
Recovery	High Station	>14 in each WA

NEXTSPEED® Ascent Category 6A Jacks

- TIA and ISO category 6A component compliance
- Labor savings: exclusive 1-punch termination reduces termination time by 75%
- Mating cycles exceed industry standard by two times



Delivery	Color	Catalog No.	Color	Catalog No.	Color	Catalog No.
1 per Bag/Cartron of 25 Add suffix "25" for delivery of 25 per Bag/Cartron of 1	Almond	HJ6AAL	Gray	HJ6AGY	Red	HJ6AR
	Black	HJ6ABK	Green	HJ6AGN	Telco Ivory	HJ6ATI
	Blue	HJ6AB	Office White	HJ6AOW	White	HJ6AW
	Electric Ivory	HJ6AEI	Orange	HJ6AOR	Yellow	HJ6AY
	Gold	HJ6AGL	Purple	HJ6AP		

IFP Faceplates

- Fits all Hubbell keystone connections (AV, data and fiber)
- Secure; must remove plate to access connectivity



Gang	Color	1-Port	2-Port	3-Port	4-Port	6-Port
Single Gang	Almond	IFP11AL	IFP12AL	IFP13AL	IFP14AL	IFP11AL
	Black	IFP11BK	IFP12BK	IFP13BK	IFP14BK	IFP11BK
	Electric Ivory	IFP11EI	IFP12EI	IFP13EI	IFP14EI	IFP11EI
	Gray	IFP11GY	IFP12GY	IFP13GY	IFP14GY	IFP11GY
	White	IFP11W	IFP12W	IFP13W	IFP14W	IFP11W
Two Gang	Almond	IFP26AL	IFP29AL	IFP212AL		
	Black	IFP26BK	IFP29BK	IFP212BK		
	Electric Ivory	IFP26EI	IFP29EI	IFP212EI		
	Gray	IFP26GY	IFP29GY	IFP212GY		
	White	IFP26W	IFP29W	IFP212W		



ICU and Operating Rooms



Like critical care areas, the ICU and operating rooms in a healthcare facility require 100% reliable connections that support highly advanced electronic equipment, like monitoring devices, portable imaging equipment, and various networking connections—all of which require safe, reliable power, and extended bandwidth to ensure uninterrupted performance.

HBL8200 Series Hospital Grade Receptacles

- Exclusive nickel-plated bypass power contact design
- Four-point grounding system provides redundant grounding
- Deep body design and one-piece nickel plated brass ground strap



NEMA	Rating	Color	Duplex	Illuminated	Single	Power Indicating Tamper-Resistant
	15A 125V	Ivory	HBL8200I	HBL8200ILI	HBL8210I	8200IVLTR
		Red	HBL8200R	HBL8200ILR	HBL8210R	8200REDLTR
		White	HBL8200W	HBL8200ILW	HBL8210W	8200WLTR
		Brown	HBL8200	—	HBL8210	8200LTR
		Gray	HBL8200GY	HBL8200ILGY	HBL8210GY	8200GYLTR
		Light Almond	HBL8200LA	—	—	8200LALTR
	20A 125V	Ivory	HBL8300I	HBL8300ILI	HBL8310I	8300IVLTR
		Red	HBL8300R	HBL8300ILR	HBL8310R	8300REDLTR
		White	HBL8300W	HBL8300ILW	HBL8310W	8300WLTR
		Brown	HBL8300	—	HBL8310	8300LTR
		Gray	HBL8300GY	HBL8300ILGY	HBL8310GY	8300GYLTR
		Light Almond	HBL8300LA	—	—	8300LALTR



Tamper-Resistant Receptacles

Compliant with NEC® 406.12 and NEC®517-18(c), SNAPConnect® Tamper-Resistant Receptacles are acceptable for use in residential dwellings and pediatric locations.



Receptacles with LED Power Indicators

Used most often to identify emergency circuits in hospitals, the two LED power indicators, bright enough to be visible in low light and bright daylight conditions, identify devices with power.



SSF Stainless Steel Plates

- Superior corrosion resistance
- Designed to fit Hubbell iSTATION modules and AV connectors
- Ease of use: front and rear-loading capabilities improve tamper resistance



Gang	Ports	Catalog Number	With Label Field
Single Gang	1	SSF11	SSFL11
	2	SSF12	SSFL12
	3	SSF13	SSFL13
	4	SSF14	SSFL14
	6	SSF16	SSFL16
	Two Gang	4	SSF204
6		SSF206	SSFL206
9		SSF209	SSFL209
12		SSF212	SSFL212



All SSF plates will accept AV keystone connectors and XCELERATOR jacks.



TIA Healthcare Standard TIA-1179 Area: Surgery/Procedure/Operating Rooms

Communication recommendations for outlet densities

Area	Workstation	LAN Connections
Operating Room	High Station	>14 in each WA
ICU	High Station	>14 in each WA





SNAPConnect®
Pigtailed Connector

Audible SNAP

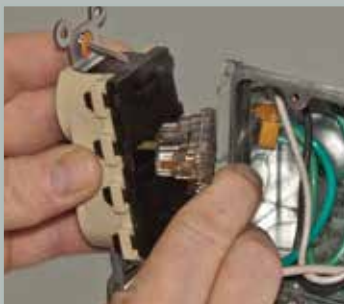
- Indicates solid connection
- Secure, easy grip latch

Inspection of power contacts

- Clear terminal housing
- No exposed metal

No Special Tester Required

- .085 inch keyhole accepts the probe points found on the most common voltage testers and digital multi-meters



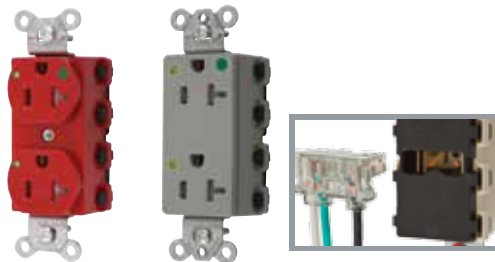
Installation Efficiency

SNAPConnect® devices maximize installation efficiency in commercial, institutional and healthcare applications where specialty devices are required by the NEC. SNAPConnect Tamper Resistant (TR), Isolated Ground (IG), LED Power Indicating, and Surge Suppressing Duplex Receptacles are available with Standard and Decorator faces, 15 and 20A, and in Specification or Hospital Grade. Combination TR/IG, TR/LED, or TR/IG with LED are perfect to identify Emergency Circuits.

To assist healthcare facilities get spaces up and running faster or facilitating moves, adds and changes, Hubbell's SNAPConnect® receptacles and iSTATION work area solutions save significant termination time while providing a fast and consistent installation every time.

SNAPConnect® Receptacle and Switches

- Fast, easy installation with SNAPConnect® modular terminal instead of pigtails
- Clear terminal housing with no exposed live parts
- Compact size with a clean finished look



SNAPConnect® Extra Heavy Duty Hospital Grade Receptacle with Power Indicating LED



Rating	Color	Duplex Standard	Tamper Resistant	Style Line Decorator Standard	Tamper Resistant
15A 125V	Ivory	SNAP8200IL	SNAP8200ILTR	SNAP2172IL	SNAP2172ILTR
	Red	SNAP8200RL	SNAP8200RLTR	SNAP2172RL	SNAP2172RLTR
	White	SNAP8200WL	SNAP8200WLTR	SNAP2172WL	SNAP2172WLTR
20A 125V	Ivory	SNAP8300IL	SNAP8300ILTR	SNAP2182IL	SNAP2182ILTR
	Red	SNAP8300RL	SNAP8300RLTR	SNAP2182RL	SNAP2182RLTR
	White	SNAP8300WL	SNAP8300WLTR	SNAP2182WL	SNAP2182WLTR

SNAPConnect® Extra Heavy Duty Hospital Grade Receptacle

Rating	Color	Duplex Standard	Tamper Resistant	Style Line Decorator Standard	Tamper Resistant
15A 125V	Ivory	SNAP8200INA	SNAP8200ITR	SNAP2172INA	SNAP2172ITR
	Red	SNAP8200RNA	SNAP8200RTR	SNAP2172RNA	SNAP2172RTR
	White	SNAP8200WNA	SNAP8200WTR	SNAP2172WNA	SNAP2172WTR
20A 125V	Ivory	SNAP8300INA	SNAP8300ITR	SNAP2182INA	SNAP2182ITR
	Red	SNAP8300RNA	SNAP8300RTR	SNAP2182RNA	SNAP2182RTR
	White	SNAP8300WNA	SNAP8300WTR	SNAP2182WNA	SNAP2182WTR

SNAPConnect® Heavy Duty Hospital Grade GFCI Receptacle

Rating	Color	Standard	Tamper/Weather Resistant
15A 125V	Ivory	GFTR8200SNAPINA	GFTR8200SNAPINA
	Red	GFTR8200SNAPRNA	GFTR8200SNAPRNA
	White	GFTR8200SNAPWNA	GFTR8200SNAPWNA
20A 125V	Ivory	GFTR8300SNAPINA	GFTR8300SNAPINA
	Red	GFTR8300SNAPRNA	GFTR8300SNAPRNA
	White	GFTR8300SNAPWNA	GFTR8300SNAPWNA

SNAPConnect® Right Angle Pigtailed Connector, 600V

Description	Wire Type	Assembled in USA
Clear right angle terminal with 6 inch leads	Solid	SNAP1RNA
#12 AWG THHN/THWN-2; Polycarbonate housing material	Stranded	SNAP2RNA

SNAPConnect® Specification Grade Toggle and Style Line® Switches and PigTailed Connector

Description	Color	Toggle Series		Illuminated Toggle	Single Pole
		Single Pole	Three Way		
15A, 120-277V AC	Ivory	SNAP1201INA	SNAP1203INA	15A, Blue LED Light on with load off.	SNAP2101ILINA
	Red	SNAP1201RNA	SNAP1203RNA		SNAP2101ILRNA
	White	SNAP1201WNA	SNAP1203WNA		SNAP2101ILWNA
20A, 120-277V AC	Ivory	SNAP1221INA	SNAP1223INA	20A, Blue LED Light on with load off.	SNAP2121INA
	Red	SNAP1221RNA	SNAP1223RNA		SNAP2121RNA
	White	SNAP1221WNA	SNAP1223WNA		SNAP2121WNA
Description	Wire Type	Single Pole (3 Wires)	Single Pole with Pilot		
Clear right angle terminal with 6 inch leads; #12 AWG THHN/THWN-2; Polycarbonate housing material	Solid Stranded	SNAPSP1NA SNAPSP2NA	SNAPSP1NA SNAPSP2NA		

Many of these products are Assembled in USA, as indicated, and many are Buy American Compliant. Please contact Hubbell with any certification requirements.



Patient Rooms



More and more patient rooms are filled with many electronic devices that require various styles of Audio/ Video, Data, PoE and power connections. While the reliability of monitoring care equipment is the primary concern, functionality, safety and aesthetics are also needed. Hubbell's tamper-resistant receptacles protect people, illuminated devices help patients and staff locate switches and receptacles, and Style Line® Decorator devices match room décor.

Hubbell iSTATION Plates and Modules

- High density capabilities
- Pre-terminated X-END assemblies eliminate field termination on job site
- Supports multiple applications and connector configurations



Hubbell iSTATION Modular Face Plate Frames and Stainless Steel Plates

Description	Gang	Catalog No.	Description	Gang	Catalog No.
Front loading frame	1	IMF1xx	Front loading frame;	1	IMS1
	2	IMF2xx	stainless steel	2	IMS2
				3	IMS3
				4	IMS4

The IMF/IMS series accept any modules in 3 unit combinations for 1-gang; and 6 unit combinations for 2-gang applications. For color choices, replace **xx** with **AL** (Almond), **BK** (Black), **GY** (Gray), **I** (Ivory), **LA** (Light Almond) or **W** (White).

Hubbell iSTATION Unloaded Modules

Description	Catalog No.	Description	Catalog No.
Keystone; 1-port; 1 unit	IM1K1xx	HD15/9-pin or HDMI; 1 unit	IMBDS1xx
Keystone; 2-port; 1 unit	IM2K1xx	w/ 3.5mm Stereo Jack; 1.5 unit	IMBDSA15xx
SC Angled; 1-duplex; 1.5 unit	IM1SCA15xx	w/ 3.5mm SJ+AV Conn; 2 unit	IMB153X2xx
SC Angled; 2-duplex; 2 unit	IM2SCA2xx		

For color choices, replace **xx** with **AL** (Almond), **BK** (Black), **GY** (Gray), **I** (Ivory), **LA** (Light Almond) or **W** (White).

Hubbell HDMI Extenders

- Locating a display device up to 147 feet away is as simple as pulling 2 additional UTP cables to a drop
- Terminate with Category 5e, 6 or 6A UTP plenum or non-plenum cable
- Kit includes a "Source" and "Display" frame/module and a 5 volt DC power supply



HDMI High-Definition 110 UTP Video Extender

Description	DC	Installation	Color	Decorator	Module - 2U
110 UTP HDMI extender (pair)	5 Volt	2 4-pair UTP cables	Black	ISFH110BK	IMH110ST2BK
			Electric Ivory	ISFH110EI	IMH110ST2EI
			Gray	ISFH110GY	IMH110ST2GY
			Office White	ISFH110OW	IMH110ST2OW
			White	ISFH110W	IMH110ST2W

AV Ceiling Enclosure

- Manage multiple applications inside one enclosure
- Flush mounted, white enclosure
- Loaded with two Hubbell 20A duplex receptacles and a 2-gang back box



Description	Rating	Catalog Number
Wireless Access Point Ceiling Box	Non-Plenum	AVCE1
White enclosure 24"x12"x 8", (2) 20 Amp duplex receptacles & 2-gang back box	Plenum Rated	AVCE1P
Data Kit		AVCE1KIT



The Digital Age

Patient rooms require more Data and AV connections than ever before. Everything from video distribution, specialty equipment connections to wireless access points and multiple LAN connections are being integrated into these spaces. Also ensures healthcare workers have immediate access to electronic health records and the most effective means of communicating.



TIA Healthcare Standard TIA-1179

Area: **Patient Rooms**

Communication recommendations for outlet densities

Area	Workstation	LAN Connections
Patient Room	High Station	>14 in each WA





USB Charger Duplex Receptacles

- Deliver faster charging options
- Provides convenient USB and electrical power in a standard single-gang electrical opening
- The device's two USB ports offer 3 amps 5VDC rating, and are capable of charging two tablets simultaneously
- An LED indicator lets users know when USB power is available to charge devices
- Hubbell's charger receptacles are energy efficient, going to "sleep mode" when not in use

Nurse's stations are the command center for each patient care area within a healthcare facility. Here it is crucial to maintain accurate and timely records, pharmacy requests, wireless nurse call systems and intra-hospital communication. This requires the highest level of network connectivity and power reliability.

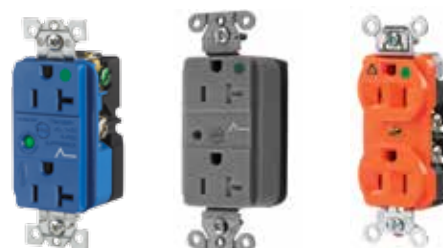
Surge Protection and Isolated Ground Hospital Grade Devices

Isolated Ground

- Isolates ground contacts from the mounting strap
- Green grounding screw connected directly to grounding contacts

Surge Protection

- Green LED indicates power is "on" and device is actively protecting against voltage surges



Surge Protection Receptacles, 20A 125V

Color	SNAPConnect® Tamper-Resistant	TR	Duplex	Isolated Ground
Blue	SNAP8362S			IG8362SA
Gray	SNAP8362GYS			IG8362GYSA
Red	SNAP8362RS			IG8362RSA
White	SNAP8362WS			IG8362WSA

Isolated Ground Receptacles, 20A 125V

Color	SNAPConnect® Tamper-Resistant	TR	Duplex
Red	SNAP8300RIGTR		IG8300R
Orange	SNAP8300IGTR		IG8300

Note: *See page 8 for SNAPConnect® pigtail connectors.

Hospital Grade USB Charger Receptacle

- Two USB ports 3 Amp, 5V DC, Type A, 2.0
- Tamper-Resistant (TR) decorator duplex
- Green LED indicator to show USB power available



Rating	Color	Catalog Number	Color	Catalog Number
20A 125V	Black	USB8300BK	Light Almond	USB8300LA
	Brown	USB8300	Red	USB8300R
	Gray	USB8300GY	White	USB8300W
	Ivory	USB8300I		



TIA Healthcare Standard TIA-1179
Area: **Nurse Station**
Communication recommendations for outlet densities

Area	Workstation	LAN Connections
Nurses Stations	High Station	>14 in each WA
Registration	Med. Station	6-14 in each WA

NEXTSPEED® and SPEEDGAIN® Category 6, 5e, 3, and USOC Jacks

- Verified Category 6 component compliant jack
- One punch termination reduces termination time by 75%
- Mating cycles exceed industry standards by two times



Color*	Category 6	Category 5e	Category 3	6-Position USOC
Black	HXJ6BK	HXJ5EBK	HXJ3BK	HXJUBK
Blue	HXJ6B	HXJ5EB	HXJ3B	HXJUB
Electric Ivory	HXJ6EI	HXJ5EEI	HXJ3EI	HXJUEI
Green	HXJ6GN	HXJ5EGN	HXJ3GN	HXJUGN
Orange	HXJ6OR	HXJ5EOR	HXJ3OR	HXJUOR
Office White	HXJ6OW	HXJ5EOW	HXJ3OW	HXJUOW
Red	HXJ6R	HXJ5ER	HXJ3R	HXJUR
White	HXJ6W	HXJ5EW	HXJ3W	HXJUW
Yellow	HXJ6Y	HXJ5EY	HXJ3Y	HXJUY
Other colors	HXJ6xx	HXJ5Exx	HXJ3xx	HXJUxx

For Color, Replace xx with: **AL** (Almond), **GL** (Gold), **GY** (Gray), **LA** (Light Almond), **P** (Purple) and **TI** (Telco Ivory)

Many of these products are Assembled in USA, as indicated, and many are Buy American Compliant. Please contact Hubbell with any certification requirements.

For complete listing of Hubbell Wiring and Premise products see our full line catalogs.

www.hubbell-wiring.com

Diagnostics



With Hubbell's Hospital Grade MRI Duplex Receptacle, a completely non-magnetic receptacle design is available for Magnetic Imaging areas within hospitals. Hubbellock® Mobile X-Ray Devices include the plugs and receptacles needed to safely and reliably connect and disconnect X-Ray machines.

MRI Hospital Grade Receptacles

- Exclusive nickel-plated bypass power contact design
- Complete non-magnetic construction
- Deep body design and one-piece nickel plated brass ground strap



Description	Color	15A 125V	20A 125V
MRI receptacle, flush, thermoplastic polyester face, back and side wired	Ivory	HBL8200IMRI	HBL8300IMRI
	Light Almond	HBL8200LAMRI	HBL8300LAMRI
	Red	HBL8200RMRI	HBL8300RMRI
	White	HBL8200WMRI	HBL8300WMRI



Wall/Ceiling Duct System

The Hubbell Wall/Ceiling Duct System is utilized in combination with Hubbell's Trench Duct product offering for the enclosure of wiring to X-Ray machines or MRI equipment. Hubbell's aluminum wall duct is used for applications that require non ferrous metal raceways. Wall Duct is available in flush mount and surface mount versions.

Mobile X-Ray Plugs and Receptacles

- Stainless steel construction
- Ergonomic design
- Spring load safety shutter

Description	50A 250V AC	60A 250V AC
Receptacle with stainless steel plate assembly	HBL25505	HBL25605
Receptacle with cast aluminum plate assembly	HBL25503	HBL25603
Replacement receptacle interior	-	IN16494
Plug, with epoxy kit, less cord clamp	HBL25515	HBL25615
Plug, with cord clamp, less epoxy kit	HBL25525	HBL25625



NEXTSPEED® Category 6A Shielded Jacks

- Quick and easy terminal grounding connection
- Tool less termination
- Third-party tested and verified for category 6A component ISO/TIA



Description	Wiring	2 Pk	24 Pk	Description	Color	Catalog Number
Category 6A shielded jacks	B-Wired	SJ6A2A	SJ6A24A	Shield colored dust covers	Blue	IDCSB
	A-Wired	SJ6A2B	SJ6A24B	100 per package	Black	IDCSBK
					Green	IDCSGN
					Orange	IDCSOR
					Yellow	IDCSY

NEXTSPEED® Shielded Category 6A Patch Cords

- Reliable with additional protection against ANEXT and other external noise sources
- Third-party tested and verified for category 6A component



Color	3 ft.	5 ft.	7 ft.	10 ft.	15 ft.	20 ft.	25 ft.
Black	PC6ABK03	PC6ABK05	PC6ABK07	PC6ABK10	PC6ABK15	PC6ABK20	PC6ABK25
Blue	PC6AB03	PC6AB05	PC6AB07	PC6AB10	PC6AB15	PC6AB20	PC6AB25
Gray	PC6AGY03	PC6AGY05	PC6AGY07	PC6AGY10	PC6AGY15	PC6AGY20	PC6AGY25
Yellow	PC6AY03	PC6AY05	PC6AY07	PC6AY10	PC6AY15	PC6AY20	PC6AY25



TIA Healthcare Standard TIA-1179 Area: **Diagnostic and Treatment**
Communication recommendations for outlet densities

Area	Workstation	LAN Connections
MRI & CT Scanner	High Station	>14 in each WA
Simulator Room	High Station	>14 in each WA
Linear Accelerator	High Station	>14 in each WA





Examination Rooms



Dual Technology

Hubbell H-MOSS® Occupancy Sensors are available with dual technology, that uses both passive infrared and ultrasonic sensing technology. Because both technologies are used to detect occupancy, these sensors minimize the risk of false triggering and provide the best performing sensor for most applications.

ASHRAE 90.1-2010

Each enclosed space must have automatic lighting control this is either manual-on (vacancy) operation or auto-on (occupancy) to 50% of lighting power or less. Lighting must be automatically turned off within 30 min. Control must also be provided the occupant to select a two levels of illumination 30-70% and 100%.

Hospitals' and healthcare facilities' examination rooms have a need for safe, reliable power connections and lighting. Pediatric exam rooms require tamper-resistant receptacles. The ample lighting needed in exam rooms are often left on when doctors and patients leave the exam room, wasting significant energy. By simply outfitting these spaces with occupancy sensors, the lights will turn off when the room is vacant, providing immediate energy savings.

H-MOSS® Occupancy Wall Switch Sensors

- No neutral required for fast switch replacement
- Optional Hubbell patented adaptive technology eliminates manual adjustments
- No minimum load requirements



Description	Color	Single Circuit One Button	Dual Circuit Two Buttons
Adaptive Technology, Dual (Ultrasonic and Passive Infrared) wall switch with one or two buttons for manual/auto control, 1,000 sq. ft.	Ivory White	AD2000I1 AD2000W1	AD2000I2 AD2000W2
Description	Color	Standard	with Nightlight
Passive Infrared wall switch, 1,200 sq. ft.; manual adjusting; selectable manual/auto-on operation; dual-voltage 120/277V; 3-way capable	Ivory White	WS2000I WS2000W	WS2000NI WS2000NW

Hubbell-PRO Tamper-Resistant Receptacles with Power Indicating LEDs

- Combination Tamper Resistant and Power Indicating LEDs for pediatric circuits
- Circuit identification marking area
- Triple wire contacts and automatic self grounding staple



Description	Color	15A 125V AC	20A 125V AC
Hubbell-PRO Tamper-Resistant Receptacles with Power Indicating LED	Ivory	8200IVLTR	8300IVLTR
	Gray	8200GYLTR	8300GYLTR
	White	8200WLTR	8300WLTR
	Red	8200REDLTR	8300REDLTR



TIA Healthcare Standard TIA-1179

Area: **Examination Rooms**
Communication recommendations for outlet densities

Area	Workstation	LAN Connections
Procedure Room	Med. Station	6–14 in each WA
Observation Room	High Station	>14 in each WA
Evaluation Room	Med. Station	6–14 in each WA

Secure-IT™ Plates

- The tamper-resistant sliding cover
- Multiple labeling options
- Fiber and multimedia capabilities



Description	Size	Color	Face Plate	Replacement Cover	Cable-Thru Plate
Tamper-Resistant Face Plates	1-gang/4-port	Black	TPF1BK	TPFCLBK	TPCP1BK
	1-gang/4-port	Gray	TPF1GY	TPFCLGY	TPCP1GY
	1-gang/4-port	Office White	TPF1OW	TPFCLOW	TPCP1OW
	1-gang/4-port	White	TPF1WH	TPFCLWH	TPCP1WH

Description	Size	Color	Face Plate	Replacement Cover
Weatherproof Face Plates	1-gang/4-port	Gray	TWPF1GY	ERFCLGY

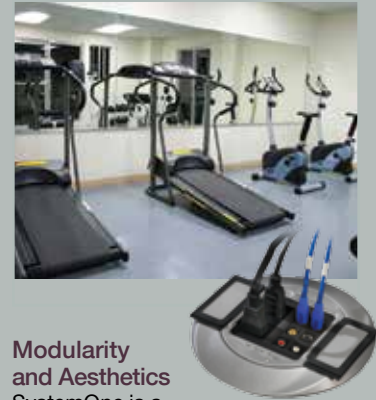
Physical Therapy Areas



Physical therapy centers and spaces provide a variety of treatment options to help patients develop, maintain and restore movement and function. Hubbell has delivery system products including non-metallic multi-service floor boxes that deliver both power and datacom to any point in the room.

Hubbell SystemOne Floor Boxes and Fire-Rated Poke-Throughs

- Multi-service, multimedia and 4x4 applications
- Subplates accommodate various power and data configurations
- Covers are available in black, gray, brass, aluminum and ivory powder coat finishes



Modularity and Aesthetics

SystemOne is a unique, in-floor delivery system that can be installed in either floor boxes or fire-rated poke-throughs. The system uses a modular approach with over twenty subplates that allow various voice, data and AV connector configurations to fit into each. They can be customized to meet virtually every power and communications application and are easily replaced to accommodate future technology expansion.

Floor Boxes

Description	Cat No.
Cast Iron	S1CFB
Steel	S1SFB
Steel AV	S1SFB AV
Non-Metallic	S1PFB

Fire-Rated Poke-Throughs

Description	Factory Assembled Units*	Through Floor Fittings
(4) 20A; (4) keystone	S1PT4X4xx	S1PT4X4FIT
Dual Style Line	S1PTxx	S1PTFIT
Modular AV	S1PT3IMxx	S1PTAVFIT
Furniture Feed	S1PTFFxx	—

Covers

Description	Type	Cat No.
Cast aluminum	Carpet	S1CFCxx
Covers	Tile	S1TFCxx

*Include through floor fitting, cover and subplate
For finish options, replace xx: **AL** (Aluminum Finish), **BRS** (Brass Finish), **BL** (Black) or **GY** (Gray)

Subplates

Description	Description	Description
Style Line® Decorator/GFCI for power and/or datacom applications	Duplex/Duplex for power and/or datacom applications	Duplex/Style Line® Decorator for power and/or datacom applications
S1SP	S1SPDU	S1SPDUSL
(4) 20A and (4) keystone openings. Power can be wired as single or two circuit and isolated ground.	Single Receptacle Opening for 20A-30A Twist-Lock® recep. (1.56" OD) and (2) Keystone openings	Hubbell AV + Power (1) 20A, 125V receptacle and 3 unit recessed iSTATION opening for Data
S1SP4X4	S1SPTL	S1SP3IM

For full offering of SystemOne sub-plates and accessories, please visit our online catalog at hubbell-wiring.com.

Snap Fit Connectors

- Superior performance and signal integrity
- Easily housed in all Hubbell work station and delivery products



F-Type Connectors

Color	F-Connector, Gold, 3 GHz, Pass-Thru, F/F Coupler	F-Connector, Gold, Pass-Thru, F/F Coupler	F-Connector, Gold, Recessed, Pass-Thru, F/F Coupler	RCA to F-Connector, Gold, Pass-Thru, F/F Coupler
Black	SFF3GBK	SFFGBK	SFGRFBK	SFRFBK
Office White	SFF3GOW	SFFGOW	SFGRFOW	SFRFGOW
White	SFF3GW	SFFGW	SFGRFW	SFRFGW



ISF Series Outlet Frames and Wallplates

Hubbell's nylon plates are virtually unbreakable and UL Listed for power and low-voltage with label fields. The ISF Series frames are available 2-, 3-, 4- and 6-port configurations, as well as various colors and connector configurations.



3.5mm Stereo Jacks

Color	3.5mm to Solder	3.5mm to Screw Terminal	3.5mm to Pass-Thru, F/F Coupler	3.5mm to Pass-Thru, Gold F/F Coupler	3.5mm 110 Termination
Black	SF35SJBK	SF35STBK	SF35FFBK	SF35GFFBK	SF35110BK
Office White	SF35SJOW	SF35STOW	SF35FFOW	SF35GFFOW	—
White	SF35SJW	SF35STW	SF35FFW	SF35GFFW	—





SystemOne Cover Finishes

SystemOne Recessed FRPT is available in five architectural finishes of brushed brass plated, satin nickel plated, bronze plated finish, brushed aluminum and black powder coat

The cast aluminum covers feature a low profile design with a thickness of 0.150" which meets ADA requirements.



Large healthcare facilities include auditoriums and conference rooms where medical seminars, continuing education and meetings are held. To better facilitate these meetings, auditoriums and conference rooms must also accommodate the latest AV technology that include display devices, sound systems, video conferencing and more.

Hubbell SystemOne Six and Eight Inch Recessed Fire-Rated Poke-Throughs

- Recessed connections
- Flush, durable low profile cover in brushed brass plated, satin nickel plated, oil rubbed bronze plated, brushed aluminum and black powder coat
- Large variety of subplates to accommodate various power and data configurations



6-Inch Fire-Rated Poke-Throughs

Description	Catalog Number
Pre-Wired FRPT for Data/AV includes: (2) pre-wired 20A receptacles with 18" leads plus 2 decorator openings including 2" EMT and 3/4" EMT, (1) flange and cover assembly	S1R6PTWZxxx
FRPT for Furniture Feed Applications (1) 2" EMT, (1) 3/4" EMT, (1) flange and cover assembly	S1R6PTFFxxx
Through floor fitting including 2" EMT and 3/4" EMT	S1R6PTFIT

8-Inch Fire-Rated Poke-Throughs

Description	Catalog Number
Pre-Wired FRPT for Data/AV includes: (4) pre-wired 20A receptacles with 18" leads plus 3 gangs with 2" EMT for data and AV, (1) flange and cover assembly	S1R8PTZZ3xxx
Pre-Wired FRPT for Power includes: (4) pre-wired 20A receptacles with 18" leads plus 2 gangs with 2" EMT and 1" EMT (1) flange and cover assembly	S1R8PTZZ2xxx
Through floor fitting including 2" EMT for data and AV	S1R8PTFIT3

For finish options, replace xxx: **ALU** (Brushed Aluminum), **BLK** (Black Powder Coat), **BRS** (Brushed Brass, Plated), **BRZ** (Oil Rubbed Bronze, Plated) and **NKL** (Satin Nickel, Plated).



TIA Healthcare Standard TIA-1179 Area: Operations

Communication recommendations for outlet densities

Area	Workstation	LAN Connections
Conference Room	Med. Station	6-14 in each WA

Hubbell Multimedia Connectivity

- Provides for higher capacity application connector count in a smaller footprint
- Allows multiple applications to run over the same horizontal run



HDMI Frame and Jacks

Description	Catalog Number
HDMI decorator frame, 1 port	NS801xx
HDMI decorator frame, 2 port	NS802xx
HXJ Series Jack, 10GbE	HXJ6Axx
HXJ Series Jack, Cat 6	HXJ6xx
HXJ Series Jack, Cat 5e	HXJ5Exx

For color replace xx with: **AL** (Almond), **BK** (Black), **GY** (Gray), **I** (Ivory), **LA** (Light Almond) or **W** (White)

Couplers and Feed Thrus

Description	Catalog Number
Data Coupler, Cat 6	SFC6BK
Data Coupler, Cat 5e	SFC5EBK
USB Coupler, A to B, Blue	SFUSBABB
USB Coupler, A to A, Blue	SFUSBAAB
HDMI Feed Thru Coupler, Black	HDMIC14
HDMI Keystone Feed Thru, Black	SFHC14BK
HDMI Keystone Feed Thru, White	SFHC14W

Hubbell X-End Patch Cords

Description	5 ft.	10 ft.	Application Tail
S-Video & 3.5mm	AVS3505	AVS3510	AVS35T1
S-Video & 2 RCA	AVSRA05	AVSRA10	AVSRAT1
S-Video & 3 RCA	AVSCR05	AVSCR10	AVSCRT1
S-Video, 3 RCA w/ L/R Audio	AVSRC05	AVSRC10	AVSRCT1
3 RCA w/ L/R Audio	AVRC05	AVRC10	AVRCT1
3 RCA Video	AVCR05	AVCR10	AVCRT1
3 RCA w/ S/PDIF	AVCRD05	AVCRD10	AVCRDT1
3 RCA & 3.5mm	AVC3505	AVC3510	AVC35T1
5 RCA w/ L/R Audio	AVCAR05	AVCAR10	AVCART1
5-BNC RGBHV	AVB05	AVB10	AVBT1



Administration



Perfect for areas where lights are often inadvertently left on, Hubbell H-MOSS® Adaptive Technology Ceiling Sensors use microprocessor-based technology that monitors the controlled area and automatically adjusts the sensitivity and timer based on environmental history.

Adaptive Dual Technology Ceiling Sensors

- ATD sensors' superior sensing motion combines excellent minor motion detection of ultrasonic with the long range major motion of passive infrared
- Adaptive technology - "Install and Forget" - features all digital, automatic sensing technology
- CPR version feature photocell for daylight harvesting and relay to interface with auxilliary systems such as HVAC



Description	Coverage	Color	Photocell and Isolated Relay*	Sensor Only
Adaptive Dual Technology ceiling sensor	2000 sq. ft.	White	ATD2000CRP	ATD2000C
	1000 sq. ft.	White	ATD1000CRP	ATD1000C
	500 sq. ft.	White	ATD500CRP	ATD500C
Control unit; 120/277V AC, 50/60 Hz; for use with ceiling sensors				CU300A

*CPR Version version feature photocell for daylight harvesting and relay to interface with auxilliary systems such as HVAC

Pre-Wired Work Surface Boxes

- Convenient and attractive method for work surface power and data connections
- When not in use, services are concealed by flipping the unit down



Description	Color	Catalog Number
Square Lift-Up Style - (2) pre-wired 15A outlets with 6-ft. power cord; 1-unit opening for Hubbell iSTATION modules; 5.75"L x 5.39"W x 4.25"H	Black	WSBC21UBK
	Silver	WSBC21USV
Square Mini Lift-Up Style - (1) pre-wired 15A outlet w 9-ft. power cord; (1) RJ-45 jack installed with 6-ft. patch cord; 3.7"L x 3.7"W x 2.93"H	Black	WSBA11BK
	Brushed Stainless Steel	WSBA11BSS
Square Mini Lift-Up Style - (2) pre-wired 15A outlets with 9-ft. power cord (power only); 3.7"L x 3.7"W x 2.93"H	Black	WSBA2BK
	Brushed Stainless Steel	WSBA2BSS



Hubbell Surge Protective Devices (SPD)

A good-better-best approach to surge protection levels allows customers to choose the proper protection level for their application.



Surge strips are available in various models from strips with USB ports, energy savings surge strips to specialty applications requiring telephone line, CATV and satellite protection.

15 and 20 Amp, specification and hospital grade, Hubbell's surge receptacle offering include 4-Plex, standard duplex and SNAPConnect® versions.

Hubbell iSTATION Furniture Plates

- Integrate seamlessly with a variety of office furniture systems
- Made of durable high-impact thermoplastic housing with openings to fit any keystone data jack and adequate labeling space for easy identification



Description	Color	2-Port	4-Port (Stacked 2x2)	4-Port (In line)
Furniture Plates (Steelcase®, Haworth®, HON®, Knoll®, etc.) Opening Size: 2.71" x 1.38"	Black	SFF3GBK	SFFGBK	SFGRFBK
	Office White	SFF3GOW	SFFGOW	SFGRFOW
	White	SFF3GW	SFFGW	SFGRFW

Patch Cords

- Snagless design
- Cat 6A sled technology improves crosstalk



Length	Category 6A		Category 6		Category 5e	
	Black	Blue	Black	Blue	Black	Blue
1 ft.	HC6ABK01	HC6AB01	HC6BK01	HC6B01	HC5EBK01	HC5EB01
3 ft.	HC6ABK03	HC6AB03	HC6BK03	HC6B03	HC5EBK03	HC5EB03
5 ft.	HC6ABK05	HC6AB05	HC6BK05	HC6B05	HC5EBK05	HC5EB05
10 ft.	HC6ABK10	HC6AB10	HC6BK10	HC6B10	HC5EBK10	HC5EB10
20 ft.	HC6ABK20	HC6AB20	HC6BK20	HC6B20	HC5EBK20	HC5EB20

Steelcase® is a registered trademark of Steelcase, Inc. Haworth® is a registered trademark of Haworth, Inc. HON® is a registered trademark of The HON Company. Knoll® is a registered trademark of Knoll, Inc.



TIA Healthcare Standard TIA-1179
Area: **Operations**
Communication recommendations for outlet densities

Area	Workstation	LAN Connections
Administration	Med. Station	6-14 in each WA
General Office	Low Station	2-6 in each WA





Common Areas



Tamper-Resistant
The NEC® Article 517-18 (c) requires the use of tamper-resistant receptacles in common areas where children are present, as well as all pediatric areas. Hubbell offers the industry's best-in-class hospital grade tamper-resistant receptacle along with a line of GFCI and specification grade devices that include tamper resistant shutters designed for common areas. Hubbell tamper-resistant receptacles restrict access of single-pronged items like paper clips, pens or keys.



Tamper-Resistant Hospital Grade Receptacles

- Deep face design delivers increased impact resistance
- Wire leads for fast installation and no exposed metal
- Integral ID marking surface



Description	Rating	Color	Catalog Number
HBL Extra Heavy Duty Tamper-Resistant Receptacles	15A 125V	Black	HBL8200SGIA
		Gray	HBL8200SGRA
		Ivory	HBL8200SGWA
	20A 125V	Black	HBL8300SGIA
		Gray	HBL8300SGRA
		Ivory	HBL8300SGWA

Description	Rating	Color	Catalog Number
Hubbell-PRO Tamper-Resistant Receptacles	15A 125V	Black	8200IVTR
		Gray	8200REDTR
		Ivory	8200WTR
	20A 125V	Black	8300IVTR
		Gray	8300REDTR
		Ivory	8300WTR

USB Charging Receptacle and 4 Port Outlet Charger

- Green LED indicator to show USB power available
- Four USB ports 5 Amp, 5V DC, Type A, class 2.0



20A 125V USB Charging Receptacle



Description	Color	Catalog Number
Two USB ports 3 Amp, 5V DC, Type A, class 2.0	Black	USB20X2BK
	Brown	USB20X2
Tamper-Resistant Style Line® decorator duplex	Gray	USB20X2GY
	Ivory	USB20X2I
	Lt. Almond	USB20X2LA
	Red	USB20X2R
	White	USB20X2W

USB Charger 4 Port Outlet

Description	Color	Catalog Number
Four USB Type A, class 2.0 ports, 5 Amp, 5 Volt DC, Style Line® decorator	Brown	USB4
	Black	USB4BK
	Gray	USB4GY
	Ivory	USB4I
	Light Almond	USB4LA
	White	USB4W



TIA Healthcare Standard TIA-1179 Area: **Diagnostic and Treatment**
Communication recommendations for outlet densities

Area	Workstation	LAN Connections
Family Lounge	Low Station	2 – 6 in each WA
Waiting Room	Low Station	2 – 6 in each WA
Consultation	Low Station	2 – 6 in each WA

Wireless Access Point Ceiling Box

- Locked and secure for remote locations
- Flexible mounting options
- Ceiling and wall mount enclosures optimize space



Description	Mounting Plate (HxW)	External Dimensions (HxWxD)	Door Weight Capacity	Total Capacity	Cable Entry	Catalog Number
Universal WAP enclosure	9.7" x 5.25"	4" x 10" x 12.7"	15 lb.	20 lb.	6.5" x 1.2"	WBC1
Cisco® Aironet® 1200 series		10" x 10.5" x 13.2"	15 lb.	20 lb.	6.5" x 1.2"	WBC12

AV In-Wall Enclosure (FPTV)

- Deep face design delivers increased impact resistance
- Wire leads for fast installation and no exposed metal
- ID marking surface provides quick sure circuit identification



Description	Catalog No.	Description	Catalog No.
2-Gang In-Wall Enclosure, White	NSAV62M	Standard Power Kit, White	NSOKP
Steel Cover for NSAV6, White	NSAV6C	Surge Protected Power Kit, Blue	NSOKPS



Restrooms

With a restroom in every patient room and throughout staff and public areas, hospitals and healthcare facilities can contain hundreds of restrooms. Required by code, receptacles in any wet area must be a ground fault circuit interrupter. Many healthcare restrooms require hospital grade GFCIs while others can use commercial-grade GFCIs.

Hospital Grade GFCI Tamper-Resistant Weather Resistant Receptacles

- Ground fault indicator flashes red when device has lost capability to provide protection
- Test button functionally tests both electronic components and trip mechanism
- No power at device face if reverse wired



		AUTOGUARD® Self Test	Circuit Guard®	SNAPConnect® GFCI*	Circuit Guard®
	15A 125V	Ivory	GFR8200HITR	GFTR8200SNAPINA	GFR8200HILA
		Red	GFR8200HRTR	GFTR8200SNAPRNA	GFR8200HRLA
		White	GFR8200HWTR	GFTR8200SNAPWNA	GFR8200HWLA
	20A 125V	Ivory	GFR8300HITR	GFTR8300SNAPINA	GFR8300HILA
		Red	GFR8300HRTR	GFTR8300SNAPRNA	GFR8300HRLA
		White	GFR8300HWTR	GFTR8300SNAPWNA	GFR8300HWLA

Description	Wire Type	General Use	Assembled in USA
SNAPConnect® Right Angle Pigtailed Connector - 600V	Solid	SNAP1RA	SNAP1RNA
Clear right angle terminal with 6 inch leads	Stranded	SNAP2RA	SNAP2RNA
#12 AWG THHN/THWN-2; Polycarbonate housing material			
SNAPConnect GFCI must use a SNAPConnect Pigtailed connector.			



GFCI Safety Code

The combination of GFCI protection and tamper-resistant safety provides an ideal “one-stop” Hubbell solution. Hubbell tamper-resistant GFCI devices also include a weather resistant rating per NEC® 406.9, providing UV and corrosion resistance for harsh, damp applications.

While GFCIs protect people in bathrooms, scrub rooms, kitchenettes and other potentially wet locations throughout healthcare facilities, they should not be used in critical care patient areas or for electrical life support equipment in ICUs and operating rooms because of the possibility of power interruption.

Ultrasonic Adaptive Technology Occupancy Sensors

- Provides superior minor motion sensitivity, even in stalls
- Automatically adjusts sensor settings for optimum performance
- Use optional isolated relay to integrate with building automation and HVAC systems



Ceiling Sensor		
Description	Color	Catalog No.
Ceiling sensor 2000 sq. ft.	White	ATU2000C
Control unit; 120/277V AC, 50/60 Hz for use with ceiling sensors		CU300A

Wall Switch		
Description	Color	Catalog No.
Wall switch w/o button, 400 sq. ft.	Ivory White	AU127711N AU1277W1N

Wireless Sensors

- Eliminates need to run extra wires
- Supports highly reconfigured spaces
- Helps manage energy consumption



Description	Color	Catalog Number
Ceiling mount 360° - 324-676 ft²	White	WLP450C
Wall mount 180° - 3000 ft²	White	WLP3000W
Corner mount - 90° - 2500 ft²	White	WLP2500W

Description	Color	Catalog Number
8A Lighting, 3A Fan (1/10 HP motor, 120V only), Spec Grade Electronic Switch 120-277V, No Neutral Wire Required	White	WLS1278W
	Ivory	WLS1278I

Description	Catalog Number
Wireless load control unit with isolated relay	WLC316R
Compatible Transmitters: WLP series and WLDH sensors or any Lutron Clear Connect Enabled Sensor	



Wireless Sensors

There are many retrofit applications where running the extra wiring for traditional occupancy sensors is difficult or impossible. This is where Hubbell's WL-Series Wireless Controls shine by eliminating sensor wiring. Deploy Hubbell's popular wired controls where you can and then utilize WL-Series Controls in the areas that have hard ceilings, asbestos, or poor switch locations.

NEC® is a registered trademark of the National Fire Protection Association (NFPA).





Data Centers



Data Center Design

A properly designed infrastructure will maintain network up-time and security, provide operational efficiency, support future technology and sustain regulatory changes. Data Center Infrastructure Management (DCIM) is the integration of information technology and facility management disciplines to centralize monitoring, management and capacity planning of a data center's critical systems.

Infrastructure design decisions can affect long-term reliability and total cost of ownership. Designing simple features into the infrastructure will dramatically improve data center performance parameters such as: Air Flow, Response Time, Administration, Space Utilization, Security and Aesthetics.



Cost Impact of Downtime

Studies show that losses from downtime can run into the millions of dollars. More than 50% of all data center infrastructure failures result from improper design, maintenance or administration activities⁽¹⁾. The infrastructure must enable IT managers to deploy equipment, complete reconfigurations, and respond to maintenance issues as quickly as possible.

⁽¹⁾ "Site Uptime® Procedures and Guidelines for Safely Performing Work in an Active Data Center", CompuSite Engineering, Inc. and the Uptime Institute (2007).

Data centers are the very core of modern healthcare facilities, supporting all the applications needed to maintain daily communications, electronic health records, and critical storage and transmission of medical information. Data centers also must support all satellite operations within the healthcare network. Healthcare facilities need a data center solution that can address both power and data while supporting sustainability through energy savings, space efficiency, reliability and uptime.

XXL Series Vertical Organizers

- Cabinets, racks and cable management for efficient cooling and space utilization
- Fiber and copper connections, assemblies, and patch panels

Door Insert	Channel Depth	6" Wide	10" Wide	15" Wide
Silver	14 1/8"	XS0610	XS1010	XS1510
Silver	18 7/8"	XS0615	XS1515	XS1515
Black	14 1/8"	XS0610BK	XS1010BK	XS1510BK
Black	18 7/8"	XS0615BK	XS1515BK	XS1515BK

Channel Depth does not include rear cable organizer. Rear cable organizer depth is 7 3/4"



BIDnet

- Hubbell BIDnet™ pre-terminated copper trunk assemblies are factory tested and terminated for maximum performance and reduced installation time

All BIDnet pre-terminated cable assemblies are made-to-order items. Please call out inside sales team at (800) 626-0005 for lead-time and availability. Jack to Open, Jack to Jack and Jack to Plug



Full Size Server and Network Cabinets

- Large open base for cable entry and exit
- Perforated front and rear doors provide enhanced airflow,
- 180 degree door swing provides complete equipment access

H2 Series Full Size Network Cabinet

Height	Depth	Width	Color	Rack Units	Standard w/sides	Standard w/o sides
84"	36"	30"	Black	45	H2N8436	H2N8436E
84"	32"	30"	Black	45	H2N8432	H2N8432E
80"	36"	30"	Black	43	H2N8036	H2N8036E
80"	32"	30"	Black	43	H2N8032	H2N8032E

H2 Series Full Size Server Cabinet

Height	Depth	Width	Color	Rack Units	Standard w/sides	Standard w/o sides
80"	42"	24"	Black	43	H2S8042	H2S8042E



Patch Cords

- Snagless design
- Ascent sled technology improves crosstalk providing increased performance

Length	Category 6A		Category 6		Category 5e	
	Black	Blue	Black	Blue	Black	Blue
1 ft.	HC6ABK01	HC6AB01	HC6BK01	HC6B01	HC5EBK01	HC5EB01
3 ft.	HC6ABK03	HC6AB03	HC6BK03	HC6B03	HC5EBK03	HC5EB03
5 ft.	HC6ABK05	HC6AB05	HC6BK05	HC6B05	HC5EBK05	HC5EB05
10 ft.	HC6ABK10	HC6AB10	HC6BK10	HC6B10	HC5EBK10	HC5EB10
20 ft.	HC6ABK20	HC6AB20	HC6BK20	HC6B20	HC5EBK20	HC5EB20





Data Centers

Hubbell OptiChannel Rack Enclosures

- Rack mount enclosure enhance the management capabilities of high-density fiber optic connections at the interconnect or cross-connect
- Features a one-piece removable cover and magnetic door
- Integrate seamlessly with a wide range of panel and cassette options and are available in 1 to 4U sizes to house anywhere from 72 to 360 LC fiber ports



Description	Rack Units	Dimensions Inches (mm)			Max LC Port Capacity	Color	Catalog Number
		Height	Width	Depth			
High Density 144 Port 1U Enclosures	1	1.75" (44)	19" (483)	17" (432)	144	Black	FCRHD1UBK
	1	1.75" (44)	19" (483)	17" (432)	144	Gray	FCRHD1UGY

Description	Rack Units	Dimensions Inches (mm)			FSP Panel Capacity	Splice Tray Capacity	Max LC Port Capacity	Catalog Number
		Height	Width	Depth				
Enhanced Rack Mounted Enclosures	1	1.75" (44)	17" (432)	17" (432)	3	2	72	FCR1U3SP
	2	3.5" (89)	17" (432)	17" (432)	6	6	144	FCR2U6SP
	3	5.25" (133)	17" (432)	17" (432)	12	12	288	FCR3U12SP
	4	7.00" (178)	17" (432)	17" (432)	15	16	360	FCR4U15SP

BIDnet

- Hubbell BIDnet™ pre-terminated Fiber trunk assemblies are factory tested and terminated for maximum performance and reduced installation time



All BIDnet pre-terminated cable assemblies are made-to-order items. Please call our inside sales team at (800) 626-0005 for lead-time and availability. MTP Fiber Cords, Distribution Trunks and Pigtailed, Mesh Bundle Trunks, 40 Gb/s and 100 Gb/s MTP Fiber Cords, Transition Assemblies, and Distribution Fans-Out Trunks and Pigtailed

Grounding and Bonding

- High strength products for rugged service environments
- Full product offering for all telcom rooms, service entrance facilities and data centers' grounding and bonding requirements



Description	AWG	Single	Double
Compression Lugs - Long barrel with inspection window. Available in 6 AWG up to 750 kcmil	6	HGBL06S	HGBL06D
	4	HGBL04S	HGBL04D
	2	HGBL02S	HGBL02D
	1	HGBL01S	HGBL01D
Description		Copper	Tin Plated Copper
Rack Ground Busbar On-Rail		HBBBHR19KT	HBBBHR19KTTP
Rack Ground Busbar In-Cabinet		HBBBVR36KT	HBBBVR36KTTP
Telecommunications Grounding Busbar		HBBB14210A	HBBB14210ATP
Description		Catalog Number	
Raised Floor Pedestal Clamps			
Parallel or grid; 6 – 4/0 AWG; Stainless Steel 1/2"		HGBGXP1828RF	
Parallel; 4 – 2/0 AWG; Silicon Bronze 9/16"		HGBGP1526G1	
Parallel; 8 – 2 AWG; Silicon Bronze 9/16"		HGBGRF4C3	



Efficiency and Sustainability
Hubbell's iFRAME® cabinets and NEXTFRAME® cable management systems provide for maximum airflow and space utilization supporting efficiency and sustainability in the datacenter.



Grounding and Bonding
The grounding and bonding in the data center is very important when protecting active equipment from dangerous electrical charges. There is a significant need for grounding in this room to prevent equipment failure and increase overall equipment performance.





Ultimate Flexibility

Hubbell raceway accommodates the changing needs of research facilities, medical test labs and pharmacies. Raceway offers the ability to provide standard convenience receptacles and datacomm connections, as well as serve the power requirements of larger equipment. Receptacles or datacomm ports can also be easily added where needed.

Hubbell Aluminum Pre-Wired Raceway

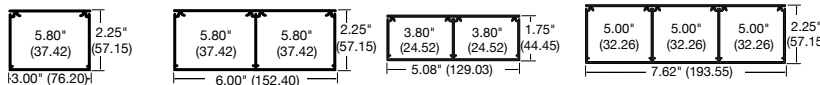


Save time and money, completing the job quicker and on schedule with Hubbell pre-wired raceway. Aluminum raceway resists oxidation, corrosion and fading and is available in single, dual and three channel with a wide selection of fittings and boxes.

Medical labs require an array of power, data and AV configurations and the means to deliver connection points precisely where needed. In this environment they can also be exposed to corrosive chemicals and materials. In addition, labs typically undergo reconfiguration to accommodate changing medical needs, testing and new equipment.

Hubbell Aluminum Raceway

- Resists oxidation, corrosion and fading
- Available in single, dual and three channel with a wide selection of fittings and boxes



Description	HBLALU3800	HBLALU4800	HBLALU5000	HBLALU7620
Base 10ft	HBLALU3800B10	HBLALU4800B10	HBLALU5000B10	HBLALU7620B10
5 ft. cover 1 channel	HBLALUC5	HBLALUC5	HBLALUC57	HBLALUC57
5 ft. cover 2 channel	—	—	HBLALU2C57	HBLALU2C57

Covers

Duplex	HBLALUDR	HBLALUDR	HBLALU57DR	HBLALU57DR
Rectangular	HBLALUG	HBLALUG	HBLALU57G	HBLALU57G
Toggle Switch	HBLALUN	HBLALUN	HBLALU57N	HBLALU57N
Hubbell iStation	HBLALULPB* HBLALULPBA**	HBLALULPB* HBLALULPBA**	HBLALU57LPB**	HBLALU57LPB**

* Use KPIMBZGY KP Plate

** Use IMF1GY or IFPxxGY Series Plates

Fittings

Internal Elbow	HBLALU3817	HBLALU4817	HBLALU5017	HBLALU7617
External Elbow	HBLALU3818	HBLALU4818	HBLALU5018	HBLALU7618
Tee	HBLALU3815	HBLALU4815	HBLALU5015	HBLALU7615
Cover Clip	HBLALU3806	HBLALU4806	HBLALU5006	HBLALU7606

For full offering of Raceways and fittings, please visit our online catalog at hubbell-wiring.com.

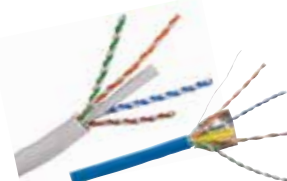


TIA Healthcare Standard TIA-1179
Area: **Diagnostic and Treatment**
Communication recommendations for outlet densities

Area	Workstation	LAN Connections
Laboratory	High Station	>14 in each WA

NEXTSPEED® UTP and FTP Cable

- Designed to operate as a high-performance balanced solution
- Supports the latest ratified industry standards for component compliance
- Typical round design allows for ease of installation



Description	Plenum Spool	Plenum REELEX	Riser Spool	Riser REELEX
UTP Cable, Cat. 6A, 4-Pair	C6ASPxx	C6ASRxx	C6ASRxx	—
10GbE FTP Cable, 4-Pair, 1000' length	C6FTPSPx*	C6FTPSPRxx*	C6FTPSPRxx*	—
UTP Cable, Cat. 6 Enhanced, 4-Pair	C6ESPxx	C6ESRxx	C6ESRxx	—
UTP Cable, Cat. 6, 4-Pair	C6SPxx	C6RPxx	C6SRxx	C6RRxx
Link 6 UTP Cable	—	C6RPEXX	—	C6RRExx
Category 5E UTP Cable, 4-Pair	C5EPSPxx	C5EPRPxx	C5EPSRxx	C5EPRRxx
UTP Cable, Category 5e, 4-Pair	C5ESPxx	C5ERPxx	C5ESRxx	C5ERRxx

For color replace xx with **B** (Blue), **GY** (Gray), **W** (White) and **Y** (Yellow).

*For color replace x with **B** (Blue), **GY** (Gray) and **W** (White)

NEXTSPEED® Ascent Category 6A Shielded Jacks

- Category 6A shielded jacks deliver the ultimate in external noise protection
- Supports power over Ethernet (PoE) and PoE+ applications
- Right-angled IDC contacts allow each twisted pair to be segregated for suppressing pair-to-pair near-end crosstalk



Description	2 Pk	24 Pk
A-Wired	SJ6A2A	SJ6A24A
B-Wired	SJ6A2B	SJ6A24B

Kitchen and Food Services



Hospital, rehabilitation, long term care and hospice facilities include kitchens and food service areas to feed patients, staff and visitors. These food preparation spaces have a wide variety of power requirements. They require modularity to move in various types of appliances as meals and menus change.

Watertight Safety-Shroud® Twist-Lock®

- Maintains UL Type 4X watertight seal when in use and when disconnected with cover closed
- Recessed blades provide protection against bending and breaking
- Neoprene sealing gland and thermoplastic guard assure sealing when fully connected



Watertight Twist-Lock®

- Double insulated elastomeric cover and thermoplastic body for extra safety and water resistance
- Easy-clean body styling
- Closure cap seals out water and dirt when not in use



Watertight Safety

Hubbell offers a variety of watertight electrical connections. Hubbell's Watertight Safety-Shroud® Twist-Lock® devices are another example of Hubbell innovation making devices better. The safety shroud prevents unintentional contact with plug blades as it is connected. Hubbell's pin and sleeve devices offer durable watertight housings and higher amperage configurations up to 200 amps. Hubbell watertight devices are available in straight blade and Twist-Lock® configurations.

NEMA Rating Color Coded by Voltage		Poles/ Wires	Watertight Safety-Shroud® Twist-Lock® Plug	Watertight Safety-Shroud® Twist-Lock® Connector	Watertight Twist-Lock® Plug	Watertight Twist-Lock® Connector
15A 125V		L5-15	2P/3W	—	—	24W47H 25W47H
20A 125V		L5-20	2P/3W	HBL2311SW	HBL2313SW	26W47H 27W47H
20A 250V		L6-20	2P/3W	HBL2321SW	HBL2323SW	26W48H 27W48H
20A 3Ø 250V		L15-20	3P/4W	HBL2421SW	HBL2423SW	26W75H 27W75H
30A 3Ø 250V AC		L15-30	3P/4W	HBL2721SW	HBL2723SW	28W75H 29W75H

HI-IMPACT RJ45 Connectors

- IP67 and IP66 rated for ingress protection against dust and liquids
- Durable, rugged construction for harsh environments
- Supports power over Ethernet (PoE and PoE+)



Description	Catalog Number	Description	Catalog Number
Category 6 Connector (UTP)	HI6	Category 5e Connector	HI5E
Protective Cap	HIC	Inline Coupler, Category 5e	HI5EC

RE-BOX® Remote Equipment Cabinet

- Houses and protects a variety of active and passive network equipment
- Features a modular backboard system with equipment mounting brackets



Pre-Configured Version - Contents: base/rear section with welded 19" brackets for 2 hubs, front door with 2 locks (NSQ tool), a set of 19" extension brackets for 3 additional hubs (RE4xx only) and a set 19" bottom hinge brackets for patch panels

Switch Capacity	Max. Switch Depth	Height	Width	Depth	Color	Light Gray	Black
2U	14" (356)	32" (813)	24.2" (615)	7" (178)	Light gray	RE2	RE2B
5U	14" (356)	32" (813)	24.2" (615)	10" (254)	Light gray	RE4	RE4B
5U	22" (559)	42" (1067)	24.2" (615)	10" (254)	Light gray	RE4X	RE4XB



TIA Healthcare Standard TIA-1179 Area: Operations

Communication recommendations for outlet densities

Area	Workstation	LAN Connections
Food Service	Med. Station	6–14 in each WA
Cafeteria	Low Station	2–6 in each WA
General	Low Station	2–6 in each WA
Storage		





Motor Load Safety

The NEC® requires motor controllers on equipment like HVAC units and compactors to have a disconnect within line of sight (Article 430.102) and allows a controller and disconnect to be the same device (Article 430.109) combining both functions in one device.

Hubbell CIRCUIT-LOCK® devices save space, time and money. The dual rating means installing one device instead of two for reduced complexity and faster deployments to get up and running sooner.

NEC® is a registered trademark of the National Fire Protection Association (NFPA).
Valox® is a registered trademark of SABIC Innovative Plastics acquired from GE.



Certified by NSF

Hubbell's stainless steel disconnect switch has been certified by NSF International for hygiene applications in food and beverage processing. These switched enclosures are designed for harsh environments to withstand exposure to water, chemicals, oils and frequent wash-downs. They feature 304 Series Stainless Steel and are UL listed Type 4X and 12 with a high visibility red handle that can be locked in the "OFF" position for compliance with OSHA lockout/tagout regulations.

Every healthcare facility includes maintenance and plant areas that are similar to an industrial facility. Large equipment like back-up generators, compactors, loading dock equipment, HVAC units and air handlers all need high-capacity, safe and reliable power. Without it, an entire healthcare facility can shut down, compromising patient care.


Twist-Lock® Plugs, Connectors and Receptacles

- Integral dusts shield protects wiring chamber from dust or contaminates
- Tough ribbed nylon housing provides a secure grip with impact and chemical resistance
- Two part cord grip tightens with two screws for maximum strain relief



NEMA Rating	Color Coded by Voltage	Poles/Wires	Plug	Connector	Receptacle	
15A	125V AC	L5-15	2P/3W	HBL4720C	HBL4729C	HBL4710
20A	125V AC	L5-20	2P/3W	HBL2311	HBL2313	HBL2310
20A	250V AC	L6-20	2P/3W	HBL2321	HBL2323	HBL2320
20A 3Ø	250V AC	L15-20	3P/4W	HBL2421	HBL2423	HBL2420
20A 3Ø	480V AC	L16-20	3P/4W	HBL2431	HBL2433	HBL2430
30A 3Ø	250V AC	L15-30	3P/4W	HBL2721	HBL2723	HBL2720
30A 3Ø	480V AC	L16-30	3P/4W	HBL2731	HBL2733	HBL2730

Stainless Steel and Non-Metallic Disconnects

- UL listed as a manual motor controller and is "suitable as a motor disconnect"
-  Certified by NSF for hygiene in Food Processing applications



Description	Non-Metallic	Stainless Steel
30A disconnect switch	HBLDS3	HBLDS3SS
30A disconnect switch with HBLAC1 auxiliary contact	HBLDS3AC	HBLDS3SSAC
60A disconnect switch	HBLDS6	HBLDS6SS
60A disconnect switch with HBLAC1 auxiliary contact	HBLDS6AC	HBLDS6SSAC
100A disconnect switch	HBLDS10	HBLDS10SS
100A disconnect switch with HBLAC1 auxiliary contact	HBLDS10AC	HBLDS10SSAC
Auxiliary contacts, "break after main break" 1 set of n/o & n/c contacts	HBLAC1	HBLAC1
Auxiliary contacts, "break before main break" 1 set of n/o contacts	HBLAC2	HBLAC2

Industrial Power Cord Reels

- Available in 15 and 20A 125V with 45 Foot Length and #12/3 SJO Cable Type



Cord End	NEMA Style	Amps	Weight Lbs. (kg)	Catalog Number
Without cord ends.	5-15R	15	21 (9.5)	HBL45123
HBL5269C connector.	5-15R	15	28 (12.7)	HBL45123C
HBL5369C connector.	5-20R	20	28 (12.7)	HBL45123C20
HBL2313 connector.	L5-20R	20	28 (12.7)	HBL45123TL20
Portable outlet box with (2) gray duplex receptacle.	5-20R	20	29 (13.2)	HBL45123R220
Portable outlet box with (1) ground fault protected gray duplex receptacle.	5-15R	15	29 (13.2)	HBL45123GF15
	5-20R	20	29 (13.2)	HBL45123GF20

Outdoor Areas

From air handling equipment to ambulance bays, healthcare facilities have multiple outdoor areas that require power and cable protection. These spaces must maintain a high level of safety for patients, staff and visitors entering and exiting a healthcare facility.

Mechanical Interlocks

- Interlock eliminates making or breaking the circuit under load for maximum safety
- Non-metallic Valox® housing meets UL50 Type 4X, 12X, and IP67 for harsh environments
- Incorporates a disconnect switch and receptacle in one compact economical unit



Rating	Color	Poles/ Coded by Voltage	Wires	Mechanical Interlock	Mating Plug
20A	120/240V	3P/4W	HBL420MI12W	HBL420P12W	
20A	3Ø 480V	3P/4W	HBL420MI7W	HBL420P7W	
30A	120/240V	3P/4W	HBL430MI12W	HBL430P12W	
30A	3Ø 480V	3P/4W	HBL430MI7W	HBL430P7W	
30A	3Ø 600V	3P/4W	HBL430MI5W	HBL430P5W	
60A	120/240V	3P/4W	HBL460MI12W	HBL460P12W	
60A	3Ø 480V	3P/4W	HBL460MI7W	HBL460P7W	
60A	3Ø 600V	3P/4W	HBL460MI5W	HBL460P5W	
100A	120/240V	3P/4W	HBL4100MI12W	HBL4100P12W	
100A	3Ø 480V	3P/4W	HBL4100MI7W	HBL4100P7W	



Disaster Preparedness Areas

In recent years, disaster preparedness areas have expanded from coping with natural disasters to accidents involving hazardous materials and outside decontamination. Most facilities have developed systems and protocols that enable decontamination of people outside of the building, including outdoor decontamination showers. All of these outdoor areas must be safe and any outdoor equipment must have power that is both reliable and ready in the event of a disaster.

Hose and Cable Protection

- AccessTrak®: expandable five channel system is a modular cable protection for compliance with ADA accessibility guidelines
- TredTrak®: five channel system for pedestrian and light vehicle traffic
- TrukTrak®: two, three and five channel system for heavy trucks and fork lifts



Description	TrukTrak Kit	TredTrak Kit	AccessTrak Kit
Five channel hose and cable protection system	HBLTT5B	HBLTRED5B	HBLAT5KITA

H-MOSS®|MAXX™ OPTIMYZER® Sensors

- Watertight occupancy sensor is ideal for harsh environment
- IP65, NEMA 3R watertight and outdoor rated

Watertight OPTIMYZER®

Description	Voltage	Catalog Number
Pir sensor, relay with photocell	120-347V AC	HMHB21UPCW
Pir sensor, 2 relays with photocell	120-347V AC	HMHB22UPCW
Pir sensor, 1 double pole relay with photocell	208, 240V AC	HMHB23APCW
Pir sensor, 1 double pole relay with photocell	480V AC	HMHB23BPCW

Outdoor Rated Watertight Wall Mount PIR Sensor

Description	Voltage	Catalog Number
IP66, NEMA 4X, heavy duty wall or pendant mount sensor with -40°F to 149°F (-40°C to 65°C) operating	24V DC	AHP1600WRP
PIR sensor, with isolated relay and photocell temperature range and 160° of coverage		

Extreme Temperature PIR Ceiling Sensor

Description	Voltage	Catalog Number
Upgraded ceiling sensor with -40°F to 149°F (-40°C to 65°C) operating temperature range	24V DC	AHP1500CRP
PIR sensor, with isolated relay and photocell Use ACIPE to make NEMA 4X watertight		
NEMA 4X enclosure		ACIPE
Heavy Duty Control Unit for use with AHP1500CRP ceiling sensors	120-277V AC	CU300HD



H-MOSS®|MAXX™

H-MOSS®|MAXX™ products provide users with methods to reduce energy usage in harsh environments. These applications often have lights being left on and ventilation/HVAC systems constantly working. H-MOSS®|MAXX™ products are designed to withstand these challenging environments and provide increased operating efficiency.



Healthcare Application Guide

When Safety, Reliability and Performance Matter

Healthcare eTour



This interactive, virtual tour of a healthcare facility takes visitors through a healthcare setting. As users navigate their way through the virtual hospital, the HealthcareTour demonstrates where and how Hubbell products can be deployed to offer safety, efficiency, performance, and durability solutions in these spaces.

Visit www.hubbell-wiring.com to take the tour.



Critical Care



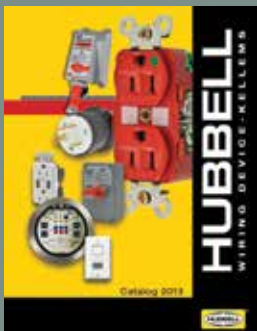
Operating Room



Product Page

Available Literature

Hubbell offers an extensive literature library for product support. Downloadable PDFs are available on line.



Hubbell Wiring Device-Kellems Catalog



SNAPConnect® Devices



Integrating AV Systems



Hubbell Premise Wiring Catalog

