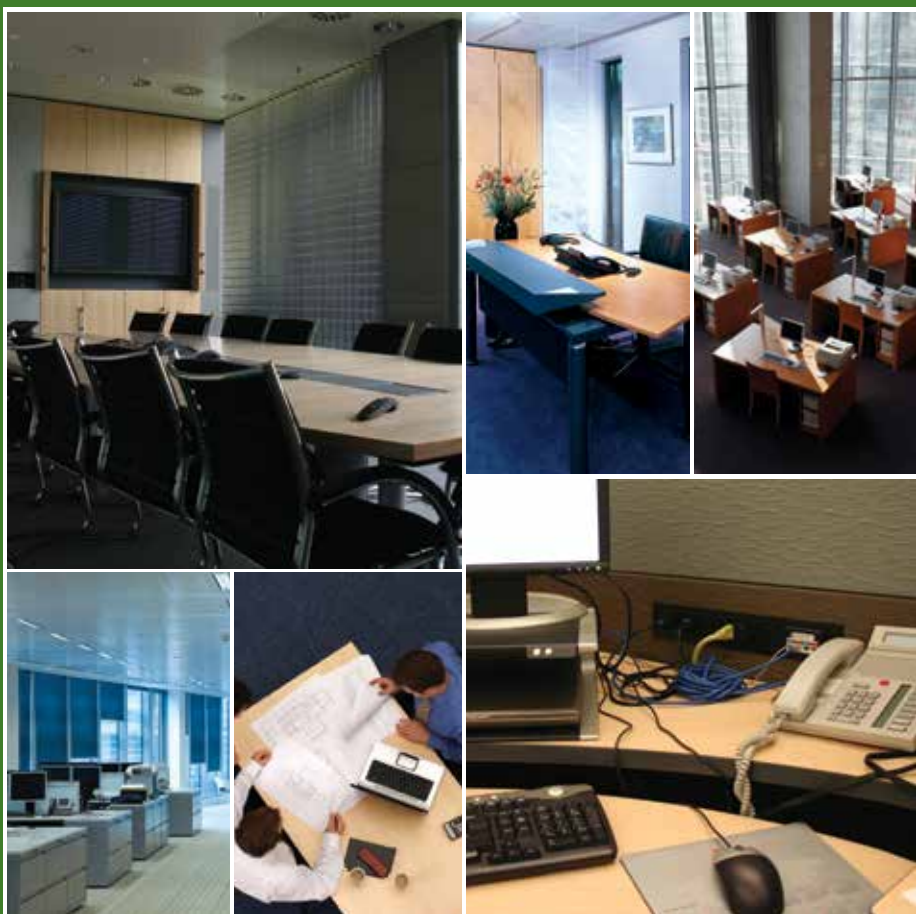




COPPER | Work Area

Hubbell's work area solutions and modular connectivity have many innovative features that integrate into a wide range of Hubbell products—floor boxes, patch panels, conference table boxes, fire-rated poke-throughs and face plates.





COPPER | Work Area

NEXTSPEED® Ascent Category 6A Jacks	B3
NEXTSPEED® Ascent Category 6A and 6 Shielded Jacks	B4
Hubbell Xcelerator Category 6, Category 5e and USOC Jacks.....	B5
Hubbell Xcelerator Jack Accessories	B6
Hubbell Xcelerator Termination Tools	B7
Hubbell iSTATION Rear Loading Faceplates	B9
Hubbell iSTATION Stainless Steel Plates.....	B10
Hubbell iSTATION Decorator Plates and Frames.....	B11
Hubbell iSTATION Secure-IT and Phone Plates	B13
Hubbell iSTATION Furniture Plates and Adapters	B14
Hubbell iSTATION Surface Mount Boxes.....	B15
Hubbell iSTATION AMO and OFPPL Multimedia Boxes.....	B16
Hubbell iSTATION International Frames, Modules and Plates.....	B17
Hubbell iSTATION Modular Adapters.....	B18



Highest Density

Small form factor allows up to 6 jacks in a single gang or 48 jacks in a 1-U panel.

Specifications



- 4.5db min NEXT component margin @ 500MHz over TIA-568-C.2
- 1.5dB min NEXT component margin over ISO
- Third party verification program
- 100% factory tested

Standards

- TIA-568-C.2 Category 6A component
- IEC 60603-7-41 Category 6A component
- Qualified to 150% of IEEE 802.3bt current level
- IEEE 802.3an 10GBASE-T



Strain Relief

Locking IDC stuffer cap secures wires to ensure complete termination retention.



HJ6ABK

NEXTSPEED® Ascent Category 6A Jacks

Color	Single Pack	25-Pack
Black	HJ6ABK	HJ6ABK25
Blue	HJ6AB	HJ6AB25
Electric Ivory	HJ6AEI	HJ6AEI25
Gold	-	HJ6AGL25
Gray	HJ6AGY	HJ6AGY25
Green	HJ6AGN	HJ6AGN25
Office White	HJ6AOW	HJ6AOW25
Orange	HJ6AOR	HJ6AOR25
Purple	-	HJ6AP25
Red	HJ6AR	HJ6AR25
White	HJ6AW	HJ6AW25
Yellow	HJ6AY	HJ6AY25

Note: Also available in 100 packs.
See color chart on page V12.



IDC Lacing

IDC towers have a blade feature to assist pair splitting during termination.



Specifications



- Zinc die-cast construction provides enhanced protection
- Third party verified
- 100% factory tested

Standards

- TIA-568-C.2 Category 6A component
- IEC 60603-7-51 Category 6A component
- Qualified to 150% of IEEE 802.3bt current level
- IEEE 802.3an 10GBASE-T



Termination Cap

Quick lacing termination cap eliminates punching down individual wires increasing termination speed and quality.



Die-Cast Housing

Jack housing made from die cast zinc and hinges open to accept termination cap.



SJ6A

NEXTSPEED® Ascent Category 6A Shielded Jacks

Unit of Measure	Catalog No.
Single pack	SJ6A
24-pack	SJ6A24

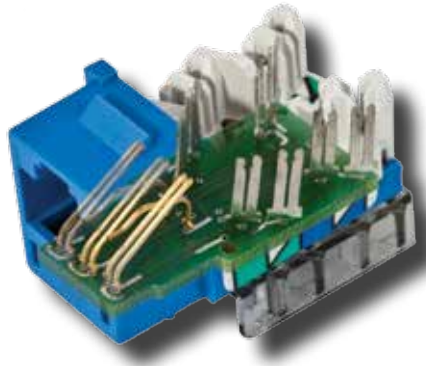
NEXTSPEED® Category 6 Shielded Jacks

Unit of Measure	A-Wired Catalog No.
Single pack	SJ6
24-pack	SJ624



Tool-Less Termination

Jack housing easily closes by hand to terminate all four pairs at once and locks to provide superior strain relief.



Labor Savings
Exclusive 1-Punch Tool, terminates within seconds.



Universal Wiring
Two distinct labels eliminate wiring confusion, T568B or T568A.



IDC Lacing
IDC towers have a blade feature to assist pair splitting during termination.

Specifications



- Mating cycles: 2500
- Manufacturing: 100% factory tested

Standards

- TIA-568-C.2 Category 6 component
- IEC 60603-7-4 Category 6 component
- Qualified to 150% of IEEE 802.3bt current level
- IEEE 802.3an 10GBASE-T



Category 6 Jack
HXJ6GN



Category 5e Jack
HXJ5EB



USOC Jack
HXJUEI

NEXTSPEED® Ascent Category 6 Jacks

Color	Single Pack	25-Pack
Black	HXJ6BK	HXJ6BK25
Blue	HXJ6B	HXJ6B25
Electric Ivory	HXJ6EI	HXJ6EI25
Gold	-	HXJ6GL25
Gray	HXJ6GY	HXJ6GY25
Green	HXJ6GN	HXJ6GN25
Office White	HXJ6OW	HXJ6OW25
Orange	HXJ6OR	HXJ6OR25
Purple	-	HXJ6P25
Red	HXJ6R	HXJ6R25
White	HXJ6W	HXJ6W25
Yellow	HXJ6Y	HXJ6Y25

NEXTSPEED® Category 5e Jacks

Color	Single Pack	25-Pack
Black	HXJ5EBK	HXJ5EBK25
Blue	HXJ5EB	HXJ5EB25
Electric Ivory	HXJ5EEI	HXJ5EEI25
Gold	-	HXJ5EGL25
Gray	HXJ5EGY	HXJ5EGY25
Green	HXJ5EGN	HXJ5EGN25
Office White	HXJ5EOW	HXJ5EOW25
Orange	HXJ5EOR	HXJ5EOR25
Purple	-	HXJ5EP25
Red	HXJ5ER	HXJ5ER25
White	HXJ5EW	HXJ5EW25
Yellow	HXJ5EY	HXJ5EY25

USOC Jacks, RJ-25

Color	Single Pack
Black	HXJUBK
Blue	HXJUB
Electric Ivory	HXJUEI
Gold	-
Gray	HXJUGY
Green	HXJUGN
Office White	HXJUOW
Orange	HXJUOR
Purple	-
Red	HXJUR
White	HXJUW
Yellow	HXJUY

Note: Also available in 100 packs.
See color chart on page V12.



Jack Icons
IR100T, IW100C, IGY100T



Dust Cover
HXJDC25

Jack Icons, XJ and HJ Series

100-Pack, snaps onto jack nose

Color	Blank Catalog No.	Computer Catalog No.	Telephone Catalog No.
Black	IBK100	IBK100C	IBK100T
Blue	IB100	IB100C	IB100T
Brown	IBN100	IBN100C	IBN100T
Electric Ivory	IEI100	IEI100C	IEI100T
Gray	IGY100	IGY100C	IGY100T
Green	IGN100	IGN100C	IGN100T
Orange	IOR100	IOR100C	IOR100T
Purple	IP100	IP100C	IP100T
Red	IR100	IR100C	IR100T
White	IW100	IW100C	IW100T
Yellow	IY100	IY100C	IY100T

Note: Cannot be used with SJ jack series.
Custom Icon numbering and labeling available. Contact Customer Service for details.

SecureIT™ RJ-45 Port Blocker

Description	Catalog No.
Locking RJ-45 port blocker	RJ45PB50

Note: Fits any RJ-45 port.

Jack Dust Covers, XJ and HJ Series

Description	Catalog No.
Polypropylene, clear, 25-pack	HXJDC25

Note: Mounts within the icon slots located above the RJ45 opening.
Cannot be used with SJ jack series.

Shielded Jack Dust Covers for NEXTSPEED® SJ Series

100-Pack, snaps onto jack nose

Color	Catalog No.
Black	SJCBK
Blue	SJCB
Gray	SJCGY
Green	SJCGN
Orange	SJCOR
Red	SJCR
White	SJCW
Yellow	SJCY

Note: See color chart on page V12.



1-Punch Termination Tools
TX4P, TPDH



Termination Puck
HXTP25



6-110, 4-Pair, Cat 6
Termination Tool
6110MPPDT



1-Punch 110, 5-Pair, Cat 5/5e
Termination Tool
T5PPD110

1-Punch XJ Termination Tools

Description	Catalog No.
1-punch Ascent tool with head, blades and HXTA termination aid	TX4P6A
1-punch Ascent tool replacement head	TX4P6AH
1-punch Ascent tool replacement blades	TX4P6ABL
1-punch XJ tool with head, blades and HXTA termination aid	TX4P
1-punch XJ replacement head	TX4PH
1-punch XJ replacement blades	TX4PHBL
Punch down tool, 1-pair	TPDH
1-pair 110 blade	TBLH

Note: Hubbell Xcelerator jacks are compatible with Paladin Tools® "Jack Terminator" PA8111 termination tool.

1-Punch Tool for HP Series Patch Panels

Description	Catalog No.
Patch panel tool with head and blades	TX41
Patch panel tool replacement head	TX414

Termination Accessories

Description	Catalog No.
Hand termination aid "Jack Knuckles" Xcelerator/Ascent	HXTA
Snap-X termination puck, 25-pack	HXTP25
Ascent termination puck, 25-pack	HJTP6A25



Features

- Compact size
- High-visibility for quick locating
- Adjusting screw for varied cable diameters so as to not score interior conductor insulation

Specifications

- Strips round Cat 5e and 6 UTP/STP (diameters 0.145" to 0.275")
- Cuts cable up to 0.350"
- Non-metallic body

Communications Cable Stripper/Cutter

Description	Catalog No.
Stripper/cutter	TCS3

Paladin Tools® is a registered trademark of Textron Inc.

Termination Tool, 6-110/4-Pair, Category 6

Seats 6-110/4-pair connecting blocks and terminate/cut UTP cable on 6-110 wiring blocks; cut designation on tool head aids proper orientation before termination

Description	Catalog No.
Termination tool, 4-pair, 6-110	6110MPPDT
Replacement tool head, 6-110	6110MPPDT1

Note: Not compatible with 1-punch tool

1-Punch Termination Tool, 110/5-Pair, Category 5/5e

Seats 110 connecting blocks and terminate/cut UTP cable on 110 wiring blocks; terminates 28-22AWG solid/stranded wire; common handle for 5-pair/110, jack and panel 1-punch

Description	Catalog No.
Punch-down tool, 5-pair head	T5PPD110



1-Pair
Punch-Down Tool
TPDH



1-Pair Punch-Down
Replacement Blade
TBLH



110
Punch-Down Tool
TPD110



110
Replacement Blade
TBL110



66
Replacement Blade
TBL110

1-Pair Punch-Down Tool

Cuts punch time in half by terminating a pair at a time; terminates 28-22AWG solid/stranded wire; adjustable high and low impact settings

Description	Catalog No.
Punch-down tool with blade	TPDH
Replacement blade	TBLH

Punch-Down Tool, 110

Terminates 28-22AWG solid/stranded wire; adjustable high and low impact settings, lanyard holes in handle

Description	Catalog No.
Punch-down tool with 110 blade	TPD110
Replacement 110 blade	TBL110
Replacement 66 blade	TBL66



Features

- Punch-down tool with 110 and 66 blades
- Durable, nylon belt pouch
- Belt pouch fits up to 2½" belt (slide on style)
- Snap-X has removable lanyard

Specifications

- Punch-down tool for 28–22AWG solid or stranded wire
- Twist and lock 110 and 66 blades
- Screwdriver includes #4 and #6 slotted bits, and #2 and #3 Philips bits

Tool Kit, 8-Piece

Includes: (1) punch-down tool with 110 and 66 blade, (1) pair snips, (1) 4-bit screwdriver, (1) UTP/STP cable stripper/cutter, (1) Maglite™, (1) black belt pouch, and (1) Snap-X termination aid

Description	Catalog No.
Tool kit, 8-piece	TK8

Maglite is a trademark of Mag Instruments, Inc.



Specifications

- Fits all Hubbell keystone connections (AV, data and fiber)
- Available in single and double gang
- All IFP plates are supplied with paper labels, clear screw covers and color matched screw covers
- Secure; must remove plate to access connectivity



1-Port
IFP11OW



6-Port
IFP16OW



9-Port
IFP29OW



Angled
AFP14



Blank
NP23I

IFP Faceplates with Label Fields

Color	Single Gang					Double Gang		
	1-Port	2-Port	3-Port	4-Port	6-Port	6-Port	9-Port	12-Port
Black	IFP11BK	IFP12BK	IFP13BK	IFP14BK	IFP16BK	IFP26BK	IFP29BK	IFP212BK
Ivory	IFP11EI	IFP12EI	IFP13EI	IFP14EI	IFP16EI	IFP26EI	IFP29EI	IFP212EI
Gray	IFP11GY	IFP12GY	IFP13GY	IFP14GY	IFP16GY	IFP26GY	IFP29GY	IFP212GY
Office White	IFP11OW	IFP12OW	IFP13OW	IFP14OW	IFP16OW	IFP26OW	IFP29OW	IFP212OW
White	IFP11W	IFP12W	IFP13W	IFP14W	IFP16W	IFP26W	IFP29W	IFP212W

NS Faceplates without Label Fields

Color	Single Gang					Double Gang	
	1-Port	2-Port	3-Port	4-Port	6-Port	4-Port	6-Port
Black	NSP11BK	NSP12BK	NSP13BK	NSP14BK	NSP16BK	NSP24BK	NSP26BK
Gray	NSP11GY	NSP12GY	NSP13GY	NSP14GY	NSP16GY	NSP24GY	NSP26GY
Ivory	NSP11I	NSP12I	NSP13I	NSP14I	NSP16I	NSP24I	NSP26I
Light Almond	NSP11LA	NSP12LA	NSP13LA	NSP14LA	NSP16LA	NSP24LA	NSP26LA
White	NSP11W	NSP12W	NSP13W	NSP14W	NSP16W	NSP24W	NSP26W

NS Faceplates, Midsize without Label Fields

Color	Single Gang				
	1-Port	2-Port	3-Port	4-Port	6-Port
Black	NSP101BK	NSP102BK	NSP103BK	NSP104BK	NSP106BK
Gray	NSP101GY	NSP102GY	NSP103GY	NSP104GY	NSP106GY
Ivory	NSP101I	NSP102I	NSP103I	NSP104I	NSP106I
Light Almond	NSP101LA	NSP102LA	NSP103LA	NSP104LA	NSP106LA
White	NSP101W	NSP102W	NSP103W	NSP104W	NSP106W

Angled Faceplates

Single Gang
4-Port
-
AFP14G
AFP14E
AFP14
AFP14W

Blank Wallplates

Color	Standard				Midsize	
	1-Gang	2-Gang	3-Gang	4-Gang	1-Gang	2-Gang
Black	NP13BK	NP23BK	NP33BK	NP43BK	NPJ13BK	NPJ23BK
Gray	NP13GY	NP23GY	NP33GY	NP43GY	NPJ13GY	NPJ23GY
Ivory	NP13I	NP23I	NP33I	NP43I	NPJ13I	NPJ23I
Light Almond	NP13LA	NP23LA	NP33LA	NP43LA	NPJ13LA	NPJ23LA
White	NP13W	NP23W	NP33W	NP43W	NPJ13W	NPJ23W

Note: Light Almond is the same color as Office White. See color chart on page V12.



Specifications

Keystone:

- Fits all Hubbell keystone connections (AV, data and fiber)

Modular Frames:

- IMSS plates available in 1-, 2-, 3- and 4-gang
- Fits most Hubbell iSTATION modules



1-Port
SSF11



4-Port with Label Fields
SSFL14



12-Port with Label Fields
SSFL212



iSTATION 3-Gang
IMSS3

Stainless Steel Plates, Rear Loading

Single Gang

	1-Port	2-Port	3-Port	4-Port	6-Port
Catalog No.	SSF11	SSF12	SSF13	SSF14	SSF16

Stainless Steel Plates, Rear Loading

Double Gang

	4-Port	6-Port	9-Port	12-Port
Catalog No.	SSF204	SSF206	SSF209	SSF212

Stainless Steel Plates with Label Fields, Rear Loading

Single Gang

	1-Port	2-Port	3-Port	4-Port	6-Port
Catalog No.	SSFL11	SSFL12	SSFL13	SSFL14	SSFL16

Stainless Steel Plates with Label Fields, Rear Loading

Double Gang

	4-Port	6-Port	9-Port	12-Port
Catalog No.	SSFL24	SSFL26	SSFL29	SSFL212

Hubbell iSTATION Stainless Steel Plates, Front Loading

	1-Gang	2-Gang	3-Gang	4-Gang
Catalog No.	IMSS1	IMSS2	IMSS3	IMSS4



Specifications

- IFP126xx is the industry's only decorator plate that is UL Listed for power and low-voltage with label fields
- Integrates with all Hubbell keystone connections (AV, data and fiber)
- ISF frames available in 2-, 3-, 4- and 6-port configurations



Standard
NP262LA



Snap-On
RCW2I



Brass Decorator
SB262



IFP with Label Fields
IFP126AL



Outlet Frame
ISF6BK



Blank Outlet Frame
NS620AL

Decorator Wallplates, Standard, Nylon

Color	1-Gang	2-Gang	3-Gang	4-Gang	5-Gang	6-Gang
Almond	NP26AL	NP262AL	NP263AL	NP264AL	NP265AL	NP266AL
Black	NP26BK	NP262BK	NP263BK	NP264BK	NP265BK	NP266BK
Gray	NP26GY	NP262GY	NP263GY	NP264GY	NP265GY	NP266GY
Ivory	NP26I	NP262I	NP263I	NP264I	NP265I	NP266I
Light Almond	NP26LA	NP262LA	NP263LA	NP264LA	NP265LA	NP266LA
White	NP26W	NP262W	NP263W	NP264W	NP265W	NP266W

Decorator Wallplates, Midsize, Nylon

Color	1-Gang	2-Gang	3-Gang	4-Gang
Almond	NPJ26AL	NPJ262AL	NPJ263AL	NPJ264AL
Black	NPJ26BK	NPJ262BK	NPJ263BK	NPJ264BK
Gray	NPJ26GY	NPJ262GY	NPJ263GY	NPJ264GY
Ivory	NPJ26I	NPJ262I	NPJ263I	NPJ264I
Light Almond	NPJ26LA	NPJ262LA	NPJ263LA	NPJ264LA

Decorator Wallplates, Snap-On

Color	1-Gang	2-Gang	3-Gang	4-Gang	5-Gang	6-Gang
Ivory	RCW1I	RCW2I	RCW3I	RCW4I	RCW5I	RCW6I
Light Almond	RCW1LA	RCW2LA	RCW3LA	RCW4LA	RCW5LA	RCW6LA
White	RCW1W	RCW2W	RCW3W	RCW4W	RCW5W	RCW6W

Decorator Cover Plates

Material	1-Gang	2-Gang
Brass	SB26	SB262
Stainless Steel	SS26	SS262

IFP Decorator Cover Plates with Label Fields

Color	1-Gang
Almond	IFP126AL
Gray	IFP126GY
Office White	IFP126OW
White	IFP126W

Decorator Outlet Frames, Unloaded

Color	1-Port	2-Port	3-Port	4-Port	6-Port	Color	Blank
Almond	–	ISF2AL	ISF3AL	ISF4AL	ISF6AL	Almond	NS620AL
Black	NS611BK	ISF2BK	ISF3BK	ISF4BK	ISF6BK	Black	NS620BK
Brown	NS611	ISF2BN	ISF3BN	ISF4BN	ISF6BN	Brown	–
Ivory	NS611I	ISF2EI	ISF3EI	ISF4EI	ISF6EI	Ivory	NS620I
Gray	NS611GY	ISF2GY	ISF3GY	ISF4GY	ISF6GY	Gray	NS620GY
Light Almond	NS611LA	–	–	–	–	Light Almond	NS620LA
Office White	NS611OW	ISF2OW	ISF3OW	ISF4OW	ISF6OW	White	NS620W
White	NS611W	ISF2W	ISF3W	ISF4W	ISF6W		

Note: Light Almond is the same color as Office White. See color chart on page V12.



Nylon 1-Gang
NP81



Stainless Steel 2-Gang
SS82



IFP with Label Fields
IFP18OW



2-Port 106 Outlet
BR106B



4-Port 106 Outlet
Q106B

Specifications

- IFP18xx is the only duplex plate in the industry that is UL Listed for power and low-voltage with label fields
- Integrates with all Hubbell keystone connections (AV, data and fiber)
- ISF frames available in 2- and 4-port configurations

Duplex Wallplates, Nylon

Standard					Midsize	
Color	1-Gang	2-Gang	3-Gang	4-Gang	1-Gang	2-Gang
Almond	NP8AL	NP82AL	NP83AL	NP84AL	NPJ8AL	NPJ82AL
Black	NP8BK	NP82BK	NP83BK	NP84BK	NPJ8BK	NPJ82BK
Gray	NP8GY	NP82GY	NP83GY	NP84GY	NPJ8GY	NPJ82GY
Ivory	NP8I	NP82I	NP83I	NP84I	NPJ8I	NPJ82I
Light Almond	NP8LA	NP82LA	NP83LA	NP84LA	NPJ8LA	NPJ82LA
White	NP8W	NP82W	NP83W	NP84W	NPJ8W	NPJ82W

Duplex Wallplates, Stainless Steel

Finish	1-Gang	2-Gang
Brass	SB8	SB82
Stainless Steel	SS8	SS82

IFP Duplex Cover Plates with Label Fields

Color	1-Gang
Almond	IFP18AL
Office White	IFP18OW

Duplex 106 Outlet Frames

Color	2-Port	4-Port
Almond	BR106AL	Q106AL
Black	BR106B	Q106B
Ivory	BR106E	Q106E
Gray	BR106G	Q106G
Office White	BR106C	Q106O
White	BR106W	Q106W

Note: Light Almond is the same color as Office White. See color chart on page V12.



Specifications

- The sliding cover provides protection and longer life
- Staggered, angled openings provide proper cable exit and bend radius
- Two methods to secure cover: screw, latch or both
- Indoor or NEMA 3R weather-proof grade



Tamper-Resistant
TPF1OW



TR Cable-Thru
TCP1GY



Weather Proof
TWPF1GY



Box Eliminator
BRBE1



Phone Plate
SP6F



Recessed Phone Plate
SP6R

Secure-IT Plates, Tamper-Resistant

	Face Plate 1-Gang/4-Port	Cable-Thru Plate 1-Gang
Color		
Black	TPF1BK	TPCP1BK
Gray	TPF1GY	TPCP1GY
Office White	TPF1OW	TPCP1OW
White	TPF1W	TPCP1W

Secure-IT Plates, Weather Proof

	Face Plate 1-Gang/4-Port
Color	
Gray	TWPF1GY

Box Eliminator

Description	Catalog No.
Single gang box eliminator used in place of an electrical box. Secures to a drywall opening providing a means to mount a single gang plate.	BRBE1

Stainless Steel Wall Mount Phone Plates, Single Gang

Description	Color	Flush Jack	Recessed Jack
USOC jack, RJ25, 6-position	Gray	SPUF	SPUR
Category 5e jack, RJ45, 8-position	Gray	SP5EF	SP5ER
Category 6 jack, RJ45, 8-position	Gray	SP6F	SP6R
10 Gig jack, RJ45, 8-position	Gray	SP10GF	SP10GR



Specifications

- Work area and individual port identification labeling
- FP plate positions connectivity outside the furniture channel maximizing internal capacity

COPPER | WORK AREA



2-Port
FP2BK



4-Port
FP4BK



4-Port Inline
FP4BBK



Adapter Plate
HMRBBK

Furniture Plates (Steelcase®, Haworth®, HON®, Knoll®, etc.)

Opening size: 2.71" x 1.38"

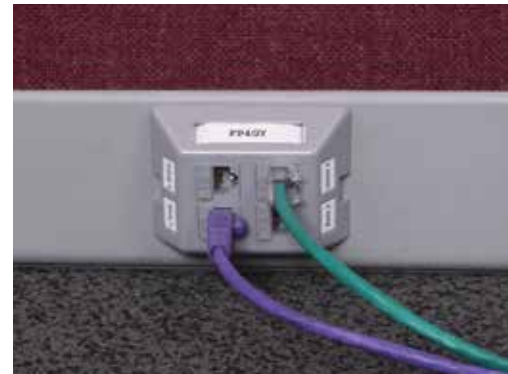
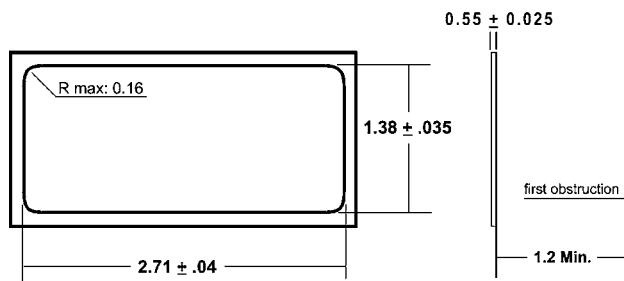
Color	2-Port	4-Port	4-Port Inline
Black	FP2BK	FP4BK	FP4BBK
Gray	FP2GY	FP4GY	FP4BGY

Furniture Reducing Adapter Plate (Herman Miller®)

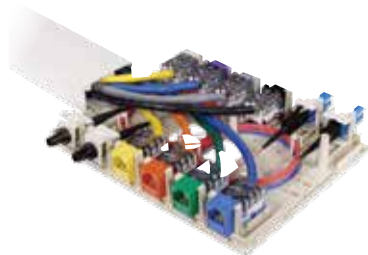
May be used with the FP2 or FP4 series furniture plates only for Herman Miller applications; Opening size: 2.982" x 1.882"

Color	Catalog No.
Black	HMRBBK
Gray	HMRBGY

FP2 and FP4 Opening Size



Steelcase is a registered trademark of Steelcase, Inc. Haworth is a registered trademark of Haworth, Inc. HON is a registered trademark of the HON Company. Knoll is a registered trademark of Knoll, Inc. Herman Miller is a registered trademark of Herman Miller, Inc.



Specifications

- Fiber storage in 4-, 6- and 12-port versions
- 4- and 6-port versions have ratcheting tabs for adjustable furniture mounting
- 1-, 2-, 4-, 6- and 12-port configurations
- Plenum versions available



1-Port
ISB1OW



2-Port
ISB2OW



4-Port
ISB4OW



6-Port
ISB12OW

ISB Surface Mount Boxes

Color	1-Port	2-Port	4-Port	6-Port	12-Port
Black	ISB1BK	ISB2BK	ISB4BK	ISB6BK	ISB12BK
Ivory	ISB1EI	ISB2EI	ISB4EI	ISB6EI	ISB12EI
Gray	ISB1GY	ISB2GY	ISB4GY	ISB6GY	ISB12GY
Office White	ISB1OW	ISB2OW	ISB4OW	ISB6OW	ISB12OW
White	ISB1W	ISB2W	ISB4W	ISB6W	ISB12W

Note: ISB surface mount boxes are not compatible with SJ shielded jacks.

UL Plenum Rated ISB Surface Mount Boxes

Color	1-Port	2-Port
Black	ISB1BKP	ISB2BKP
Ivory	ISB1EIP	ISB2EIP
Gray	ISB1GYP	ISB2GYP
Office White	ISB1OWP	ISB2OWP
White	ISB1WP	ISB2WP

Note: ISB surface mount boxes are not compatible with SJ shielded jacks.



Non-Metallic Raceway Compatibility Chart

Series	PP	PL	PW	PB
ISB1	✓			✓*
ISB2	✓			✓*
ISB4	✓	✓	✓	✓*
ISB6	✓	✓	✓	✓*
ISB12	✓	✓	✓	✓*

*Use PB3REDA transition fitting

- PP1 = PREMISETRAK Latching Raceway
- PL1 = LANTRAK® Latching Raceway
- PW2 = WALLTRAK® Latching Raceway
- PB2 = BASETRAK® Non-Latching Raceway
- PB3 = BASETRAK Non-Latching Raceway
- PS3 = SUPER BASETRAK® Non-Latching Raceway

See section S for Raceway product information.

See color chart on page V12.

COPPER | WORK AREA



Specifications

- Multimedia compatible
- AMO Capacities
 - 12 Snap Fit connectors
 - 12 fibers (ST or SC)
 - 24 fibers (LC quad)
- UL94-V0



AMO Base Unit Housing
AMO



BNC Adapter
AMOBBN10



Dual Jack Adapter
AMOB2J10



SC Duplex Adapter
AMOBSCD



ST-Style Adapter
AMOBST2



OFPPL Base Unit Housing
OFPPL

AMO Base Unit Housing

Office White

Description	Catalog No.
Housing with six (6) bracket locations, unloaded	AMO

AMO Adapter Brackets

Office White

Description	Catalog No.
ST-style adapter, phosphor bronze, 2 included	AMOBST2
Blank adapter, 10-pack	AMOBL10
Single jack adapter, 10-pack	AMOBJ10
Dual jack adapter, 10-pack	AMOB2J10
BNC adapter, 1/2" opening, 10-pack	AMOBBN10
F-style adapter, 3/8" opening, 10-pack	AMOBF10
RCA solder-type adapter, 1/4" opening, 10-pack	AMOBRC10
Blank for SC duplex or RC quad	AMOBSCDBNK

AMO Adapter Brackets, SC and LC

Description	Color	Catalog No.
SC duplex adapter, phosphor bronze	Office White/ Blue	AMOBSCD
LC quad adapter, phosphor bronze, blue	Office White/ Blue	AMOLCQ
Blank for SC duplex or RC quad	Office White	AMOBSCDBNK
SC duplex adapter, zirconia	Aqua	AMOBSCDSAQ
LC quad adapter, zirconia	Aqua	AMOLCQSAQ
	Beige	AMOLCQSBE

See color chart on page V12.

OFPPL Base Unit Housing and Bracket

Description	Catalog No.
Office white housing, cover and mounting accessories	OFPPL
OFP bracket with 2 ST couplers, phosphor bronze	OFPBST2
OFP bracket, blank, 10-pack	OFPBB10

Note: SC duplex and LC quad connectors mount directly to the OFPPL base.

Note: Minimum order quantities apply.
See pages F13–F16 for more Audio/Video connectors and bulk connector options.



Specifications



- Compatible with HJ, XJ and SF style AV and fiber connectors



UK, Shuttered
EM6S



UK, Flat
BPC12



UK, Bevelled
BPS11A



UK, Bevelled
EBM1



French, Dual Module
EM42S

UK-Style Modules

Shuttered, Unloaded 50 x 25mm	Shuttered, Unloaded 37 x 22.5mm (LJ6C)	Angled, Shuttered, Unloaded 50 x 25mm	Angled, Shuttered, Unloaded 37 x 22.5mm (LJ6C)	Blanking Plate 50 x 12.5mm	Blanking Plate 50 x 25mm
EM1S	EM6S	EAM1S	EAM6S	EMB12	EMB25

UK-Style Plates

Single Gang			
	1-Port Plate, Unloaded	2-Port Plate, Unloaded	4-Port Plate
Flat	BPS11	BPS12	-
Bevelled	BPS11A	BPS12A	-
Flat	BPC11	BPC12	BPC14
Angled	BPC11A	BPC12A	-

UK-Style Frames

1-Gang, Bevelled 50 x 50mm	2-Gang, Bevelled 100 x 50mm	1-Gang, 50 x 50mm	2-Gang, 100 x 50mm
EBM1	EBM2	EMBP1	EMBP2

French-Style Modules

Single Module, Unloaded 45 x 45mm	Dual Module, Unloaded 45 x 45mm	Angled, Dual Module, Unloaded 45 x 45mm
EM41S	EM42S	EM42SA

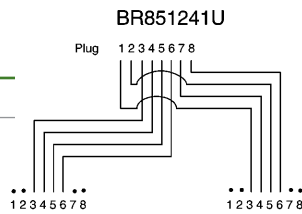


Modular 851 Y adapter series

Splitting Y Adapters

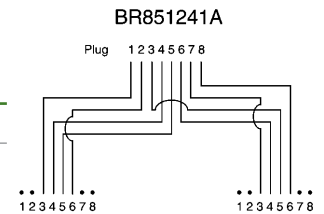
Designed for connecting two pieces of voice, data or ancillary equipment to a USOC, RJ61 8-position jack.

Catalog No. **BR851241U**



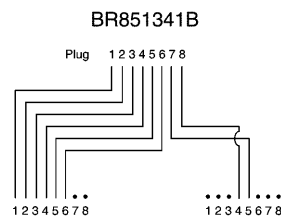
Converts a T568B wired RJ45 jack into two 2-pair jacks. Designed for connecting two pieces of voice, data or ancillary equipment.

Catalog No. **BR851241A**



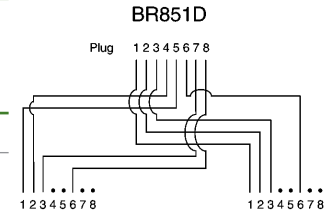
Converts a T568B wired RJ45 jack by splitting Pairs 1, 2, and 3 to first 6 positions of Jack 1, and Pair 4 to positions 4 and 5 of Jack 2.

Catalog No. **BR851341B**



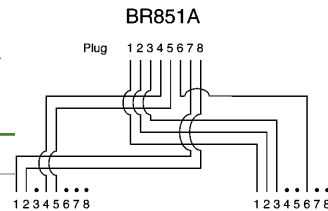
Converts a T568B wired RJ45 jack to (2) 10/100BASE-T wired RJ45 jacks. Pairs 2 and 3 are split to Jack 1, and Pairs 1 and 4 are split to Jack 2.

Catalog No. **BR851D**



Converts a T568B wired RJ45 jack to a voice wired application (Pairs 1 and 4) Jack 1, and a 10/100BASE-T application (Pairs 2 and 3) wired 8-position Jack 2.

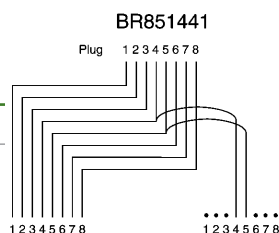
Catalog No. **BR851A**



Bridging Y Adapters

Provides a station solution and an option for a speaker, power failure ringer or an ancillary device requiring the use of Pair 1.

Catalog No. **BR851441**



Provides (2) RJ45 4-pair jacks in a parallel wiring formation, providing two access points to the circuit, adding a common station or in a daisy chain application.

Catalog No. **BR851B**

