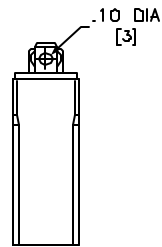


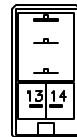
RELAY CONFIGURATION

CODE (1)	INPUT VOLTAGE	VOLTAGE	HORSEPOWER RATING	AMPS	CONTACTS
41	AC 50/60 HZ	120VAC	1/8	10	SILVER
		240VAC	1/3		CADMIUM OXIDE
D41	DC	30VDC	-		

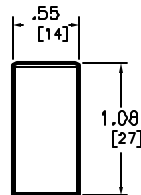
VOLTAGE	50/60HZ CODE (2)	VOLTAGE	DC CODE (2)
24	V14	12	V51
120	V20	24	V53



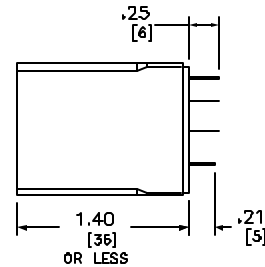
TOP VIEW



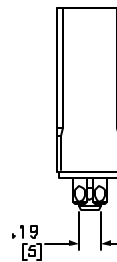
BACK VIEW



FRONT VIEW



RIGHT VIEW



BOTTOM VIEW

CONTACT ARRANGEMENT FOR ALL RELAYS: SPDT

Catalog Number: 8501-RS(1)(2)
 Ratings: SEE CHART
 UL File/CCN: E78301-NLDX2
 CSA File/Class: LR35144-3211-04
 Meets Standards: -
 Weight: -
 Wire Size: -
 Terminal torque: -
 Mounting Hwd.: -

DUAL DIMENSIONS: INCHES
 MILLIMETERS

GENERAL PURPOSE MINIATURE
 PLUG-IN RELAY (14 BLADE)
 8501-RS(1)(2)



DWG# E0704201-01
 NO.