

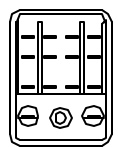


TOP VIEW

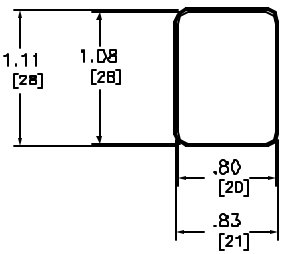
RELAY CONFIGURATION

CODE (1)	INPUT VOLTAGE	VOLTAGE	HORSEPOWER RATING	AMPS	CONTACTS	USAGE
14	AC 50/60 HZ	120VAC	1/10	5	SILVER CADMIUM OXIDE	FOR SWITCHING INDUCTIVE LOADS
D14	DC	28VDC	—			
4	AC 50/60 HZ	120VAC	—	3	FINE SILVER (GOLD FLASHED)	FOR LOW LEVEL SWITCHING
D4	DC	28VDC	—			
24	AC 50/60 HZ	120 VAC	—	1	BIFURCATED CONTACTS	
D24	DC	30 VDC	—			
34	AC 50/60 HZ	120VAC	1/10	5	HERMETICALLY SEALED	CLASS 1 DIVISION 2
D34	DC	28VDC	—			

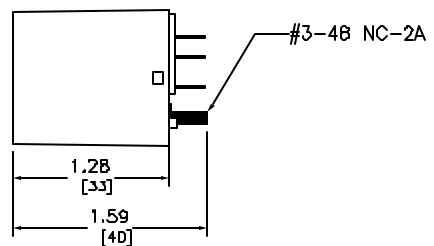
VOLTAGE	AO/60HZ CODE (2)	VOLTAGE	DC CODE (2)
6	V35	6	V50
12	V36	12	V51
24	V14	24	V53
120	V20	48	V56
240	V24	110	V60



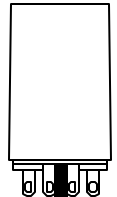
BACK VIEW



FRONT VIEW



RIGHT VIEW



BOTTOM VIEW

CONTACT ARRANGEMENT FOR ALL RELAYS: 4PDT

Catalog Number: 8501-RS(1)(2)
 Ratings: SEE CHART
 UL File/CCN: CCN-E70331-NLDX2
 CSA File/Class: LR15734-3211-04
 Meets Standards: —
 Weight: —
 Wire Size: —
 Terminal torque: —
 Mounting Hwd.: —

DUAL DIMENSIONS: INCHES
 MILLIMETERS

GENERAL PURPOSE MINIATURE
 PLUG-IN RELAY (14 BLADE)
 8501-RS(1)(2)



DWG# E0702901-01
 NO.