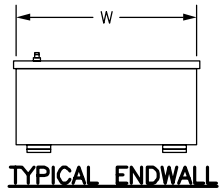
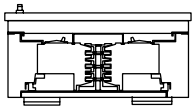
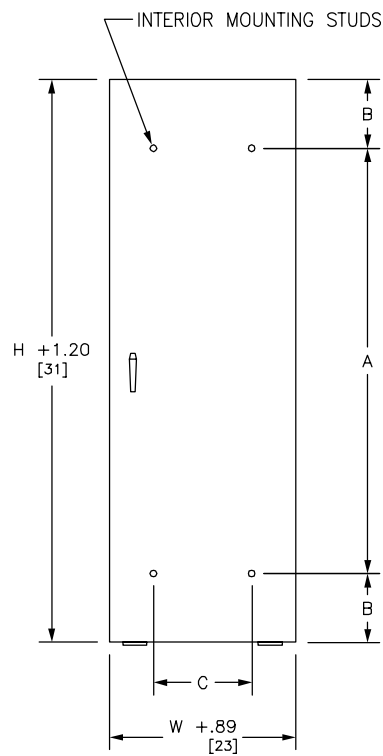
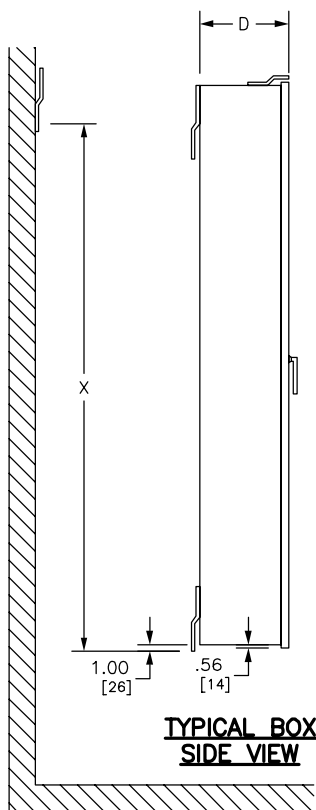


REV	DESCRIPTION	BY	DATE	---	----	---	----
---	----	---	----	---	----	---	----



REFER TO DP CATALOG CLASS 2110 FOR ADDITIONAL INFORMATION

I-LINE PANELBOARDS MEET THE APPLICABLE REQUIREMENTS OF UL AND CSA.

BOX: GRAY BAKED ENAMEL FINISH ELECTRODEPOSITED OVER CLEANED PHOSPHATIZED STEEL. INCLUDES HINGED COVER. MOUNTS TO WALL WITH MOUNTING CHANNEL AND SWINGABLE MOUNTING BRACKET.

LOCK: CHROME-PLATED HANDLE LOCK. NSR-251 KEY CHANGE. NO PROVISIONS FOR PADLOCK.

DUAL DIMENSIONS: INCHES MILLIMETERS

ENCLOSURE CATALOG NUMBER	H		W		D		A		B		C		X	
	IN	MM	IN	MM	IN	MM	IN	MM	IN	MM	IN	MM	IN	MM
HC2652WP	52.00	1321	26.00	660	9.75	248	29.00	737	11.50	292	16.50	419	46.40	1179
HC2665WP	65.00	1651	26.00	660	9.75	248	38.00	965	13.50	343	16.50	419	59.40	1509
HC2674WP	74.00	1880	26.00	660	9.75	248	47.00	1194	13.50	343	16.50	419	68.40	1737
HC2683WP	83.00	2108	26.00	660	9.75	248	56.00	1422	13.50	343	16.50	419	77.40	1966
HC2692WP	92.00	2337	26.00	660	9.75	248	65.00	1651	13.50	343	16.50	419	86.40	2195
HC3248WP	48.00	1219	32.00	813	11.75	298	29.10	739	9.45	240	22.00	559	43.40	1102
HC3264WP	64.00	1626	32.00	813	11.75	298	38.10	968	12.95	329	22.00	559	59.40	1509
HC3273WP	73.00	1854	32.00	813	11.75	298	47.10	1196	12.95	329	22.00	559	68.40	1737
HC3291WP	91.00	2311	32.00	813	11.75	298	65.10	1654	12.95	329	22.00	559	86.40	2195
HC4250WP	50.00	1270	42.00	1067	12.95	329	29.10	739	10.45	265	30.00	762	44.40	1128
HC4259WP	59.00	1499	42.00	1067	12.95	329	38.10	968	10.45	265	30.00	762	53.40	1356
HC4268WP	68.00	1727	42.00	1067	12.95	329	47.10	1196	10.45	265	30.00	762	62.40	1585
HC4286WP	86.00	2184	42.00	1067	12.95	329	65.10	1654	10.45	265	30.00	762	80.40	2042

NOTE: NEMA TYPE 3R/12 ENCLOSURE FOR HCN, HCM, AND HCP I-LINE PANELBOARDS.

JOB NAME: ---	EQUIPMENT DESIGNATION: ---
JOB LOCATION: ---	EQUIPMENT TYPE: I-LINE HCN,HCM,HCP TYPE 3R/12
DRAWN BY: ---	DRAWING TYPE: ---
ENGR: ---	
DATE: JULY 2007	
DRAWING STATUS: ---	DWG# PBA412 PG 01 OF 01 REV ---