

SENTRON, 3LD switch disconnecter, EMERGENCY-STOP switch, 3-pole, Iu:16 A, Operational power / at AC-23 A at 400 V: 7,5 kW, front-mounted, rotary operating mechanism, red/yellow, 4-hole mounting of the handle



| Model | |
|--|--|
| product brandname | SENTRON |
| Product designation | 3LD switch disconnecter |
| Design of the product | EMERGENCY-STOP switch |
| Display version / for switch position indicator manual operation | 1 ON - 0 OFF |
| Design of the operating mechanism | Short rotary knob |
| Design of handle | rotary operating mechanism, red/yellow |
| Type of the driving mechanism / motor drive | No |
| General technical data | |
| Number of poles | 3 |
| Type of device | fixed mounting |
| Type of switch | front mounted |
| Size of switch disconnecter | 1 |
| Operating frequency / maximum | 50 1/h |
| Voltage | |
| Insulation voltage / rated value | 690 V |
| Surge voltage resistance / rated value | 6 kV |

| Protection class | |
|--|--------|
| Protection class IP | IP65 |
| Protection class IP / on the front | IP65 |
| Dissipation | |
| Power loss [W] | 0.5 W |
| <ul style="list-style-type: none"> • for rated value of the current / at AC / in hot operating state / per pole | |
| Electricity | |
| Current / at AC / rated value | 16 A |
| Continuous current / rated value | 16 A |
| Short-time current resistance (I _{cw}) / at 690 V / limited to 1 s / rated value | 340 A |
| Main circuit | |
| Operating frequency | |
| <ul style="list-style-type: none"> • initial value | 50 Hz |
| <ul style="list-style-type: none"> • Full-scale value | 60 Hz |
| Operating power | |
| <ul style="list-style-type: none"> • at AC-23 A / at 400 V / rated value | 7.5 kW |
| <ul style="list-style-type: none"> • at AC-23 A / at 690 V / rated value | 7.5 kW |
| <ul style="list-style-type: none"> • at AC-3 / at 400 V / rated value | 5.5 kW |
| <ul style="list-style-type: none"> • at AC-3 / at 690 V / rated value | 5.5 kW |
| Operating voltage | |
| <ul style="list-style-type: none"> • at AC / at 50/60 Hz / rated value | 690 V |
| Auxiliary circuit | |
| Operating voltage / of auxiliary contacts / at AC / maximum | 500 V |
| Continuous current / of the auxiliary contact / rated value | 10 A |
| Insulation voltage / of the auxiliary switch / rated value | 500 V |
| Suitability | |
| Suitability for use | |
| <ul style="list-style-type: none"> • Main switch | Yes |
| <ul style="list-style-type: none"> • switch disconnecter | Yes |
| <ul style="list-style-type: none"> • EMERGENCY OFF switch | Yes |
| <ul style="list-style-type: none"> • safety switch | Yes |
| <ul style="list-style-type: none"> • maintenance/repair switch | Yes |
| Product details | |
| Product feature / interlock | Yes |
| Product extension / optional | |
| <ul style="list-style-type: none"> • motor drive | No |

- Voltage trigger

No

Connections

Type of electrical connection

- for main current circuit
- for auxiliary contacts

Box terminal
connection terminals

Requirements

Design of the fuse link

- for short-circuit protection of the main circuit / required
- for short-circuit protection of the auxiliary switch / required

fuse gL/gG: 20 A

fuse gL/gG: 10 A

Mechanical Design

Height

84 mm

Width

67 mm

Depth

92.5 mm

Mounting type

Built-in unit fixed-mounted version

Mounting type

- front mounting with 4-hole attachment
- front mounting with central attachment
- rail mounting

Yes

No

No

Net weight

203 g

Environmental conditions

Ambient temperature

- during operation / minimum
- during operation / maximum

-25 °C

55 °C

Certificates

Equipment marking

- acc. to DIN EN 61346-2
- acc. to DIN EN 81346-2

S

SF

| | |
|--------------------------|---------------------------|
| General Product Approval | Declaration of Conformity |
|--------------------------|---------------------------|



CCC



CSA



UL



VDE

[Miscellaneous](#)



EG-Konf.

| | | | |
|-------------------|-------------------|-------|--|
| Test Certificates | Shipping Approval | other | |
|-------------------|-------------------|-------|--|

[Special Test Certificate](#)



LRS

[Miscellaneous](#)

[Environmental Confirmations](#)

Further information

Information- and Downloadcenter (Catalogs, Brochures,...)

<http://www.siemens.com/lowvoltage/catalogs>

Industry Mall (Online ordering system)

<https://mall.industry.siemens.com/mall/en/en/Catalog/product?mfb=3LD2003-0TK53>

Service&Support (Manuals, Certificates, Characteristics, FAQs,...)

<https://support.industry.siemens.com/cs/ww/en/ps/3LD2003-0TK53>

Image database (product images, 2D dimension drawings, 3D models, device circuit diagrams, ...)

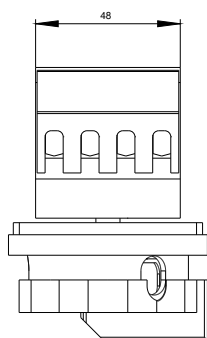
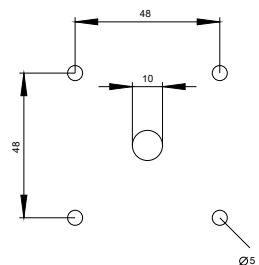
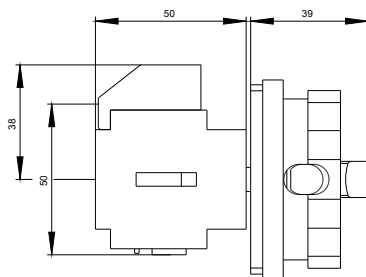
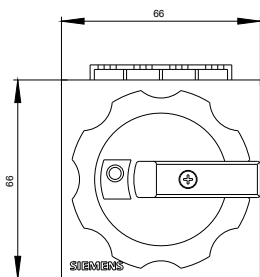
http://www.automation.siemens.com/bilddb/cax_en.aspx?mfb=3LD2003-0TK53

CAX-Online-Generator

<http://www.siemens.com/cax>

Tender specifications

<http://www.siemens.com/specifications>



-Q1



