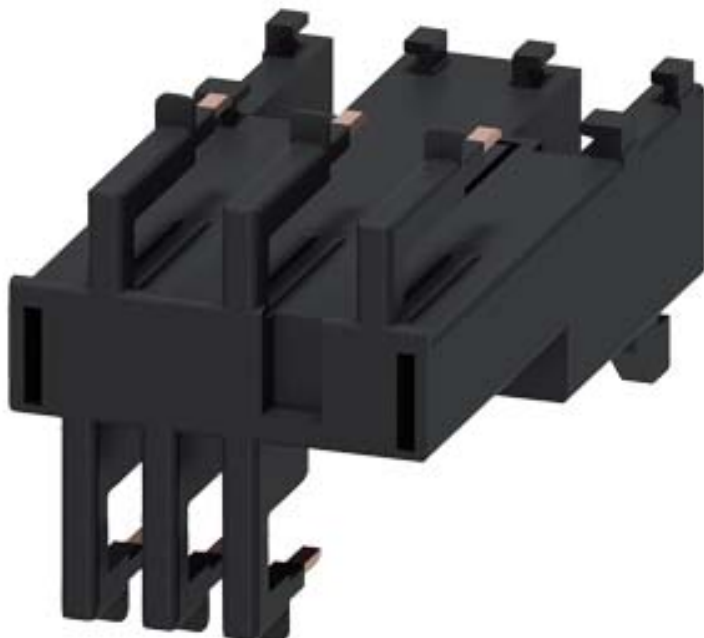


Link module Electrical and mechanical for 3RV2011 and 3RT201. Spring-type terminal





#### General technical data

product brandname		SIRIUS
Product designation		link module
Design of the product		actuating voltage contactor: AC and DC
Size of the circuit-breaker		S00
Size of contactor		S00

#### Installation/ mounting/ dimensions

Mounting type		clip-on
---------------	--	---------

#### Certificates/approvals

General Product Approval			Declaration of Conformity	Test Certificates	
 CSA	 UL		 EG-Konf.	<a href="#">Type Test Certificates/Test Report</a>	<a href="#">Special Test Certificate</a>

Shipping Approval					other
 ABS	 BUREAU VERITAS	 GL	 PRS	 RINA	<a href="#">Confirmation</a>

### Further information

**Information- and Downloadcenter (Catalogs, Brochures,...)**

<http://www.siemens.com/industrial-controls/catalogs>

**Industry Mall (Online ordering system)**

<https://mall.industry.siemens.com/mall/en/en/Catalog/product?mlfb=3RA2911-2AA00>

**Cax online generator**

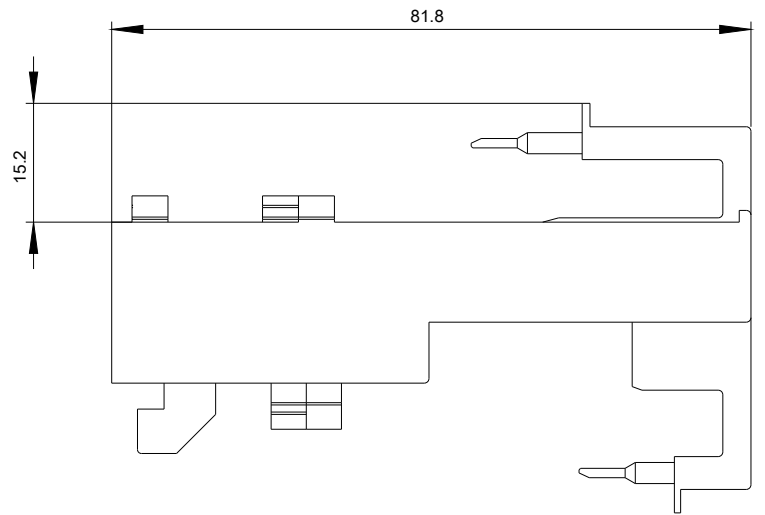
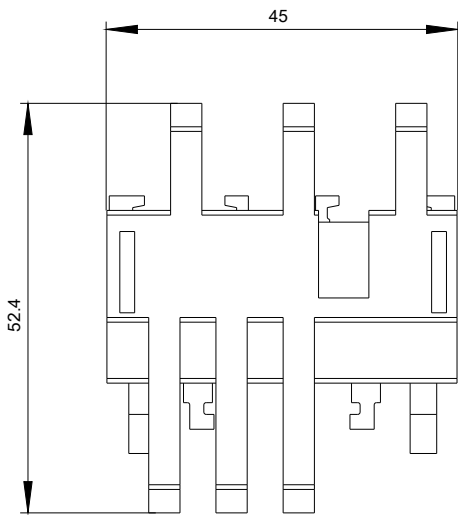
<http://support.automation.siemens.com/WW/CAXorder/default.aspx?lang=en&mlfb=3RA2911-2AA00>

**Service&Support (Manuals, Certificates, Characteristics, FAQs,...)**

<https://support.industry.siemens.com/cs/ww/en/ps/3RA2911-2AA00>

**Image database (product images, 2D dimension drawings, 3D models, device circuit diagrams, EPLAN macros, ...)**

[http://www.automation.siemens.com/bilddb/cax\\_de.aspx?mlfb=3RA2911-2AA00&lang=en](http://www.automation.siemens.com/bilddb/cax_de.aspx?mlfb=3RA2911-2AA00&lang=en)



last modified:

12/11/2017