

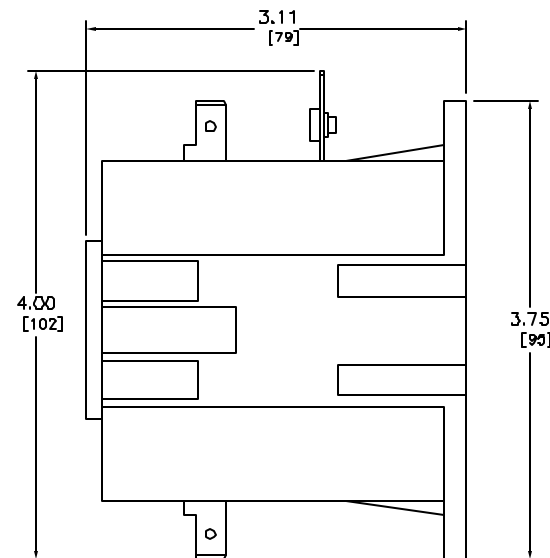
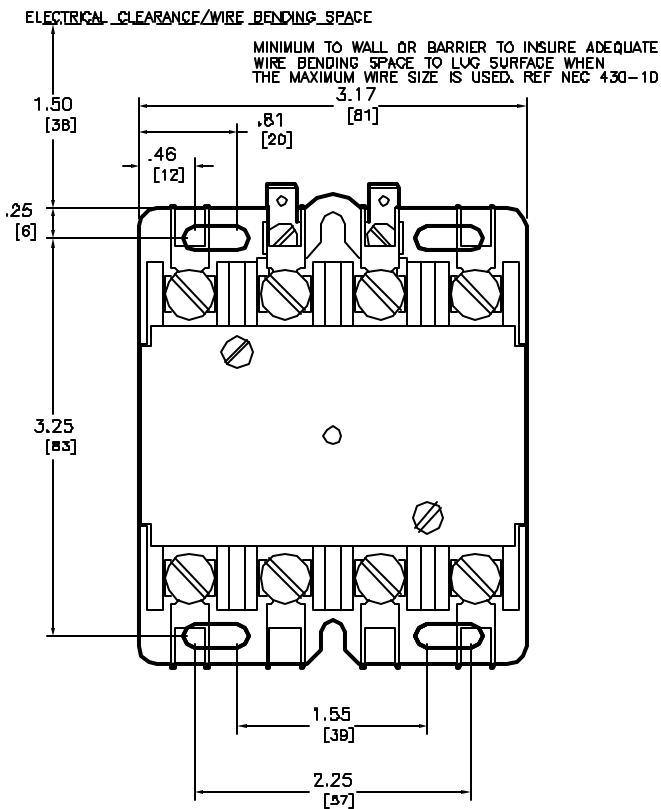
4-POLE DEFINITE PURPOSE - 500 VAC, 50-60 HZ

FULL LOAD AMPERES CODE (2)	
TYPE	FLA
14	20 FLA
24	25 FLA
34	30 FLA
44	40 FLA

COIL VOLTAGE CODE (1)	VOLTAGE	
	60 HZ	50 HZ
V14	24	24
V02	120	110
V09	208-240	220
V04	277	-
V06	480	440
V07	500	550

QUICK CONNECT TERMINALS AND
BINDER HEAD SCREWS FOR EASY WIRING.

* = BOX LUGS #14-#8 AWG WIRE SIZE



Catalog Number: 8910-DPA(2)(1)
 Ratings: SEE CHART
 UL File/CCN: E42240/CCN NLDX
 CSA File/Class: LR25400/321104
 Meets Standards: -
 Weight: 1.50 LB
 Wire Size: PDWER -#14-#8
 Terminal torque: 18lb - in (20 to 30 FLA) 25lb - in (40 FLA)
 Mounting Hwd.: (4) #10 or M5 screws

DUAL DIMENSIONS: INCHES
MILLIMETERS

DEFINITE PURPOSE CONTACTOR (4 POLE)
CLASS 8910 TYPE DPA (2) (1)

SQUARE D
Schneider Electric

DWG# E0310301-01
NO.