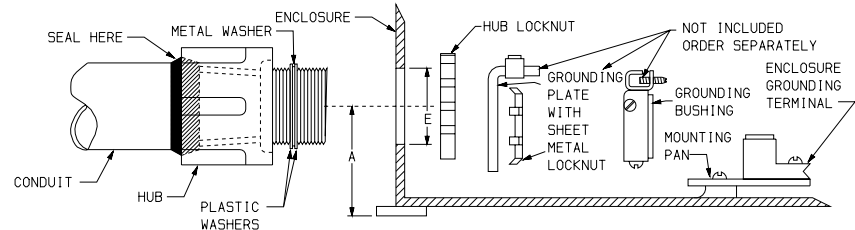


TERMINAL LUGS ‡			
AMPERES	MAX. WIRE	MIN. WIRE	TYPE
100	#1 AWG	#14 AWG	AL OR CU



CAUTION:  
NONMETALLIC ENCLOSURE DOES NOT PROVIDE GROUNDING BETWEEN CONDUIT CONNECTIONS OR BETWEEN CONDUIT AND INTERNAL METALLIC SWITCH PARTS.  
USE UL LISTED GROUNDING TYPE BUSHING OR GROUNDING PLATE AND CONNECT WITH JUMPER WIRE TO ENCLOSURE GROUNDING TERMINAL.

DUAL DIMENSIONS, INCHES  
MILLIMETERS

CATALOG NUMBER	VOLTAGE RATINGS	AMP. RATING	WIRING DIAG.	HORSEPOWER RATINGS												HUBS PROVIDED FOR FIELD INSTALLATION			ENCLOSURE HOLE SIZE DIMENSION E		MINIMUM HUB CENTERLINE DIMENSION A			
				120 VAC		240		480VAC		600VAC		125 VDC	250 VDC	600VDC		HUB NO.	NUMBER INCLUDED	HUB SIZE		IN	MM	IN	MM	
				MAX.	STD.	MAX.	STD.	MAX.	STD.	MAX.	STD.	MAX.	STD.	MAX.	IN			MM						
H363DX	600VAC;600VDC	100	A	-	15	-	30	25	-	60	30	75	-	-	40	50	NHUB6	2	2.00	51	2.50	64	2.63	67
HU363DX	600VAC;600VDC	100	B	7.5	-	20	30	-	40	75	-	75	7.5	20	-	50	NHUB6	2	2.00	51	2.50	64	2.63	67

NOTES:  
 UL LISTED - FILE E2875  
 SUITABLE FOR USE AS SERVICE EQUIPMENT.  
 \* FOR DC RATING, USE LEFT AND RIGHT SWITCHING POLES.  
 \* FOR SINGLE PHASE USE LEFT AND RIGHT SWITCHING POLES.  
 SHORT CIRCUIT CURRENT RATINGS:  
 10,000 AMPERES WITH CLASS H OR K FUSES. 200,000 AMPERES WITH CLASS J OR R FUSES.  
 10,000 AMPERES WHEN PROTECTED BY CLASS H OR K FUSES RATED 100 AMPERES MAXIMUM.  
 200,000 AMPERES WHEN PROTECTED BY CLASS J OR R FUSES RATED 100 AMPERES MAXIMUM.  
 ‡LUGS SUITABLE FOR 60°C AND 75°C ALUMINUM OR COPPER CONDUCTORS.

HEAVY DUTY SAFETY SWITCHES  
 VISIBLE BLADE TYPE  
 100 AMPERE  
 ENCLOSURE - NEMA TYPE 4X  
 FIBERGLASS REINFORCED POLYESTER



DWG. NO. 1907