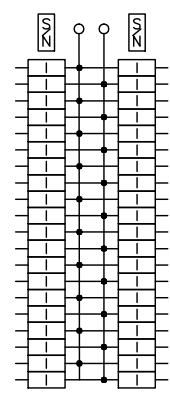
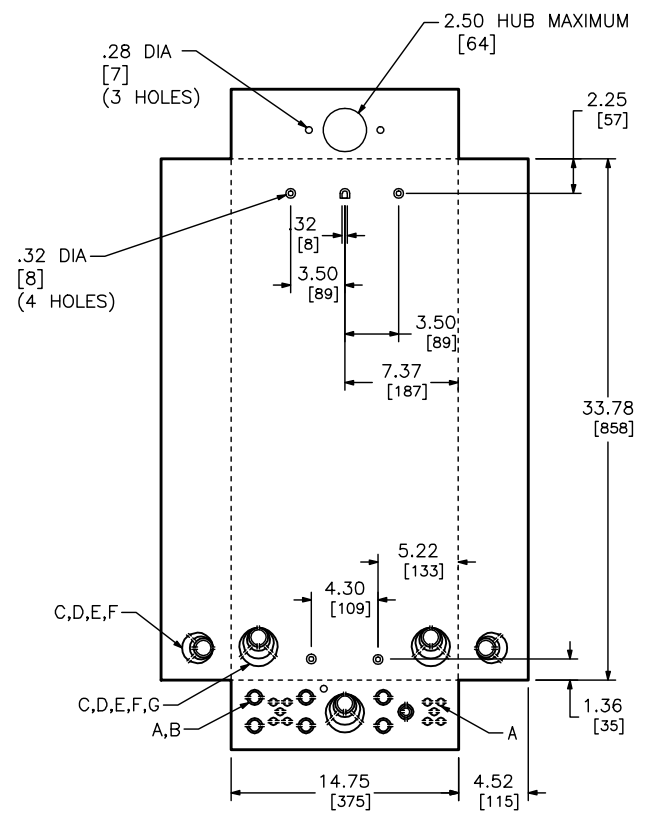
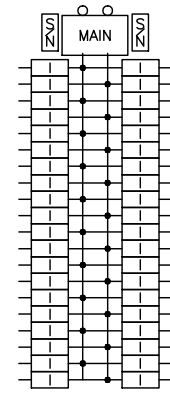


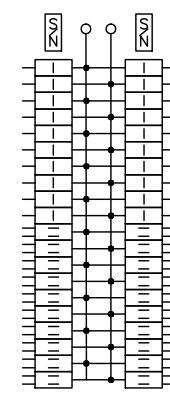
| KNOCKOUTS | | | | | | | |
|-----------|-----|-----|------|------|------|------|------|
| SYMBOL | A | B | C | D | E | F | G |
| IN | .50 | .75 | 1.00 | 1.25 | 1.50 | 2.00 | 2.50 |
| MM | 13 | 19 | 25 | 32 | 38 | 51 | 64 |



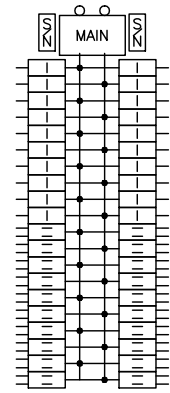
QO140L200GRB



QO140M200RB



QO14060L200GRB



QO1460M200RB

DUAL DIMENSIONS: INCHES
MILLIMETERS

| CATALOG NUMBER | MAXIMUM SYSTEM VOLTAGE | MAINS AMPERE RATING | SPACES | MAXIMUM NUMBER OF SINGLE POLE CIRCUITS | MAIN WIRE SIZE AWG AL/CU |
|---------------------------------|------------------------|---------------------|--------|--|--------------------------|
| QO140M200RB QO140L200GRB | 120/240VAC 1Ø 3W | 200 | 40 | 40 | #4-250 |
| QO14060L200GRB QO14060M200RB | | 200 | 40 | 60 | |

NOTES:
 FINISH - GRAY BAKED ENAMEL ELECTRODEPOSITED OVER CLEANED PHOSPATIZED STEEL.
 UL LISTED - FILE E-6294
 NEUTRALS - INSULATED GROUNDABLE.
 WHEN MOUNTING THESE LOAD CENTERS, ALLOW 1.25 / 32 CLEARANCE ON HINGED SIDE FOR THE DOOR TO OPEN

QO LOAD CENTER
 RAINPROOF NEMA TYPE 3R ENCLOSURE
 SIDE HINGED
 OUTDOOR



DWG# 3015
 NO.