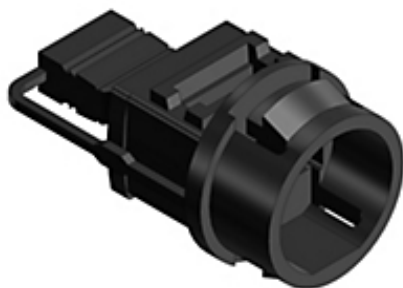




Actual



Representative

Catalog Number: 3300
Product ID: 7TAA011520R0005
UPC Number: 78621003300
Status: Active

Fitting, Non-Metallic Sheathed Cable, Knockout Size 1/2 Inch, Length 1-1/32 Inch, Height 1-5/16 Inch, Hole Size 5/16 Inch x 9/16 Inch, Thermoplastic, For use with 10-2, 12-2, and 14-2 Non-Metallic Cable, 18-2 and 18-3 SJ and SJO Cords and 18-2 SV, SVO, SJT and SJTO Cords, Single or Multiple, Cord Capacity .125-.300 Inch Diameter

Header

3D Model Available on Website

UNSPSC Specifications

UNSPSC	39121311 Electrical fittings
IGCC	4441 Electrical fittings
Brand Name	Steel City
Type	Connectors-Straight
Application	For use with non-metallic sheathed cable and flexible cord
Standard	UL E17583
Size	1/2 Inch
Material	Non-Metallic

ETIM Specifications

ETIM	EC001178 Screw connection for protective plastic hose
Model	Straight
Revolving thread	N
Construction type	No thread
Type of connection	Snap connection
One-piece	Y
Material screw gland	Other
Colour	Grey

Packaging

Inner Quantity	100
Inner Dimensions (inches)	6.3x5.1x4.2
Outer Quantity	500
Outer Dimensions (inches)	12.9x10.8x5.8
Weight Uom	1.5 lbs. per 100

Documents / Support Tools

Technical Data Sheet US	Available on Website
Technical Data Sheet CA	Available on Website
Instruction Sheet 1	ta02274-tb2

For further technical assistance, please contact us...

Thomas & Betts - USA
 8155 T&B Blvd.
 Memphis, TN 38125
 www.tnb.com

T&B Technical Support
 MS 3B-50
 8155 T&B Blvd.
 Memphis, TN 38125

Hours: 7AM - 6PM CDT
 Monday-Friday
 Phone: (888) 862-3289
 Fax: (901) 252-1321
 Email: techsupport@tnb.com