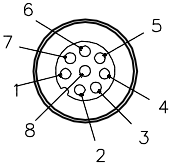
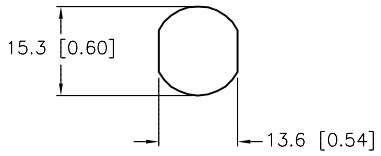
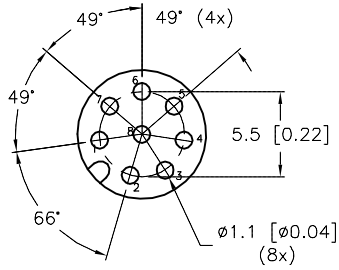
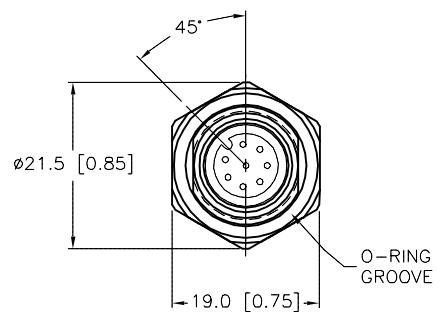
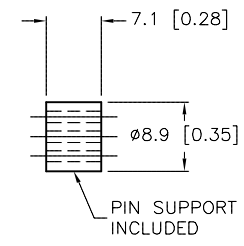
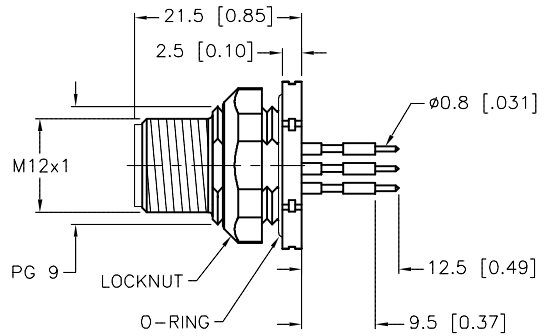


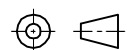
|  |   |   |   |                          |              |                          |            |                                  |              |                 |         |                   |       |                   |               |                            |                      |                    |                                  |                  |                                  |                      |            |  |
|--|---|---|---|--------------------------|--------------|--------------------------|------------|----------------------------------|--------------|-----------------|---------|-------------------|-------|-------------------|---------------|----------------------------|----------------------|--------------------|----------------------------------|------------------|----------------------------------|----------------------|------------|--|
| <b>MALE END VIEW</b>   | <b>TYPICAL PANEL CUTOUT</b>   | <b>TYPICAL BOARD LAYOUT</b>   | <b>SPECIFICATIONS</b>   |                          |              |                          |            |                                  |              |                 |         |                   |       |                   |               |                            |                      |                    |                                  |                  |                                  |                      |            |  |
|  |  |  <p>SCALE: 2=1</p> | <table border="1"> <tr><td>CONTACT CARRIER MATERIAL</td><td>NYLON OR TPU</td></tr> <tr><td>CONTACT MATERIAL/PLATING</td><td>BRASS/GOLD</td></tr> <tr><td>HOUSING/LOCKNUT MATERIAL/PLATING</td><td>BRASS/NICKEL</td></tr> <tr><td>O-RING MATERIAL</td><td>NITRILE</td></tr> <tr><td>RATED CURRENT [A]</td><td>1.5 A</td></tr> <tr><td>RATED VOLTAGE [V]</td><td>60 VAC/75 VDC</td></tr> <tr><td>NUMBER OF CONDUCTORS [AWG]</td><td>PRINTED CIRCUIT PINS</td></tr> <tr><td>TEMPERATURE RATING</td><td>-30°C TO +80°C (-22°F TO +176°F)</td></tr> <tr><td>PROTECTION CLASS</td><td>MEETS NEMA 1,3,4,6P AND IEC IP68</td></tr> <tr><td>MAX. PANEL THICKNESS</td><td>3.0 [0.12]</td></tr> </table> | CONTACT CARRIER MATERIAL | NYLON OR TPU | CONTACT MATERIAL/PLATING | BRASS/GOLD | HOUSING/LOCKNUT MATERIAL/PLATING | BRASS/NICKEL | O-RING MATERIAL | NITRILE | RATED CURRENT [A] | 1.5 A | RATED VOLTAGE [V] | 60 VAC/75 VDC | NUMBER OF CONDUCTORS [AWG] | PRINTED CIRCUIT PINS | TEMPERATURE RATING | -30°C TO +80°C (-22°F TO +176°F) | PROTECTION CLASS | MEETS NEMA 1,3,4,6P AND IEC IP68 | MAX. PANEL THICKNESS | 3.0 [0.12] |  |
| CONTACT CARRIER MATERIAL   | NYLON OR TPU  |   |   |                          |              |                          |            |                                  |              |                 |         |                   |       |                   |               |                            |                      |                    |                                  |                  |                                  |                      |            |  |
| CONTACT MATERIAL/PLATING   | BRASS/GOLD  |   |   |                          |              |                          |            |                                  |              |                 |         |                   |       |                   |               |                            |                      |                    |                                  |                  |                                  |                      |            |  |
| HOUSING/LOCKNUT MATERIAL/PLATING   | BRASS/NICKEL  |   |   |                          |              |                          |            |                                  |              |                 |         |                   |       |                   |               |                            |                      |                    |                                  |                  |                                  |                      |            |  |
| O-RING MATERIAL  | NITRILE   |   |   |                          |              |                          |            |                                  |              |                 |         |                   |       |                   |               |                            |                      |                    |                                  |                  |                                  |                      |            |  |
| RATED CURRENT [A]  | 1.5 A   |   |   |                          |              |                          |            |                                  |              |                 |         |                   |       |                   |               |                            |                      |                    |                                  |                  |                                  |                      |            |  |
| RATED VOLTAGE [V]  | 60 VAC/75 VDC   |   |   |                          |              |                          |            |                                  |              |                 |         |                   |       |                   |               |                            |                      |                    |                                  |                  |                                  |                      |            |  |
| NUMBER OF CONDUCTORS [AWG]   | PRINTED CIRCUIT PINS  |   |   |                          |              |                          |            |                                  |              |                 |         |                   |       |                   |               |                            |                      |                    |                                  |                  |                                  |                      |            |  |
| TEMPERATURE RATING   | -30°C TO +80°C (-22°F TO +176°F)  |   |   |                          |              |                          |            |                                  |              |                 |         |                   |       |                   |               |                            |                      |                    |                                  |                  |                                  |                      |            |  |
| PROTECTION CLASS   | MEETS NEMA 1,3,4,6P AND IEC IP68  |   |   |                          |              |                          |            |                                  |              |                 |         |                   |       |                   |               |                            |                      |                    |                                  |                  |                                  |                      |            |  |
| MAX. PANEL THICKNESS   | 3.0 [0.12]  |   |   |                          |              |                          |            |                                  |              |                 |         |                   |       |                   |               |                            |                      |                    |                                  |                  |                                  |                      |            |  |



END VIEW  
LOCKNUT NOT SHOWN



SOURCE DRAWING - FOR REFERENCE ONLY

|  |  |  |  |   |  |                     |                                 |  |
|--|--|--|--|---|--|---------------------|---------------------------------|--|
| <b>RELATED DOCUMENTS</b><br>1.<br>2.<br>3.<br>4. | <b>3RD ANGLE PROJECTION</b><br> | THIS DRAWING IS CONFIDENTIAL AND THE PROPERTY OF TURCK INC. USE OF THIS DOCUMENT WITHOUT WRITTEN PERMISSION IS PROHIBITED. | <div style="display: flex; justify-content: space-between;"> <div data-bbox="1470 1307 1848 1380"> <b>TURCK INC</b><br/> <i>High Technology Sensors and Automation Controls</i> </div> <div data-bbox="1848 1282 2068 1404">           3000 CAMPUS DRIVE<br/>           MINNEAPOLIS, MN 55441<br/>           1-800-544-7769<br/>           (763) 553-7300<br/>           (763) 553-0708 fax<br/>           turck.com         </div> </div> |   |  |                     |                                 |  |
| <b>MATERIAL</b><br><br>SEE SPECIFICATIONS        | ALL DIMENSIONS DISPLAYED ON THIS DRAWING ARE FOR REFERENCE ONLY  | DRFT    CBM    DATE 06/20/00<br>APVD            SCALE 1=1.0  | <b>DESCRIPTION</b><br><br>FSFD 8   |   |  |                     |                                 |  |
| <b>FINISH</b><br><br>SEE SPECIFICATIONS          | CONTACT TURCK FOR MORE INFORMATION   | UNIT OF MEASUREMENT<br><b>MILLIMETER [ INCH ]</b><br><br>DO NOT SCALE THIS DRAWING   |  | <table border="1"> <tr> <td data-bbox="1596 1477 1995 1526"> <b>IDENTIFICATION NO.</b><br/><br/>           U4501-4         </td> <td data-bbox="1995 1477 2068 1526"> <b>REV</b><br/><br/>           F         </td> </tr> <tr> <td colspan="2" data-bbox="1596 1559 2068 1591">           FILE: U4501-4      SHEET 1 OF 1         </td> </tr> </table> | <b>IDENTIFICATION NO.</b><br><br>U4501-4 | <b>REV</b><br><br>F | FILE: U4501-4      SHEET 1 OF 1 |  |
| <b>IDENTIFICATION NO.</b><br><br>U4501-4         | <b>REV</b><br><br>F  |  |  |   |  |                     |                                 |  |
| FILE: U4501-4      SHEET 1 OF 1                  |  |  |  |   |  |                     |                                 |  |

|     |                    |    |          |         |
|-----|--------------------|----|----------|---------|
| F   | UPDATE ORIENTATION | NF | 01/15/16 | 53091   |
| REV | DESCRIPTION        | BY | DATE     | ECO NO. |