

Fire-Rated Poke-Throughs

SystemOne Recessed

Cover



Features

- 180 degree cover opening to lay flat and reduce tripping hazards
- Two large cable egress doors
- Die cast aluminum cover construction for enhanced durability
- ADA Compliant
- Plated Finsih

Ordering Information

- Compatible with S1R8PTFIT1, S1R8PTFIT2, S1R8PTFIT3

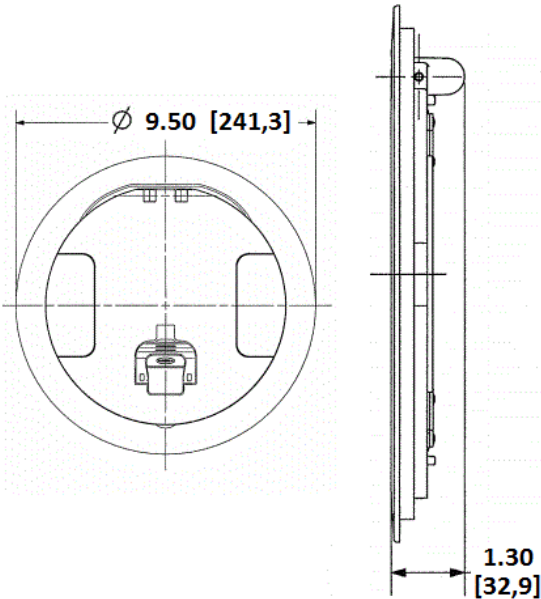
Catalog Number	UPC Number	Style
S1R8CVRBRS	783585444277	Surface
Finish	Flange Diameter	Finished Floor Insert
Brass Plated	9.5 Inches	No

Listings

cULus Listed
UL scrub water compliant
UL 514A Listed

Specifications

Cover Material	Die Cast Aluminum
Flange height	0.13 in.
Load Rating	1000 lbs. static load through 3" diameter mandrel (w/ 2x safety factor)



Online Resources

Customer Use Drawing
eCatalog
Installation Instructions

