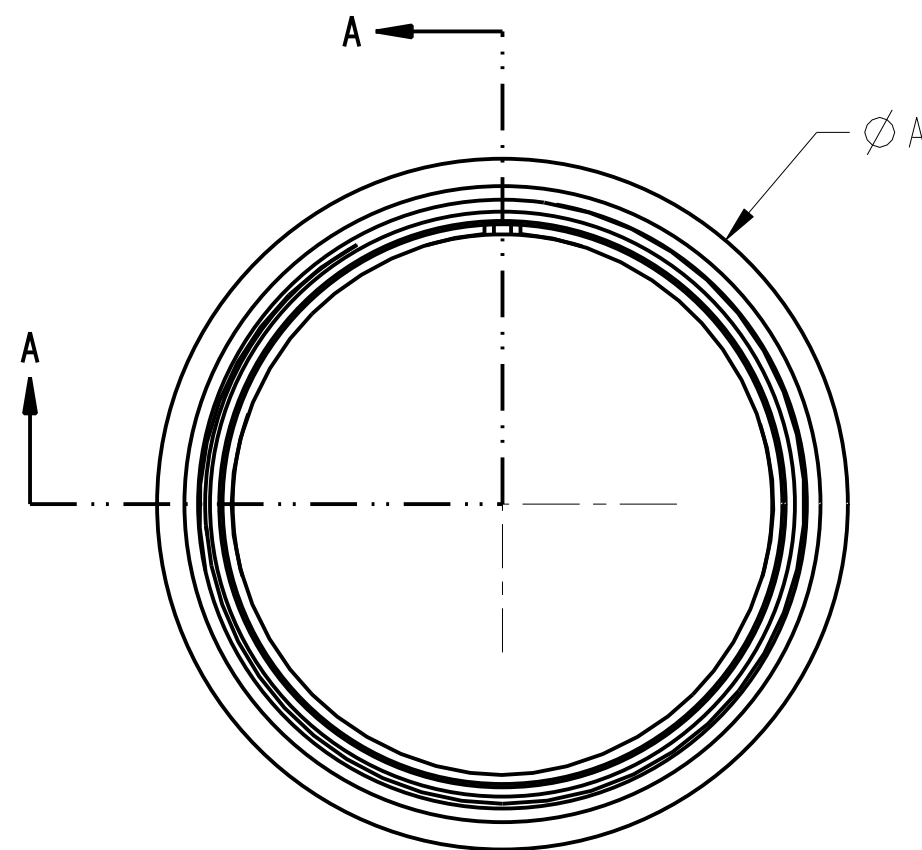
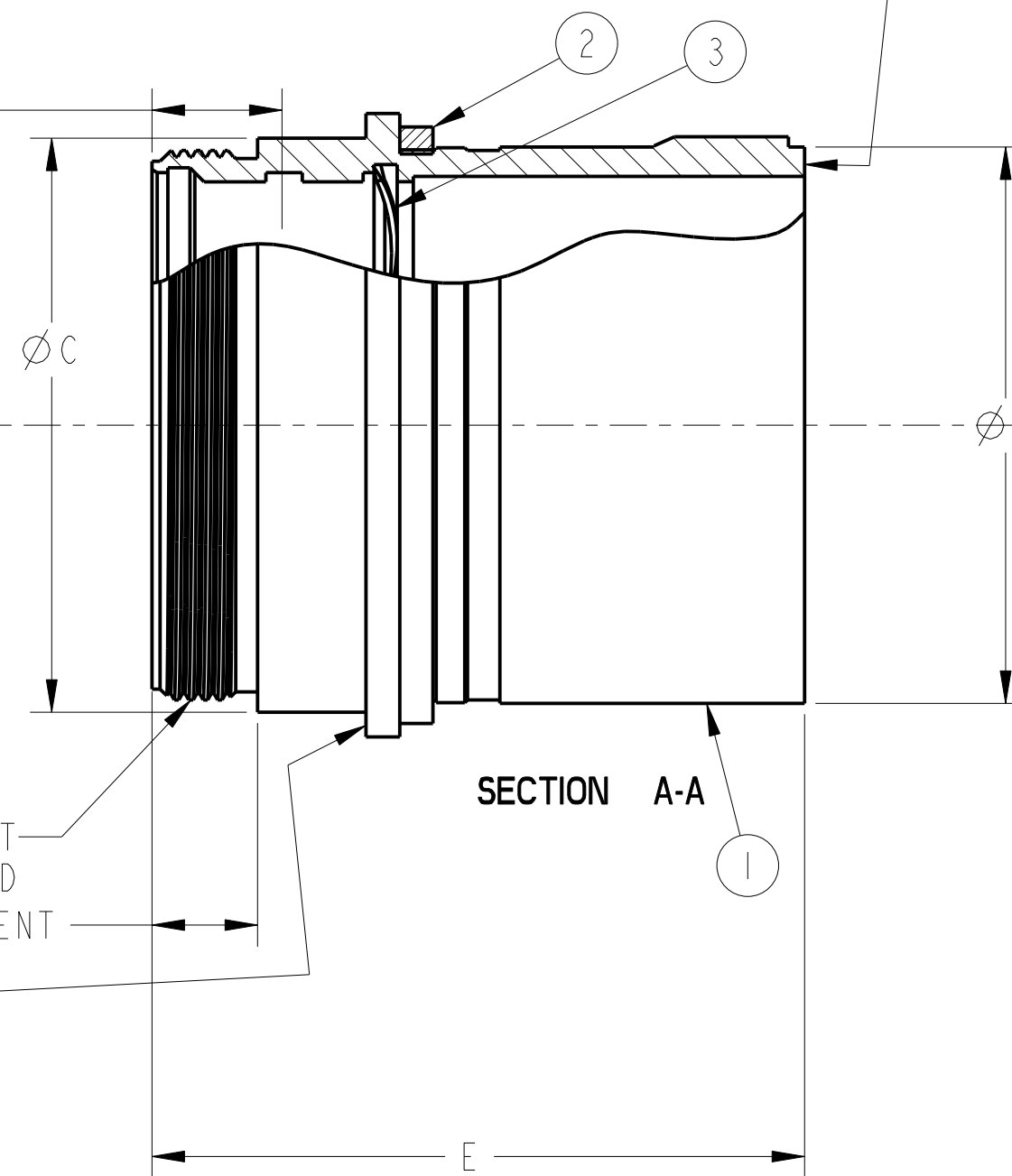


ASSEMBLY P/N	INSERT MOD NO.	1 MALE BARREL	2 BARREL SEAL	3 FRONT SPRING	4 INNER SEAL	5 RING	ØA	ØB	ØC	D MAJOR Ø	E
ZP-C-1316	1	ZP-1016-22A	ZP-6016-C	ZP-8916-10E			1.8985	1.6425/1.6385	1.7085	1.61394	2.510
ZP-C-1320	1	ZP-1020-22A	ZP-6020-C	ZP-8920-10E			2.3985	2.1425/2.1385	2.2085	2.11394	
ZP-C-1324	1	ZP-1024-22A	ZP-6024-C	ZP-8924-10E			2.8985	2.6425/2.6385	2.7085	2.61394	
ZP-C-1328	1	ZP-1028-22A	ZP-6028-C	ZP-8928-10E			3.3985	3.1125/3.1085	3.2085	3.11394	
ZP-C-1316-H400	1	ZP-1016M-22A	ZP-6016-C	ZP-8916-10E			1.8985	1.6425/1.6385	1.7085	1.61394	
ZP-C-1320-H400	1	ZP-1020M-22A	ZP-6020-C	ZP-8920-10E			2.3985	2.1425/2.1385	2.2085	2.11394	
ZP-C-1324-H400	1	ZP-1024M-22A	ZP-6024-C	ZP-8924-10E			2.8985	2.6425/2.6385	2.7085	2.61394	
ZP-C-1328-H400	1	ZP-1028M-22A	ZP-6028-C	ZP-8928-10E			3.3985	3.1125/3.1085	3.2085	3.11394	
ZP-C-1316-200-H400	2	ZP-1016M-22A	ZP-6016-C		ZP-6616-12CB	ZP-8916-21E	1.8985	1.6425/1.6385	1.7085	1.61394	
ZP-C-1320-200-H400	2	ZP-1020M-22A	ZP-6020-C		ZP-6620-12CB	ZP-8920-21E	2.3985	2.1425/2.1385	2.2085	2.11394	
ZP-C-1324-200-H400	2	ZP-1024M-22A	ZP-6024-C		ZP-6624-12CB	ZP-8924-21E	2.8985	2.6425/2.6385	2.7085	2.61394	
ZP-C-1328-200-H400	2	ZP-1028M-22A	ZP-6028-C		ZP-6628-12CB	ZP-8928-21E	3.3985	3.1125/3.1085	3.2085	3.11394	

REVISIONS		
LTR	DESCRIPTION	DATE
A	SEE ECN: A9758 FOR DETAILS SUPERCEDED DRAWING ZM-C-1320	1-JUL-10 K. HIBBARD
B	SEE ECN: B1079 FOR DETAILS	FEB-24-2011



FOR REFERENCE ONLY  
MASKING LOC. "B"  
.500±.063  
MASK ENTIRE INSIDE Ø  
AND END SURFACE  
IRIDITE



PART NUMBER	MASKING LOC "A"	MASKING LOC "B"	MASKING LOC "C"
ZP-C-13( )	NOT MASKED	MASKED	NOT MASKED
ZP-C-13( )-( )-H400	MASKED	MASKED	MASKED

SHELLS USED IN PART NUMBERS ZP-C-13( ) AND ZP-C-13( )-( )-H400 ARE THE SAME EXCEPT FOR MASKING LOCATIONS. USE TABLED DIMENSIONS FOR ALL PART NO'S.

- 3. PART NUMBERS SHOWN ARE FOR REFERENCE. SEE BOM FOR ACTUAL COMPONENT USAGE.
- 2. BALLOON CALLOUTS REFER TO TABLE AND PART NUMBERS ABOVE
- 1. IRIDITE ALL MASKED AREAS PER E4-19.20

NOTES:

THE USE OF THIS DOCUMENT IS UNLIMITED. HOWEVER, DOCUMENTS REFERENCED HEREON MAY CONTAIN LIMITED RIGHTS DATA.

PRO/ENGINEER INFORMATION	
N/A	Pro/e Model Used:
N/A	ZP-C-1320.ASSEM
	Drawing Name:
	ZP-C-1320-200

UNLESS OTHERWISE SPECIFIED	SPECIFICATIONS	POS	QTY	PART NUMBER	DESCRIPTION	NOTE
LINEAR DIMENSIONS ARE IN INCHES TOLERANCES: .XXXX = ±.0005 ANGLES= ±2° .XXX = ±.010 .XX = ±.03 .X = ±.1	MATERIAL SPEC. N/A				<b>AMPHENOL CORPORATION</b> <small>40-60 DELAWARE AVENUE SIDNEY, N.Y. 13838</small>	
DIM. & TOL. PER ASME Y14.5M; DRM PER MIL-DTL-31000; OTHER Amphenol Sds. PER 9-3800	PROCESS SPEC. N/A					<b>MALE BARREL ASSEMBLY "C" CURRENT RUPTURE</b>
LEGENDS: = FLAG NOTE CALL OUT REFERENCE ONLY					SIZE <b>C</b> CAGE CODE <b>77820</b> DOCUMENT NO. <b>ZP-C-13( )-( )</b> REV. <b>B</b> SCALE: 2.0 REF: ZM-C-1320 SHEET 1 OF 1	