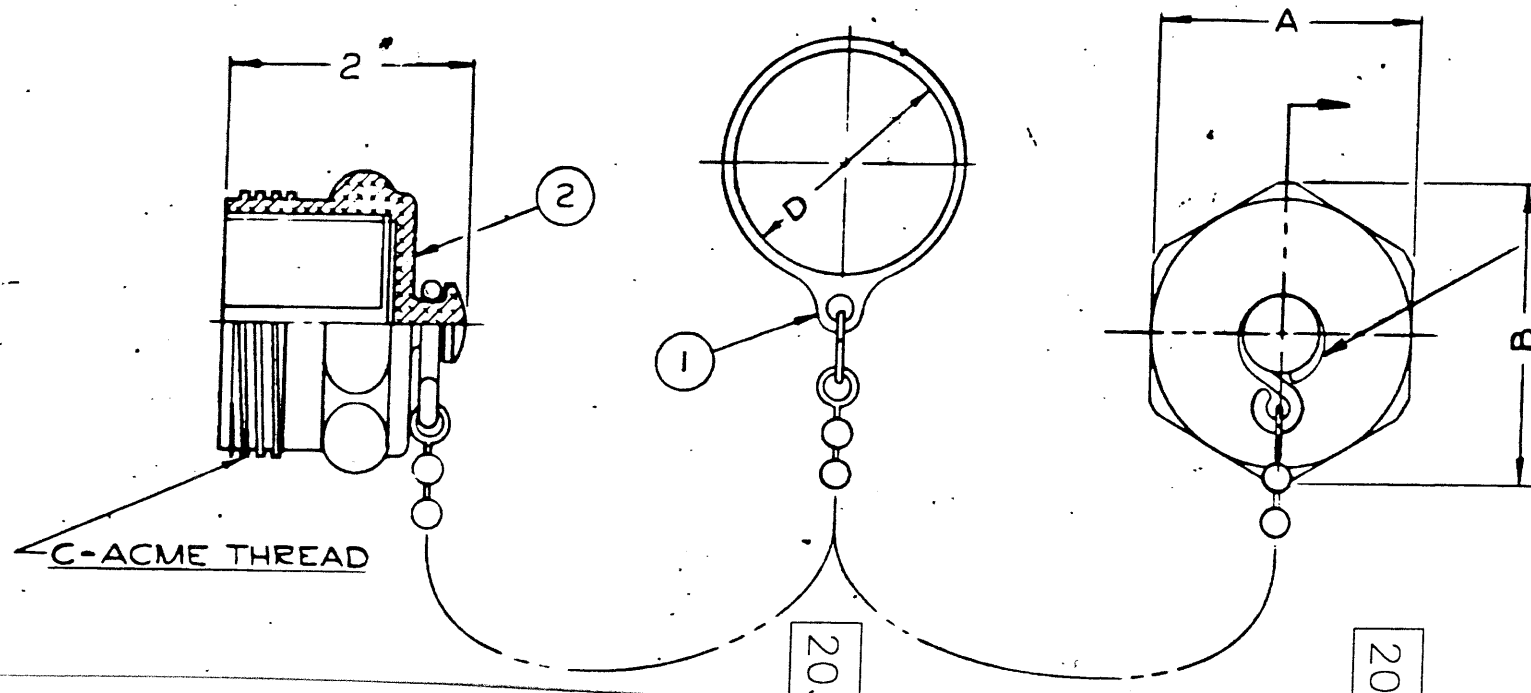
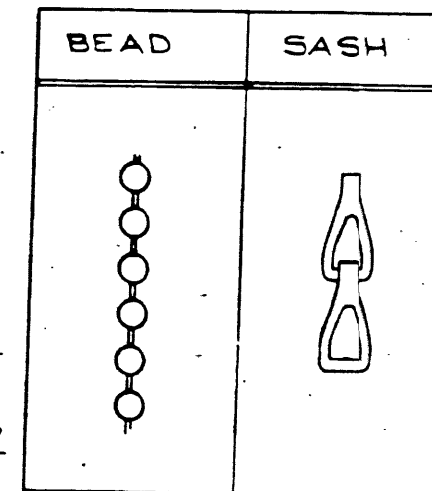


201653-()

ASSEMBLY SHOWN WITH
BEAD CHAIN.
ALSO AVAILABLE WITH
SASH CHAIN.

PART NO. (NOTED) SIZE
ZZM- C-5520 (B)

CHAIN STYLES



ASSEMBLE "S" HOOK TO COVER AND CLOSE LARGE END WITHOUT EXCESSIVE GAP. RING MUST ROTATE FREELY ON STUD WITHOUT BINDING.

AMPHENOL SIDNEY INTEGRATION
FSCM NO. 49367
SPECIFICATION NO. 9-9380
DATE: 30-JAN-2001

SINE PART NO.	ASSEMBLY PART NO.	203760-1	ITEM 1		202329-1	ITEM 2	A	B	C	D
			CHAIN & RING ASS'Y	CHAIN STYLE						
201653-1	ZP-C-5520	7	ZP-8520-10E	BEAD	1	ZP-5520-20A	2 1/2"	2 49/64"	2 1/2"	2 1/4"
201653	ZP-C-5520-A	3	ZP-8520-10EA	SASH	2	ZP-5524-20A	3"	3 9/32"	3"	2 3/4"
201653-2	ZP-C-5524	∞	ZP-8524-10E	BEAD	3	ZP-5528-20A	3 1/2"	3 15/16"	3 1/2"	3 1/4"
201653-3	ZP-C-5524-A	4	ZP-8524-10EA	SASH	X	ZP-5516-20A	2"	2 15/64"	2"	1 3/4"
201653-4	ZP-C-5528	∅	ZP-8528-10E	BEAD						
201653-5	ZP-C-5528-A	X	ZP-8528-10EA	SASH						
201653-6	ZP-C-5516	∅	ZP-8516-10E	BEAD						
201653-7	ZP-C-5516-A	∞	ZP-8516-10EA	SASH						

REV.	DATE	BY	E.C.O.	CHANGE	REV.	DATE	BY	E.C.O.	CHANGE

ITEM	DESCRIPTION	PART NO.	QTY
FINISH	THE PYLE-NATIONAL COMPANY CHICAGO, ILLINOIS		
MATERIAL	SEE B/M ABOVE	NAME OF PART MALE BARREL COVER ASSEMBLY	
SUPERSEDES	PRODUCT ENGR. DATE	PROCESS ENGR. DATE	PATTERN NO.
FIRST USED ON	DRAWN DATE BICKEL 11-18-50	CHECKED DATE J. Nova 12/18/51	SCALE NONE
		PART NO. (NOTED) SIZE ZZM- C-5520 (B)	

201653-()